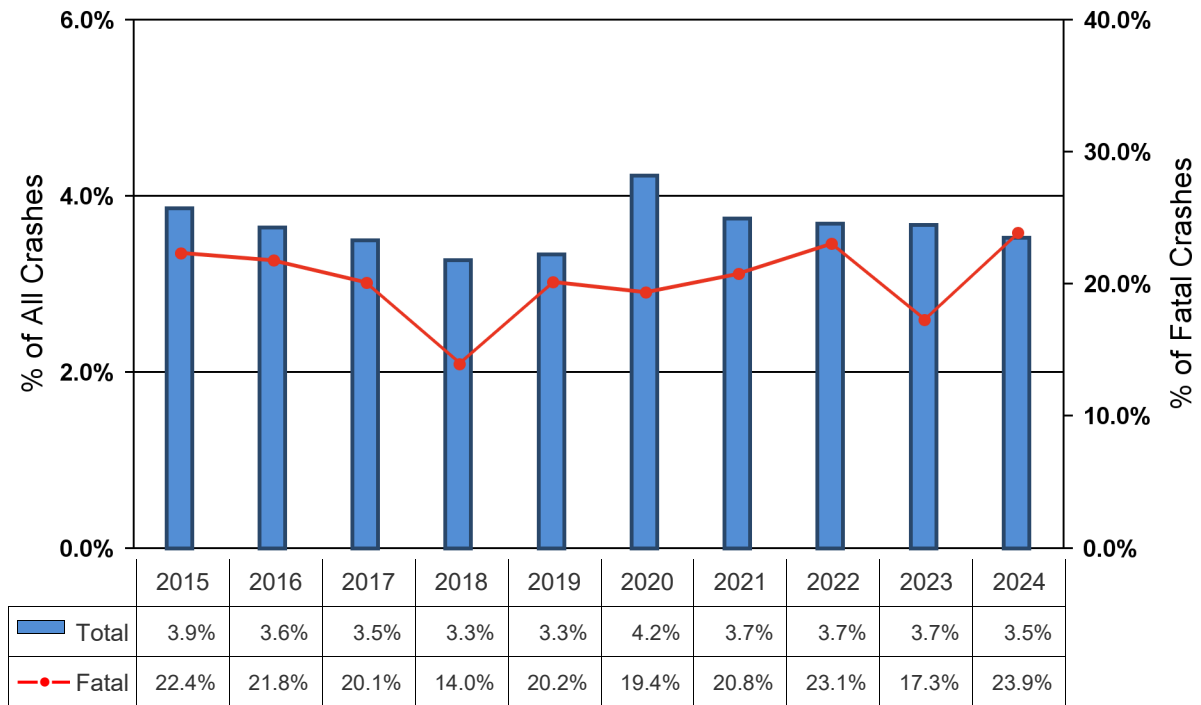


## 2024 Kansas Traffic Crash Facts

# Alcohol Related Crashes

Type	Total	Alcohol-Related	% of All
<b>Crashes</b>			
All	61,491	2,169	3.5%
Fatal	314	75	23.9%
Injury	14,154	825	5.8%
PDO	47,018	1,269	2.7%
<b>People</b>			
All	135,771	3,899	2.9%
Deaths	339	81	23.9%
Injuries	19,615	1,195	6.1%
Unharmmed	114,633	2,623	2.3%

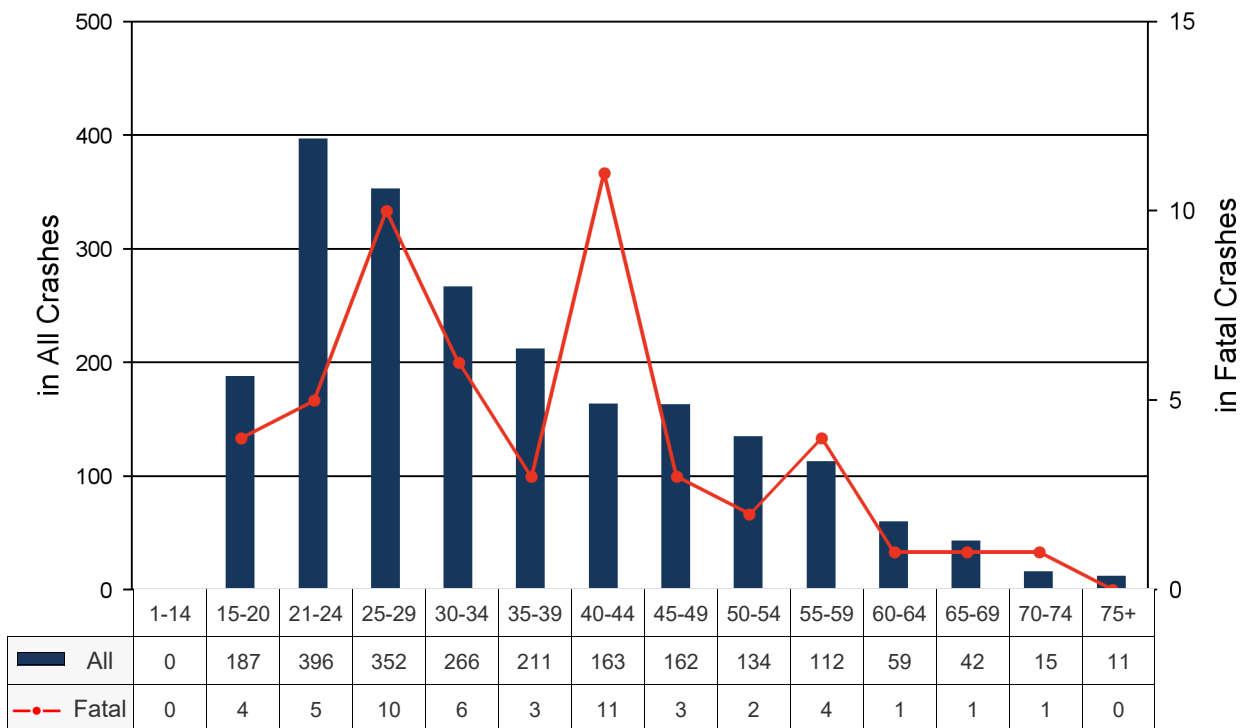
### Alcohol-Related Crash History



2024 Kansas Traffic Crash Facts  
**Alcohol-Related Crashes**  
 By Driver Age

Alcohol-Related	Crashes				People	
Driver Ages	Total	Fatal	Injury	PDO	Deaths	Injured
1-14	0	0	0	0	0	0
1-20	256	5	106	145	5	186
15-20	187	4	69	114	5	94
21-24	396	5	153	238	5	215
25-29	352	10	130	212	11	187
30-34	266	6	92	168	6	119
35-39	211	3	85	123	4	123
40-44	163	11	59	93	12	77
45-49	162	3	74	85	3	99
50-54	134	2	47	85	2	64
55-59	112	4	33	75	4	36
60-64	59	1	23	35	3	30
65-69	42	1	13	28	1	14
70-74	15	1	6	8	2	7
75+	11	0	5	6	0	5
Unknown	20	0	4	16	0	5

Alcohol-Related Drivers by Age Group



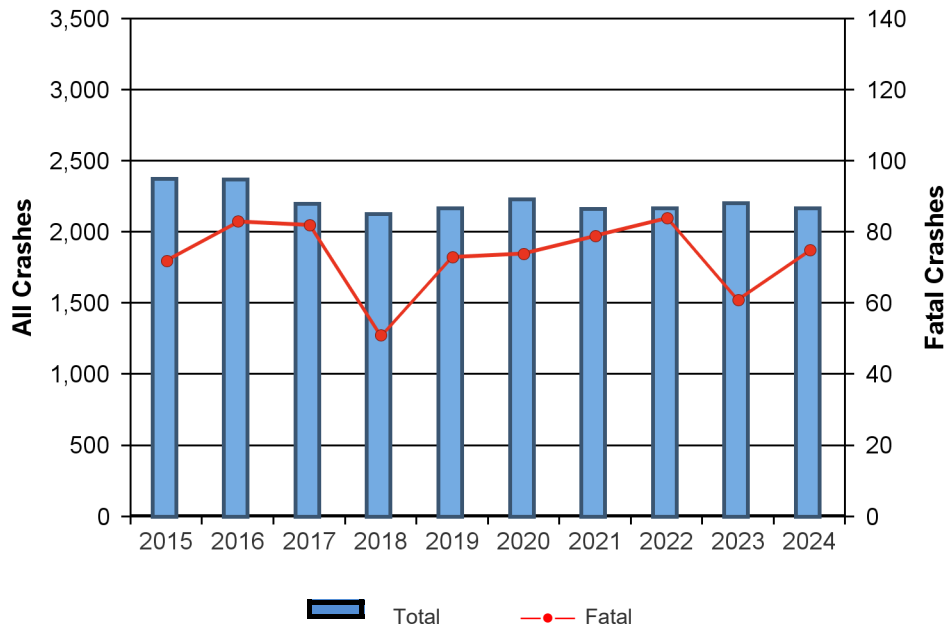
Note: More than one driver per age group can be involved in the same crash.

2024 Kansas Traffic Crash Facts

# ALCOHOL-RELATED CRASHES

Year	Crashes				People	
	Total	Fatal	Injury	PDO	Deaths	Injuries
2015	2,372	72	948	1,352	77	1,335
2016	2,369	83	905	1,381	92	1,223
2017	2,199	82	813	1,304	91	1,130
2018	2,125	51	790	1,284	58	1,071
2019	2,166	73	815	1,278	81	1,160
2020	2,231	74	834	1,323	86	1,180
2021	2,161	79	857	1,225	88	1,192
2022	2,167	84	815	1,268	96	1,163
2023	2,203	61	883	1,259	67	1,196
2024	2,169	75	825	1,269	81	1,195
<b>Total</b>	<b>22,162</b>	<b>734</b>	<b>8,485</b>	<b>12,943</b>	<b>817</b>	<b>11,845</b>

Alcohol-Related Crash Summary



2024 Kansas Traffic Crash Facts

## ALCOHOL-RELATED CRASHES

### Involving Alcohol-Related Male Drivers

Year	Crashes				People	
	Total	Fatal	Injury	PDO	Deaths	Injuries
2015	1,917	64	777	1,076	48	703
2016	1,879	71	748	1,060	56	679
2017	1,732	76	659	997	62	608
2018	1,648	37	632	979	28	552
2019	1,701	66	656	979	54	597
2020	1,756	65	670	1,021	60	606
2021	1,682	73	689	920	55	653
2022	1,724	75	676	973	63	649
2023	1,715	53	688	974	43	627
2024	1,701	66	673	962	55	596
<b>Total</b>	<b>17,455</b>	<b>646</b>	<b>6,868</b>	<b>9,941</b>	<b>524</b>	<b>6,270</b>

### Involving Alcohol-Related Female Drivers

Year	Crashes				People	
	Total	Fatal	Injury	PDO	Deaths	Injuries
2015	753	14	304	435	9	251
2016	789	23	293	473	17	259
2017	705	17	264	424	9	226
2018	718	19	273	426	17	241
2019	736	15	298	423	13	240
2020	752	21	295	436	7	260
2021	757	20	308	429	11	266
2022	697	19	269	409	13	244
2023	770	18	327	425	12	296
2024	732	21	304	407	12	262
<b>Total</b>	<b>7,409</b>	<b>187</b>	<b>2,935</b>	<b>4,287</b>	<b>120</b>	<b>2,545</b>

Note: There are instances where a female and a male driver were involved in the same crash causing multiple counting in the data above. In addition, drivers whose gender was unknown are excluded.