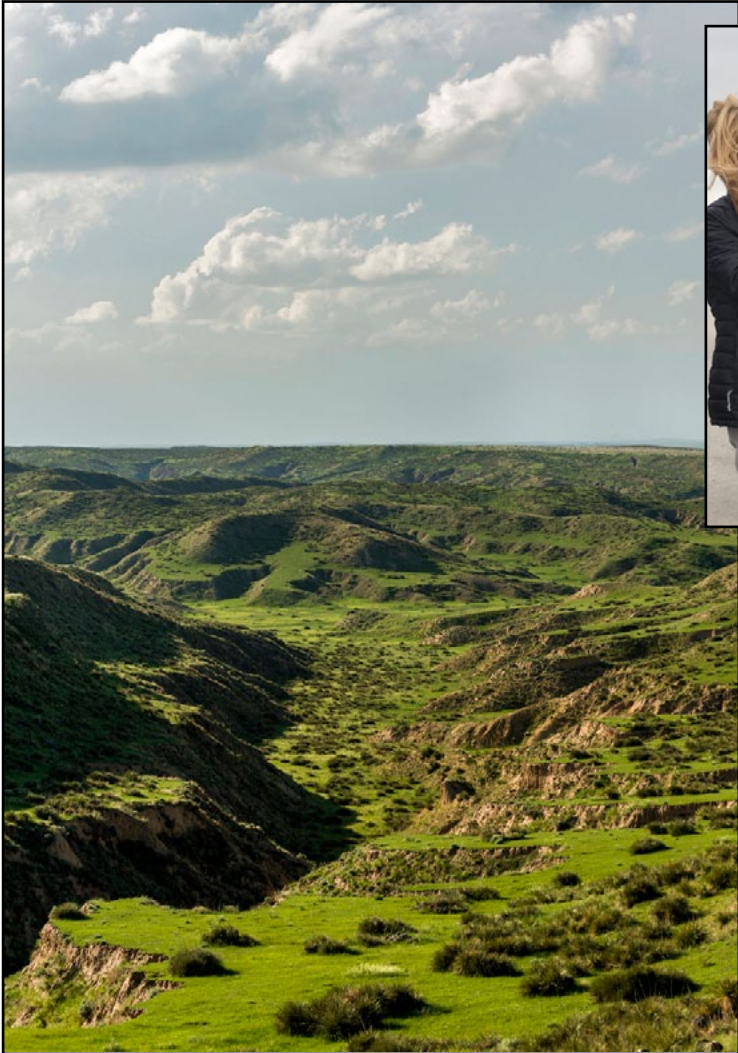


Translines EXPRESS

Oct. 19, 2016

Land and Sky Scenic Byway



Kansas' 12th byway: The Land and Sky Scenic Byway was officially opened on Oct. 6 at a ceremony in Goodland. The byway, which covers parts of Wallace, Sherman and Cheyenne counties, is the 12th Kansas byway to receive official designation from KDOT.

The 88-mile route on K-27 begins in Wallace County in Sharon Springs. It runs north through Goodland in Sherman County, and ends in Cheyenne County north of St. Francis at the Nebraska border. Travelers along the byway have the opportunity to experience the Wallace Branch of the Great Western Cattle Trail, scale the highest point in Kansas at Mount Sunflower and explore the deep canyons and rugged landscape of the Arikaree Breaks. The byway is also the only one in the state that focuses on agriculture and features thousands of acres of rotating crops, livestock and wildlife along the route

A video on the ribbon cutting can be found [here](#).

Above: a view from the Land and Sky Scenic Byway. Top right: Interim Secretary Richard Carlson, third from right, and other officials gather at ceremony celebrating the new byway in Goodland on Oct. 6.

SLT - you are invited

SLT celebration: KDOT is celebrating the completion of the K-10 SLT east leg at 10 a.m. on Friday, Nov. 4, on the new eastbound K-10 just east of E. 1750 Road (rain location is at the KDOT Lawrence office, 3775 E. 25th Street in Lawrence). The public is invited to attend.

At noon, there will be a public walk/bike celebration on a half-mile of the new K-10 through the scenic wetlands. Enter K-10 from Haskell Avenue and head west to the parking area. In case of rain, this part of the event will not be rescheduled.

Trivia!

Halloween

1. Originally, you had to do this for a treat.
2. Jack o'lanterns were once made out of these foods instead of pumpkins.
3. These two cities in the U.S. are the self-proclaimed Halloween capitals of the world.
4. What's the world's record for carving a pumpkin?
5. According to tradition, if a person wears his or her clothes inside out and then walks backwards on Halloween, what will happen?
6. In 2015, it was estimated that 68 million Americans dressed up for Halloween. About how many pet owners dressed up their pet last year?

Scenic



Neil Croxton took this photo recently of an orange sulphur butterfly along U.S. 40 in Wallace County.

Aviation

Interim Secretary Richard Carlson, fifth from right, participates in the ribbon-cutting ceremony with other officials at the dedication of the Lyons Rice County Airport runway expansion project on Sept. 28. The event celebrated the extension of the runway from 3,000 feet to 4,400 feet and widened the runway from 50 feet to 75 feet. The aim of the project was for economic development and to make the runway available for critical air ambulance services.



KDOT Blog

Kansas Transportation

Wednesday, Oct. 12

#IAMKDOT: Joyce Poitevint

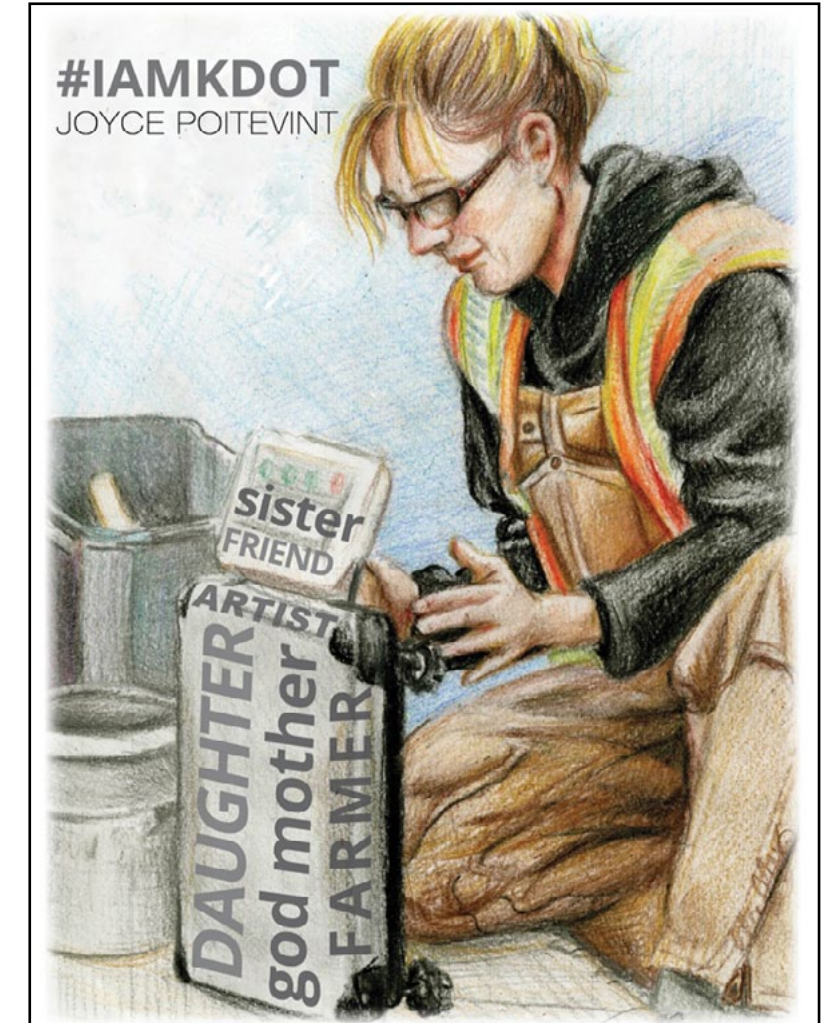
This month's #IAMKDOT feature is Joyce Poitevint.

She began her career with KDOT in 1992 and worked at the KDOT sign shop for 20 years. Beginning in 2012, Poitevint became an Engineering Technician in the field for a year and half. This illustration of Poitevint was from her time as a Field Technician while working on the South Lawrence Traffic way in 2012.

In 2014, Poitevint moved to KDOT Headquarters as a Traffic Control Technician. In August of this year, Poitevint was promoted to Lighting Technician.

Poitevint said that when she is not at work she enjoys farming and creating artwork. She is a god-mother, daughter, sister and friend.

To see more stories on other transportation topics, check out the regular posts on the Kansas Transportation blog at <http://kansastransportation.blogspot.com/>



TRIVIA ANSWERS

1. Dance. Trick-or-treating has been traced back to the European practice of mumming or guysing, where costume-wearing participants would go door-to-door performing choreographed dances and songs in exchange for treats.
2. Turnips, beets and potatoes.
3. Salem, Massachusetts, and Anoka, Minnesota.
4. 16.47 seconds by Stephen Clarke. The rules of the competition state that the pumpkin must weigh less than 24 pounds and be carved in a traditional way, which requires at least eyes, nose, ears, and a mouth.
5. He or she will see a witch at midnight.
6. About 20 million.

In Memory

Condolences to friends and family of KDOT retiree Paul Tartar who died Oct. 7 in Weir. Tartar worked at KDOT for 21 years and was an Equipment Operator Senior at the Columbus Subarea office before he retired.

Retirement

District One

Thomas Ford, Equipment Operator Senior, Osage City

District Five

KC Jorns, Equipment Mechanic Senior, Pratt

KTA

Crews lay asphalt on the approach to the new Osage County bridge at mile marker 157. This first half of the two-year reconstruction project is scheduled to be completed by the end of October weather permitting. The southbound half will follow a similar schedule next year.



Safety



Sharing safety alerts: This is a safety alert by a KDOT employee that is being shared in Translines to help prevent similar accidents from happening.

KDOT Safety TEAM (Together Employees Accomplish More)

Things to check on a pre-trip walk-around: Recently an International dump truck was taken into the District shop to have a hydraulic leak fixed. While the truck was at the shop, the Equipment Mechanic noticed an air leak. A search was conducted and the air leak was found. A brake pot was leaking from inside the housing. Upon further inspection, it was found that the bottom securing nut was missing from the brake pot altogether. With the nut missing, it put excess strain on the top securing bolt and eventually broke the top bolt out of the housing (top left). This brake pot was to the right-front drive axle. It was decided at that time it was a good idea to inspect the three other brake pots and

found the left-front drive axle brake pot was missing the clevis pin (top right). This pin holds the clevis in place on the slack adjuster. Both of these issues would have been noticed during a proper pre-trip inspection. The securing nuts should be checked for tightness to make sure they aren't "walking" themselves out. If even one nut is found to be loose, tighten it back down and take it to the Equipment Mechanic and ask them to replace the nuts with locking nuts. The clevis pins should be checked to make sure they are secure. If the cotter pin is missing, replace it. Finding minor issues could prevent major problems. Take the necessary time to perform pre-trip duties correctly - preventing accidents and injuries could save a life.

Put the Brakes on Fatalities

Reducing fatalities: "It took just one person. One person who made a choice. One person who chose to drink. One person who chose to drink a lot. One person who then chose to get behind the wheel of his car. One person killed two precious young lives," said Barby Jobe of Wichita. Jobe was telling about the night her daughter, Kylie, and her boyfriend, Kyle, were killed on I-70 five years ago. Two years ago, Miss Kansas 2016 Kendall Schoenkase was a passenger in a crash caused by distracted driving. "I relive those moments frequently as a registered nurse," Schoenkase said. "I am reminded over and over again how, in the blink of an eye, my life was almost taken from me." Jobe and Schoenkase were joined by Interim Secretary Richard Carlson and KHP Col. Mark Bruce at the Put the Brakes on Fatalities Day news conference at the Capitol on Oct. 10. Secretary Carlson talked about his granddaughters who were in a vehicle crash a few years ago. "My wife Cheryl rushed to the scene and watched the emergency workers use the Jaws of Life to cut through the roof, not knowing if the girls were alive," he said. "I'm glad to report that both granddaughters are doing great now."



Interim Secretary Richard Carlson's granddaughter Jordan, left, and wife, Cheryl, join him during the news conference to stress why traffic safety is important.

Unfortunately that isn't always the case. Last year, 355 people were killed in traffic crashes across Kansas. "That is why we're here – to help put the brakes on fatalities," Carlson said. To see a short video from the news conference, click [here](#).



Above: Members of Students Against Destructive Decisions from high schools across the state attended the event and participate in a seat belt challenge while law enforcement officers time the races. Right: Barby Jobe talks about the loss of her daughter in a DUI crash as speakers Col. Mark Bruce, Interim Secretary Carlson and Schoenkase as well as more than 100 attendees listen.



Miss Kansas 2016 Kendall Schoenkase poses with KDOT retiree Larry Emig who initiated the safety campaign 15 years ago.



Put the Brakes on Fatalities Day

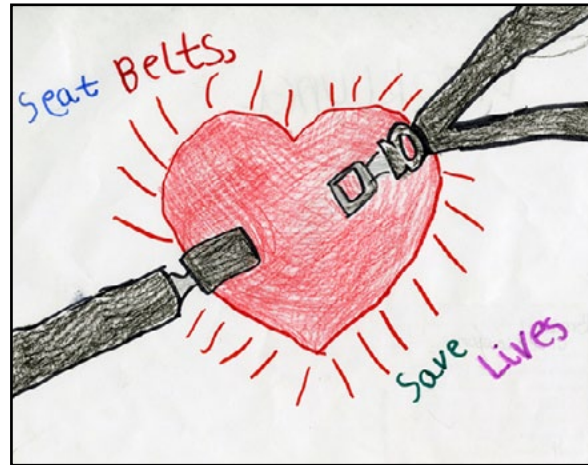
Students focus on safety: Winners of two Put the Brakes on Fatalities Day statewide contests have been selected.

Poster contest

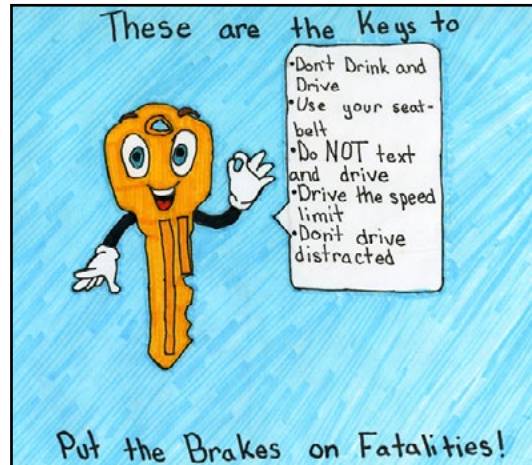
- Brooklyn Green-Lawson of Riverton, Kayleigh Flores of Moscow and Sierra de Koning of Axtell are the statewide winners. Each student was first selected as a regional winner and will receive a bicycle and a helmet donated by Safe Kids Kansas at presentations at their schools. A total of 824 Kansas kids ages 5 to 13 participated.

Green-Lawson, Flores and de Koning were then chosen as the statewide winner in their age category and received additional prize packages.

Video contest - Students from [Wichita East High School](#) won first place. The class will receive their choice of an iPad, GoPro or Osmo Steadicam along with a \$500 donation to the school. Students in Cardinal Productions at [Eudora High School](#) captured second place and [Spring Hill Middle School](#) placed third. Each will receive one of the remaining prizes listed above. More than 160 entries from teens in 30 Kansas schools participated. (School names are linked to their videos.)



Brooklyn Green Lawson's artwork



Sierra de Koning's artwork



Kayleigh Flores' artwork

Partnering Conference



State Transportation Engineer Catherine Patrick, left, and Local Projects Bureau Chief Mike Stringer, below, were two of several speakers at the annual KDOT/American Council of Engineering Companies of Kansas Partnering Conference that took place in Topeka on Oct. 10.



New Federal Highway Administration Division Director Rick Backlund, left, talks with KDOT's new Director of Operations Larry Thompson.



Traffic Safety



Amanda Horner, left, and Tenille Kimberlin from the Kansas Traffic Safety Resource Office attempt to ride bicycles around cones without hitting them while wearing distracted driving goggles. The activity took place as part of the Drugged Driving Summit in Topeka earlier in October and illustrates the danger of driving while impaired.

Just for fun



Transportation Planning Bureau Chief Mike Moriarty took this photo earlier this month when his family was eating at the Alpine Inn in Omaha and a group of raccoons gathered at the door to gaze hungrily into the fried chicken restaurant. The group was impatiently waiting for their next helping of leftover chicken, which is a regular attraction for the critters. The kiddie pool is used by the raccoons for drinking and wading.

KDOT Employee Council Holiday Ornament Order Form

2016

Headquarters: Contact your Council Rep.

Districts/Retirees: Mail form to -
Ruby Hilton, ESOB - 13th Floor,
700 SW Harrison, Topeka, KS 66603

Year	Quantity	Cost	Total
2016		\$5.00	
2015		\$3.00	
2014		\$3.00	
2013		\$3.00	
2012		\$3.00	
2010		\$3.00	
Total Paid:			



Great Gift Ideas!

Please Print -

Name: _____

Address: _____
 _____ (Retirees only - home address)

Work phone: _____

Make checks payable to
KDOT Employee
Council

For more details, call
Ruby at (785) 291-3980

----- Past Ornaments Still Available -----

2010



2012



Supply is limited
on ornaments
from previous
years - first
come, first serve

2013



2014



2015

