

Translines EXPRESS

June 1, 2016

District Six



A tornado outbreak in southwest Kansas damaged buildings, knocked down power lines and signs and forced the closure of U.S. 50 between Cimarron and Dodge City for a couple of hours on May 24. KDOT crews were called out around 7 p.m. to close the highway and assist with clean-up after a tornado roared through the area just west of Dodge City. Authorities reported two injuries as a result of the tornado. Photos courtesy of the Dodge City Daily Globe.



Headquarters

Patrick named STE:

A long-time KDOT engineer has been named the next State Transportation Engineer effective in September.



Catherine Patrick

Catherine

Patrick, who began her KDOT career in 1989 and has served as the agency's Director of Operations since 2007, now begins the transition to replace State Transportation Engineer Jerry Younger, who also serves as Deputy Secretary, when he retires in September.

"Catherine Patrick brings a wealth of experience acquired over a quarter-century at KDOT. Her broad knowledge of Kansas transportation, along with her dedication to the agency, will serve Kansas well," said Secretary Mike King.

Patrick, who earned a civil engineering degree from Kansas State University, has served in a variety of jobs at KDOT, including District Engineer, Topeka and Kansas City Metro Engineer, and Assistant Bureau Chief in Construction and Maintenance.

In Memory

Condolences to friends and family of KDOT retiree **Al Milner** who passed away on May 18 in Topeka. Milner worked at the Materials and Research Center and retired from KDOT in 2002 with 43 years of service.

Trivia!

June 8, 1966, tornado in Topeka

1. About how many miles on the ground did the tornado travel?
2. About how long was it on the ground?
3. How many homes were completely destroyed? How many were damaged?
4. What other Kansas town was hit by a major tornado that same day?
5. What was the famous warning that Bill Curtis gave to WIBW viewers?

KTSRO



Norraine Wingfield (center), Director of the Kansas Traffic Safety Resource Office, was honored on May 20 at Fort Riley with the "Order of the Distinguished Member of the Garrison" for her efforts with traffic safety programs on the base. KTSRO is an education contractor for KDOT's Traffic Safety unit.

TRIVIA ANSWERS

1. About 22 miles.
2. About 34 minutes.
3. About 800 were destroyed, about 3,000 were damaged.
4. Manhattan.
5. "For God's sake, take cover!"

Social Media

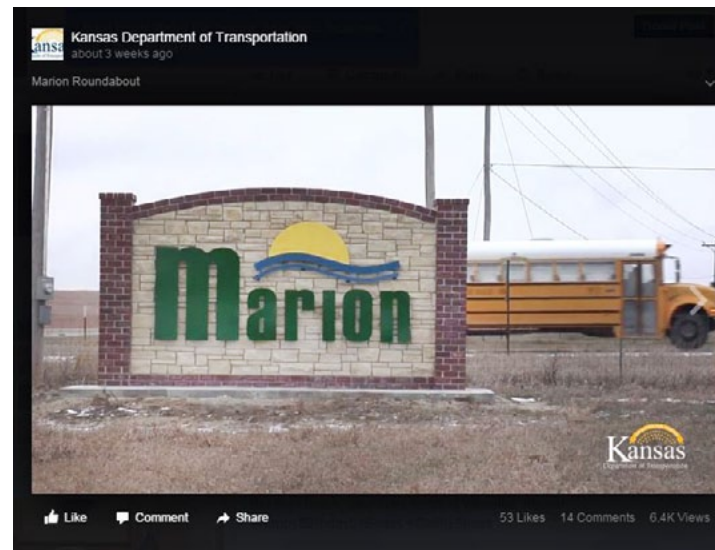
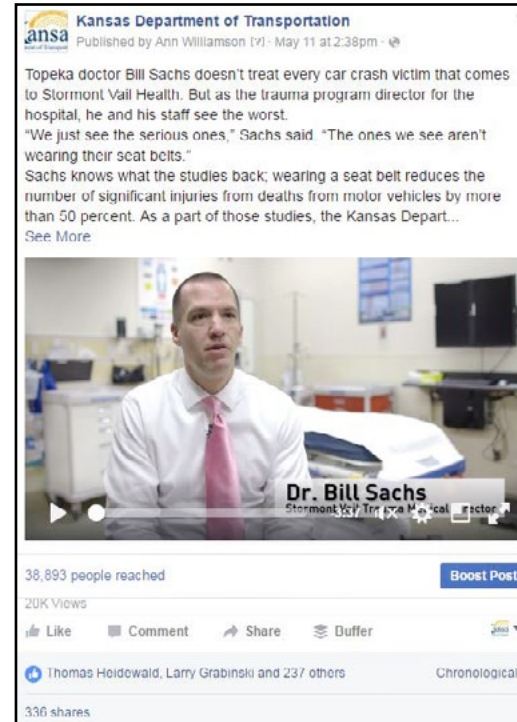
Spreading the message:

A video recently shared by KDOT traffic safety has been viewed more than 20,000 times on the KDOT headquarters facebook page. The video features Topeka physician Bill Sachs and teenager Lauren

Newell who survived a roll-over crash last year by wearing her seat belt.

The video has 239 likes and has been shared 336 times in the three weeks it has been on the page. In comparison, the most watched video previously on a KDOT facebook page was about the Marion roundabout, which had 6,400 views, 59 shares and 54 likes.

The videos can be viewed on youtube at these links - [Marion](#) and [Click it. Or ticket.](#)



Have an idea for a news brief or picture that could be featured in an upcoming edition of Translines Express?

Please e-mail your suggestions to Kimberly@ksdot.org

District Two



Don Duryea, KDOT Equipment Mechanic Specialist in District Two, took this photo of the storm just north of Solomon on May 25.

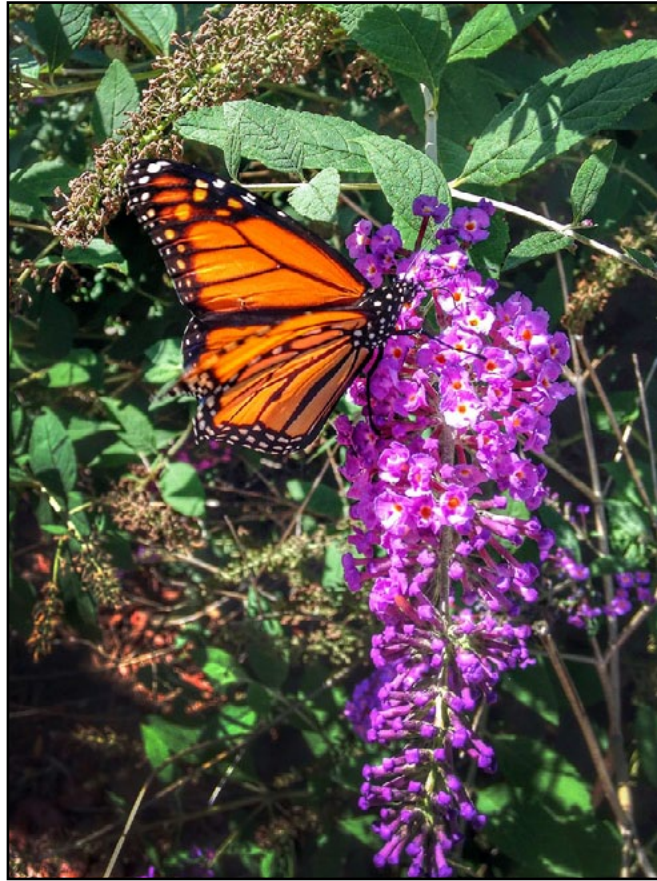
District Three

Recent heavy rainfall has caused the outer slopes of the roadway to slide off of U.S. 281 south of Osborne, prompting KDOT crews to make emergency repairs. Crews dug down 10 feet to remove and replace wet soil and also removed approximately 8 feet of the shoulder and highway. Traffic was reduced to one-lane for



three days while the repairs were made. The Osborne Subarea, Smith Center Subarea, Stockton Subarea, Phillipsburg Area and District bridge crew assisted with the repairs.

General



Efforts are being made to plant more vegetation along I-35 to provide more habitat area for Monarch butterflies.

Monarch highway: KDOT, along with five other state departments of transportation and the Federal Highway Administration, signed an agreement on May 26 that will improve pollinator habitat along Interstate 35, a key migratory corridor for Monarch butterflies. Last year, I-35, which passes through Minnesota, Iowa, Missouri, Kansas, Oklahoma and Texas, was identified as a corridor that could be enhanced as butterfly habitat through the increased planting of vegetation that provides refuge and a food source. "Kansas roadsides have been a haven for Monarchs since 2008 when KDOT started planting butterfly milkweed and other native wildflowers on the roadsides," said Scott Shields, KDOT Environmental Scientist. "We are excited to partner with other states on I-35 to provide education and habitat for these important pollinator insects."

This agreement establishes a cooperative and coordinated effort to establish best practices and promote public awareness of the Monarch butterfly and other pollinating insects.

Monarch butterflies hatch in late summer or early fall, wintering in Mexico. In the spring, butterflies begin their 2,000-mile trek north. Along the way, they lay eggs that develop into butterflies that finish the trip and begin the cycle again.

KTA

Summer travel has arrived which means KTA's State Farm Safety Assist summer program will begin soon. If you experience a flat tire, overheating vehicle or other roadway incident, call *KTA (*582) to receive assistance. To learn more about the program, visit the KTA web page at http://www.ksturnpike.com/travel_information/state_farm_safety_assist

KTA



Work continues on the Arkansas River Bridge in Wichita as crews pour drill shafts.

Do you know of a KDOT retiree not receiving Translines?

Please let them know that if they are interested in receiving it, send an email to Kimberly@ksdot.org



General

Introducing Secretary King: Ingram's, Kansas City's business magazine, thinks Secretary Mike King is someone you need to know. So the magazine's editors have included him in its 2016 list of 50 Kansans You Should Know, published in its May edition. "I believe all of us, at some point in our lives, have a strong desire to give to public service," said Secretary King. Now in its fifth year, the Kansans You Should Know list includes a broad range of people from business, academia, politics, government and more.

KDOT Blog

Kansas Transportation

Wednesday, May 25

The zipper merge comes to Kansas

The zipper merge is popular in Minnesota and has been used in Washington state as well. It's a common question that KDOT gets on social media: when will Kansas use the zipper merge instead of backing up traffic for miles?

But what's the zipper merge? The zipper merge asks drivers to utilize both lanes until told to merge, then take turns of every other car merging until you are in one lane, flowing together like the teeth of a zipper.

KDOT will be using the zipper merge, or late merge, on a bridge repair project in the Kansas City area, northbound U.S. 69 over 119th Street in Overland Park. It is important that drivers follow the signs instead of using the traditional early merge that has been used in Kansas for years. Don't lane block your fellow drivers; the two lanes are both to be used while traveling.

KDOT created a video to explain how the zipper merge will work in Kansas. For more information about the zipper merge and the project that it will be used on, please look [here](#). And please zip the urge to merge.

To see more stories on other transportation topics, check out the regular posts on the Kansas Transportation blog at <http://kansastransportation.blogspot.com/>



Run for the Wall

About 250 Run for the Wall participants stopped at the Topeka service area on May 23 for gas provided by the KTA and ABATE of Kansas. KTA and KDOT staff also passed out snacks and bottled water. Run for the Wall began in 1989 to bring awareness of those still unaccounted for from all wars as well as promote healing among veterans and families.



District One



After more storms in northeast Kansas, K-116 over the Delaware River in Atchison County (right) and K-99 at 200 Road at south Emporia curve in Lyon County (above) were closed on May 27 because of flooding.



Truck Parking Study

Truck parking recommendations: Development of a truck parking information management system is among the recommendations of a study completed this spring.

With a goal of improving the Kansas' freight network's safety, efficiency and competitiveness, KDOT and the KTA teamed up to study the related issues and develop solutions.

"Because truckers are restricted to the number of hours they can drive, they must be able to easily find parking without burning fuel and time looking for a place to safely get off the road," said Secretary Mike King.

"And, in winter weather, it's not unusual to see lines of trucks backed up along freeway entrance and exit ramps, sometimes stretching to the actual roadway. "This study will help us find solutions that give drivers an efficient means of finding available parking when they must get off the road."

The study, which concluded this spring, includes four recommendations:

- Improve parking information and sharing
- Add or improve parking assets
- Explore creating parking improvement partnerships
- And examine pro-parking policies for freight trucks.

A \$25 million federal grant awarded this year to Kansas and seven other Midwestern states will give Kansas a jump start on implementing the recommendation for improved parking information and sharing through the Truck Parking Information and Management System. Through the use of electronic message signs, traveler information websites and smartphone apps, truckers in the eight-state region will be able to know in real time where safe, adequate parking is available and best meets their needs. To view the full report, click [here](#).