

Translines EXPRESS

July 29, 2015

District Five

Pratt Area
Maintenance staff remove K-64 signs along the 3.5-mile stretch of highway in mid July. K-64 has been removed from the State Highway System as part of the local agreement in conjunction with a U.S. 54 System Enhancement project in Pratt County.



Work Zone Crashes

KDOT attenuators hit: Two days in a row, a KDOT attenuator was hit in a work zone while maintenance crews were completing pavement repairs on westbound I-470 in Topeka. No one was injured in either of the crashes.

The first crash occurred about 9:45 a.m. on July 21 on I-470 near the U.S. 75 interchange. The second crash happened about 1 p.m. on July 22 west of the I-470/S.W. 21st Street interchange. Both times the dump truck was stationed on the highway to help direct traffic to move over to the next lane via a lighted arrow board located above the attenuator.



Above is the damaged attenuator from the first day's crash in the I-470 work zone in Topeka, at left is the result of the second crash. No injuries occurred in either crash.

Gateway



Gateway celebration: Two milestones of the Johnson County Gateway project were celebrated Tuesday at an event in Olathe. While the entire project won't be completed until late 2016, the College Boulevard widening to four lanes and the diverging diamond interchange at K-10 and Ridgeview Road are now open to traffic.

College Boulevard will serve as a detour option while construction continues on K-10. The new diverging diamond interchange is the third such structure in Kansas.

KDOT also announced that by early next week, the new eastbound K-10 to northbound I-435 two-lane flyover bridge ramp is scheduled to open to all traffic. More than 230,000 vehicles use the I-435/I-35/K-10 interchange daily and that number is estimated to grow to 380,000 by 2040.

Gateway Interchange Constructors is the design-build team that is completing the \$288 million project's Phase 2 construction.



Top photo: Secretary Mike King speaks at the Gateway event yesterday in Olathe. Middle photo: The opening of the diverging diamond interchange at K-10 and Ridgeview Road was one of the milestones celebrated. Right photo: KDOT Gateway Project Manager Burt Morey highlights details of the project.

Aviation

Director of Aviation named: Tiffany Brown has been named KDOT's Director of Aviation by Secretary Mike King.



Tiffany Brown

Brown joined KDOT in February 2013 as the State Aviation Engineer and since April of this year has served as the Acting Director. Previously she was the agency's Deputy Director of Aviation and managed the Kansas Airport Improvement Program. She is the first woman to lead the division in its 40-year history. "As the daughter to a professional skydiver my earliest memories were at an airport. I have deep appreciation for the aviation industry," Brown said. "I'm ecstatic to permanently take the lead of the division and continue to strive to enhance the lives of Kansans through aviation." Before joining KDOT, she was a design engineer working on airport master plans and engineering design for Benesch, a Manhattan consulting firm. She will continue to oversee airport inspections, the Kansas Airport Development Program and the Kansas Airport Improvement Program.

Trivia!

- Who is Kansas agriculture? (based on 2012 stats)*
1. What is the average age of the Kansas farmer?
 2. What is the average size of a Kansas farm?
 3. How many farms were in Kansas in 2012?
 4. Of those farms, how many are family owned?
 5. How much agricultural output did they generate?

District One



Above, a new highway sign commemorating U.S. 69 as 2nd Lt. Justin L Sisson Memorial Highway was unveiled by family members at a July 16 ceremony in Olathe. Sisson, a 23-year-old U.S. Army soldier, was killed in action by a suicide car bomber on June 3, 2013, while leading his platoon and providing security in Chamkani, Afghanistan. Below, KDOT staff from the Olathe office installed the signs on U.S. 69 later that day, one just north of 132nd Road, and the other just south of 167th Street.



District Three



Work should finish in the next few weeks on the I-70 project in Sherman County.

I-70 update: Work is progressing on a multi-faceted project along I-70 in Sherman County between Goodland and Edson.

Work began in May with replacing pavement on approaches to several bridges along the project. This was followed up by concrete panel replacements, concrete patching and milling and overlay of the road

surface in both the east and westbound lanes. New pavement markings, rumble strips and a rock edge wedge will also be installed upon the completion of construction, which should wrap up by mid-August. Venture Corporation is the primary contractor for the project with a total contract cost of \$5.5 million.



District Two

The Junction City Subarea crew replaced a culvert last week on K-57 about four miles north of Dwight. Work began July 20 with one-lane traffic controlled by a flagman during the day. Construction of the new culvert was completed July 23.



Transload Facility

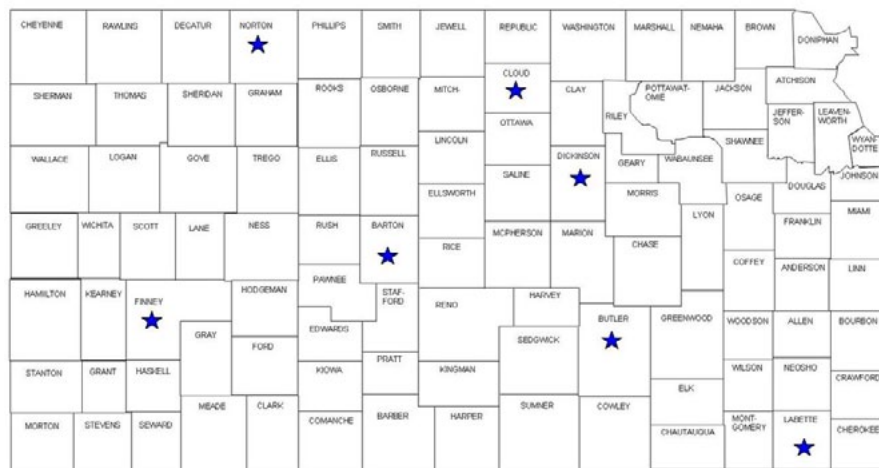
Shipping hub finalists announced: Seven finalists have been selected for the site of a proposed Kansas transload shipping center.

The KDOT/KTA Transload Facility Site Analysis team selected the finalists from the 111 proposals submitted for consideration. Some communities submitted multiple sites.

The finalists include Abilene, Concordia, El Dorado (Refinery Road site), Garden City (U.S. 50 Industrial Park), Great Bend, Great Plains Industrial Park just south of Parsons and Norton.

Transloading is the process of moving goods from one mode of transportation to another, or in this case, from truck to rail and rail to truck. By blending the benefits of shipping by rail and local/short haul trucking, a transload facility can provide more flexible and cost-effective solutions for customers who may not have local access to freight rail service or those who need expanded warehousing.

"I'm pleased that so many communities in every region



of the state submitted proposals. A transload facility has the potential to not only lower shipping costs, it is a job creator and provides economic development opportunities for the export of Kansas products," said Secretary Mike King.

The selection committee will hear presentations from the finalists later this month and a final selection is expected in late August.

KTA



Multiple bridges along the Kansas Turnpike have had recent polymer overlays, and others will receive them throughout the rest of the season to help extend the bridges' life. A couple bridges receiving this overlay include the 29th Street bridge (above) and the Tecumseh bridge (right), both in Topeka.



Kansas Transportation

Tuesday, July 28

Hot summer days can only mean one thing at KDOT: road construction season is in full swing



The KDOT construction season generally runs from March to November, when the weather is most favorable for road work. With a full slate of projects planned for 2015, crews are busy repairing, reconstructing and restoring roadways this season across the Sunflower State.

Most KDOT projects focus on preservation of the current road surface and range from light resurfacing to full reconstruction.

The most common construction activities include:

Chip seals: As the name implies, chip seals involve spreading asphalt on the current road surface, followed by a layer of chipped rock that is compacted into place by heavy rollers.

Crack seals: Excessive moisture and debris can damage pavement, so KDOT utilizes crack seals to provide a temporary fix to the roadway until it can be completely repaired. The premise is simple: workers fill cracks with an asphalt-like sealer to help smooth out the surface.

Mill and overlay: These comprise the majority of KDOT's construction activities. First, a section of the roadway is ground, or milled, off and removed. It is then replaced with an asphalt overlay using some of the material that was milled off. Asphalt is the most commonly recycled product in the United States and what isn't recycled during construction is often used on other projects.

Surface recycle: Here's another example of asphalt recycling. A truck-mounted heater softens and removes the top layer of pavement, which is then mixed with a rejuvenating agent and reapplied. Finally, the recycled pavement is topped with a thin asphalt overlay or chip seal to complete the project.

Next time you're passing through a construction zone, remember this list and see if you can identify what kind of project is being done. And, as always, slow down and "Give 'em a Brake!"

To see more stories on other transportation topics, check out the regular posts on the Kansas Transportation blog at <http://kansastransportation.blogspot.com/>

Transportation Planning

New Bicycle/ Pedestrian Coordinator:

Mike Spadafore remembers his favorite bicycle. It was Christmas Day 1980 and the weather was warmer than usual in Chicago that time of year.



Mike Spadafore

"I received a red and black BMX bike from my parents and I was unable to contain my excitement. I wanted to take it outside immediately," Spadafore said. "There wasn't any snow on the ground and I was able to ride it out the door and around our block on Christmas—while still wearing my pajamas. It was a great feeling."

Spadafore, who started with KDOT last October, was recently named the Statewide Bicycle & Pedestrian Coordinator. As part the Comprehensive Transportation Planning Unit, he will maintain his role as one of the state's MPO liaisons who work closely with the six metropolitan planning organizations throughout Kansas.

Have an idea for a news brief or picture that could be featured in an upcoming edition of *Translines Express*? Please e-mail to translines@ksdot.org

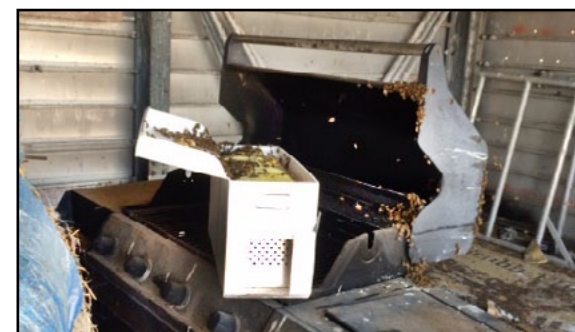
TRIVIA ANSWERS

1. 58.2 years old
2. 747 acres
3. 61,773
4. 86.5 percent
5. \$18.5 billion

District Five



At left, beekeeper Brad Lien catches bees that built a nest in the grill kept at the Wichita Hillside Area office (below left). The grill was needed for a barbecue lunch recently hosted by supervisors in the Wichita Metro for construction and maintenance employees. Below, Wichita-West Supervisor Bill Springer cooked the burgers and brats for the event.



District Three



With an increase in wind farms, District Three has been busy routing oversize and super loads. This load was westbound on U.S. 36 east of Atwood on July 13, when the trailer jackknifed, nearly tipping the semi over. The 112,000-pound load came off of the trailer and both ended up in the south ditch. There were no injuries, and the Atwood Subarea crew repaired the pavement damage.

5th ANNUAL
 Kansas Book Festival

KANSAS STATE CAPITOL BUILDING | TOPEKA
 September 12, 2015
 9 am - 4 pm

FREE ADMISSION | BOOK SIGNINGS | VENDORS | FOOD
 AUTHOR PRESENTATIONS | CHILDREN'S ACTIVITIES

kansasbookfestival.com

Technology

Federal technology grant: According to the Wichita Eagle, KDOT has been approved for a \$1 million federal grant to update its construction management software.

The U.S. Department of Transportation announced that Kansas would be among seven states to receive a combined \$7.1 million in aid for technology upgrades.

Sandy Tommer, Bureau Chief of Construction and Materials, said it would enable the agency to buy new software to manage its highway construction projects. She said it will help officials in Topeka track the progress of construction projects throughout the state. "It will all be Web-based. We'll be able to use tablets out in the field to gather data," Tommer said. "It'll be terrific."

Retirees

The following employees will retire from KDOT in August.

Headquarters

Deborah Barker, Engineering Technician Specialist, Construction & Materials

Catherine Gorman, Administrative Specialist, Transportation Safety & Technology

Michael Hickman, Applications Developer III, Information Technology

District One

Stephen Manker, Equipment Operator Senior, Topeka/Gage

District Two

Terry Grant, Equipment Operator Senior, Concordia

Cynthia Riechers, Engineering Technician Senior, Salina

In Memory

Condolences to friends and family of KDOT retiree lone Gineste of Gas who died July 25 in Iola. Gineste. She served as the KDOT Iola Office Manager for many years, retiring in 1995.

Condolences to friends and family of KDOT retiree Franklin "Bud" Newman who died on July 20 in Lenexa. Newman retired from KDOT in 1988 after 34 years as an Engineering Technician.

CAPITOL MID-WEEK

FARMERS' MARKET



TOPEKA

Every Wednesday

7:30 a.m. to noon until Oct. 14

10th Street - south side of the
Statehouse grounds