

Translines EXPRESS

July 27, 2016

Greetings from Secretary Carlson

As my official duties as Transportation Secretary begin, I would like to take this opportunity to introduce myself. I have been working with Secretary King for the past two weeks getting to know KDOT and learning about this great organization. It hasn't taken me long to learn that KDOT is a community of friends and neighbors who are working to make Kansas a better place to live.

Every business I have been involved with over the years has had its ups and downs. Constant fluctuations in the economy create the need to change. KDOT has been affected by the same fluctuations over the years, including during the recessions of 2004 and 2008. Once again we are working through economic constraints placed on us. I know we will work through them because of your dedication and willingness to serve the people of Kansas. You have worked to assure that taxpayer dollars are spent responsibly and used in the most efficient way possible to keep our roads well-maintained. KDOT is far larger than any us, but



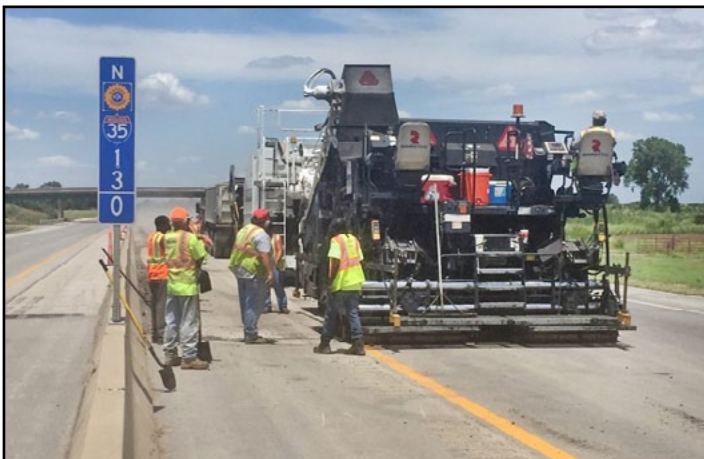
Richard Carlson

together we will preserve the world-class status of the Kansas transportation system. I want to be a part of that effort and I hope to earn your trust and respect over time. A good work environment is a priority for me. I encourage you to work with your co-workers and leaders to share with me and the executive staff your ideas to improve our work environment. To those of you in the field and out on the road, I want you to know that your safety is paramount to me. I truly appreciate and respect that your jobs can place you in harm's way. Let's continue to make sure safety holds the highest importance in all your work zones.

With my background as a former legislator, I intend to work closely with the Legislature to improve our revenue stream. I do believe that increased (and smart) investments into transportation provide a boost to the state's economy and improve the mobility of all Kansans. As we look to program limited dollars, I also know that maintaining and preserving our existing highway system should always be a top priority. Toward that end, I was extremely pleased to learn that KDOT was able to make changes that increased our 1R projects for FY 2016 to cover more than 700 miles and are planning 1R projects of more than 1,000 miles in FY 2017. It is my hope to build on your successes.

I'm very excited to be working for KDOT and with you!

KTA



An overlay paving project between mile marker 13 and the Belle Plaine Service Area on I-35/Turnpike began last week and will finish in September. The project involves resurfacing both lanes and the approaches to the southern terminal, Wellington interchange and the Belle Plaine service area ramps.

District One

Leading District One: Hugh Bogle has been named KDOT's District One Engineer for northeast Kansas. He began his duties in early July and succeeded Mike Stringer, who was selected as the Chief of Local Projects.

Bogle started with KDOT in 1990 after graduating from the University of Kansas. He spent two years in Lawrence as a Project Engineer before moving to the Garnett Area Office as a Construction Engineer. Bogle then spent a year at Headquarters in Topeka in the Bureau of Construction and Maintenance as the Field Construction Engineer. He returned to the field to become the Area Engineer in Iola and Garnett, and in August 2015, he accepted the Olathe Metro Engineer position.



Hugh Bogle

Trivia!

Gemstones

1. What are the most colorful gemstones?
2. What is the hardest gemstone?
3. How long does it take to grow a cultured pearl?

4. What was Cleopatra's favorite gemstone?
5. What was the gemstone Garnet named after?
6. What is the largest faceted gemstone?
7. What is the softest gemstone?

In Memory

Condolences to friends and family of KDOT retiree Herschel 'Joe' Shepard who died July 24. He retired from the Independence office in 1990. Joe's son, Steve Shepard, retired from Independence KDOT this year. Graveside services are at 9 a.m. on July 28 at Fairview Cemetery, Cherryvale.

District Three

An early morning storm swept through Hays on July 13, causing widespread damage throughout the area. The National Weather Service clocked wind speeds of up to 80 mph before a tree branch fell and broke monitoring equipment.



Cody Ward, Engineering Technician Senior at Hays, seen above, and other KDOT employees spent much of the day assessing damage to and making repairs on signs that were blown over along I-70. More than a dozen wood-post signs and seven steel-post signs were damaged during the storm.

District Four



Two tornadoes – the first rated EF-3 and the second an EF-2 – touched down in the city of Eureka the night of July 7. According to the sheriff's department, 92 homes were damaged, with six homes destroyed. No fatalities or storm-related injuries were reported. Gov. Sam Brownback declared a State of Emergency for Greenwood County. KDOT crews from Iola, Yates Center and the district shop at Chanute moved in that weekend to assist other organizations and individuals with clean-up activities.



Headquarters



Bob Brock, KDOT's Director of Unmanned Aircraft Systems, spoke about the current and possible future use of drones in Kansas at the annual KDOT Communicators meeting on July 21 in Topeka.

Headquarters



Top left: Former Secretary Mike King receives a Kansas City Chiefs football jersey with his high school football number during his retirement reception on July 14 in Topeka at ESOB. Top right: Several people chat with King at the reception. Above: Former KDOT and KTA employee Tara Mays speaks at the retirement reception. Left: King shares a joke with Jennifer Szambecki, KTA Director of Innovation and Partnerships.

Kudos

The following was an email sent to KDOT.
 I live in OP and drive every other month to Denver. The roads and rest stops are fine. Or so you think until you drive up to Glacier National park using I-25 North and then 90 west. Coming home through Yellowstone, Jackson Hole and finally across Wy. on I-80 east, I-25 south and then good old I-70. How much more do I appreciate how great I-70 is in Kansas. Excellent condition or roads and rest stops. Everything clearly marked. Plenty of clean rest stops. Wow! You all do great work!
 But honestly I didn't truly appreciate it or recognize it until I traveled other highways. Thank you for using our tax dollars to care for our journeys.

The following was part of an email sent to KDOT.
 Dear KDOT,
 I want to personally thank you for your response to our disaster. Without the dedication and professionalism of your crew we wouldn't be where we are today. KDOT was a key component that allowed us to complete our debris clean up efficiently and in a short amount of time. We thank you for everything you did. KDOT were all stars.

Thanks,
 Levi Vinson
 Greenwood County,
 Emergency Management

General

A reminder that all political, real estate and other types of signs posted on highway right-of-way will be removed and taken to the closest KDOT office.



Retirees

The following employees will retire from KDOT on Aug. 1.

Headquarters

Nick Higley, Engineering Technician Senior, Transportation Planning
Keith Horinek, Engineering Technician Specialist, Road Design

District One

Nancy Baker, Equipment Operator, Lawrence
Larry Nickelson, Engineering Technician, Olathe

District Three

Mitchell Favinger, Highway Maintenance Supervisor, Smith Center

Kansas Transportation

Thursday, July 21

Waste not, want not: Is pig poop the future of pavement?

We have all heard the story of the three little pigs. That third little pig was an engineering pro who stopped the Big Bad Wolf from blowing his house down. That was a great story, but what pigs could do for the future of transportation is no fairy tale.

Although still in the testing stage, students at North Carolina A&T State University and the National Science Foundation have teamed up to explore the possibilities of using pig manure as a binder, or bio-adhesive, for an asphalt substitute. Currently, asphalt requires petroleum, which is a fossil fuel and cannot be replenished as quickly.

With asphalt created with bio-adhesives, the opposite is true. According to a video produced by the NSF, 43 billion pounds of swine manure is generated in one year. In fact, some places in the world have so much pig waste that their water supplies are being contaminated. At 56 cents per gallon this renewable resource could pave the road for a more environmentally and financially-sound solution to fossil fuel dependency.

It's not just the transportation industry that could benefit from successful bio-adhesive roads; the farming industry around the world would still be able to use the leftovers from the manufacturing process as fertilizer.

Think this idea is full of it? Check out The National Science Foundation's video for a closer look at how



the process is being tested. And tell us what you think. Would you be willing to travel down a road made from pig poop?

To see more stories on other transportation topics, check out the regular posts on the Kansas Transportation blog at <http://kansastransportation.blogspot.com/>

TRIVIA ANSWERS

1. Opal and tourmaline.
2. Diamond.
3. About one to three years.
4. Peridot.
5. The seeds of a pomegranate.
6. It is a topaz that was found in Brazil and weighs almost 37,000 carats.
7. Amber.



Topeka - every Wednesday
7:30 a.m. to noon
 10th Street - south side of the Statehouse grounds

To locate/find out more about other farmers markets, check out the From the Land of Kansas website at <https://fromthelandofkansas.com/discover-resources/farmers-market-resources>

Headquarters

KDOT employees look at various pieces of art on display (right, and below right) and enjoy some ice cream (below) during the Employees' Council annual Ice Cream Social and Artwalk on July 21 at the Eisenhower Building.



KTA



Work continues at the Bazaar Cattle Pens located at MM 110 on I-35/Turnpike. Recently, stone walls have been constructed and paving completed.

South Steps Fridays

Grab your lunch, kick back and start your weekend right as you enjoy live music by the University of Kansas Jazz Band and learn more about the area attractions and activities from 11 a.m. to 1 p.m. on the south steps of the Capitol.

Upcoming dates:

♦ July 29 ♦ Aug. 12

District Two

Construction continues on the I-135 interchange at Mohawk Road, about 2.5 miles north of the I-135/U.S. 56 interchange in McPherson County. Concrete bridge beams will be placed over southbound I-135 on Aug. 2 and over northbound I-135 on Aug. 3. Traffic will be detoured onto Pawnee Road and 17th Avenue from 10 a.m. to 3 p.m. each day while this takes place. Debbie Tanking's road squad and Brad Rognlie's bridge squad designed the project.



General

(From the KDOT blog) Road preservation: Preserving Kansas roads, ranked among the top five states in America, is a priority at KDOT. The right maintenance at the right time—whether it's chip sealing, crack sealing, asphalt overlay, resurfacing or patching—helps extend the life of the pavement for many years and protects the investment we have made in our Kansas highways.

In fiscal year 2016, more than 700 miles of preservation work occurred. Under current KDOT budgeting, preservation is projected to increase to 1,000 miles in fiscal year 2017 and 1,200 miles in fiscal year 2018. One-hundred bridges were estimated to be repaired or replaced in fiscal year 2016, but by the end of the year, 117 projects were completed. In fiscal year 2017, 160 bridges are scheduled for work under current KDOT budgeting.

"Orange barrels are blanketing Kansas roadways as KDOT continues to provide one of the best transportation systems in the nation," Interim Secretary Richard Carlson said. "Preservation is an essential element of KDOT and is a proactive approach to meeting the transportation needs of our state."

This fiscal year, KDOT will spend two times more on preservation projects than the year Governor Brownback took office. Expansion and enhancement projects will jump over \$10 million during the same period, while modernization projects will increase by nearly \$10 million.



Above, a section of I-70 in Sherman County before preservation work, and at left, that same section after preservation work.

Rail

KDOT Freight and Rail Manager John Maddox speaks at the rail forum on July 20 in Wichita where public input is being sought on both passenger and freight railways to help update the Kansas Statewide Rail Plan.

