

Translines EXPRESS

May 20, 2015

Traffic Safety

“Click it. Or ticket.”: Not everyone can remember a single bad decision, but Sarah Snyder can. “The absolute worst decision I’ve ever made,” Snyder said. “Not buckling my seat belt before we started driving around.”

Snyder spoke at a May 13 news conference in Wichita announcing added enforcement for the annual “Click it. Or ticket.” period in Kansas from May 18 to May 31. In high school Snyder went out with friends one night, riding around in a convertible without her seat belt on. The car crashed, throwing Snyder from the vehicle and leaving her paralyzed.

“There is one thing that makes me very sad to this day,” Snyder said. “It’s knowing that my injury is 100 percent preventable. If I would have taken the three seconds to buckle up, I wouldn’t be here speaking today.”

During the next few weeks law enforcement will be working overtime to enforce Kansas’ seat belt law.

“We’re doing extra enforcement because anything less than 100 percent seat belt usage is unacceptable,” said Capt. Gavin Seiler, Acting Deputy Chief of the Wichita Police Department. “In Kansas we can and will pull you over for not wearing a seat belt. When we do, we will give you a ticket and you will pay a fine.”

Sarah Snyder, a paraplegic crash victim, tells about the worst decision she ever made to not buckle her seat belt at the “Click it. Or ticket.” event on May 13 in Wichita.



Kansas Transportation

Monday, May 18

Motoring Monday



We’re bringing back our Motoring Monday series which recommends some of the lesser known things and places to see in Kansas. In honor of the upcoming Memorial Day weekend, we’re featuring the Kansas Vietnam Veterans Memorial.

Located on the east side of Heritage Park in Junction City, the Kansas Vietnam Veterans Memorial was dedicated on July 4, 1987. In 1991, it was designated as the official State Vietnam Veterans Monument. The memorial is made of seven black granite panels measuring 13 feet high and 46 feet long. End panels contain the names of the Kansas veterans who were killed or listed as Missing In Action from the Vietnam War. The center panel is two soldiers flanking a Vietnam Campaign Medal and a Purple Heart Medal. In addition to this memorial, Heritage Park also features Civil War Arch, 1st Infantry Division Memorial, Junction City / Geary County Law Enforcement Memorial, POW/ MIA Memorial, Purple Heart Memorial, bandstand and water fountain.

For more details on the memorial, click [here](#).

To see more stories on transportation topics, check out the regular posts on the Kansas Transportation blog at <http://kansas transportation.blogspot.com/>

Trivia!

Kansas native plants – part two – May 20

1. The juice of the leaves of this plant can be applied to relieve the burning sensation of stinging nettle and the itch of poison ivy.
2. What are the four major tallgrasses?
3. What is considered one of the most important plants gathered as wild food by Native Americans of the Great Plains?
4. What plant is sometimes called “cow-slobbers” because of the mucilaginous slimy substance in the stem?
5. How much of the nation’s tallgrass prairie remains intact? And how much of it is in Kansas?

KTA



Concrete patching is now taking place on I-70 near the east Topeka toll plaza at milepost 183. Since this project began on April 20, the contractor has completed patching on the four ramps and loop connecting the Turnpike to K-4 and I-70 at milepost 182. The work should be completed in early June.

Headquarters

Getting involved:

The number of monarch butterflies has decreased 90 percent in the last 20 years. Students at Most Pure Heart of Mary School in Topeka were concerned about this.

They planted milkweed gardens at school and at home, they asked people to plant gardens and sent petitions to organizations encouraging them to help.

KDOT received some of the petitions and set up a presentation.

KDOT Environmental Scientist Scott Shields and KDWP&T District Wildlife Biologist Brad Rueschhoff spoke to the fifth and sixth graders on May 11. They talked about the many ways state agencies are already working to help the



Scott Shields from KDOT, center, and Brad Rueschhoff from KDWP&T speak to students at Most Pure Heart of Mary School in Topeka about the environment and monarch butterflies on May 11.

environment, like including milkweed in the wildflowers mixes that have been planted along highways since 2004, and also talking with landowners across the state about things they can do to help the monarch population.

District Six

When you need a ditch:

Modernization is coming to the Syracuse Subarea shop that could create some drainage issues for the Subarea and Area complex. In anticipation of the construction that should start this fall, the Subarea crew under Highway Maintenance Supervisor Neil Schroll has created a new drainage ditch to handle the expected runoff once the project is completed.

“Everybody worked on this job,” Schroll said, “but I really want to single out Jeff Oglesbee (Equipment Operator Senior), who helped survey the grade for the ditch and did most of the backhoe work.”

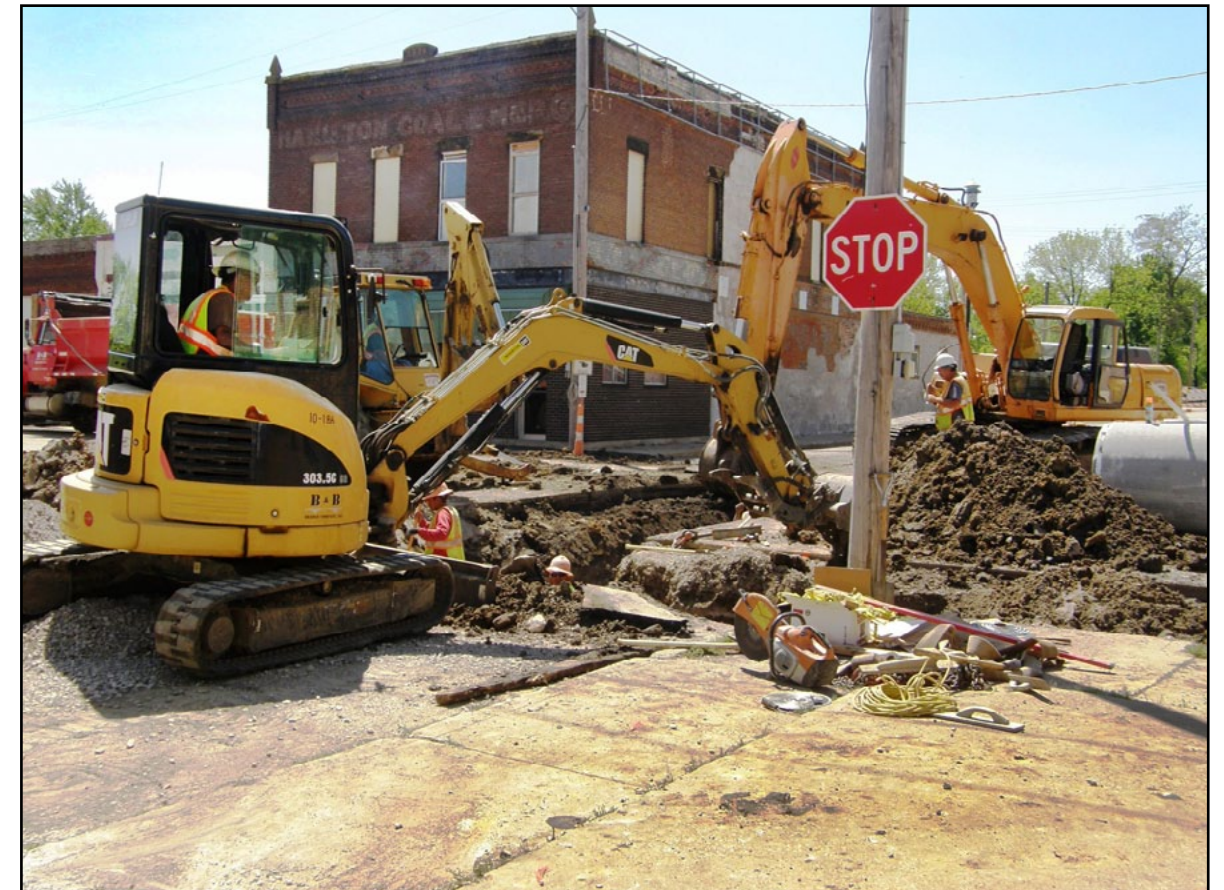
In addition to Schroll and Oglesbee, the Syracuse Subarea crew included Josh Nolan (Equipment Operator Senior) and David Cartwright (Equipment Operator). The modernization project will cost \$716,000 and will create four drive-through bays.



A drainage ditch was built to reduce runoff problems once upgrades to the Syracuse Subarea are complete.

District Four

In late April work began to reconstruct K-103 (Main Street) from Lincoln to Jefferson streets inside the city of Weir. The K-103 project is part of KDOT’s Geometric Improvement Program. B&B Bridge Company of St. Paul is the contractor on the \$583,321 improvement. Traffic is detoured around the work zone.



Run for the Wall

Hundreds of motorcyclists traveled through Kansas May 16-18 en route to Washington D.C., to honor military veterans as part of the 27th annual Run for the Wall national event. The group stopped at the Topeka Turnpike service area on Monday to get gas (below, right) and were welcomed by the KTA, KDOT and the Kansas ABATE chapter. Run for the Wall recognizes the sacrifices and contributions made by veterans who have served the U.S. and supports military personnel all over the world.



People wave to the participants in the Run for the Wall event (above) as they leave the service area and continue their journey to Washington, D.C. (left).

District Four



At left is the old railroad overpass on K-39 at the eastern edge of Chanute, and below is the new bridge that has replaced it. B&B Bridge of St. Paul was contractor on the \$1.7 million project, which lasted one year. The new bridge has a 44-foot roadway and is lower than the previous structure. A section of the Katy Hike/Bike Trail that runs underneath was paved as part of the project.



Bike Month

Share the road with bikes: May is National Bike Month and gives people an opportunity to highlight the benefits of bicycling. According to the League of American Bicyclists, the number of bicycle commuters in the U.S. grew more than 62 percent from 2000 to 2013. Many of the reasons include saving money on gas, helping the environment and enjoying the sport. A few tips to remember while bicycling:

- ♦ Always wear a helmet
- ♦ Obey the same rules of the road as drivers
- ♦ Ride on the right side of the road
- ♦ Be aware of motorists around you



Bicyclists should follow the same rules of the road as drivers.

- ♦ Use correct hand signals when turning
 - ♦ Reduce distractions and pay attention
- For more information on bicycling, go to KDOT's Bicycle and Pedestrian Transportation webpage [here](#).

District One

Virtual Drive

Video Series:

Motorists can now 'virtually drive' the completed Johnson County Gateway Phase 2 Design-Build Project via a series of videos released Monday. KDOT, along with the project contractor Gateway Interchange Constructors, launched the series to provide a drive-through and aerial view look of the Phase 2 project scheduled for completion in December 2016. It

also show motorists the final interchange configuration and how travel will be improved through the area.

Some of the major improvements include adding new two-lane flyover bridge ramps from westbound I-435 to southbound I-35, eastbound I-435 to northbound I-35 and from eastbound K-10 to northbound I-35. Collector-distributor roads will reduce weaving and separate interstate traffic from traffic exiting at the local interchanges.

The entire Johnson County Gateway Project video series



This is one of the five virtual drive videos featuring the Johnson County Gateway Phase 2 project.

is available on the project website: <http://jocogateway.com/news-info-events/video-gallery/>. The five videos will cover:

- ♦ Follow-along simulation of entire project
- ♦ Aerial overview simulation of entire project
- ♦ Westbound I-435 to southbound I-35 improvements
- ♦ Eastbound K-10 to northbound I-435 and I-35 improvements
- ♦ Westbound K-10 to Ridgeview Road improvements

TRIVIA ANSWERS

1. Spotted touch-me-not, *Impatiens capensis*
2. Big bluestem, little bluestem, Indian grass, switchgrass
3. Breadroot scurfpea, *Pediomelum esculentum*.
4. Spiderwort, *Tradescantia*
5. About 4 percent. About 95 percent is in Kansas.