

Translines EXPRESS

Feb. 11, 2015

KDOT Blog

Kansas Transportation

Tuesday, Feb. 10

Senators Moran and Roberts discuss Kansas aviation issues



Transportation Secretary Mike King and Jesse Romo, KDOT's Director of Aviation, participated in a round table discussion with Kansas Senators Jerry Moran and Pat Roberts and aviation officials from across the state on Monday.

The discussion focused on the need for a Federal Aviation Administration reauthorization bill and what federal funding programs are most important for Kansas airports. Both senators were optimistic about getting a reauthorization bill passed this session.

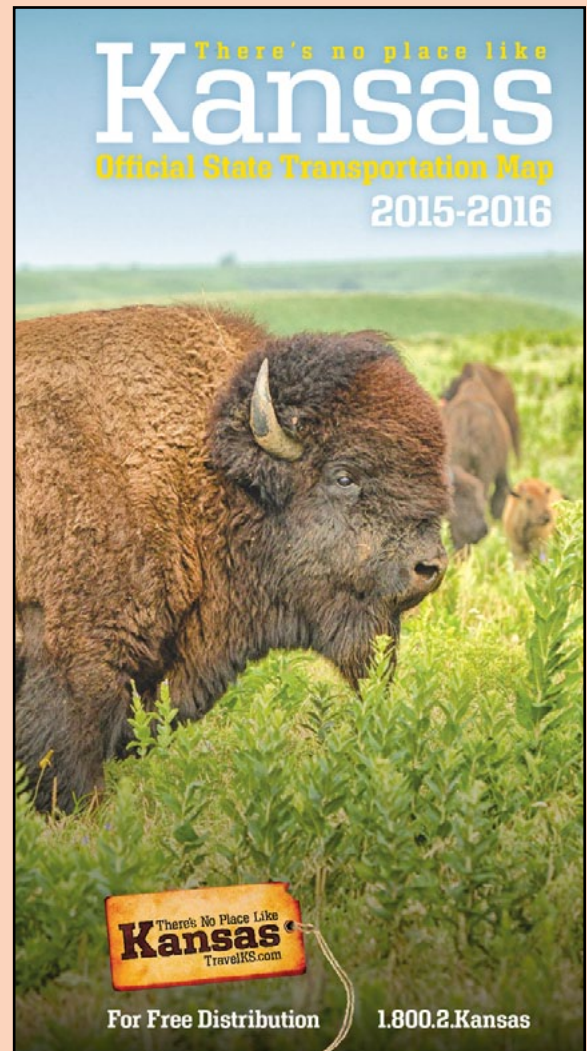


To see more stories on other transportation topics, check out the regular posts on the Kansas Transportation blog at <http://kansastransportation.blogspot.com/>

In Memory

Condolences to friends and family of KDOT retiree David Reed who died Feb. 7 in Altoona. He worked at KDOT for 35 years and was the Subarea Supervisor in Fredonia and Altoona prior to his retirement in 1996.

State Map



New state maps available: Whether you want to drive across the state, find the closest airport, discover new places of interest or check out a state lake, the new 2015-2016 Kansas Official State Transportation Map published by KDOT has it all.

"The state map offers so much more than just directions – it's a great source of information for those traveling or just want to learn more about Kansas," said Secretary Mike King. "It's always good to have a state map handy." Maps are available at various travel information centers, attractions and other locations across the state. They can also be requested on the KDOT website at <http://www.ksdot.org/maps.asp>.

KTA



KTA Chief Executive Officer Steve Hewitt and Director of Innovation and Partnerships Jennifer Szambecki host a fireside lunch for the Downtown Wichita Rotary club at the Turnpike's headquarters on Jan. 26. They told the members about tolling and how K-TAG can simplify travel.

District One

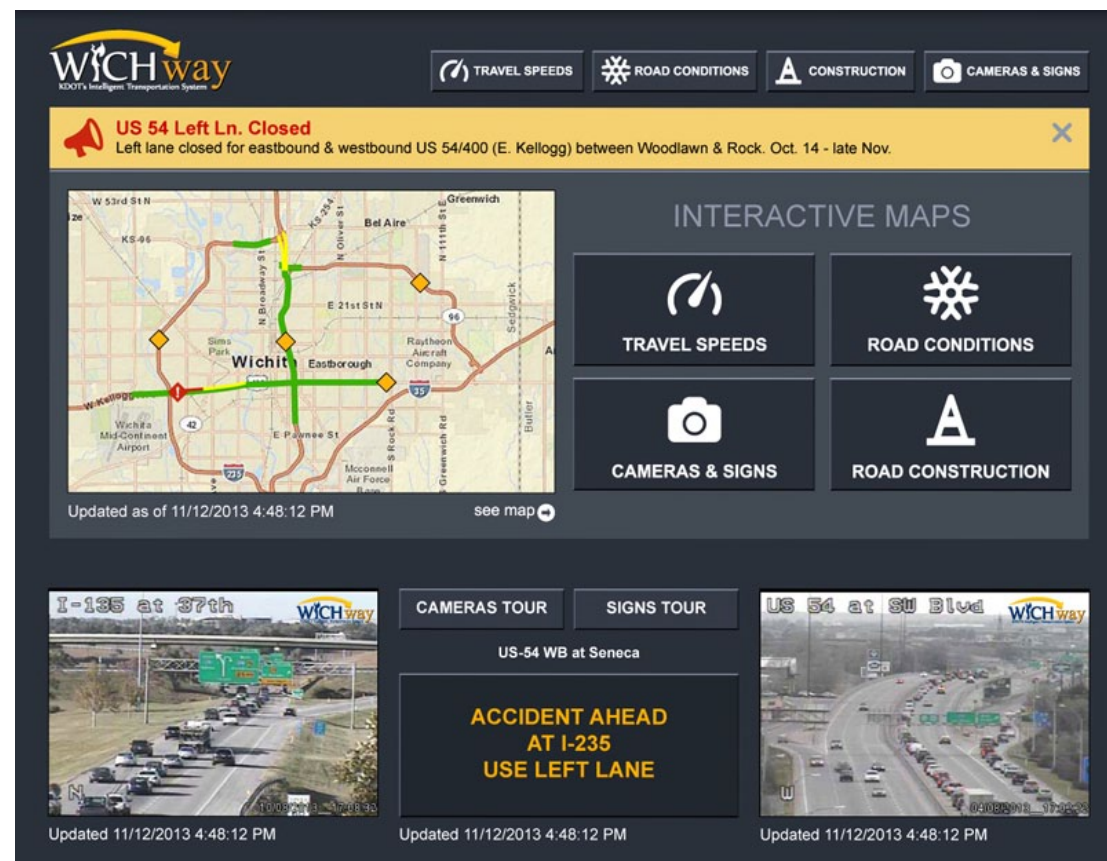
Maintenance crews treated U.S. 75 in Topeka when snow came through on Feb. 4. The storm didn't last long and accumulations in the area were less than two inches.



WICHway

The WICHway traffic management website was the subject of a Feb. 4 webinar in the FHWA series that focuses on GIS (geographic information systems) in transportation. The webcast series is intended for planners and GIS practitioners from state departments of transportation, metropolitan planning organizations, FHWA division offices plus state and federal resource agencies.

With a redesign of the WICHway website, the KDOT project committee wanted to continue the functionality of the original website but looked to incorporate innovative ideas that would enhance the delivery of information – especially to mobile users. With a short timeline, the new WICHway.org website was created and launched, and is being used successfully on desktops, laptops, tablets and smartphones.



KDOT project manager Mary Beth Pfrang and project sponsor Tom Hein presented the hour-long webinar with Brian Sovik from Data Transfer Solutions, the project's consultant project manager.

Bridge



At left, Better Roads featured this trestle bridge in Iowa - it is part of the 25-mile High Trestle Trail in Madrid, which opened in 2011. The half-mile long, 13-story high bicycle-pedestrian bridge was originally built in the 1970s as a railroad bridge, but it has been transformed in recent years. The bridge decking incorporates a structure that represents the view through a mine shaft, to honor Italian immigrants who worked in nearby mines. Below, decorative lighting can be seen on the bridge at night. For more details on the bridge, click [here](#).



District Three



Curves like the one behind the vehicles will be straightened out during this project on K-27.

Improvements to K-27: Work on a five-mile stretch of K-27 south of Sharon Springs in Wallace County is expected to begin in early March. The construction is part of KDOT's T-WORKS program and is a modernization project that will involve roadway reconstruction to straighten curves and add shoulders. The project extends from two miles south of the U.S. 40 junction to

seven miles north of the Wallace/Greeley County line. Construction will last through the summer and fall. The roadway is expected to be open to traffic by mid-November and should be fully completed by spring 2016. Venture Corporation of Great Bend is the prime contractor on the project. Stephen Bass's road squad and Chris Meyer's bridge squad designed the projects.

Aviation Day



Greg Inkmann of Foundation for Aeronautical Education, Inc., speaks to people attending KDOT's Aviation Day event at the Capitol on Feb. 3. Other companies that participated included Bombardier Learjet, Spirit AeroSystems, Textron Aviation, Kansas Association of Airports, Kansas State University, National Institute for Aviation Research, the Kansas Agricultural Aviation Association, Dodge City Community College, Wichita Area Technical College and LifeTeam.

Retirees

The following employees retired from KDOT in February.

Headquarters

George Laliberte, Public Service Executive II
Connie Spencer, Program Consultant I, Transportation Planning

District Four

Steven Sisney, Equipment Operator Senior

District Five

Stephen Grosse, Equipment Operator Specialist

District Six

Sherry Martin, Equipment Operator Specialist
Steven Gerber, Equipment Mechanic Senior

District Five/District Six

Study overview:

KDOT is initiating a study of 34 miles of the U.S. 50 corridor in Ford and Edwards counties. The study area begins at the east city limits of Dodge City and continues to the intersection of U.S. 50 and U.S. 56 west of Kinsley.

Alfred Benesch and MRIGlobal are working in conjunction with KDOT to study potential improvements as a result of public comments and concerns

expressed during Local Consult meetings in 2012. This includes a focus on passing lane additions that would ease travel by improving passing opportunities along U.S. 50 now and into the future. The team will also evaluate potential improvements to three intersections on U.S. 50 in Spearville as well as other enhancements along the corridor. The study will be complete in fall 2015. There is no funding for future



At left, District Engineer Larry Thompson talks to attendees at the meeting on a U.S. 50 passing lane and intersection study on Feb. 5 in Spearville. The study area is in both District Five and District Six. Other KDOT staff attending included Dodge City Area Engineer Dale Luedke, Pratt Area Engineer Scott Mullen, Road Design Leader Stephen Bass, and Public Affairs Managers Kirk Hutchinson and Martin Miller.

construction at this time.

KDOT is seeking the public's opinions and priorities for U.S. 50. Involving the public in this process will provide citizens the opportunity to engage in study efforts and provide valuable feedback. Stephen Bass's road squad and John Jones's bridge squad are designing the projects.

Have an idea for a news brief or picture that could be featured in an upcoming edition of Translines Express?

Please e-mail your suggestions to translines@ksdot.org

Legislature

2015 Legislature: A number of bills that impact KDOT or traffic safety are moving through the legislative process. Below are a few of those:

Rescission bill: On Tuesday, Gov. Brownback signed legislation that will allow the state to finish the current fiscal year in the black. The legislation transfers money from the State Highway Fund to the State General Fund and other state agencies.

Hands-free: A House committee on Tuesday discussed a bill banning all but hands-free use of cellular telephones by drivers.

Seat belts: The House Transportation Committee heard testimony Tuesday on a bill that would



increase the fine for adult infractions of the state's seat belt law to \$60 from \$10.

Bus on shoulders: A bill that would authorize the Secretary to allow buses to travel on shoulders on I-35 into Wyandotte County from Johnson County was discussed in the Senate Transportation Committee last week. This would extend the bus on shoulder initiative in the Kansas City area to 17 miles from the current 13.4 miles (in Johnson County).

Passing speed: A bill has been discussed in the House Transportation Committee that would allow drivers to exceed the speed limit when passing on certain two-lane highways.

Trivia!

Films made in Kansas:

1. Name this movie made in Kansas in 1987 starring Matt Dillon and Andrew McCarthy.
2. Name this movie made in Kansas in 1973 starring Ryan O'Neal and Tatum O'Neal.
3. Name this movie made in Kansas in 1967 starring

Robert Blake, Scott Wilson and John Forsythe.

4. Name this movie made in Kansas in 1956 starring William Holden and Kim Novak.
5. Name this movie made in Kansas that was released in 1983 starring David Carradine and Barbara Hershey.

Missouri

MoDOT budget reductions: Last week the Missouri Highways and Transportation Commission approved the "Missouri's 325 System" plan to work with a drastically reduced construction budget, according to a Missouri Department of Transportation news release. The plan's name refers to MoDOT's construction budget that is set to drop to \$325 million in 2017.

This means MoDOT will have to focus its limited resources on only about 8,000 miles of Missouri's 34,000-mile state highway system. The remaining miles of roads and bridges will make up the state's supplementary system and will receive only limited routine maintenance. MoDOT crews will do the best they

can to maintain roads and bridges on the supplemental system with internal resources, however, it won't be enough to keep supplementary roads from deteriorating over time.

In addition, Missouri won't be able to match federal funds in 2017.

"This action truly sets the stage to transform Missouri's transportation system and dramatically change the way we do business," said Commission Chair Stephen Miller. "After years of making great progress on the condition of Missouri's highways, we now face a future of watching our roads and bridges deteriorate."

TRIVIA ANSWERS

1. Kansas
2. Paper Moon
3. In Cold Blood
4. Picnic
5. Americana