

Translines EXPRESS

Aug. 24, 2016

General



Muriel, the world's last known original 1935 Lockheed Electra L-10E, makes her way along the streets in Atchison. More information about this plane and its journey are in this edition.

Fatality

Fatality accident: KDOT Equipment Operator Darren Way was killed in a mowing accident on Aug. 18 in western Kansas. Way, 39, died when the riding mower he was operating overturned, pinning him beneath. It happened as he was mowing along Interstate 70 in Sherman County.

"We are saddened at the loss of our co-worker and offer our condolences to Darren's family, friends and co-workers," said Interim Secretary Richard Carlson. "They are in our thoughts and prayers as they cope with this tragedy."

Darren's father, Curtis Way, is a retired Equipment Operator Specialist who worked out of the St. Francis Subarea.

Way had worked at Goodland's Subarea since September 2014.

District Two

Long-term solution: At remote sites across the state, equipment used for loading dump trucks with salt or salt/sand is exposed to the elements except for canvas-covered shelters. Those tied-down fabric covers are subject to tearing and are weakened by sun, rain, snow and wind. They need replaced over time, which increases costs and takes time to repair.

One of the equipment shelters was in need of repair. The Ellsworth Subarea crew, led by Delvin Schultz, decided to find an alternative that would provide long-term protection.

The solution was to reskin the shelter with tin sheeting. This shelter will be home for a tractor with a loader attachment this coming winter and should serve the Subarea crew for years to come. It was built on one of the largest mixing strips in District



Employees at the Ellsworth Subarea office placed tin sheeting on this equipment shelter to help improve its durability.

Two, located just north of I-70 near K-14 in Ellsworth County.

Trivia!

Cars

1. What was the first car to break 200 mph in NASCAR history?
2. What was the brand name that Nissan was known as before?
3. Volkswagen named many of its cars after this.
4. On average how many parts does it take to make a car?
5. What was the first car to have a cd player?
6. What was the last car to have an optional cassette player?

Retiree

District Two

Sandra Koetkemeyer,
Administrative Assistant, Salina

District Five

Dennis Graves, Equipment
Operator, Great Bend

KTA



Crews pour concrete for the parking pad at the Bazaar Cattle Pens improvement project along the Kansas Turnpike.

Johnson County Gateway

The ribbon cutting ceremony to mark the completion of the 95th Street and I-35 interchange took place on Aug. 9 in Johnson County. At right, Bill Clarkson Jr. speaks at the event. To see a video of the ribbon cutting event, click [here](#).



In the photo at left, participating in the ribbon cutting were, from left to right, KDOT Interim Secretary Richard Carlson, GIC's Bill Clarkson Jr., Lenexa Council Member Mandy Stuke, Lenexa Mayor Mike Boehm, Lenexa Council Member Andy Huckaba, KDOT Project Director Paul Gripka, GIC Construction Manager Chad Bird and James Cain with Hearing Today Labs. Below, the interchange at night.

General

Plane makes journey home:

The world's last known original 1935 Lockheed Electra L-10E named "Muriel" began her journey home to Atchison on Aug. 15. Muriel is the last of the 14 L-10Es built and identical to the plane Amelia Earhart and her navigator,



Muriel traveled from California and arrived in Kansas on Aug. 22. Photos courtesy of the Murielsjourney Facebook page.

Fred Noonan, were flying in 1937 on their attempt to be the first to circle the globe as closely to the equator as possible. Earhart and Noonan had been given faulty coordinates for Howland Island, a tiny mile-and-a-half spec of land 2,556 miles east of Lae, New Guinea. Discovery of the faulty coordinates was made in 1983 by pilot Grace McGuire.

For 34 years, McGuire owned, maintained and restored Muriel. When Muriel was at risk of being relegated to the trash, McGuire rescued the aircraft and planned to recreate Earhart's world flight the old fashioned way using the same model airplane as Earhart's. But a severe illness caused her to shelve

her plans. An exact duplication of the flight has never been made using the same model plane as Earhart's. Muriel was named by McGuire to honor Amelia Earhart's sister Muriel. The Atchison Amelia Earhart Foundation recently adopted the restored aircraft with plans to build a hangar/museum as her permanent home.

The plane was transported as a super wide load from Gillespie Field Airport in El Cajon, Calif., through Arizona, New Mexico, Texas, Oklahoma and Kansas, arriving in Atchison on Aug. 22



TRIVIA ANSWERS

- | | |
|--|---------------------------------------|
| 1. 1969 Dodge Daytona | Stream, Jetta, after Jet stream |
| 2. Datsun | 4. 30,000 |
| 3. Winds. Passat, after the German word for trade wind, Golf, after Gulf | 5. 1987 Lincoln Town Car |
| | 6. 2010 Lexus and Ford Crown Victoria |

Kansas Transportation

Tuesday, Aug. 16

Are you addicted?

It's a common message: "Don't Text and Drive." The dangers of texting and driving are real and yet lives are still forever changed when that split-second glance behind the wheel turns that smart phone into a dangerous weapon. With all the warnings and advisories filling our airwaves why is it so hard for us to drive distraction free?

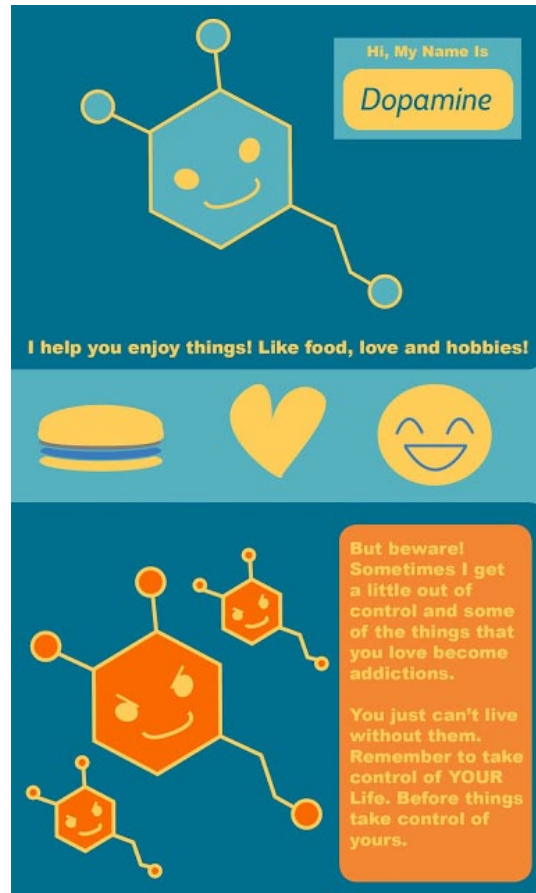
Scientists and psychologists may have an answer to that.

The Science:

Inside our brains lives a little compound called "Dopamine." It is what gives us the drive to pursue the things we love such as eating, hobbies, and romance. According to Psychology Today, Dopamine is also responsible for various addictions that we deal with on a daily basis. For some of us, if our bodies were like vehicles, Dopamine would be the pilot.

The Psychology:

Over 100 years ago a Russian Physiologist, Ivan Pavlov, made a huge behavioral discovery: classical conditioning. Using dogs and food he was able to deduce that they would start drooling anytime he or his assistants entered the room, even if they didn't have food. The dogs' brains were hardwired



to expect a reward, (food) when they saw lab coats. Pavlov further tested this process when he struck a bell at meal times. Eventually, he struck the bell without food and the dogs still salivated.

Mixing it together:

Dopamine, the reward center of our brains, mixed with the classical conditioning combines to what we deal with on an everyday basis: Technology addiction. When the message alert goes off on our cell phones, we immediately respond. Dopamine levels rise, and we get a "reward" when we pick up our phones. Remarkably, there are times when we want to be rewarded so much that we look at our phones without the alert,

and expect something to happen.

Studies have shown that when the alerts go off anxiety levels rise if they can't be answered right away. If cell phones are left at home or lost, withdrawal symptoms are reported. Some would even say that they couldn't live without their phones and for many, this is a reality. These tiny devices hold our schedules, our contacts, important information and there are even apps that save lives. As a society, our phones connect us to the world around us, and for many, that connection is just too strong to ignore.

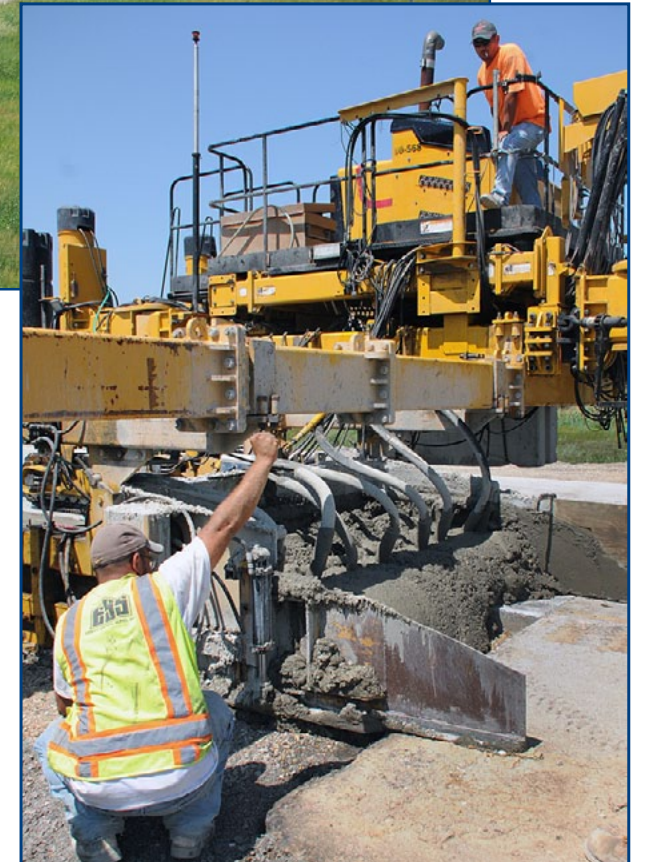
All of these things combine to make texting and driving a serious habit that is hard to break. Even with all these behavioral and scientific answers, it is still wise to turn your phone off or on silent, tuck them away, watch the road, and drive. It can wait.

To see more stories on other transportation topics, check out the regular posts on the Kansas Transportation blog at <http://kansastransportation.blogspot.com/>



SLT

Above, traffic travels through the construction zone on the east side of Lawrence where the new South Lawrence Trafficway ties into the existing K-10. At right, the last section of the mainline pavement to connect the SLT to K-10 was poured last week. Other work remaining includes bridges, paving, permanent pavement markings, signing, grading and permanent seeding. The project is expected to be open to traffic in November.



Traffic Safety

Making choices: Janell Blaufuss is often reminded of other people's choices. It was her father's choice to go jogging early in the morning before heading to work. It was a driver's choice to drink and drive. The two choices came together when a drunk driver hit and killed John Blaufuss in December 2005.

"No Christmas has ever been the same," Blaufuss said. "We were such a big, happy family who loved to get together. No one had more fun than my father. There are so many places that he is missing." Blaufuss spoke at an Aug. 17 event announcing, "You drink. You drive. You lose." enforcement at Exploration Place in Wichita. From Aug. 18 through Sept. 5,



increased law enforcement efforts will focus on impaired drivers.

The Wichita Police Department is one of 150 law enforcement agencies participating. "Drunk driving in Kansas is one of the deadliest and most often committed crimes," said Wichita Deputy Chief Gavin

Seiler. "Law enforcement is highly-trained to identify impaired drivers and we will be out in full force to stop them. The safety of Kansans is our primary concern." Last year in Kansas, there were 2,291 alcohol-related crashes, with 75 fatalities and 1,300 injuries. That's one person killed every three days and five people injured every day.

Aviation

Drone task force selected: A task force has been named to identify ways state agencies can incorporate drones into their operations. The Unmanned Aerial Systems (UAS) Joint Task Force will also examine what state government needs to do to make the use of drones conducive to private sector needs. "We want to explore the sharing of ideas utilizing commercial applications of drones to improve efficiencies of state operations, such as using drones for bridge inspections, and also private sector applications," said Interim Kansas Transportation

Secretary Richard Carlson. Named to the task force are Josh Row, Assistant Secretary of Agriculture; Billy Brown, Agribusiness Development Coordinator for the Department of Agriculture; Matt Keith, Director of Research for the Department of Commerce; Chris Tymeson, Chief Counsel for the Department of Wildlife, Parks and Tourism; Frank Papish, Assistant Director of the KBI; and Ron Seitz, Chief of KDOT's Division of Engineering and Design. The task force will meet quarterly.

General

According to a Better Roads article, while browsing Google Earth or searching an address inside Google Maps, an unusual image may appear. It happens from time to time. Though Google's 3D representation of the world gives users the ability to see locations around the world, every once in a while a landmark or a piece of infrastructure that makes you tilt your head.



Clement Valla explains that these odd-looking, almost surrealist representations of the world aren't a glitch. "They are the absolute logical result of the system," Valla writes in an introduction to the site. "They are an edge condition—an anomaly within the system, a nonstandard, an outlier, even, but not an error. These

Images on Google Maps may look unusual at times.

jarring moments expose how Google Earth works... Google Earth is a database disguised as a photographic representation."

CAPITOL MID-WEEK FARMERS' MARKET



Topeka - every Wednesday
7:30 a.m. to noon
 10th Street - south side of the Statehouse grounds

To locate/find out more about other farmers markets, check out the From the Land of Kansas website at <https://fromthelandofkansas.com/discover-resources/farmers-market-resources>

Poster Art Contest

Kansas kids ages 5 through 13 are invited to enter artwork representing their thoughts on "Put the Brakes on Fatalities." Three statewide winners will be selected from the 18 regional winners!

Age Categories

5 to 7 years old
8 to 10 years old
11 to 13 years old

Each regional winner will receive a **BICYCLE** and **HELMET** from Safe Kids Kansas

Statewide prizes – \$50 Visa cards, movie passes, PLUS family hotel and entertainment packages:

- ◆ **Wichita:** Best Western Airport Inn/Exploration Place
- ◆ **Topeka:** Capitol Plaza Hotel/Kansas Children's Discovery Center and Topeka Zoo
- ◆ **Kansas City:** Crowne Plaza Kansas City-Overland Park Hotel/Prairiefire

Visa cards courtesy of the Petroleum Marketers and Convenience Store Association of Kansas/Movie passes courtesy of AAA Kansas

◆ All entries must be postmarked by **September 23, 2016**, to be eligible.

For rules and more information, go to www.ksdot.org

Celebrating 30 years of service

You are cordially invited
to attend a
Retirement Reception
honoring

Jerome T. Younger
Deputy Secretary
State Transportation Engineer

Wednesday, September 7, 2016
2:00-4:00 p.m.

Eisenhower State Office Building
Auditorium

700 SW Harrison,
Topeka, KS 66603

