

# Translines EXPRESS

July 13, 2016

## District One



*The new I-70 eastbound lanes were paved recently between Riverview Avenue and 118th Street in Bonner Springs as work continues on the I-70/K-7 interchange. Clarkson Construction Company is the prime contractor on the \$21 million project.*

## Headquarters

### State's first UAS director

**named:** A 22-year U.S. Air Force veteran has been selected to be Kansas' first Director of Unmanned Aircraft Systems (UAS).

Bob Brock, a Pittsburg native who retired from the Air Force as a lieutenant colonel, will oversee the establishment of policy and procedures for the operation of UAS, or drones, in Kansas. During his Air Force career, Brock gained experience in UAS operations and training. He also served as a flight safety officer and instructor pilot.

Brock said that among his priorities will be protecting the privacy and public safety of Kansans as drones become part of our world.

"Our team will work very closely with the FAA, universities and aviation leaders to deliver systems that make Kansas safer, provide economic growth and also save time and money," said Brock.



**Robert Brock**

**Kansas**  
Department of Transportation

**Kansas Turnpike Authority**

You are invited to attend a  
**Retirement Reception**  
for  
**Mike King**  
Secretary of Transportation  
Director of Kansas Turnpike Authority  
July 14, 2 - 4 p.m.  
ESOB - 4th floor auditorium

## Trivia!

### Summer

1. When are the “dog days of summer?”
2. What famous international landmark is six inches taller in the summer than in the winter because of its expanding iron?
3. What year was the first modern summer Olympic Games? Where were they held?
4. People who spend the summer throwing a Frisbee back and forth owe their game to a pie maker – what was his name?
5. Watermelon is a popular summertime treat – about how much of a watermelon is water?

## Headquarters

**Ex-legislator joins KDOT:** Liberal native Reid Petty, who served in the Kansas House of Representatives in 2013 and 2014, is KDOT’s new point person at the Kansas Legislature. While serving in the House, Petty was on the Transportation Committee for two years and the Transportation and Safety Budget Committee for a year. He attended the University of Kansas and earned a bachelor’s degree from Oklahoma Panhandle State University.

Petty also has a background in education as both a teacher and a member of the board of education in Liberal. Petty has media experience at KSCB radio and as a contributor to the Leader and Times newspaper, both in Liberal.



Reid Petty

## Great Bend Transload Facility



Above, local and state officials break ground for the Great Bend Transload Facility. Below, KDOT Rail and Freight Manager John Maddox, right, talks with Mike Zamrzla, Deputy State Director for Sen. Jerry Moran, left, and Pat Cedeno, Senior Vice President of Marketing and Sales for WATCO Companies, center, at the ceremony.

## District Five

At right, Equipment Operator Gary Lewis from the Great Bend Subarea, flags traffic along K-14/K-96 just south of Sterling and north of the Arkansas River. Traffic was reduced to one lane from July 6 to 10 because of flooding on part of the roadway seen in the photos below.



**Transload facility underway:** State, local and rail officials officially kicked off construction of the Great Bend Transload Facility on July 6 at a ground-breaking ceremony.

The shipping center, which will be constructed west of Great Bend at the airport, will provide the infrastructure necessary to move goods from one mode of transportation to another, or, in this case, from truck to rail and rail to truck.

“This is a great example of a public-private partnership that will benefit not only the city but the entire region. It creates opportunities for economic development, jobs and enhanced shipping efficiencies,” said Secretary Mike King. “It will have great benefits for farmers and manufacturers.”

Great Bend was selected for the transload facility last year by the Transload Facility Site Analysis Selection Committee, which includes public and private sector representatives. KDOT will contribute \$3 million to the \$6.8 million project.

The consortium that developed the proposal for the



facility comprises the city of Great Bend, the Great Bend Chamber of Commerce and Economic Development, Kansas and Oklahoma Railroad (K&O), and Kansas Transload Services. Sherwood Companies of Oklahoma City will operate the facility, which is expected to be in operation by the end of the year.

## TRIVIA ANSWERS

1. Between July 3 and August 11 and are named after the Dog Star (Sirius) in the Canis Major constellation.
2. The Eiffel Tower
3. 1896, in Athen, Greece.
4. William Frisbie. When inverted, his pie plates were found to be easily thrown. The spelling was changed to avoid trademark infringement.
5. About 92 percent.

## CAPITOL MID-WEEK FARMERS' MARKET



Topeka - every Wednesday

7:30 a.m. to noon

10th Street - south side of the Statehouse grounds

To locate/find out more about other farmers markets taking place in Kansas, check out the From the Land of Kansas website at <https://fromthelandofkansas.com/discover-resources/farmers-market-resources>

## District Four

### Bridge improvements:

The demolition of two bridges on K-39 east of Chanute has begun, with crews first working on the Big Creek drainage bridge seven miles east of U.S. 169. The Big Creek bridge, seen above, along with the nearby bridge over Draw Creek, were closed to traffic in early June. B&B Bridge Company of St. Paul is the primary contractor on the \$1.5 million bridge replacement project, which is expected to be finished in the summer of 2017. K-39 traffic is being detoured on U.S. 59, K-47 and U.S. 169. Since many locals will continue to use county roads instead of the state route detour, KDOT coordinated with Neosho County so that a bridge replacement on Road 210, seen at right, could be completed prior to the highway closing. B&B Construction was the contractor on the county bridge replacement, which cost \$508,372.



## District One



**I-70 resurfacing continues:** Work continues on a 12.6-mile preservation project on I-70 from the east KTA toll gate to Urish Road in Topeka. Project work includes pothole patching followed by a three-inch asphalt overlay and ultra-thin bonded overlay on the lanes and ramps. The asphalt overlay (seen at right) is being applied in 1.5-inch lifts to lessen the drop off on the uneven lanes. The overall project is scheduled to be completed in mid-November 2016.



Enforcement of the reduced speed limit also continues. Numerous signs posted within the work zone highlight the 55 mph speed limit that is necessary to provide consistency throughout the work area and because of varying pavement drops between lanes.

## Rail

### State Rail Plan forums:

Public forums in Topeka and Wichita are scheduled next week to gather input for the development of the 2016 Kansas Statewide Rail Plan Update.

KDOT representatives and a team led by CDM Smith consultants will provide brief presentations about the Statewide Rail Plan Update process and solicit input and perspectives from attendees.

The update will detail freight rail transportation and existing passenger rail service as well as capture concepts for improved and potentially expanded passenger rail service.

"Public participation is key to the update and will provide for a fuller understanding of the challenges and concerns from urban and rural perspectives," said



KDOT's Freight/Rail Manager John Maddox.

The forums will take place:

**Topeka** - Tuesday, July 19 from 6:30 - 8:30 p.m.

KDOT District One office, 121 S.W. 21st Street

**Wichita** - Wednesday, July 20, from 5 - 6:30 p.m.

City Hall, 455 North Main Street

The public is invited to attend. For more information, contact Maddox at [johnm@ksdot.org](mailto:johnm@ksdot.org) or 785-296-3228.



### KTA

Columns are poured for the bridge reconstruction on northbound I-335/KTA at MM 157.

## District Six



**Improvements have begun at the U.S. 50/K-25 intersection in Lakin.**

**Reconstruction project underway in Lakin:** A project that will rebuild the intersection of U.S. 50 and K-25 in Lakin, replacing the asphalt pavement with concrete, began in late June.

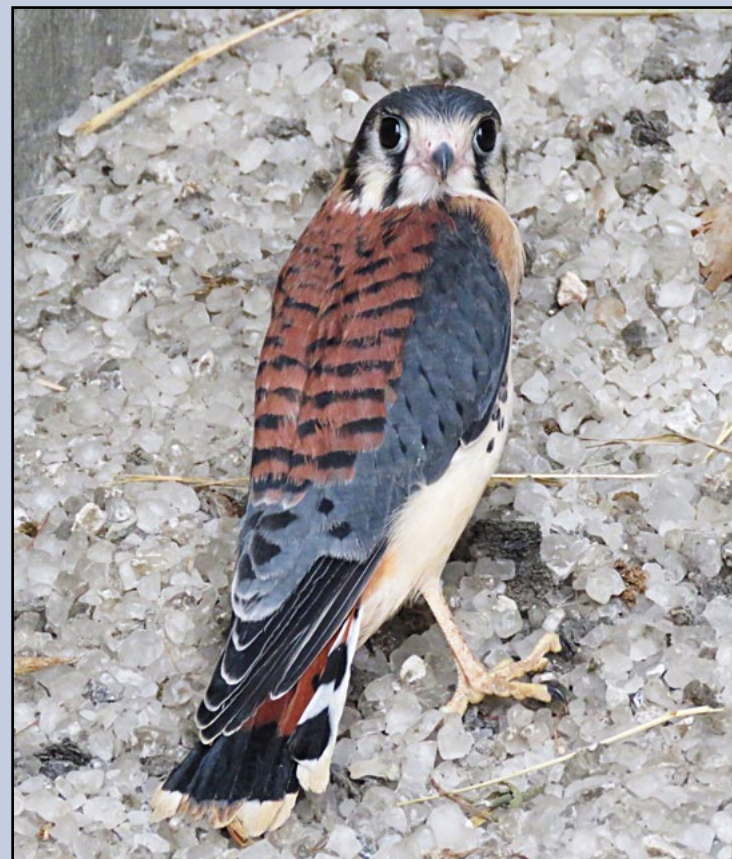
Once the intersection has been reconstructed, the contractor will do a heavy preservation project on

U.S. 50 through town, replacing the top six inches of pavement with new asphalt. Smoky Hill, LLC, of Salina is the primary contractor on this T-WORKS preservation project at a cost of \$1.8 million. KDOT expects work on this project to be completed by the end of October.

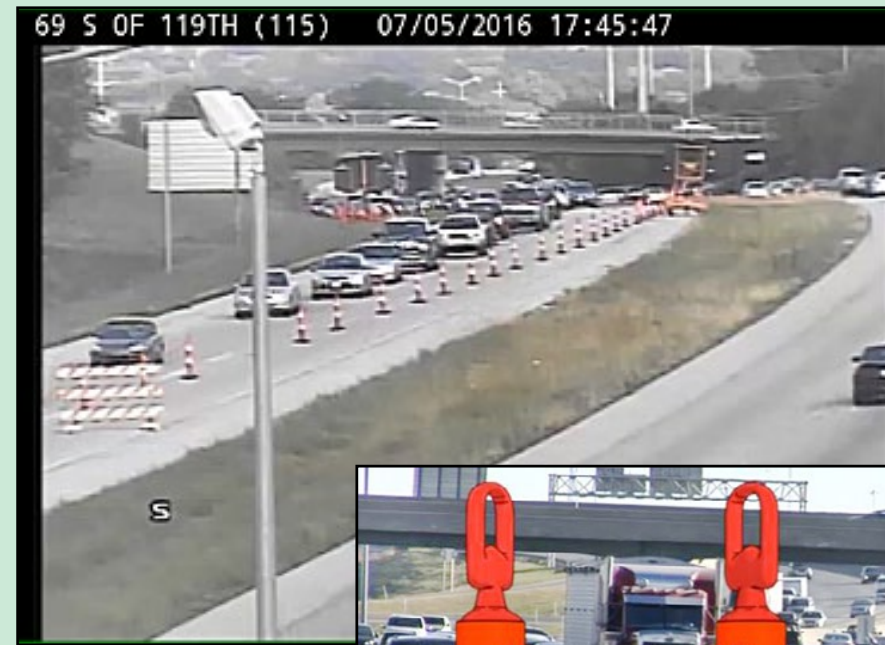
## District One



**KDOT Equipment Operator Rodney Wright noticed that a pair of American Kestrels (a falcon species) has successfully raised young the last couple years in the salt dome at Gardner. He has taken several photos of the birds this summer, including a young male sitting on the salt pile at right.**



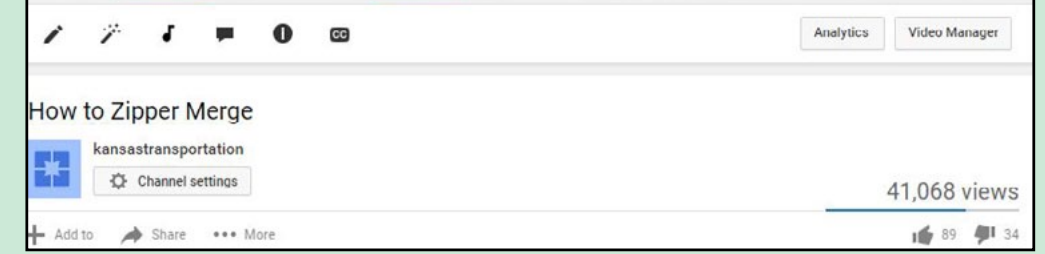
## District One



**On July 5, Kansas' first use of the "zipper" or late merge for traffic control through a work zone started on northbound U.S. 69 at the 119th Street interchange in Overland Park, as seen from a traffic camera image. In a zipper merge, drivers use both lanes of traffic up to a defined point and then take turns merging into an open lane. The procedure results in less backup and improved flow of traffic through a work zone.**



**The zipper merge video created by KDOT's Support Services staff has been viewed more than 40,000 times on YouTube, 13,000 times on Facebook and mentioned in stories from Wired to USA Today. To see the video, click [here](#).**



## KTA

**Under construction:** The Matfield Green service area along the KTA remains under renovation and includes commercial trash compactors to minimize frequency of trash service to this rural location and decrease area litter, improved restrooms that can be sectioned off to allow for easier cleaning and better truck parking for commercial travelers. Restroom accommodations and other services remain available for customers who stop at the service area. The remodel is expected to be completed by the end of the year.



**Renovations continue at the Matfield Green service area.**

## Kansas Transportation

Friday, July 1

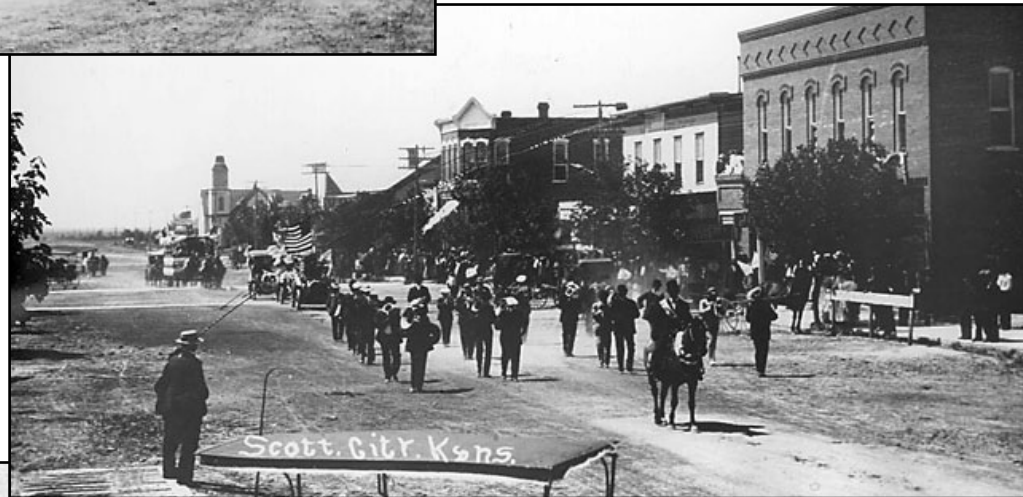
### Independence Day Celebrations of the past

With July 4 falling on a Monday this year, it makes for a nice long weekend. With that in mind, here are some pictures of Kansans enjoying the holiday from the past thanks to Kansas Memory and the Kansas Historical Society.

No matter where you choose to celebrate your holiday, please do so safely and check [kandrive.org](http://kandrive.org) before you hit the road.



*Above: From Fowler on July 4, 1908.  
Left: From the July 4 celebration in 1900 in Osage City. Below: The 1911 Independence Day parade in Scott City. Bottom: July 4, 1914, celebration in Wells.*



To see more stories on other transportation topics, check out the regular posts on the Kansas Transportation blog at <http://kansastransportation.blogspot.com/>

