

TRANSLINES EXPRESS

Dec. 6, 2023



Wildcat Construction Co. Inc. of Wichita, primary contractor on the K-177 project, hosted a ribbon cutting to celebrate the project's completion on Nov. 21. KDOT State Transportation Engineer Greg Schieber, second from right, cut the ribbon at the event. Included in the photo with him are, from left, Jeff Blosser, Wildcat Construction Superintendent; John Foster of Benesch Engineering; Joe Ausilio, KDOT Construction Engineer; Sherri Pankratz, KDOT Engineering Technician Supervisor; and Wade Heim of Benesch Engineering. Photos by Ashley Perez, District Two

K-177 reopens prior to Thanksgiving

By Ashley Perez
District Two

Cones were removed, and K-177 was reopened to traffic between Council Grove and I-70 in Morris and Geary counties prior to Thanksgiving.

Reconstruction began in March 2022 and occurred in two phases. Phase One was completed last November, and Phase Two was completed this past Nov. 22.

Improvements included widening the roadway, improved



K-177 open to traffic.

alignment, flattened hills and replacement of structures such as bridges and culverts.

Jan Sciacca, of the Council Grove Republican, said motorists were eager to see K-177 reopened after Phase One was completed. "They love being able to have shoulders and long views as a result of the road being built up and evened out," she said.

The excitement continues with the

completion of Phase Two. "We have seen videos of the improvements, but we are eager to actually experience it," she said.

Let's talk

By Secretary
Calvin Reed



I'm going to tell you a secret: I LOVE Kansas.

I love many things about Kansas, but I am particularly fond of the variety of geography across the state. One of my favorite things to do (seriously, just ask my wife) is to get off the highways and go drive down a county road I have never been on before. If you haven't taken the opportunity when traveling on I-70, I challenge you to take a side trip and see some of the beautiful scenery of western Kansas.

One of the roles I have had the pleasure to serve in while at KDOT was as Bridge Maintenance Engineer. I had the opportunity to travel to every part of the state to plan for upcoming bridge repair projects. It was not uncommon for me to suggest detours (I called them "shortcuts") on county roads to see the countryside in a new way. As you might imagine, every now and then these weren't exactly the "shortcuts" I envisioned.

Just as the geography of Kansas is diverse, so are the people. This fall, many from KDOT had the opportunity to experience this diversity by participating in our biennial Local Consult public meetings. We had over 1,400 Kansans attend the eight in-person meetings and one virtual meeting. Much of the discussion revolved around what highway improvements KDOT will be adding to our development pipeline.

There was also a tremendous amount of discussion about the different modes of transportation our agency helps support, such as rail, aviation, transit and bike/pedestrian. The conversations were amazing. We were able to gather information to help guide future decisions.

Regardless of where we were for Local Consult, several consistent themes came out of these discussions.

- 1) People appreciated that KDOT is willing to listen.
- 2) Communities recognize the importance of investment in a well-planned and well-funded transportation system.
- 3) AND, there is no shortage of need for improvements to our transportation system.

We have accomplished a lot in the first three years of the IKE program. Overwhelmingly, citizens acknowledged these improvements. We have a lot left to accomplish, and there are and will continue to be challenges. It is encouraging to know our friends, family and fellow Kansans appreciate the work we do. It takes all of us working together to keep Kansans moving.

TRANSLINES EXPRESS

**Kansas Department of
Transportation**

Eisenhower State
Office Building
700 SW Harrison
Topeka, KS

Transportation Secretary
Calvin Reed

**Deputy Secretary/State
Transportation Engineer**
Greg Schieber

**Senior Director of
Administration**
Pam Anderson

Interim Senior Director
Vanessa Lamoreaux

Chief Counsel
Gelene Savage

Communications
Steve Hale

Engineering and Design
Scott King

Field Operations
Clay Adams

IT Services
Shawn Brown

**Multimodal Transportation
and Innovation/Interim
Aviation**
Cory Davis

Planning and Development
Chris Herrick

Policy and Legislative Affairs
Joel Skelley

**Program and Project
Management**
Colby Farlow

Project Delivery
Tony Menke

Safety
Troy Whitworth

SLT has been decades in the making

By Kate Craft
District One

Seven projects secured funding in September when they were moved to the IKE Construction Pipeline. Included in the announcement was the final northern portion of the K-10/South Lawrence Trafficway (SLT), a corridor that has been on KDOT's radar for more than three decades.

Discussions about constructing the SLT began in the mid-80s, shortly after K-10 was built between Kansas City and Lawrence. At that time, the highway was aligned with 23rd Street from Iowa Street eastward, and Lawrence drivers and local streets were feeling the impacts of increased traffic.

The original Environmental Impact Statement (EIS) for the SLT was completed in 1990 with the intent to alleviate congestion on local streets by diverting traffic around Lawrence, rather than through. By 1996, the SLT's west leg, a two-lane highway connecting I-70 to U.S. 59/Iowa Street, was open to traffic.

Work on the east leg was then planned from U.S. 59 east to the existing K-10. However, the project was highly contested due to its proposed location near native wetlands and Haskell Indian Nations University. Legal mitigations, additional studies and other setbacks slowed the progress for several years. When the T-WORKS program was established in 2010, the east leg was included and identified as the No. 1 priority in the state. It was also projected to have a \$3.7 billion



Work on the South Lawrence Trafficway, like the Haskell Avenue Interchange seen above, has been taking place for nearly 40 years. Projects on the final northern portions of the SLT were moved into the IKE Construction Pipeline in September. File photo

economic impact – the highest of any T-WORKS project.

The \$140 million, four-laned east leg finally opened in 2016 – but SLT wasn't complete yet. A lot had changed since the original EIS – local development, traffic volumes, safety needs, etc. – and work to upgrade the existing West Leg was already underway.

In 2022, expansion of the original corridor was approved as two projects: the South Project, from U.S. 40/Sixth Street south to U.S. 59, and the North Project, from U.S. 40 north to I-70. Both projects have now secured funding and will expand K-10 to four lanes, reconstruct the I-70 and 27th Street/Wakarusa interchanges and bring other improvements to the corridor. Work is scheduled to begin in 2024 and 2025, respectively, and should be complete by 2028.

Nearly 40 years after initial planning began, there is a light at the end of the trafficway.

Employee spotlight: Brian Link, Olathe Area Office

What's your job title?

District One, Area Two, Highway Maintenance Supervisor.

What sort of duties do you have at work?

I oversee the area crew so we can support the subareas in their day-to-day operations. I do a lot of ordering for signs, guardrail and attenuator parts and other supplies. During snow and ice removal, we have two tow plows in our Olathe shop, and I run one during the night shift.

What kind of music do you like?

Christian rock, 80s hair bands.

What's the most exciting part of your job?

Probably snow removal!

What's something you're proud of?

Our ability to support the subareas when they ask for help.

What's your favorite food?

BBQ – especially BBQ ribs.

What's your favorite movie?

I like action movies.

Do you have any hidden talents or hobbies?

I'm a pretty good cook in general. I like making BBQ ribs and baking desserts and bread.



Brian Link and his wife, Tina.

Do you have any pets?

Yes, two cats, Curry and Salem.

Are you a sports fan? Who are your favorite teams?

Yes – the KC Chiefs and the Missouri Tigers.

Are you a morning person or a night owl?

Definitely a night owl.

Are you a coffee, tea or pop person?

Coffee – black.

What's something you enjoy at your job?

I enjoy the flexibility of the schedule and how Drake Jennings manages our team to set goals and achieve them.

What's your favorite season?

Spring. Fall is a close second.

What three items would you take with you to a deserted island?

Beer, bourbon and a good cigar – I don't want to be the Castaway guy and need Mr. Wilson!

GETTING TO KNOW

OUR KDOT CO-WORKERS

Featuring an employee each month from different offices throughout KDOT.

New look for Translines

Beginning with the January edition, Translines will have a new look and also contain more information focusing on each district.

Please continue to send district photos and information to each district Public Affairs Manager, and send photos and information directed to Headquarters to Kim Stich.

Any questions, please let us know. Have a safe and happy holiday season!



District Three Maintenance Engineer Mathew Withington (top right) gives an update on KDOT snow and ice operations during the pre-winter meeting in Hays. The meetings were started as a way for District Three and its local partners to identify best practices for winter weather events and road closures. Photo by Lisa Mussman, District Three

Meetings help prepare KDOT, partners for winter

By Lisa Mussman
District Three

District Three hosted two regional meetings on Nov. 29, bringing together representatives from local law enforcement agencies, emergency management, city administrators and the Kansas Highway Patrol to discuss preparations for the upcoming snow and ice season.

The meetings have been held annually in Hays and Colby for the past several years so each agency can share updates and ideas on working together during extreme weather or other events that may cause road closures.

“There’s a lot of behind-the-scenes work that goes into closing and reopening roads, especially I-70,” said District Maintenance Engineer Mathew Withington. “We definitely need a good working relationship with all agencies involved, everyone from emergency

management to law enforcement. These meetings help us put faces to names and share information, which helps make the closing and reopening processes a lot smoother.”

KDOT updates included information on the new snow gates being installed on eastbound I-70 and staffing shortages. Statewide, KDOT is about 25% short of its preferred number of snowplow operators, and District Three is also challenged with a shortage in construction employees who are also utilized for SNICE operations. Withington said operators will be shifted around during storms to assist in areas needing extra staff.

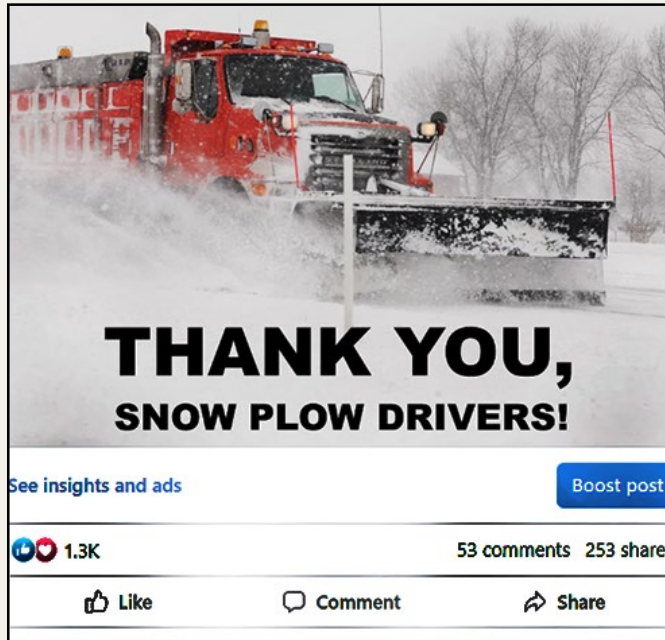
Capt. Travis Phillips of the KHP also provided staffing and safety updates and applauded the working relationship among the agencies.

“The partnerships we have out here are something unique I haven’t seen in any other parts of the state,” Phillips said. “We work together on the same team, towards the same goals, and that makes all of our jobs easier.”

Trivia!

Unique attractions in Kansas – Part 1

1. A replica of the Liberty Bell made out of turkey red wheat straw can be found here.
2. Where can you find the British Invasion Mural featuring the Beatles?
3. The Gearhead Curios, which is along Route 66 in Galena, features a variety of items such as an American flag made of old Kansas license plates and a Big Boy statue. They also have two things associated with the 2006 movie "Cars." What are they?
4. The geographic center of the 48 contiguous states is in Kansas – where is it?
5. Where can you see numerous black squirrel statues that are nearly 6 feet tall.
6. The Sallie House is this town's most famous haunted house, and it's available for both daytime and night visits.



Job well done

The public showed appreciation on several KDOT social media posts (left – south central Kansas) for KDOT highway workers' efforts over the Thanksgiving weekend. This post received more than 1,300 likes. Below, Garden City Subarea crew members load salt and sand while treating highways during the holiday weekend storm. Photo by Enzo Ruiz-Hernandez, District Six



Trivia answers

1. At the Mennonite Heritage Museum in Goessel. It was created to be hung in the Smithsonian during the 1976 U.S. Bicentennial.
2. In Newton, on the south edge of downtown.
3. A replica of the 1951 Doc Hudson car and a tow truck that resembles Mater.
4. About three miles north and one mile west of Lebanon.
5. Throughout the city of Marysville.
6. Atchison.

Kudos

Email -

♦I simply would like to thank the KDOT team for all of your recent work in conservation. I am an Ecology & Evolutionary Biology student at KU and I am employed as a Kansas Natural Resource Officer. I am assigned to Douglas County. I have noticed, especially in Douglas and Franklin counties, the native prairie restoration along the shoulders of some of our KDOT highways.

I am extremely appreciative of this initiative! I have been wishing for this kind of project for years, and the KDOT team is making dreams come true for many conservationists.

When I first noticed the native flora along Highway 59, this summer, I was struck by its beauty. Your restorative efforts along our highway systems brings back a piece



KDOT file photo from the Homewood Rest Area.

of natural beauty, necessary habitat for native fauna, and a much more efficient and cost-effective use of space.

This is only a start, but every little bit of conservation is a great thing. Again, I recognize and truly appreciate the restorative efforts of KDOT's current administration. I am sure I can speak for many others who feel the same way.

Thanks for all that you are doing, and I hope to see this initiative continue to expand. I wish you all the best.

Phone call -

♦A resident called the Headquarters Construction and Materials office recently. He explained that there was an issue with his driveway and where it connected to K-4.

The Area Four office was alerted about the problem.

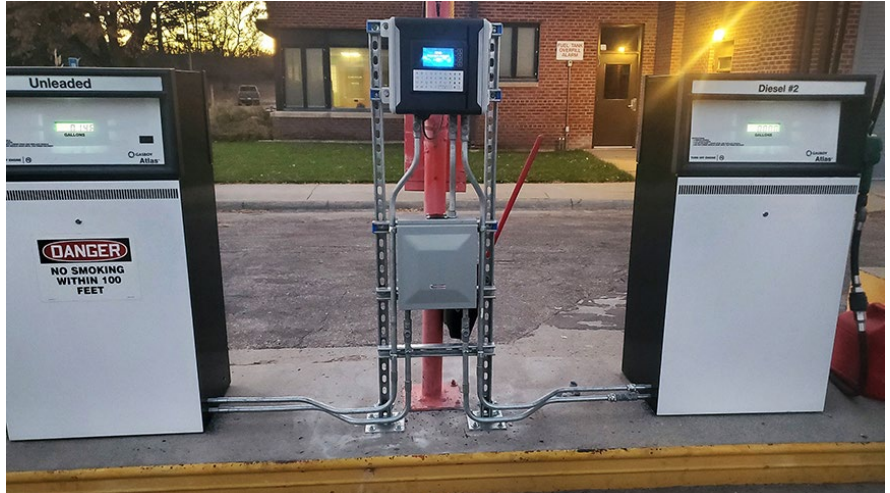
He called to say thank you to the KDOT maintenance crew, and especially Area Superintendent David Studebaker, who fixed the driveway. He appreciated the work and wanted to pass along his gratitude to everyone.



At right, Kodi McDaniel, KDOT Equipment Operator at Salina, discussed winter driving safety tips and how to properly share the road with a snow plow during a four-day winter driving education course for students at Ell-Saline Middle/High School in Brookville. Tyler Casteel, Deputy with the Saline County Sheriff's office, partnered with KDOT and Saline County on the training in late November to educate new drivers on the importance of safely sharing the road with large pieces of equipment and what to expect while driving in the winter. Photos by Ashley Perez, District Two

Educating future drivers on safe winter driving skills





The Atlas Prime version of Gasboy (left) is integrated into the fuel pump and will require a new pump with the reader when installed. The Site Prime version of Gasboy (right) is a reader only. Photos by Tim Cunningham, Headquarters

New automated fueling locations going statewide

By Tracy Statton
District Five

A new automated fueling system is coming to all KDOT fueling stations.

Gasboy key readers will be installed throughout the state in the next few months. The fleet management system utilizes an electronic system to distribute the fuel and record the amount.

“Fueling will be more secure, with the accuracy of the data being better,” said Tim Cunningham, KDOT Equipment Engineer. “The fueling information will also be timelier and will not rely on anyone to scan the sheet or enter it into the mainframe.”

Cunningham says the new system is easy to use. Key fobs will be issued for all equipment. The operator will hold the key up to the screen on the reader. Once it is recognized, the operator will follow the directions and enter the requested information. Then the fuel pump is ready to go.

Another advantage will be that the fobs can be used to get fuel at any KDOT location.

“Many other agencies utilize KDOT for fueling their vehicles. Mostly that is done at our unleaded locations, and this will give those agencies additional sites that they can obtain their fuel,” Cunningham said. This saves the state money by allowing these agencies to obtain less expensive fuel than they can get commercially, he said.

The price of the new equipment ranges from \$20,000 to \$40,000.

“Several of the locations in the state are being completely upgraded to new tanks and/or new locations. Those sites can cost over \$100,000,” Cunningham said.

Two different styles will be utilized throughout the state: the Atlas Prime and the Site Prime. The Atlas Prime is integrated into the fuel pump – areas with this style will be receiving a new pump with the reader. The Site Prime is a reader only.

There are 90 locations statewide getting upgraded – 59 will have the Site Prime, and 31 will have the Atlas Prime readers.

A contractor has been hired and will be installing the new equipment over the next couple of months.

Buyers and sellers: Always be aware

By Troy Whitworth
Director of Safety

The internet can bring people together, where you can connect with family and friends. It also has areas where people can buy, sell or trade items, which can be really nice or a nightmare.

An example of this involves a family I know who wanted to sell a scooter used for improving an adult's mobility.

The person no longer needed it, so they posted it on Facebook Marketplace. Several people were immediately interested in purchasing it. The first person offered to buy the scooter with little haggling.

The interested person said they wanted it for their father, who had been in the hospital and had limited mobility. The buyer lived out of state and offered to send a cashier's check, and they said a shipping company would pick up the scooter. The seller had heard stories about people being scammed, so the seller told the buyer the check had to be in the bank before shipment. At that point, the seller was thinking, "Boy, these folks are sure trusting; I sure don't know how this could be a scam."

The buyer sent a tracking number for the cashier's check when it was mailed. Everything seemed on the level at this point. When the check showed up a few days later, it was for \$2,000 more than the purchase price of the scooter. The buyer told the seller that the extra money was to cover the scooter's shipping cost. The seller thought this was odd. The buyer told the

seller that he had been sick and thought it might be easier to have the seller pay the shipper directly. Again, the seller thought, how could this be a scam.

The seller needed a money order to pay the shipping company, so off to the store they went. While there, the story about the sale and what the money was needed for came out. At that moment, the person behind the counter dropped a bombshell and said, "Don't do this - it's a scam. This is how the scam works. You will send the money overnight to the supposed shipper. The

cashier's check they sent you will not clear the bank. It takes around a week to find out that the check won't clear the bank. By then, you will be out the money you sent to the fraudulent shipper."

This sale seemed too good to be true, and come to find out, it was. The seller had tried to anticipate any potential fraud, but

the scammers had thought of almost everything. They always had an answer when questions came up. It all seemed reasonable. But as we consider this story, why would someone pay more for shipping than the asking price of the scooter?

Be alert for phishing scams in any situation you're dealing with someone you don't know. Check with your bank's fraud department or with the Consumer Protection Division in the Kansas Attorney General's office on the best processes and what limited information should be given out. Remember, if something seems too good to be true, it probably is. For Your Family and Mine.



U.S. 169 now expected to reopen in December

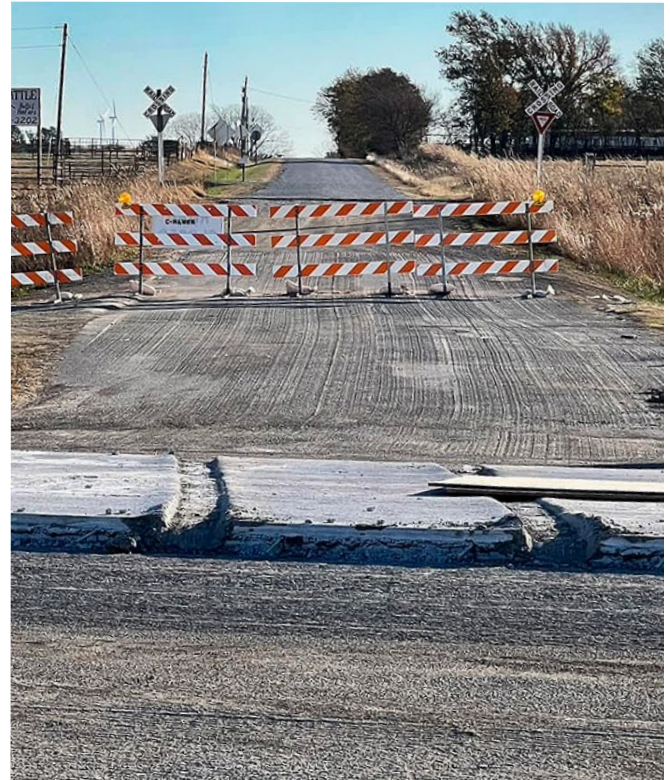
By Priscilla Petersen
District Four

Clarkson Construction Co., the primary contractor for the U.S. 169 project, now plans to reopen the highway from Thayer south to U.S. 400 to unrestricted traffic in mid-December. The opening was originally set for the end of October.

Several drivers have gone around project barricades and left deep wheel ruts in freshly poured concrete pavement.

“KDOT wants to reinforce the need for the traveling public to abide by the installed traffic control devices,” said District Engineer Darrin Petrowsky. “Driving on uncured concrete will cause damage to the new pavement. The contractor will then have to remove the damaged section and replace it. We have already experienced this type of damage because drivers disregarded our traffic control devices, which has contributed to the delay in reopening U.S. 169.”

KDOT closed this 7-mile section in mid-July to construct passing lanes and replace the pavement.



In the top photo, a driver left wheel ruts in freshly poured concrete at a side road intersection. In the photo at right, another driver crashed into barricades on the south of the U.S. 169 passing lane project south of Thayer, destroying them. Photos submitted

In memory

Condolences to the family and friends of KDOT retiree **Larry Foster**, who passed away on Nov. 9 in Iola. Foster started at KDOT in 1989 and worked as an Equipment Operator Senior for more than 18 years in the Iola office. He retired in 2007.

Condolences to the family and friends of KDOT retiree **Russell Ash**, who passed away on Nov. 10. He was from Topeka. Ash started in 1971 and served for more than 42 years as an Attorney II in the Chief Counsel’s office. He retired in 2013.

Condolences to the family and friends of KDOT retiree **O’Neal “Sonny” Smith Jr.**, of Chanute, who passed away on Nov. 12. Smith started in 1968 at KDOT and worked for more than 43 years. He retired from the Erie Subarea in 2011 as an Equipment Operator.

Condolences to the family and friends of KDOT retiree **Edward Burdick**, who passed away on Nov. 19 in Topeka. Burdick started in 1980 at KDOT. He worked for more than 42 years, retiring in 2022 as an Engineering Technician Specialist in the Bureau of Structures and Geotechnical Services.



From left, representatives from the City of Baldwin City as well as Atchinson and Pottawatomie counties joined Governor Laura Kelly and Secretary Calvin Reed for the fall 2023 Cost Share award recipients announcement on Nov. 28 in Topeka. Photo by KDOT Multimedia Services

Governor announces over \$12M for Cost Share projects

Governor Laura Kelly and Secretary Calvin Reed announced more than \$12 million in state funds will be awarded to 16 transportation construction projects across Kansas through KDOT’s Cost Share Program for fall 2023. This investment will leverage \$7.2 million in community matching dollars for a total investment of over \$19 million.

“No one can better pinpoint a community’s transportation needs than the people who actually live and work there,” Governor Kelly said. “That’s why we’ve

partnered with local communities to invest a total of \$19 million in projects that will improve safety, support job retention, relieve congestion and make it easier to travel across the state.”

Secretary Reed noted the Cost Share program has invested nearly \$140 million in state funding toward 165 projects since the program was founded in the fall of 2019. An additional \$100 million in matching local funds has been contributed. For more details and all selected projects, click [HERE](#).

Holiday art walk



People in the Eisenhower building check out a variety of art created by KDOT employees that was on display at an art walk sponsored by the Employees’ Council on Nov. 29. Photo by KDOT Multimedia Services



KDOT Special Projects Manager David Seitz starts the presentation at the second public meeting on the K-254 Corridor Management Plan. Photo by Tim Potter, District Five

KDOT seeks new input on K-254 Corridor Management Plan

By Tim Potter
District Five

More than 100 people attended a second public meeting on the K-254 Corridor Management Plan to give input on potential short-term and long-term changes to the highway.

At the meeting, held the evening of Nov. 8 at Circle Middle School in Benton, attendees heard a presentation on possible improvements to enhance traffic safety and economic development on the 22-mile K-254 corridor. The attendees got to ask the team questions, and the team encouraged them to view enlarged maps of the corridor and attach their comments.

The corridor stretches from Wichita on the west to El Dorado on the east, in Sedgwick and Butler counties, and within a mile of the highway.

The second public meeting brought forward potential improvements derived from the latest traffic-volume and market analysis and feedback from the first public

meeting on the corridor plan. KDOT hosted the first meeting this past summer, also at the Benton school. The team expects to hold a third meeting in early 2024. The plan is expected to be finalized around the summer of 2024.

Ultimate improvements – or long-term changes – could include replacing at-grade intersections with interchanges or overpasses. Interim improvements – which could happen much sooner – could include lower-cost changes such as lighting and pavement markings at intersections along K-254.

The public meetings are just part of the outreach to the corridor community and those who use K-254. The KDOT/consultant team has been engaging with stakeholders including local governments, businesses and organizations. The team has also been holding pop-up meetings at various venues, so far including a local school and college – seeking input from young people who travel the highway.

Information about the corridor plan is available to the public at ike.ksdot.gov/k-254-corridor.

Expansion projects focus of November meetings

By Yazmin Moreno
District Six

KDOT hosted two public involvement meetings in November, one for Seward County and the other for Finney and Gray counties, to discuss expansion projects in the region.

On Nov. 14, residents of Liberal gathered to learn about U.S. 54 expansion and the reconfiguration of the U.S. 54/U.S. 83 intersection. Attendees expressed concerns and ideas regarding traffic flow, safety, environmental impact and access to businesses.

KDOT officials then hosted a public involvement meeting on Nov. 16 to discuss the expansion of U.S. 50/400 from Finney County to Gray County. Attendees expressed concerns about how the expansion would impact daily commutes and access to communities and local businesses. Others were interested in the potential

for improved safety and reduced road congestion.

Both meetings allowed community members and officials to come together to discuss projects that will impact the area and help shape the future of the region's transportation infrastructure.



Meetings in southwest Kansas in November focus on expansion on U.S. 54 (above) and on U.S. 50 (below). Photos by Yazmin Moreno, District Six



State offices will be closed for the holidays on Monday, Dec. 25, and on Monday, Jan. 1.
Have a safe and Merry Christmas!

Don't forget to use your 2023 Discretionary Day by Friday, Dec. 22.

KTA briefs

- ♦The KTA released its Annual Report for fiscal year 2023 [HERE](#) and annual Customer Satisfaction Survey results [HERE](#). The report provides an overview of the organization, and the survey showed favorable results. For more details, click [HERE](#).
- ♦Love's Travel Stops provides fuel options as well as charging stations for electric vehicles at five service areas along the Turnpike. Locations include Belle Plaine (MM 26, I-35/KTA), Towanda (MM 65, I-35/KTA), Matfield Green (MM 97, I-35/KTA), Topeka (MM189, I-70) and Lawrence (MM 209, I-70/KTA).
- ♦KTA recognized 51 employees and Kansas Highway Patrol troopers assigned to the Turnpike who celebrated service anniversaries in 2023. These employees collectively have 790 years of service. Click [HERE](#) for the release.
- ♦In preparation for increased holiday traffic, view the November Construction Report [HERE](#) to see KTA's construction projects that are still ongoing, been completed or have paused until next spring.
- ♦For monthly construction updates delivered directly to your inbox, sign up for Construction News [HERE](#).



Above, a charging station area can be seen at one of the Love's Travel Stops along the Kansas Turnpike seen below. Photos by the KTA



Hey KDOT Family!

Have you simplified work processes, improved team efficiency or resolved any problems resulting in positive outcomes? If so, click the link below to complete the form.



Let's Work TOGETHER!

Click [HERE](#) to share your story.

YOUR Input = Our Success

Thank you for your service

Milestones

KDOT employees celebrating state service anniversaries in December.

35 years

Kenneth Cohen, Highway Maintenance Supervisor, Junction City

Julie DeDonder, Applications Developer III, St. Marys

30 years

Lori Mello, Accountant I, Topeka

Scott Swanson, Public Service Executive I, Lawrence

25 years

Brenda Abney-Gonzalez, Administrative Specialist, Topeka

Linda Althof, Printing Service Coordinator, Topeka

Penne Wege, ROW Property Appraiser Supervisor, Ozawie

20 years

Shane Thurmon, Highway Maintenance Supervisor, Emporia

15 years

Adam Fernsler, Management Analyst I, Bel Aire

Tom Reaves, Equipment Operator Senior, Chanute

Jacob Sawatzky, Equipment Mechanic, Topeka

Steven Simpson, Equipment Shop Supervisor, Denison

Neisha Vetter, Acting Construction Manager, Hutchinson

10 years

Bruce Arnhold, Equipment Operator Senior, Hays

Aaron Hailey, Equipment Operator Senior, Bucklin

Gary Herman, Public Service Executive II, Topeka

Ruben Hernandez, Equipment Operator Senior, Kansas City

Amy Sims-Shonka, Program Consultant II, Topeka

Kollean Stewart, Human Resource Professional II, Norton

Retirees

The following employees will retire on Jan. 1.

Headquarters

Cheryl Keil, Engineering Technician Senior, Transportation Planning

Kerry McDonald, Engineering Technician Senior, Construction & Materials

Joel Ramsdell, Engineering Technician Senior, Research

Alan Spicer, Assistant Bureau Chief, Transportation Planning

District One

Donald Gibbs, Highway Maintenance Supervisor, Marysville

District Three

Randall Balluch, Equipment Operator Senior, Wakeeney

James Ehrlich, Equipment Operator Senior, Russell

Douglas Hecker, Highway Maintenance Supervisor, Russell

District Four

Lonnie "Joe" Engle, Highway Maintenance Supervisor, Pittsburg

District Five

Thomas Hein, Public Affairs Manager, Wichita

The following employee retired on Dec. 1.

District One

Harry Coker, Engineering Technician, Topeka

The following employee retired on Nov. 1.

District Five

Thomas Berens, Equipment Operator, El Dorado

KDOT Employee Council Holiday Ornament Order Form

Year	Quantity	Cost	Total
2023		\$6	
2020		\$3	
2019		\$3	
2015		\$3	
2013		\$3	
Total enclosed			

2023



Great Gift Ideas!

Please Print -

Name: _____

Work address: _____

(Retirees only - home address)

Best phone: _____

How to Order:

HQ - email/call Jennifer to make arrangements.

Districts/Retirees - Mail form to -
Jennifer Meyer, ESOB/6th Floor,
700 SW Harrison, Topeka, KS 66603

Make checks payable to
KDOT Employee Council

For more details, contact
Jennifer: (785) 296-3661 or
Jennifer.Meyer@ks.gov

A few past ornaments are still available

2020



2019



2015



2013



From the Land of Kansas

Holiday Gift Box

Holiday gift boxes are now available to order for the 2023 holiday season from the From the Land of Kansas state trademark program at the Kansas Department of Agriculture.

Each box contains an assortment of products grown,

raised or produced in Kansas, with two size options available: the Konza Box and the Ad Astra Box.

From the Land of Kansas gift boxes allow for ease of purchase for family, friends or clients and add a personal, customized note for the holiday season.



See all the items included in the gift boxes at shop.fromthelandofkansas.com/from-the-land-of-kansas-gift-box. Orders can also be placed at this link, and the boxes can be shipped anywhere in the United States.

For orders larger than 10, call 785-564-6759 or email fromthelandofkansas@ks.gov to ensure holiday delivery.

Dec. 9 is the last day to order for guaranteed delivery before Christmas.

The From the Land of Kansas trademark program at KDA is designed to promote and celebrate agricultural experiences and products grown, raised or produced in Kansas. For more information about the holiday gift boxes or about the program, visit www.fromthelandofkansas.com.