

TRANSLINES EXPRESS

Dec. 8, 2021

Staffing shortages could impact KDOT winter operations

KDOT is committed to keeping the highways cleared whenever inclement weather impacts the state.

In line with workforce shortages across the nation, KDOT does not have enough equipment operators – the agency’s primary snowplow operators – in a number of areas across Kansas. These shortages create the potential for highways to not be cleared of snow and ice as quickly as in the past.

The agency has dealt with reduced staffing in the past, but the shortages are greater this year. KDOT is about 30% short of snowplow operators needed to be fully staffed in offices across the state.

“KDOT is facing significant staffing shortages in some areas and will work proactively to clear Kansas highways by shifting crews to affected areas and pretreating highways and bridges whenever possible,” said Secretary Julie Lorenz. “Our snowplow operators work 12-hour shifts and do their best to keep the roads open and the public moving.”

To help address the shortage, the agency will deploy all employees who have a Commercial Driver’s License (CDL) to plow snow and hire seasonal employees. For people interested in working at KDOT, go to the state’s employment website at <http://jobs.ks.gov/>. KDOT will assist selected applicants in obtaining a CDL upon



Workforce shortages could impact KDOT’s efforts to clear snow and ice this winter. File photo

hiring, including paying for training.

“We want motorists to understand why it could take longer this season to clear highways during storms,” said Secretary Lorenz. “Knowing this allows motorists to plan ahead, alter or even delay travel plans, which in turn helps them stay safe.”

Motorists can check www.KanDrive.org, KDOT’s road/weather condition website, before traveling. It is updated 24/7 for highway conditions, overall weather information, short-term closures and general alerts.



State offices are closed for the holidays on Friday, Dec. 24. State offices will also be closed on Friday, Dec. 31, for New Year’s Day. ***Have a safe and Merry Christmas!***



Work is wrapping up on U.S. 50 in Lyon County. Photo by Dustin Hardin, District One

U.S. 50 T-WORKS project nearly complete

By Kate Craft
District One

The U.S. 50 expansion project in Lyon County is nearly complete, wrapping up one of the two remaining delayed T-WORKS projects in District One. Located just west of Emporia’s city limits, the mile-long project widened the highway to a four-lane expressway, extended passing lanes and made other improvements to an area that carried the most truck traffic of any two-lane highway in the state.

Extension of the corridor was scheduled for construction in 2011 under T-WORKS but had been delayed since 2016 due to funding limitations. Thanks to the IKE Program, the long-awaited project finally broke ground last summer. Original plans had called for a two-mile long expressway, but local officials and KDOT used public input to select a combination of the most requested, mutually beneficial and cost-effective designs.

Overlay on a bridge may have to wait until spring, but traffic should be normalized by the end of December. Koss Construction of Topeka is the prime contractor on the \$7.8 million project. Steve Rockers’ road squad and Shawn Schwensen’s bridge squad designed the project.

Upon completion of U.S. 50, the 6.5-mile realignment of K-31 in Osage County will be the district’s last remaining T-WORKS project. It’s expected to be finished in December 2022.

TRANSLINES EXPRESS

Published by the
Kansas Department of Transportation

Office of the Secretary
Eisenhower State
Office Building
700 SW Harrison
Topeka, KS

Transportation Secretary
Julie Lorenz

Deputy Secretary
Burt Morey
Maggie Doll
Lindsey Douglas

Administration
Allison Sedore

Aviation
Bob Brock

Communications
Steve Hale

Engineering and Design
Calvin Reed

Field Operations
Clay Adams

Fiscal & Asset Management
Ben Cleeves

Innovative Technologies
Mike Floberg

Planning & Development
Chris Herrick

Policy
Joel Skelley

Interim Program & Project Management
Pete Van Sickle

Project Delivery
Greg Schieber

Safety
Troy Whitworth



Governor Laura Kelly and Deputy Secretary Lindsey Douglas listen to Secretary Julie Lorenz speak at the Cost Share event.

Governor announces Cost Share projects

Governor Laura Kelly and Secretary Julie Lorenz announced KDOT's Cost Share Program recipients in Linwood on Nov. 14.

"These 20 new Cost Share projects will repair and modernize transportation infrastructure in communities across Kansas," Governor Kelly said. "I want to congratulate all of the communities that were awarded projects and thank them for their collaboration in this program. My administration is committed to fixing and maintaining our roads and bridges in every corner of the state."

In total, \$9.4 million will support 20 transportation construction projects funded through state and local partnerships that improve safety, support job retention and growth, improve access or mobility and relieve congestion. The projects are listed [HERE](#).

"With today's announcement, KDOT has selected more than 100 Cost Share projects since the program began in 2019," Secretary Lorenz said. "That means in two short years, we've moved almost \$97 million out the door along with \$68 million in additional local funds. That's a significant investment in Kansas taxpayer dollars to solve Kansas' transportation needs that otherwise couldn't be addressed."

District Four projects continue



Work on a major I-35 resurfacing project was completed this autumn. A one-inch reflective crack interlayer with a three-inch asphalt overlay was placed on I-35 between mile markers 179-191 in Franklin County. The resurfacing replaced failing pavement on this section. Bettis Asphalt & Construction was awarded the \$12.4 million construction contract. Steve Rockers' road squad designed the project. Photo by Donna Schmit, District Four



KDOT is replacing the Neosho River drainage bridge on U.S. 160 east of Oswego. Traffic has been placed on a temporary road around the work zone. B & B Bridge is the primary contractor on the \$1.9 million project. Jeff Sims' road squad and Shawn Schwensen's bridge squad designed the project. Photo by Priscilla Petersen, District Four



RCI used on U.S. 54/400 project in Butler County

By Tim Potter
District Five

The everyday traveler can't see what all is in the new pavement on U.S. 54/400 east of Augusta.

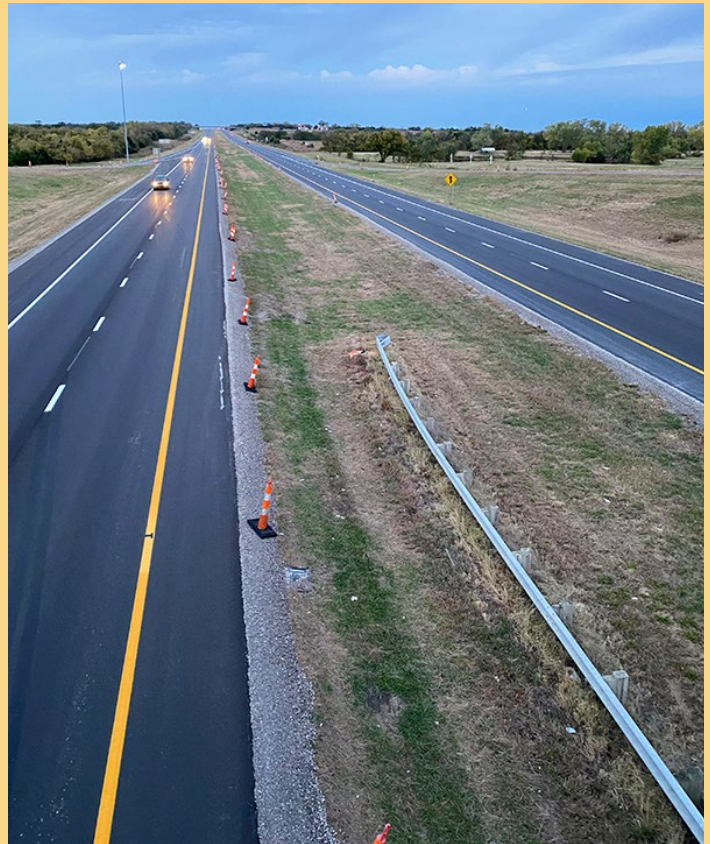
The project there is finishing. It's a \$10.7 million concrete patching and asphalt overlay from the Augusta east city limits to east of the junction of U.S 54/77/400. The full project is 8.15 miles long. District Five Construction and Materials Engineer Nick Squires calls it a "very heavy rehab" job, including a 3-inch overlay and extensive shoulder patching.

But there's an extra component beyond the typical asphalt. In three words it's this: reflective crack interlayer – RCI.

What is RCI? As Squires describes it, "It's a super flexible layer of asphalt that helps slow cracks from coming up" from below. The RCI layer sits atop the concrete, below the asphalt.

In the U.S. 54/400 project, the RCI layer has been placed on the westbound and eastbound lanes. On a 6.5-mile section of westbound lanes, the same oil used to make the RCI was mixed into the asphalt. The idea is that the addition of the RCI oil in the asphalt – atop the RCI layer – will prolong the time it takes cracks to reflect up through the new asphalt -- longer than with just the RCI layer alone. KDOT will be able to compare how the westbound lanes -- with the RCI oil added – fare compared with the eastbound lanes without the added oil.

RCI can be a good tool in areas where concrete is



*A section of the new work on U.S. 54/400 east of Augusta.
Photo provided*

being overlaid by asphalt and where traffic is heavy, Squires said. Like that key highway east of Augusta.

APAC-Kansas Inc., of Hutchinson, is the main contractor for the \$10.8 million project. Jeff Sims' road squad designed the project.

Kudos

Hello!

We have traveled from SW Missouri up to KC Kansas often on Hwy 69 since our son moved there ten years ago. We stop at the rest area... Junction of Hwy 52 and Hwy 69... almost every time. We appreciate the top notch rest area that it is and being farmers

understand the hard work of keeping it that way. Please, commend the caretaker of the rest area for doing a job well done.

Thank you for your time.
Frank S. Johnson



As the days get shorter, many construction workers begin their day in the midst of a beautiful sunrise on the U.S. 24 bridge over Mulberry Creek in north central Kansas. Photo by CJ McChesney, Schwab Eaton

Bridge work progresses

1 and 2. Workers pour concrete on the U.S. 24 bridge in Mitchell County over Mulberry Creek in mid-November. Photos by Ashley Perez and Jean Istas, District Two

3. Beams are set in place on the bridge replacement over Brown's Creek on U.S. 24 about 4 miles west of Beloit. Both bridge projects are expected to be completed in the spring 2022. Kris Norton's road squad and Paul Kulseth's bridge squad designed both projects. Photo by Doug Newquist, District Two



Winter weather travel preparations for your family

By Tracy Crockett
District Five

SNICE season is here. While KDOT is prepared, are you and your family ready?

According to KDOT data, there were a total of 17,935 crashes involving snow and ice in Kansas from 2016-2020. Of those, 81 people were killed and 3,870 people were injured.

Preparing yourself and your vehicle is key. Here are some easy tips to prepare your vehicle.

Check tires

As the temperature drops, tire pressure changes. Check your car manual or the label on the driver's side door for the suggested pressure for your vehicle. Inspect your tires at least once a month. Look for wear and tear, measure the pressure and check the age of your tire. And don't forget your spare tire.

Check windshield wipers

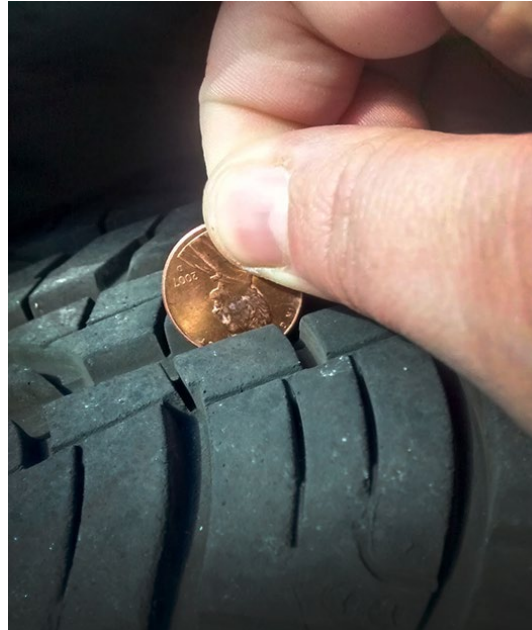
Make sure your windshield wiper fluid is full and ready to go. Changing to a winter formula can help melt ice and frost. Check your blades. If worn, replace them. Check your defroster and make sure it's working properly.

Check battery

Battery power drops when the temperature drops, taking more power to start. Inspect your battery, charging system and belts.

Check cooling system

Look over your cooling system for leaks, test and drain



Checking tire tread and fluid levels is important to keep a vehicle in good condition. Photos provided



or replace old coolant. Make sure you have enough coolant according to the manual.

Check lights

Ensure all your lights are working properly. Check your headlights, brake lights, turn signals, emergency flashers and interior lights.

Maintain fuel levels

Keep your gas tank full or half full to prevent gas line freezing.

Check supplies

Make sure your ice scraper is still in your vehicle. It's also a good idea to carry a blanket, flashlight, phone charger, jumper cables, flares, snow shovel, broom and sand or kitty litter in case your car gets stuck.

Car seat checks

Some other ways to keep your family safe during the winter months include checking car seats and reviewing car seat safety. The NHTSA says car crashes are the leading cause of death for children ages one to 13. That's why it's so important to make sure your children are in the right seat correctly. Heavy coats can interfere with the way the harness fits on a child in a car seat. One way to help secure your child in their car seat is to pick thin, warm layers and place a blanket or coat over them after the harness is snug and secure.

For more information on road safety, go to www.nhtsa.gov.

I-35 project increases access to Logistics Park Kansas City

By Delaney Tholen
District One

Four miles north of the Johnson County-Miami County line, a widened bridge provides increased access to one of the largest logistics parks in the United States.

This recently completed bridge at I-35 and 199th Street is significant for both infrastructure and economic opportunity

in Kansas - Logistics Park Kansas City is close by. Located in Edgerton, the modern logistics hub provides domestic and international intermodal service, direct-rail service and storage and distribution in a 1,700-acre master-planned area.

Beneath the 199th Street bridge runs I-35, a critical transportation corridor for local and through traffic. On average, more than 30,000 vehicles travel this segment daily. For the duration of the \$7.2 million project, I-35 required a significant full roadway closure beneath the bridge only once, for a 24-hour period during demolition.

"The updated bridge has an alignment that keeps 199th Street oriented east and west without swinging right and left on each end, as it did on the previous structure," said Mike Rinehart, Olathe Metro Engineer. "The new footprint allows for improved functionality and enhanced safety once completed."

The bridge replacement project began in July 2020 to address a narrow and deteriorated bridge and started with right-of-way acquisition and preliminary site work. This was followed by demolition of the existing bridge in February. Next, permanent and temporary concrete



Above, demolition required full closure of I-35 for less than 24 hours. Below, girders are set over piers. Photos by Ali Al Inizi, District One



piers were constructed to set girders on before the bridge erection. The bridge pour process included a University of Kansas/KDOT collaborative study on deck concrete, as material used for the project included a special aggregate. Completed in November, the bridge is two lanes with widened shoulders. Greg Gonzales' road squad designed the project.

In Memory

Condolences to the family and friends of KDOT employee **Richard “Rick” Looper**, who passed away in Kansas City on Oct. 31. Looper started in 1989 and worked at KDOT for nearly 32 years. He served as a Highway Maintenance Supervisor in Kansas City at the Lamar Subarea office. He is survived by his wife, Tabitha, two sons, a daughter and two grandchildren. According to Looper’s Supervisor, Drake Jennings, “Rick was very dedicated to KDOT, he took pride in everything he did. His employees looked up to him and enjoyed working with him. He will truly be missed.”



Rick Looper

Condolences to the family and friends of KDOT employee **Kevin Duerksen**, Newton, who passed away on Nov. 14. After service with Kansas State University, Duerksen started at KDOT in 2010 as an Equipment Operator at the Newton office. He had more than 24 years of state service. He is survived by his wife, Kathy, two children and two grandchildren. Duerksen was involved with the Newton Saddle Club and also was a leader for 4-H Shooting Sports in Harvey County for 30 years.



Kevin Duerksen

Condolences to the family and friends of KDOT employee **Ron McMurry**, who passed away on Nov. 26 in Topeka. McMurry started in 1993 and worked for KDOT for nearly 29 years. He was the Contracts Audit Manager for many years in the Bureau of Fiscal. Recently the Contract Audit Section was moved to the Inspector General’s office. He is survived by his wife, Donna, and two children. He was a Scout leader for his son’s Boy Scout troops. McMurry enjoyed helping others and also was a master of crafting and working on home projects.



Ron McMurry

Condolences to the family and friends of KDOT retiree **Mike Crow** who passed away on Nov. 6, in Loveland, Colorado. Crow started at KDOT in 1973 and served in Headquarters, District Three and District Six. He retired in 2008. He served in several positions including Chief of Traffic Engineering, Director of Operations and Director of Planning and Development.

Condolences to the family and friends of KDOT retiree **Dan Ferrin**, who passed away on Nov. 9 in Wichita. Ferrin started at KDOT in 2001. He served as an Equipment Operator at the Coldwater Subarea office for nearly 17 years. Ferrin retired in 2018.

Condolences to the family and friends of KDOT retiree **Glenn Anschutz**, who passed away on Nov. 23 in Topeka. Anschutz started in 1950 and served in several positions including Engineer of Photogrammetry, Engineer of Design, Transportation Planning Bureau Chief and Assistant Director of Engineering and Design. He retired in 1988.

Condolences to the family and friends of KDOT retiree **Rebecca (Becky) Hewett**, who passed away on Dec. 2 in Holton. Hewett started at KDOT in 1982. She retired as a Legal Assistant in the Chief Counsel’s office in 2012 after 30 years of service.

Condolences to the family and friends of KDOT retiree **William “Mike” M. Burton, Jr.**, who passed away on Dec. 4 in Silver Lake. Burton started at KDOT in 1966. He served as an Engineering Technician Specialist in the Bureau of Design. He retired in 2001 after 35 years of service.

KDOT's new clear zone program enhances safety

By Tim Potter
District Five

The Wheat State has its share of rural two-lane highways, and KDOT has a new initiative to improve some of them. It's called the Clear Zone Safety Improvement Program, which KDOT created to focus on highways that don't have enough right of way to widen or add shoulders and improve the clear zone.

Some might not be familiar with the term "clear zone." The Federal Highway Administration defines a clear zone as "an unobstructed, traversable roadside area that allows a driver to stop safely, or regain control of a vehicle that has left the roadway."

KDOT's clear zone initiative is a \$10 million annual program aimed mostly at roadways KDOT refers to as D and E routes.

According to Chris Herrick, KDOT Director of Planning and Development, the program was created to address serious-injury and fatal crashes on some of the state's lower-volume highways with limited usable shoulders or no shoulders.

"This is part of KDOT's effort to move toward a more systemic approach to safety," said Herrick. "A systemic approach looks for road characteristics that may lead to higher crash frequency and severity. This is an example of field and headquarters personnel working together to address a safety need."

The first step, Herrick said, is to purchase right of way and grade the highway to improve the shoulder width and side slopes. This allows a motorist who leaves the highway more opportunity to recover.



Under the new clear zone program, District Five has a pilot clear zone project under design. The project, in the survey stage, is on U.S. 160/U.S. 183 in Comanche County. The project covers a little over a 5-mile stretch - from the K-1/U.S. 160/U.S. 183 junction north to Fourth Street in Coldwater. The basic scope is to widen shoulders, do grading, extend culverts and replace drainage pipes. Google photo

The next step is to pave the improved shoulder when KDOT does a light maintenance job, known as 1R, on the corridor.

Another key part of improving the clear zone is extending structures or moving obstructions farther away from the travel lanes.

Herrick said the program helps address roadway-departure crashes – one of the top contributing factors in fatal crashes.

Projects are being sought statewide, according to Herrick. So far, requests have been received from District Five and District Two in north central Kansas.

"As we proceed with the program, we will be making tweaks and communicating our project expectations to the district so they know exactly what type of projects we are looking to do," Herrick said.

Always check and double check for safety

By Troy Whitworth
Director of Safety

A few years ago, I stopped by one of the local Sonic burger joints in Topeka. I pulled into a stall, then shut my car off to order food. I don't remember what I ordered, but I do remember sitting there waiting on my food for a few minutes. When my food arrived, I paid the carhop and started eating. Once I finished, I turned the key to start the car - nothing happened.

Come to find out, I had left my lights on while it was sitting in the stall. It had been misting rain, so I had turned my lights on while driving. My car dinger didn't alert me that the lights were on since the key was still in the ignition and I hadn't opened the door. My car battery had discharged enough that it wouldn't start the car. (I also might add the battery was getting close to the age of needing to be replaced.)

I asked one of the carhops if anyone could help me jumpstart my car. She checked with her manager, and he was willing to help. He pulled his vehicle in the stall next to my car, and we raised the hoods on both of our vehicles. He had a set of jumper cables and from how confident he was acting, it appeared like he had jumpstarted a vehicle before.

He handed me one end of the jumper cables, and I hooked up my end of the cable to my vehicle's battery first (red cable to the positive terminal on the battery). When I finished this, the store manager hooked up the

battery cables to his vehicle. I then finally hooked up the black cable onto the metal frame on my car.

I jumped into my vehicle and proceeded to try to start my car. The starter didn't even click. I let it sit for a couple of minutes and tried it again - nothing happened. I then got out of my vehicle looked at the battery terminals and they appeared to be smoking. Then it struck me to ask the store manager how he had hooked up the cables to his vehicle. He had the cables hooked up to the wrong terminals!

I immediately pulled the ground cable off my car. I went over to his vehicle and removed the cables, then hooked them up correctly. Then I re-hooked the other end of the ground cable back onto a metal stud on my car. I hopped back in my car and turned the key in the ignition - it fired right up.

I learned a valuable lesson that day. I hadn't verified what cable the

store manager was hooking where. This error in my judgement could have damaged my car battery and caused it to explode. On this occasion I got away with a story about a close call and a great reminder about the importance of discussing a plan of action.

I should have started this job with a tailgate briefing before taking any action. So, the next time you go out to do a job, try to keep in mind that not everyone understands what is expected of them - even when they appear to be confident in their abilities. For your family and mine.

Click [HERE](#) for an article on how to jump start a car.



I-70 work wrapping up

A \$9.3 million resurfacing project on 16 miles of I-70 in Ellis County is expected to wrap up in December, just in time for the busy holiday travel season. Construction began in August, starting just west of the Trego County line to the U.S. 183 junction at exit 159 in Hays. Project work includes a mill and inlay on the driving lanes, followed by an overlay on both the driving lanes and shoulders. New pavement markings will also be installed. Photos at right - westbound (above) and eastbound (below). Kris Norton's road squad and Dominique Shannon's bridge squad designed the project. Photos by Lisa Mussman, District Three



Give the gift of KANSAS!

By Andrea Etzel
Publications Manager & Editor-in-Chief, KANSAS! Magazine

KANSAS! magazine celebrates the best of the Sunflower State - the people, places and wide-open spaces. Our award-winning Kansas writers, photographers and artists tell the stories of our state through inspiring words and exceptional imagery. Features and photo essays showcase a variety of topics – from the people and communities to travel, food, culture and heritage.

Published five times a year, subscribers also receive an annual calendar and specialty publications. Give a subscription to yourself, a family member or a friend - it will be enjoyed all year long (and it's the best way to fit the whole state into a stocking).

For orders by Dec. 31, KDOT employees and retirees can receive a special limited-time subscription price of \$18 for 1-year (a \$2 off savings!) - use the code [KDTEMP](#) for the discount. Click [HERE](#) to subscribe online, or call 1-866-526-7624. For questions, please email me at andrea.etzel@ks.gov.



Kids across Kansas think about traffic safety



A total of 17 students were selected as regional and/or statewide winners in the annual Put the Brakes on Fatalities Day poster contest. Presentations have been taking place across the state to highlight their efforts of focusing on traffic safety. Photos by KDOT Public Affairs Managers

1. District Six winner Wren Berggren with parents and KHP Trooper Michael Racy. 2. District One winner Annika Mick with KHP Troopers Ben Gardner and Don Hughes. 3. District Two winner Hattie Krug. 4. District Four winner Nash Forester.



5. District Five winner Cade Brown. 6. District Three winners Janessa Miller and Matthias Miller.

Trivia!

President – fun facts – Part Two

1. President Harry S. Truman – what does the 'S' stand for?
2. Who was the first President to live in the White House?
3. What President was the first student to graduate from

Princeton University?

4. The capital of Liberia is named after this President.
5. What President participated in nearly 100 duels?
6. What President had 15 children?
7. What President smoked more than 20 cigars a day?

KTA releases Annual Report, customer survey results

Last month, KTA released its Fiscal Year 2021 Annual Report, Customer Satisfaction Survey results and plans for a toll adjustment effective Feb. 1, 2022. The majority of customers - those using an electronic transponder to pay for tolls - will only see a 2% increase and will save up to 35% compared to the price at the tollbooth.

Customers who pay at a tollbooth will see about a 12% increase. The toll adjustment will help maintain KTA's financial position, which will be needed to fund future improvements and aid in recovery from lost revenue due to COVID-19.

KTA does not receive any tax funding and relies on tolls collected for operations and roadway maintenance.

Read the news release [HERE](#).



Trivia answers

1. No name in particular. His parents couldn't decide on a middle name so the S honors his grandfathers' names.
2. President John Adams. The White House was under construction during Washington's term, but he never lived there.
3. President James Madison.

4. Monrovia is named in honor of President James Monroe.
5. President Andrew Jackson – most of which were to defend the honor of his wife.
6. President John Tyler.
7. President Ulysses S. Grant.

Thank you for your service

Milestones

KDOT employees celebrating state service anniversaries in December.

30 years

Stephen Rockers, Lawrence Office Manager, Lawrence

20 years

Michael Cook, Equipment Operator Senior, Oberlin

Todd Herman, Procurement Officer III, Burlingame

Darren Miller, Equipment Operator Senior, Kinsley

Brian Nutter, Engineering Technician, Topeka

Trini Vega, Equipment Operator Senior, Morrill

Tammy Wilson, Engineering Technician Specialist, Topeka

10 years

Richard Dixon, Engineering Technician, Topeka

Angela Jack, Accountant I, Stark

Patricia Northup, Utility Worker, Phillipsburg

Trapis Vizner, Equipment Operator Specialist, Belleville

Retirees

The following employees retired on Nov. 1.

District Three

Todd Tompkins, Equipment Operator Senior, Oberlin

The following employees retired on Dec. 1.

Headquarters

Lee Ann Legge, Specifications Engineer, Construction & Materials

District Five

John Berndsen, Highway Maintenance Supervisor, Winfield

The following employees will retire on Jan. 1.

Headquarters

Robert Howard, Management Analyst II, Engineering & Design

Darrel Kahle, Engineering Technician, Road Design

Michael Stringer, Bureau Chief, Local Projects

District One

Edward Gaydess, Engineering Technician, Kansas City

Leonard Harding, Equipment Operator Midpoint, Topeka

Terry Thompson, Highway Maintenance Supervisor, Emporia

Steven Unruh, Engineering Technician, Topeka

District Two

Richard Krotz, Equipment Operator Senior, Belleville

Alvin Unrein, Refrigeration and AC Service Tech Senior, Salina

District Three

Melvin Pelkey, Engineering Technician Senior, Atwood

John Rome, Equipment Mechanic Specialist, Hays

District Four

Michael Bright, Engineering Technician Specialist, Chanute

District Five

Daniel Espinosa, Equipment Operator Senior, Kinsley

Jess Michael Loret, Facilities Manager, Hutchinson

District Six

Carla Wilson, Administrative Assistant, Liberal

Be sure to use your discretionary day. The last day to use your 2021 discretionary day is Thursday, Dec. 23, due to the officially observed Christmas holiday falling on Friday, Dec. 24.

KDOT Employee Council Holiday Ornament Order Form

Year	Quantity	Cost	Total
2021		\$5	
2020		\$3	
2019		\$3	
2018		\$3	
2016		\$3	
2015		\$3	
Total enclosed			



Please Print -

Name: _____

Work address: _____

_____ (Retirees only - home address)

Best phone: _____

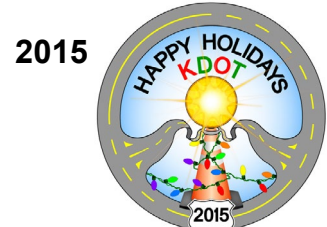
How to Order: HQ - email/call Jennifer to make arrangements.

Districts/Retirees - Mail form to - Jennifer Meyer, ESOB/6th Floor, 700 SW Harrison, Topeka, KS 66603

Make checks payable to
KDOT Employee Council

For more details,
contact Jennifer:
(785) 296-3661 or
Jennifer.Meyer@
ks.gov

Past Ornaments Available



GIVE THE GIFT OF KANSAS

\$55



Ad Astra

NEW

\$30



Bluestem

\$25



Konza

Did you know your gift purchases are a "gift" to those you purchase *from* as well as who you purchase *for*? Support Kansas producers, agribusinesses and food companies this holiday season by purchasing one of our holiday gift boxes.

Find our holiday gift boxes online at:

shop.fromthelandofkansas.com

Each box is filled with a variety of both sweet and savory goods, so there is something for everyone to love. Purchase your delectable selection of goods by December 10 to guarantee holiday delivery!



**Prices do not include tax and shipping.
**Shipping available to all 50 states.
**If you are ordering a quantity of more than 10 gift boxes, please call 785-564-6759 to ensure your delivery can be fulfilled and delivered by December 25.