

# TRANSLINES EXPRESS

May 13, 2020

## Coronavirus updates continue



**We are in this together—**

As we all do our part to slow the spread of COVID-19, KDOT remains committed to maintaining our highways and keeping commerce moving. **Be safe out there.**

A few reminders from KDOT Director of Human Resources Maribel Manos -

- ♦Until it is announced, KDOT buildings will remain closed to the public as well as all Capitol Complex State Office Buildings in Topeka (including ESOB).

- ♦For employees reporting to offices to work, practice proper social distancing and remain at least 6 feet from other employees. If social distancing cannot be achieved, wear a disposable mask, cloth face mask, neck gaiter or bandana.

- ♦For employees reporting to the Eisenhower State Office Building, temperature screenings are taking place from 7 a.m. to 3 p.m., Monday through Friday, at the north and south entrances.

- ♦For employees reporting to work in District/Area offices, they will see a sign with questions and have their temperature read.

- ♦Employees in any buildings who answer yes to the questions or have a fever

will go through further screening and possibly be sent home.

***The Kansas Department of Health and Environment's website provides details on all the latest Kansas news pertaining to COVID-19. Go to this link directly – [click here](#)***



***More safety-related information for employees is inside this edition.***

*KDOT has safety reminders on dynamic message signs across the state.*



Work is progressing on bridge demolition over the Cedar Bluff Reservoir spillway on K-147 in Trego County. The concrete deck and rail has been removed, and several of the steel deck beams between the main arch bridge trusses have been removed as crews are now working on preparations for the new girders. A large-capacity crane will be moved in soon to remove the remaining beams and trusses and then set the new girders. The project should be completed by the end of August, weather permitting. Photos provided by consultant inspector.



## Rinehart joins KDOT in Olathe

By Tracy Crockett  
District Five

Mike Rinehart joined KDOT on May 4 as the new Olathe Metro Engineer.

Rinehart is a graduate of Wheaton College in Illinois with a bachelor's degree in liberal arts. He also earned a bachelor's degree in civil engineering from the University of North Dakota.

He spent 27 years with the Missouri DOT, working in towns such as Jefferson City, Joplin, Nevada and St. Joseph.

"I'm looking forward to getting to know both fellow KDOT employees as well as community leaders and anyone else serving the area for transportation purposes," Rinehart said. "I've already heard a number of positive comments about the Area Two team and I'm available and eager to help in any way I can."

He is married with four children. His daughter is beginning her career as a nurse, his oldest son is married with a one-month old son, his other son is a college senior and his youngest son is a high school senior. He will be moving to Olathe early next month.



Mike Rinehart

### TRANSLINES EXPRESS

Published by the  
**Kansas Department of  
Transportation**

Office of the Secretary  
Eisenhower State  
Office Building  
700 SW Harrison  
Topeka, KS

**Transportation Secretary**  
Julie Lorenz

**Deputy Secretary**  
Burt Morey  
Maggie Doll  
Lindsey Douglas



**MY mask protects YOU.  
YOUR mask protects ME.  
Together, we can slow the spread of COVID-19.**

## COVID-19 directive: The importance of wearing masks

By Tim Potter  
District Five

They come in different shapes and colors, sometimes with a team logo.

They may be soft material, but KDOT considers face coverings a shield against COVID-19.

KDOT employees recently received updated rules for using face coverings to help prevent the spread of COVID-19.

In noting the importance, Burt Morey, Deputy Transportation Secretary and State Transportation Engineer, said in an email to all KDOT employees on May 7: “This week I’ve heard examples of employees not following them, and that concerns me.”

Morey continued: “The face covering requirement is for all KDOT employees, whether you are working in the field or in an office. Face coverings are a type of PPE that KDOT is requiring right now. Failure to follow this requirement will result in similar consequences as not wearing a safety vest on KDOT right of way, or other types of required PPE.”

The Deputy Secretary also highlighted this key part: “If you cannot keep a minimum of 6 feet between you and another person, you must wear a face covering.”

Employees don’t have to wear a face covering if alone

in their cubicle or office, but if they step into a hallway or stairwell or visit another’s workspace, they are required to wear one.

His email also explained that the coverings “form a barrier between you and another person.” It noted that face coverings can be a “disposable three-ply mask, washable cloth mask, neck gaiter, bandana or other device that covers your mouth and nose.” The coverings must be worn correctly so that they cover the mouth and nose.

Director of Safety Catherine Patrick told employees returning to Eisenhower State Office Building in Topeka that face coverings should be worn in hallways, elevators, bathrooms, eating areas, work rooms and around copiers.

The same rules also apply in other KDOT offices, she said.

“As members of the KDOT family, I am hopeful that all our folks will

understand the importance of wearing face coverings,” Patrick said.

According to the Centers for Disease Control and Prevention, the face covering is meant to protect other people in case you are infected.

Safety Coordinator Mark Johnson said staff will be checking to make sure that employees are properly distancing, washing hands, wearing masks and cleaning facilities and vehicles.

**“Face coverings are a type of PPE that KDOT is requiring right now. Failure to follow this requirement will result in similar consequences as not wearing a safety vest on KDOT right of way, or other types of required PPE.”**

**Burt Morey**

# Trivia!

**The 50th anniversary of Earth Day was last month.**

1. What happened on the first Earth Day celebration?
2. Who proposed Earth Day? What inspired them?
3. What did astronaut Stuart Roosa take with him on the

Apollo 14 moon mission in 1971?

4. When was the first Canadian Earth Day?
5. What was the theme for Earth Day 2016?
6. What took place in China on Earth Day 2012?

## New joy for Mother's Day

By Kelly Kultala  
District One

Families across Kansas celebrated Mother's Day last weekend. And although social distancing was a forethought, honoring mothers was still a priority.

In 2013, Jennifur Hymon-Harpe, District One Human Resource Professional I, lost her mother to cancer. They were a large close-knit family that celebrated every family milestone together creating special memories. When her mom passed away, the sorrow was overwhelming, she said. For several years, Hymon-Harpe dreaded Mother's Day because all the hype and advertising reminded her of what she had lost.

Then two years ago, when Hymon-Harpe and her wife, Katie, found out they were expecting their son, Zaire, her outlook on Mother's Day changed. Spending time with her son doing little things, such as playing on the deck in their backyard, has brought back the joy in Mother's Day and has reminded her of her blessings.

There wasn't a large family gathering for Mother's Day this year, but time was spent with her wife and son



*KDOT's Jennifur Hymon-Harpe (seated) and her wife, Katie, enjoyed Mother's Day with their son, Zaire.*

doing something simple at their house.

"Mother's Day means so much more when you have your own child, I really appreciate the time that I will be able to spend with my loved ones," reflected Hymon-Harpe.

## Trivia answers

1. On April 22, 1970, 20 million Americans participated in coast-to-coast rallies for a healthy, sustainable environment.
2. Sen. Gaylord Nelson, of Wisconsin, who was also an environmental activist. A massive oil spill in Santa Barbara, Calif., in 1969.
3. Hundreds of tree seeds including Loblolly Pine,

Sycamore, Sweetgum, Redwood, and Douglas Fir. The seeds were planted around national monuments and other sites around the world.

4. Sept. 11, 1980.
5. Trees, with a goal to plant 7.8 billion in five years.
6. More than 100,000 people rode bikes in China to raise awareness about climate change.



# KDOT keeps rest areas open across the state

During the coronavirus efforts, KDOT has continued to keep its rest areas open across the state for motorists, and especially the trucking industry. This hasn't been an easy task, according to Maintenance Bureau Chief Clay Adams.

"We continued to experience a level of vandalism at these facilities. Beyond having fixtures destroyed, we had a rash of toilet paper thefts," Adams said. "People were tearing the locked dispensers off the wall in order to take this now rare commodity. Hopefully with the supply of toilet paper increasing, we will not continue to experience these thefts."

Crews are frequently providing maintenance at the rest areas, but Adams recommends that people bring a roll of toilet paper with them while traveling, just in case.

Adams said KDOT took an extra step to support the trucking industry by temporarily opening an I-35 rest



*KDOT rest areas, like this one near Park City, have remained open during the coronavirus pandemic to help all motorists when traveling. File photo*

area that was closed for a remodeling project.

"The facilities were in desperate need of replacement and were not functioning due to a water line leak under the parking lot," Adams said. "We took the extra step of re-opening the truck parking area and provided portable toilets and a hand washing station for the truckers to be able to continue to use this site for their mandatory rest breaks."



# REST ASSURED— OUR REST AREAS ARE STILL OPEN. DRIVE SAFELY.

For updated road conditions, check [www.kandrive.org](http://www.kandrive.org)

# Storm damage restricts travel on I-70, K-177

By Ashley Perez and Kelly Kultala  
District Two and District One

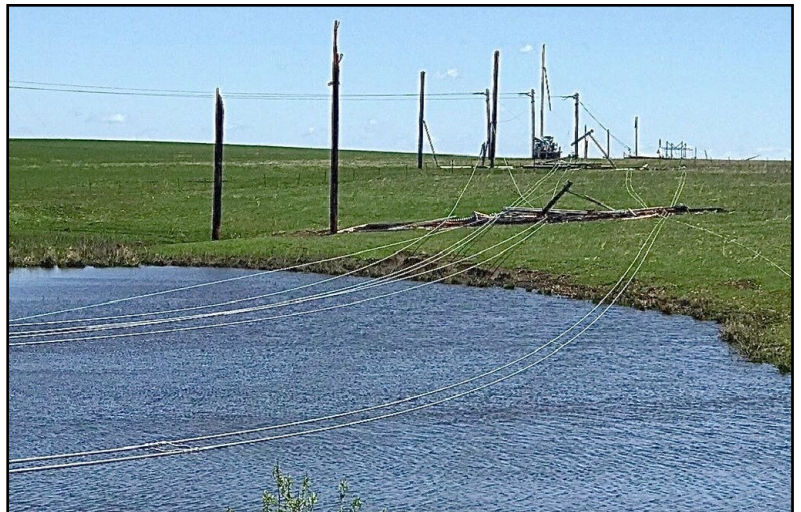
As some Kansans woke to strong winds, heavy rainfall and possible hail on May 4, Jerry Cox, Highway Maintenance Supervisor in Alma, sent his crew out to clear hail off the roadways - they then discovered that was just the beginning.

Ross Buchanan, Equipment Operator in Alma, found more extensive damage, including downed power lines. Jeff Romine, Area Superintendent, was alerted of the damage by Cox and the KHP. They determined I-70 would need to be closed from the Manhattan to Wamego exits due to downed power lines and multiple accidents.

This prompted Randy Kunc, Highway Maintenance Supervisor in Council Grove, to immediately check the roads in his area. He quickly discovered K-177 also had power lines down just south of I-70 that were restricting travel.

A semi on I-70 was found on its side. Another semi on K-177 was pulled by power lines into the east ditch. Cranes were used to hold some power lines up until temporary poles were set.

K-177 remained closed from I-70 south to K-4 until late on May 6. Eastbound I-70 reopened early on May 4 and westbound I-70 had one lane open throughout the night.



**Top photo:** This picture provided by the KHP shows the scene with power lines down along I-70 near mile marker 315. **Middle and bottom photos:** Along K-177, power lines were also down over a pond and debris was strewn along the road. Photos by Kevin Jirak and Randy Kunc, District Two

# Work begins on delayed U.S. 169 project

By Priscilla Petersen  
District Four

Work on a previously delayed project to reconstruct and rehabilitate 7½ miles of U.S. 169 in Anderson County started in early March.

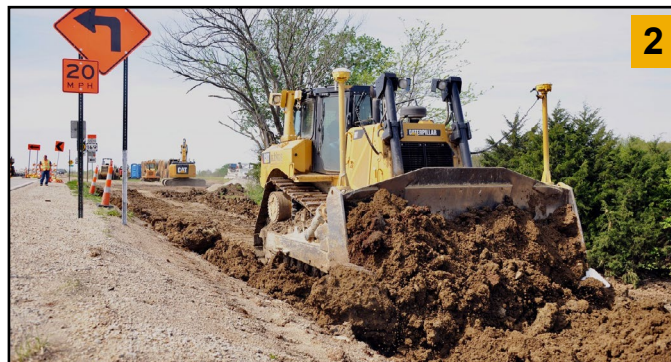
Activity includes reconstructing U.S. 169 from Welda north to U.S. 59, and widening shoulders and replacing the pavement from U.S. 59 north to the roundabout at Garnett. In addition, the project will improve the vertical alignment of the highway and provide more opportunities to safely pass slow-moving vehicles.

In April part of the project area was closed, and traffic placed on a signed detour using U.S. 54 and U.S. 59. Bettis Asphalt & Construction, Inc., of Topeka is the primary contractor on the \$21 million project, which should be finished by early 2021.



1

1 - Northbound one-lane traffic waits for the green light before traveling through a work zone concrete pour at a bridge on the U.S. 169 project in Anderson County.



2

2 - Grading operations continue on U.S. 169 north of U.S. 59.



3

3 - Lots of dirt and rocks are unearthed during grading on the closed section of U.S. 169. KDOT inspector Ken Ruppel surveys the work. Photos by KDOT Multimedia

## KDOT's MAGIC camp featured in Public Roads magazine

KDOT's 2019 MAGIC Camp event was featured in Public Roads magazine. The program helps high school girls learn about opportunities in construction and transportation fields. MAGIC stands for mentoring a girl in construction.

"MAGIC Camp is an exciting program, but unfortunately this year is on hold due to COVID-19 and the Governor's reopening of Kansas plan, which rolls out in various phases and are subject to change," said KDOT Civil Rights Administrator Doria Watson.

Click [here](#) - story is on pages 20-23.



2019 MAGIC camp participants checked out construction equipment.

# Bicycling: An activity that can be a family affair

By Kelly Kultala  
District One

Spring has sprung and more and more people are outside taking advantage of the warmer weather getting out of the house to exercise. May is National Bicycle Awareness Month, which is an opportunity to showcase the many benefits of bicycling and to make people aware of the need for additional driving precautions.

Brian Link, District One, Area Three Supervisor, has been riding a bike for the past six years. He became interested in bicycling because he hates to run. Whether he's outside on the street or a trail or inside having his bike hooked up to his smart trainer, he averages 30 to 100 miles or more a week.



*From back to front, KDOT's Brian Link, daughter Carmen and wife Tina take a bike ride.*

His smart trainer app can simulate an actual ride he has taken in his hometown of Gardner, or he can ride virtually along the ocean in California or the beautiful countryside in Switzerland.

Link and his wife, Tina, really enjoy riding their bikes together, and sometimes they can coerce their 12-year old daughter, Carmen, to join them, making it a family affair. They enjoy exercising, stating, "that it helps to clear our head."

Their biggest obstacle to riding their bikes outside has been inattentive drivers, who don't notice bicyclists until it's too late. They have had many drivers honk their horns or flip them off because they are frustrated with how slow bicyclists may be

riding. Link would just ask, "that drivers give bicyclists three feet clearance as they drive by, per state law, and

# U.S. 50/281 roundabout getting closer to opening

By Tim Potter  
District Five

The new roundabout at U.S. 50 and U.S. 281 in Stafford County is getting closer to completion.

It could be open around June 1, depending on the weather.

Much of the remaining work consists of installing signs and marking pavement.

The roundabout includes an inner road for regular traffic and an outer diamond-shaped road for oversized loads.



*The roundabout in Stafford County could be open around June 1, weather permitting. Photo by James Middleton, District Five*



# IT security implications for KDOT remote workers

**Provided by Bill Kritikos, from KDOT's IT Security Unit**

When KDOT employees are working from home or at a remote site they need to follow the same precautions they use in their offices and even be more careful when they use personal devices and public Wi-Fi networks. According to CSO Online, "83% of phishing attacks over the past year took place outside the inbox — in text messages or in apps like Facebook Messenger in a variety of games and social media services."

KDOT has provided two Virtual Private Networks (VPNs). These networks are to be used by our remote workers when doing their daily tasks that involve KDOT data and information passing through unsecured public networks.

Similar to what a firewall does, VPNs protect your laptop's data online, with the front end retaining the same security, functionality, and appearance despite being a Wide Area Network. VPNs combine encryption protocols and dedicated connections to create virtual P2P connections, which in turn keep hackers from accessing transmitted data that they may have managed to obtain. This level of protection is attributed to VPNs' encryption.

The old adage, "prevention is better than cure," also applies to this very day, even on remote workers. Though there are a number of software that offers protection for valuable data and information, it is still crucial for employees working outside of the office to do their part.

Here are a few examples of risky behavior that should be avoided at all cost:

- ♦ **Sharing the laptop** or computer with friends or family. This is very dangerous, since there is a risk of not being able to monitor each and every website they go to, which could put your office data at risk.
- ♦ **Do not use state computer to access other networks**, such as your local Internet provider or open Internet provided by businesses. This exposes your laptop's data to potential hacking, since no authentication is necessary to establish a network connection, especially when it comes to Public Wi-Fi.

- ♦ **Carelessness in opening emails.** This includes clicking on the links without scrutinizing the source of the email if it is legit or not. By unknowingly clicking these suspicious links, data is exposed to hackers and online attackers.
- ♦ **KDOT employees should not open any email that has "COVID-19,"** or is offering help to cure, protect, prevent infections or offer aid to others unless it comes from a sender whose email address ends in "ks.gov." Even emails from your known organizations, KDOT business partners, your church or other religious organizations may be spoofed. If you do not know the sender delete it. Even if you know the sender it may be a spoof. Call the sender before you open the email to see if they sent it.
- ♦ **Be wary of social media.** Some remote workers are required to engage in various social media platforms - always make sure to check all links and their sources before clicking or opening any of them.

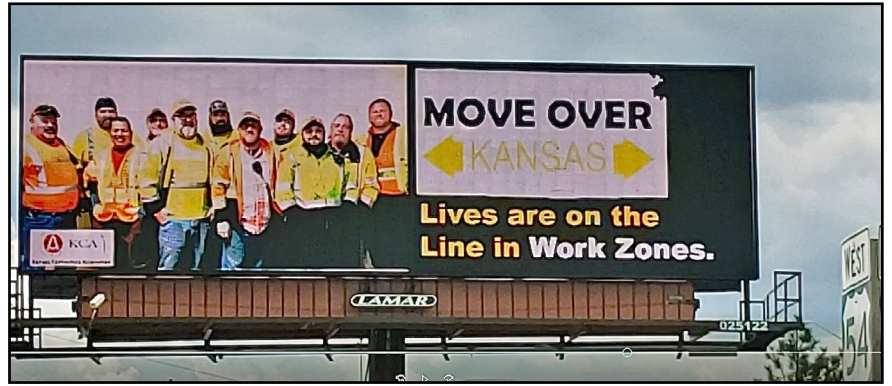
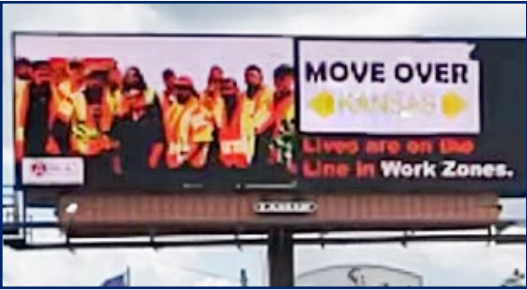
KDOT is responding to COVID-19 by allowing, and even mandating remote working. While increasingly common even before the virus, remote work brings its own unique set of cybersecurity challenges.

**The first threat is phishing.** Homeland Security, the U.S. Secret Service and the World Health Organization have all warned of coronavirus-related phishing scams. Cybercriminals exploit the coronavirus through mass emails posing as legitimate health organizations, they warn. The recipients review the email, infecting their systems. Or they are taken to realistic websites asking for their credentials. Too many comply, compromising their logins.

**KDOT employees are reminded that legitimate groups do not request personal information.** Verify any hyperlink before clicking on it. Be wary of any email insisting on immediate action. Generic greetings or an unfamiliar sender are other markers. And while bad spelling and grammar often signal phishing, beautifully written communiques can be just as dangerous. The best defense is common sense. KDOT workers should get into the habit of pausing before responding.



The Wamego Subarea, at left, and two Wichita Subarea offices, below, were just a few of the numerous groups of KDOT highway workers featured on nearly 70 billboards across the state during National Work Zone Awareness Week in April. The Wamego group was on a billboard located on K-18 near Manhattan and the Wichita groups were on billboards in downtown Wichita (pictures were taken before social distancing guidelines were in place).



## KTA info

- ◆ **Brief:** A paving contract was awarded and has begun on I-70/KTA. The project includes pavement surfacing between mile markers 183.3 and 197.8, resurfacing the Lecompton Interchange, and expanding truck parking at the Topeka Service Area. Read the full release [here](#).

*In the photo at right, crews pour for a new drainage box culvert at mile marker 19 on I-35/KTA near Wellington.*



# Organizations celebrate successes

KDOT construction leaders, Kansas contractors, consulting engineers and municipalities met on March 5 to celebrate the 2019 heavy highway construction season's annual Partnering awards. The awards highlight outstanding communication, collaborative problem solving and the ability to address difficult issues in the best interest of the project.

Three of the 16 projects receiving awards are highlighted below. **To see all of the projects that received awards, click [here](#).**

In each of the photos are KDOT Director of Operations Larry Thompson and Dustrol representative Brian Hansen.



**1 - District Five bridge replacement project in Arkansas City** - Reece Construction Co, Inc., and KDOT Winfield Construction office. The project came in at .1% within budget and surrounding neighbors writing letters of appreciation. Pictured: Marynell Popst (Reece), Charles Scott (Kirkham Michael) and Dean Boatright (KDOT, Winfield).



**2 - District Three bridge repair project in Ellis County** - PCI Roads, LLC, and the Hays Construction office. After a severe storm, crews mobilized to return to operations the next day, with all work completed on time. Pictured: Ryan Wilson (PCI Roads) and Joshua Morales (KDOT, Hays).



**3 - District One, two projects coming together in Wyandotte County** - R.A. Knapp Construction, Inc., and Leavenworth Excavating & Equipment Co., Inc. (Lexeco) and the Bonner Springs Construction office. A partially-collapsed pipe under I-635 had to be replaced rather than have a liner inserted - this was beneath another current project taking place. The separate project teams executed the plan in 11 days. Pictured: James Parrish, (KDOT, Bonner Springs)

## Thank you for your service

The following employees retired from KDOT on May 1.

### **District One**

**Donley Rees**, Engineering Technician, Emporia

### **District Two**

**Galen Johnson**, Equipment Operator Senior,  
McPherson

### **District Five**

**Leslie Gregory**, Engineering Technician Specialist,  
Winfield

*This list was in En Route to Friday, but is being  
reprinted for Translines.*

## In Memory

Condolences to the family and friends of KDOT retiree **Delmer Dunham**, who passed away on May 1. Dunham began his KDOT career in 1960, retiring in 1998 as a Staff Engineer in Dighton. Following his retirement, he continued part-time as a Professional Civil Engineer I in District Six until 2017.

Condolences to the family and friends of KDOT retiree **Everett Olson**, who passed away on April 12 in Hutchinson. Olson joined KDOT in 1943 and went on to become a licensed engineer. He worked for a time in District Six and retired from KDOT in 1987 as the District Three Engineer.

Condolences to the family and friends of KDOT retiree **Norman “George” Carr**, who passed away in Garden City on April 7. Carr began his KDOT career in 1967 and retired in 2010 after 43 years. He served as an Equipment Operator III in District Six.

Condolences to the family and friends of KDOT retiree **Robert Ternes**, who passed away Feb. 28 in Arkansas City. He started at KDOT in 1977, served for 30 years and retired in 2008. Ternes was a Highway Maintenance Supervisor in Winfield.



*KDOT's Neil Croxton found these pretty flowers on one of his trips across Kansas. He is a Geologist based in Salina.*