

Translines EXPRESS

July 17, 2019



Charged up for Electronic Vehicles

Great news for KTA customers with electric vehicles - there will soon be Level 2 and DC fast charging stations at the Towanda, Topeka and Lawrence service areas, thanks to a partnership with Westar Energy and KCP&L.



Gov. Laura Kelly spoke at the Electric Vehicle (EV) charging station event this morning at the KTA's Topeka Service Area to celebrate the new charging stations that are now open along the Turnpike. Electric vehicle charging stations is a game changer, Gov. Kelly said. Kansas will now have 184 EV stations, and increased usage of EV allows us to keep our air cleaner which contributes to a healthier Kansas and air qualities, she said. Photo by Mallory Goeke

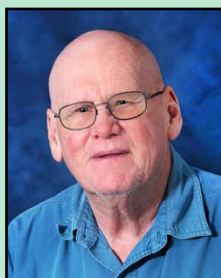
Meggers named

By Kim Stich, Headquarters

Meggers named: Dave Meggers has been named the Chief of the Bureau of Research.

He started at KDOT in 1989 as Assistant Bridge Inspection Engineer in Local Projects. After a brief stop in the Bureau of Design, he went to the Bureau of Research in 1990 as the Research Development Engineer. He was in this position until 2016 when he was selected as the Assistant Bureau Chief.

Meggers wants to maintain the bureau's relationship with industry partners. "We have a great relationship with the concrete and asphalt industry," he said. "And



Dave Meggers

I want to mentor the people who are now working with them directly so they maintain those relationships."

He also sees benefits with continuing efforts through the K-TRAN program, the Transportation Research Board and the AASHTO Research and Advisory committee. "We bring a lot of information back from TRB every year and we put a lot in," he said. "This allows us to do a better job here in Kansas and get more research out to the people who need it."

Kansas is one of the few states that still has research staff who conducts research in the lab and in the field, Meggers said. "It's a major asset for KDOT," he said. "Our staff can give near instant responses to problems or questions for field applications."

Trivia!

50th anniversary of the moon landing -

1. What day did the actual moon landing take place?
2. Who were the astronauts on Apollo 11?
3. Who were the two astronauts who walked on the moon?
4. What famous words were said by one of the astronauts?
5. How long did the astronauts spend on the moon's surface?
6. What did the astronauts do while on the moon?
7. What was left on the moon?
8. The space suit and all the equipment they carried weighed about 180 pounds on Earth. How much did it weigh on the moon?

Retirees

The following employees will retire from KDOT on Aug. 1.

District One

Eugene Vaught, Equipment Operator Senior, Holton

District Two

George Tovar, Equipment Operator Senior, Abilene

District Three

David Luedke, Engineering Technician Supervisor, Atwood

District Five

Dennis Schaller, Equipment Operator, Kinsley

District Six

Danny Campbell Sr., Equipment Shop Supervisor, Garden City

In Memory

Condolences to the family and friends of retiree Phil Gilman, who passed away on June 27 in Topeka. He worked at KDOT Headquarters for 35 years, retiring from the Bureau of Right of Way.

Scenic

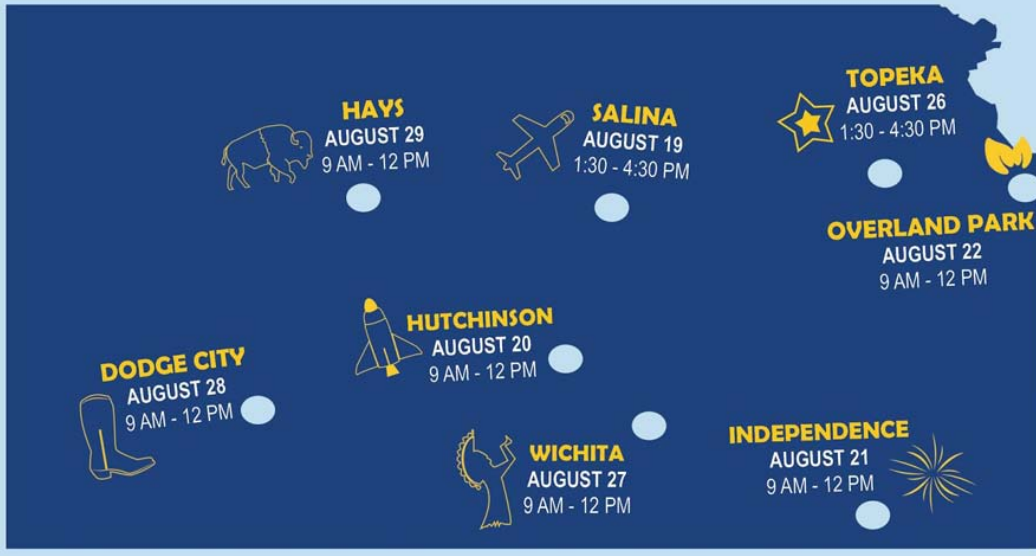


John Cukjati, from Headquarters, was in Colby recently doing traffic count studies along K-25 and captured a photo of a rainbow.

TRIVIA ANSWERS

1. July 20, 1969
2. Neil Armstrong, Buzz Aldrin and Michael Collins.
3. Armstrong and Aldrin. Collins boarded Apollo 11's command module, the Columbia, and remained in orbit around the moon. Armstrong and Aldrin boarded the lunar module, the Eagle, to go to the moon's surface.
4. "That's one small step for a man, one giant leap for mankind," said Armstrong.
5. 21 hours, 36 minutes.
6. Planted a U.S. flag on the surface, took photographs, collected 47 pounds of moon rocks and dust.
7. A commemorative plaque that read - Here Men from the Planet Earth; First Set Foot Upon the Moon; July 1969 A.D.; We Came in Peace for All Mankind
8. About 30 pounds.

Local Consult Schedule



Local Consult Meeting Dates/ Locations

Monday, Aug. 19

◆ **SALINA** ◆

1:30 p.m. - 4:30 p.m.
Kansas Highway Patrol Academy
2025 East Iron

Tuesday, Aug. 20

◆ **HUTCHINSON** ◆

9 a.m. – Noon
Atrium Hotel & Conference Center
1400 North Lorraine St.

Wednesday, Aug. 21

◆ **INDEPENDENCE** ◆

9 a.m. – Noon
Independence Civic Center
410 N. Penn Ave.

Thursday, Aug. 22

◆ **OVERLAND PARK** ◆

9 a.m. – Noon
Matt Ross Community Center
8101 Marty Street

Monday, Aug. 26

◆ **TOPEKA** ◆

1:30 p.m. – 4:30 p.m.
Capital Plaza
1717 SW Topeka Blvd

Tuesday, Aug. 27

◆ **WICHITA** ◆

9 a.m. – Noon
Eugene Hughes Metroplex
5015 East 29th Street N

Wednesday, Aug. 28

◆ **DODGE CITY** ◆

9 a.m. – Noon
Dodge House Convention Center
2409 W. Wyatt Earp Blvd.

Thursday, Aug. 29

◆ **HAYS** ◆

9 a.m. – Noon
Fort Hays State Memorial Union
700 College Drive

By Jeanny Sharp, Headquarters

Planning for the future: Transportation Local Consult meetings are taking place across the state in August.

“These meetings are an important opportunity for stakeholders to share information about needed transportation projects,” said Secretary Julie Lorenz. “These projects will help shape the future of transportation in Kansas.”

Local consult meetings will be broken up in two parts:

New projects: During the first hour, KDOT would like to hear from stakeholders about new transportation projects that are needed. During the Joint Legislative Transportation Vision Task Force meetings held last fall, participants testified about project needs that totaled more than \$18 billion.

Scenario planning: In the second two hours, KDOT will work with all stakeholders to envision the future of Kansas by reviewing facts and trends, discussing risks and exploring alternative future possibilities.

Using scenario planning approaches, KDOT will examine long-term and emerging trends, how they could impact Kansas’ transportation system and what infrastructure investments can be made to help future-proof our infrastructure and cultivate prosperous, healthy communities for all Kansans.

Scenario planning is at the forefront of national planning practices and these discussions will provide valuable information for the next Kansas Long Range Transportation Plan (LRTP).

There will be another round of Local Consult meetings later this fall. At those meetings, KDOT will build upon the discussions from this summer to determine regional priorities for future transportation investments.

“Collaboration is at the heart of this process – just as it was for the development of the T-WORKS program,” Lorenz said. “But a lot has changed in the last 10 years, and it’s time for the next transportation program to take full advantage of accelerating rate of change in technology and growing interest in transit, aviation, rail, broadband and economic vitality.”

KDOT will be visiting Salina, Hutchinson, Independence, Overland Park, Topeka, Wichita, Dodge City and Hays during the first rounds of meetings.

Transportation roundtable discussion



Congresswoman Sharice Davids, seated under screen, invited numerous people, including Secretary Julie Lorenz, to participate in Transportation and Infrastructure Roundtable on July 13 in Overland Park.

By Joel Skelley, Headquarters

Transportation roundtable discussion:

Congresswoman Sharice Davids hosted a Transportation and Infrastructure Roundtable on July 13 in Overland Park with Secretary Julie Lorenz and others participating.

According to a Kansas City Star article, Congresswoman Davids focused on several legislative priorities, including U.S. 69 expansion.

“Representative Davids’ complete focus is on serving the people of Kansas’ Third District. That’s why she spent the weekend in Kansas with fellow Transportation and Infrastructure Committee members advocating for the infrastructure needs of our region, like expanding U.S. 69,” said spokeswoman Johanna Warshaw in the

newspaper article.

Others participating in the infrastructure roundtable included two other Congressmen on the House Transportation & Infrastructure Committee; Chairman Peter DeFazio (Congressman for the State of Oregon 4th District) and Congressman Rick Larsen (State of Washington 2nd District). There were also several local Kansas City metro area infrastructure stakeholders that participated in the roundtable discussion.

The Congressional delegation, Secretary Lorenz and a portion of local stakeholders took a short bus tour of U.S. 69 in addition to the roundtable event where the discussion centered around transportation infrastructure, water system infrastructure and workforce needs.

U.S. 169 open to traffic

Traffic is again flowing on U.S. 169 between Iola and Chanute. In the spring of 2018 KDOT closed a seven-mile section between two Allen County roads, Minnesota and Delaware, to reconstruct the pavement on the driving surface and interchange ramps. Motorists were pleased with the announcement of the highway’s reopening on June 27. Emery Sapp & Sons, Inc., was the primary contractor on the \$16.3 million project. Aaron Frit’s road squad and John Culbertson’s bridge squad designed the project. Photo by Priscilla Petersen, District Four



Flooding, flooding, go away



The **top left** photo shows damage to K-4 from the flooding on July 4. The **top right and left** photos show crews making repairs. **Below**, is the highway after the quick repairs were finished. Photos by Ashley Tammen, District Two

By Ashley Tammen, District Two

Flooding, flooding, go away: KDOT crews in north central Kansas were busy over the Fourth of July holiday weekend and following work days due to extremely heavy rains around Gypsum.

On July 4, the Gypsum area had eight to 10 inches of rain in a very short amount of time. Crews were called out to work all day as highways had to be temporarily closed due to high waters and safety. As the high waters receded, it was evident that large pieces of the road surface and the shoulders of K-4 around Gypsum had been washed out.

On July 5, Area One Superintendent Brad Anderson quickly put together a crew of available workers from KDOT offices in Clay Center, Junction City and Abilene to work on K-4 south of Gypsum and crew members from the Lindsborg office worked on K-4 west of Gypsum.

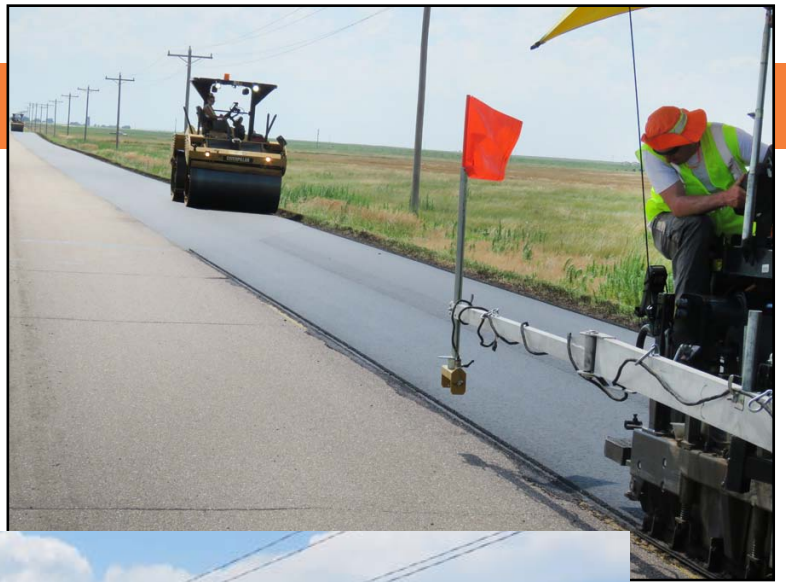


Crews worked all day to make the necessary repairs to get the road opened again that day.

Crew members resumed work the week of July 8 to make more repairs that were needed. An asphalt overlay was placed on K-4 south of Gypsum and the roadway received new paint stripes.

K-190 resurfacing

Bettis Asphalt completed a HIR resurfacing project on K-190 in Haskell and Seward counties recently. The project began at the east city limits of Satanta in Haskell County and extended to the K-190/U.S. 83 intersection in Seward County. The HIR will be followed by a chip seal which is expected to start on Monday, July 22. The project covered almost 10 miles at an approximate cost of \$820,000. Photos by Lisa Knoll, District Six



Sinkhole near K-7



Aggravated by excessive moisture from recent rains, in late June a 10-by-10-foot sinkhole appeared on the K-7 right-of-way between Cherokee and Columbus. The Surface Mining Section of the Kansas Department of Health and Environment investigated the void and then backfilled it with rock, concluding that it was a vertical shaft from a long-abandoned coal mine. All the mine voids under the K-7 roadway were grouted and filled when KDOT reconstructed this section during 2017-18. According to KDOT Regional Geologist Denny Martin, voids under the right-of-way remain, but the highway's driving surface is safe. Photos by Denny Martin, District Four

How can you make a difference?

Pay extra attention
Avoid distractions
Obey work zone signage

Exercise extreme caution, watch for workers,

Work zone safety

Below, Engineering Associate Ravi Balpalli and other KDOT employees focus on efforts on the U.S. 69 bridge at 151st Street in Overland Park.

The Johnson County Sheriff's Office teamed up with KDOT Public Affairs to join forces and create a work zone awareness video to encourage safe driving through Kansas City work zones. Numerous work zones are under way in the Kansas City Metro Area. The photos above and at right are from the video that is available to view on KDOT's Northeast Kansas Facebook page and the Kansas City Twitter page.



partner with the Kansas Department of Transportation

Parking lot overlay



The Ulysses Subarea, with help from Sam Lowry, Hugoton Subarea Supervisor, completed an overlay of Subarea parking lot and the street accessing the parking lot last week. The crew treated the areas with oil and filled potholes first. Then they sprayed a second layer of oil on areas and covered with a hot mix-cold lay asphalt, which was packed down and smoothed out using the roller. Photo by Frank Burns, District Six

Kansas Transportation

Monday, July 15

Motoring Monday - Greensburg's Big Well Museum: cool in more ways than one

By Tim Potter, District Five

What better place to cool off on a hot day than a place that bills itself as the world's largest hand-dug well?

The Big Well, with a spiral staircase, goes 109 feet deep and stretches 32 feet wide in the town of Greensburg. That's off U.S. 54 in Kiowa County, in south-central Kansas. Workers completed the well in 1888, using picks and shovels, lining the walls with stone. It's one of the Eight Wonders of Kansas.

The well provided drinking water for Greensburg until 1932 and became a tourist attraction in 1937.

Since the 1970s, the well has been recognized as a national museum and a water works landmark.

Now, the well is operated by the City of Greensburg and is known as the Big Well Museum & Visitors Information Center. The tourist site was greatly improved a few years after a tornado devastated Greensburg in 2007.

The attraction is open from 9 a.m. to 6 p.m. Monday through Saturday and 1 to 6 p.m. on Sunday. Cost: \$8 for adults; \$6 for seniors 60 and older, military and children ages 5 to 12; a family pass, for two adults and children under 18, is \$25. For more information, go to www.bigwell.org.

Top photo: The Big Well Museum is in Greensburg, off U.S. 54, in south-central Kansas. It was greatly improved after a devastating tornado struck Greensburg in 2007. **Middle photo:** The well has been a tourist attraction since the late 1930s.

Bottom photo: In the late 1880s, workers lined the well with stone. Photos courtesy of

See more stories on the Kansas Transportation blog at [http://](http://kansastransportation.blogspot.com/)

kansastransportation.blogspot.com/



U.S. 160 work continues

Below, workers construct a culvert on the south side of the U.S. 169/160 interchange project. Photos by Priscilla Petersen



By early August, U.S. 160 traffic will be placed on the 'shoofly' detour under construction north of the U.S. 169/160 interchange project in Montgomery County. According to KDOT Inspector Kelly Wilson, in mid-July paving should start on the westbound U.S. 160 and southbound U.S. 169 ramps. Two-way traffic also will be switched to the southbound lanes of U.S. 169 for reconstruction of the northbound lanes. Kings Construction Co. is the contractor on the \$12 million project. When construction is finished in the summer 2020, the junction will be a grade-separated interchange with U.S. 160 traffic carried over U.S. 169. Steven Bass' road squad and Brad Rognlie's bridge squad designed the project.



Scenic

Scenic photos from KDOT's Neil Croxton - below, a Flint Hills stream in extreme southern Riley County, and at right, new growth and pine cone forming on an Austrian pine in southwest Clay County.



K-96 milling

Crews have completed a 12-mile mill and overlay on K-96 in Lane County with striping scheduled for next week. The project stretched from First Street in Dighton east to the Lane/Ness county line. APAC was the contractor on this \$1.4 million project which started June 26. Photo by Lisa Knoll, District Six



Kudos

An article in the Richmond, Va., magazine, "Richmondmag," features bicycle rider Brantley Tyndall and his experiences in the 4-191-mile Trans Am Bike Race that took place last month. He had high praise for his time in Kansas. Below is part of the story, to see the full article, click [here](#).

In Kansas, he noted, the state had undertaken a public service campaign to make motorists aware that the race participants were in the state, and had encouraged Kansans to be welcoming to the 100 riders. Tyndall says the only two rider deaths in previous races had occurred in Kansas and that he was initially apprehensive about riding there. But his fears proved unfounded. He said he never felt unsafe during that portion of the course, as drivers were "especially gracious."

It wasn't just the motorists: In Newton, Kansas, about halfway along the course, he was greeted by four "trail angels," who came out in support with dinner and to hear his stories.

The public service effort in Kansas could serve as a model for other states. "I have to believe that made a major difference," he says.

Motorist assist

Motorist assist: KDOT has teamed up with its counterparts in Missouri to initiate a pilot program in four Kansas metropolitan areas that alerts drivers when motorist assist vehicles are nearby.

Drivers in Kansas City, Wichita, Salina and Topeka can receive digital alerts via the Waze mobile navigation app when they are approaching Kansas Motorist Assist Program vehicles or, in Missouri, the Emergency Response program vehicles. A total of 19 Kansas vehicles and 12 Missouri vehicles are using the technology.

Collisions and struck-by incidents are common nationwide and rank as leading causes of death for firefighters and police officers as well as other first responders like EMS, motorist assistance vehicles, tow truck operators and highway maintenance workers.

"We're excited to adopt this technology to make our roads safer for both our emergency responders and highway motorists," said Shari Hilliard, Intelligent Transportation Systems (ITS) Engineer for KDOT.



Travelers in Kansas City, Wichita, Topeka and Salina will have another way to receive digital alerts with a new pilot program.

The Kansas Motorist Assist Program is funded by KDOT and administered by the Kansas Highway Patrol.