

Translines EXPRESS

Feb. 20, 2019

T-WORKS funding

Governor outlines

T-WORKS projects: Gov. Laura Kelly joined Secretary Julie Lorenz to announce KDOT's plans to invest \$160 million in revenue that is included in the Governor's FY 2020 budget for transportation.

The \$160 million comes from reducing the amount of money transferred out of the State Highway Fund. Since 2011, more than \$2 billion has been transferred out of the State Highway Fund, causing costly project delays, reduced highway preservation work, a decline in the health of our highway system and an inability to plan for future projects.

"With this \$160 million in revenue, we will strengthen our highway system, take steps towards completing T-WORKS, and provide resources to communities across the state," said Gov. Kelly. "These are important steps forward, but to be clear, we still have a long way to go in order to get our transportation system where it should be."

To see the full release with a breakdown of projects, a FY 2020 budget enhancements overview and action plan, click [here](#).

These investments are aligned with recommendations from the Joint Legislative Transportation Vision Task Force that met last year.

"We look forward to working with communities and our partners across the state to deliver these investments," said Secretary Lorenz.

"We know that funding reductions have impacted the health of our system. I'm so pleased to work with Gov. Kelly to take this important step forward to achieving the goals the task force laid out and improving our state's transportation system."

To see the Executive Summary of the Joint Legislative Transportation Vision Task Force, click [here](#).



Top: Gov. Laura Kelly and Secretary Julie Lorenz announce plans to invest \$160 million in revenue included in the FY 2020 budget. Above: Gov. Kelly welcomes Economic Lifelines Interim Director Ed DeSoignie to the news conference. Left: Secretary Lorenz outlines the funding plans.

Deputy Secretary

Deputy Secretary: Lindsey Douglas has been named Deputy Secretary for KDOT. She has worked with the Kansas Legislature for 15 years, representing both the public and private sectors. Douglas has worked in transportation policy for eight years. Four of those years were spent at KDOT, first as Legislative Liaison working on the passage of T-WORKS, and then as the Chief of the Office of



Lindsey Douglas

Governmental and External Affairs. Most recently Douglas served as the Senior Director of Public Affairs for Union Pacific Railroad in Kansas, Missouri and Arizona. Douglas will manage the Division of Policy and the Division of Fiscal and Asset Management. Douglas lives in Overland Park with her husband Jon and 8-year old son, Porter.

District One

Damaged vehicles: Five KDOT plow trucks were hit in the Kansas City metro area during the snow storm last week. Three trucks were hit on Feb. 15 in Johnson County (with one being hit twice) and two were hit in Wyandotte County on Feb. 16. The good news is no injuries were reported, the bad news is in that during 24-hour timeframe, 12.5 percent of the KDOT trucks in the metro area were out of commission at one time or another.

KDOT Superintendent Drake Jennings spoke to news stations about the incidents, saying that the plows were struck when people tried to pass them in lanes that had not been plowed yet, and one of the plow drivers was hit twice.

"About two and a half hours later, he was northbound at Johnson Drive and he got hit again," Jennings said. "That driver didn't stop. That driver kept right on going."

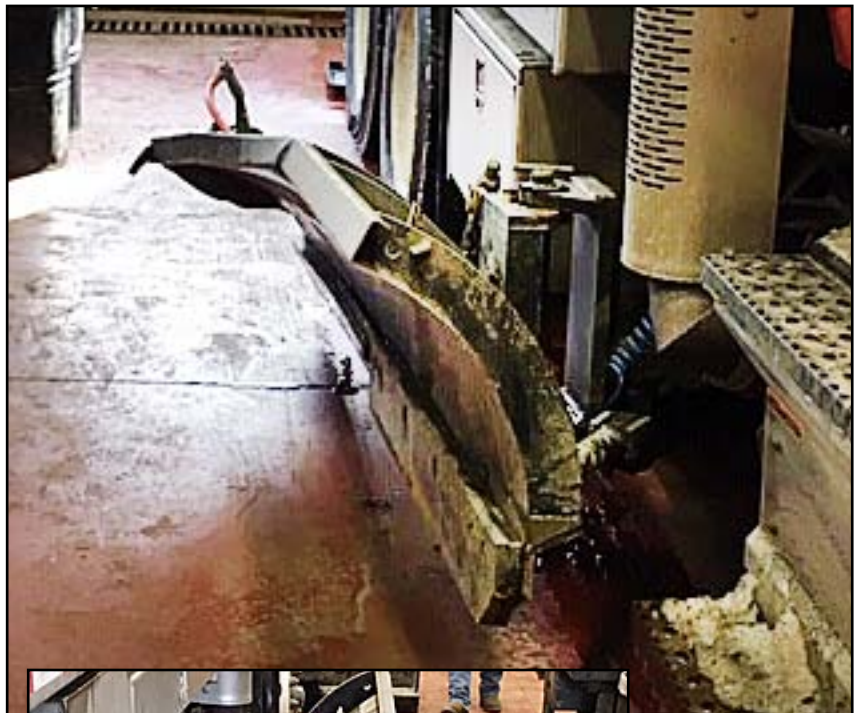
Damage to the snow plow can happen to the front plow or the salt spreader on the back, but most often happens to the wing plow on the side.

"They are trying to pass us," Jennings said. "Every time you try to pass us it never turns out good."

"I'm short staffed and I'm short on trucks, so I need every available truck that I have," Jennings said. "So, when one of my trucks gets hit, it takes it out of service. The accidents today, those trucks they sat idle on the shoulder for 45 minutes to an hour."

Repairs were made to the trucks on Feb. 16 to prepare for more snow and ice that was predicted late that afternoon and evening. Another storm moved in yesterday as well. To see an interview with Jennings on KCTV 5, click [here](#).

Information from KDOT and KCTV 5 news story from Feb. 16. Link is to KCTV 5 news story that aired on Feb. 15.



Photos from two different angles show the damage sustained on this wing plow after it was hit on Feb. 15 in Johnson County. Repairs were made as quickly as possible, but the truck was out of commission for a while.

KSPE Award

KSPE award: Catherine Patrick has been selected as the Government Engineer of the Year for 2018-19 by the Topeka Chapter of the Kansas Society of Professional Engineers. The award is given to a registered professional engineer, working in government, in recognition of his/her contributions to the engineering profession.



Catherine Patrick

Patrick began her KDOT career in 1989 and served in several positions in District One. She was named the Director of Operations in 2007 and has served as the State Transportation Engineer since 2016. The award will be presented during the Engineers Week Luncheon on Feb. 28 in Topeka.

Trivia!

Grand Canyon

1. When was the Grand Canyon named a National Park?
2. How long is the Grand Canyon?
3. At its widest point, how wide is it?
4. What is the deepest canyon in the world?
5. What is the name of the town in the Grand Canyon?
6. What river runs through it?
7. Who was the first person to explore the Grand Canyon?

District Two/Kudos

KHP Trooper Ben Gardner stopped at the KDOT office in Salina to get gas on the morning of Feb. 7. While there, he saw Highway Maintenance Supervisor Mike Hahn who had been clearing the roads overnight. Gardner encouraged him to stay warm, but Hahn said he was wrapping up his 12-hour shift and heading home. Gardner wrote in his Twitter comments, "As much of Kansas was asleep, so many KDOT employees were out treating the roads for this morning's travelers." The two then thanked each other for their service and took a quick photo.



TRIVIA ANSWERS

1. Feb. 26, 1919.
2. 277 miles.
3. 18 miles.
4. Yarlung Tsangpo Grand Canyon in Tibet at 17,567 feet. The Grand Canyon is 6,093 feet deep.
5. Supai Village, with the Havasupai Indian Reservation. It is inaccessible by road and has a population of just more than 200. Mail is delivered by pack mule.
6. The Colorado River.
7. Major John Wesley in 1869.

District Four



During the first week of February, a storm system spread freezing drizzle and snow throughout the region. Icy highways and bridges led to numerous cancellations and made travel hazardous. The ice was stubborn at some locations, such as U.S. 400 in Montgomery County (above), where plow operators made numerous passes to clear the surface. Alex Lovell (at right), an Equipment Operator at the Independence office, loads salt and aggregate onto his truck from the materials storage facility on U.S. 169. It was his fourth trip to replenish materials in one long day of clearing the highways.



Kudos

Below are just a few of the many kudos that have been sent recently to all six District offices and HQ.

- ♦ I want to thank all of you for taking such great care of our roads. I know I want to be home when it is nasty outside and I know you do too, thank you for getting out there. we appreciate it. Be safe
- ♦ Thank you for doing what you do to keep us safe on the roads.
- ♦ Be safe out there. Thank you for keeping the roads as safe as possible!
- ♦ KDOT does an amazing job with our roads! Thank you!
- ♦ I am emailing in regards to the GREAT job that KDOT has done keeping our interstates safe this winter. I-70, mile post 266 to 250, and I-135 S to mile post 88 is traveled daily by my family. Thank so much for all the time & effort the roads crews have put in.
- ♦ Thankful for all you are doing to keeps roads clear and safe all year around, and especially this crazy winter.
- ♦ Thank you for all you do to keep us safe! Now If drivers would only use common sense!!
- ♦ Thanks to all KDOT employees and especially to those who answer the call to work late at night, holidays and weekends to keep our roads driveable in bad weather.
- ♦ Special shoutout to @NWKansasKDOT and @SCKansasKDOT for being out in the snow plows and clearing the highways, making them as clear as they can possibly be!! Your work along with all the other crews doesn't go unappreciated!!!
- ♦ Thanks for what you do, if it wasn't for you I wouldn't be able to get to work on time
- ♦ Be safe today thank you for the hard work
- ♦ Thank you for all you do to keep us safe
- ♦ Thanks for all of your long hours and hard work to help us all out!
- ♦ Thank you all from law enforcement to road crew. Your loved more you all know but please be careful go home safety to your families. Thanks for keeping us safe. Know I am praying constantly for safety of all you. Gods on all your side has hedge of protection that is prayed by many for all you daily and nightly..thks again.

Snow Storm



These photos show the storm moving in south of Harper on K-14 on Feb. 19 at 12:13 p.m. (top) and then again at 3:12 p.m. (above).



Donnie Burkholder, Equipment Operator Senior in Salina, stops to refuel and clean off the truck as well as the sign on the back of the truck during his shift on Feb. 19.

A plow truck clears K-96 west of Mount Hope about 5 p.m. on Feb. 19.



These photos show the storm moving in on Feb. 19 along two stretches of K-140 in Saline County at 3:45 p.m. (left) and then at 4:30 p.m. (right).

District Six

Expansion joint repair: The District Six bridge crew, along with the Syracuse and Lakin Subarea crews, took advantage of warmer weather on Feb. 13 and 14 to repair the expansion joint on the K-27 bridge approximately one mile south of Syracuse. The expansion joint allows the bridge's concrete to contract and expand with changes in temperature, prolonging the life of the concrete and the bridge. In the case of this bridge, the concrete below the expansion joint had deteriorated and had to be replaced. Once the concrete cures, the expansion joint will be put back in place and the bridge will re-open to normal traffic by the end of this week.



Ron Vanover and Jerry Stevenson from the Lakin Subarea set up traffic control, which reduced the bridge to one lane for approximately eight days.



Above, Landon Baier from the District Bridge Crew removes debris from beneath the expansion joint. Below, Justin Mead measures for the concrete form.



Shannon Becker and Juan Gaytan-Zavala cut metal sheeting to build the concrete form using two-inch by four-inch pieces of wood and corrugated metal sheeting.



The bridge crew places concrete to support the expansion joint.

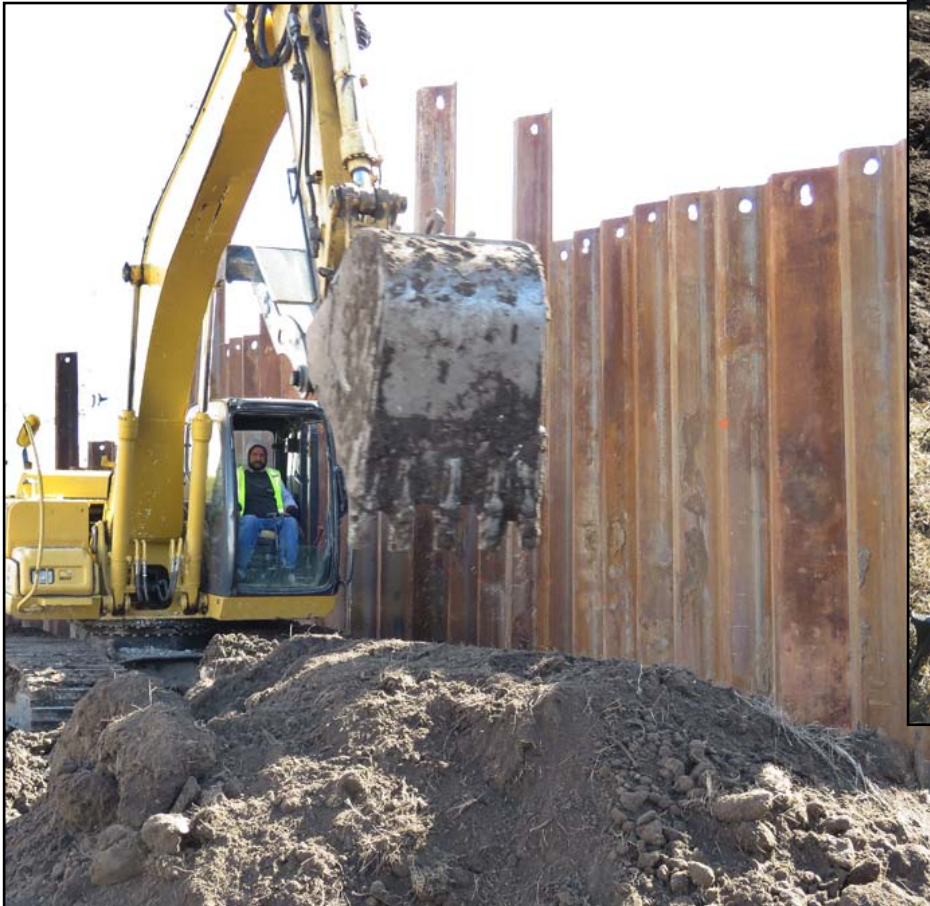
District Four

Among the four delayed T-WORKS projects that are proposed for construction in the Governor's budget, announced last week, is a nine-mile modernization project that will widen the two-lane U.S. 169 from Welda north to Garnett. The cost is estimated at \$25.6 million. Steven Bass' road squad and Shawn Schwensen's bridge squad designed the project.



District Six

Bryant & Bryant Construction of Halstead has begun a \$1.1 million project in Ness City that includes grading, storm water drainage improvements and resurfacing of K-96 from 7th Street to School Street. Steel sheet piling has been installed along the south side of the excavation area to provide support for the railroad track that runs parallel to the project. This project was developed through the Bureau of Local Projects.



At left, crews are working to install underground storm sewer pipe to alleviate drainage issues in the area. Above, a laser level is used to install pipes.

Kansas Transportation

Tuesday, Feb. 12

KDOT awards \$8.5 million in Transportation Alternatives projects



The Transportation Alternatives Program helps fund facilities such as bike and pedestrian paths and Safe Routes to School.

Transportation Alternatives projects: KDOT has selected 23 projects and awarded \$8.5 million in its Transportation Alternatives (TA) Program for FFY 2020.

Eligible projects under this federal program include facilities for pedestrians and bicycles; scenic or historical highway programs; landscaping and scenic beautification; historic preservation of transportation facilities; conversion of abandoned railway corridors to trails; control or removal of outdoor advertising; archaeological planning and research related to transportation; and the Safe Routes to School program.

KDOT received 46 applications from eligible project sponsors requesting nearly \$36.9 million in federal funds.

“We were happy to see so many quality applications from across the state this year. This proves how popular the TA program is and

how important these types of projects are to Kansas communities,” said Matt Messina, KDOT Transportation Alternatives Program Coordinator. “The main goals of the TA program are to help provide communities with more transportation options and to preserve or improve what they already have, and that’s what these projects will do.”

KDOT reviews and evaluates each application and makes selections based on criteria developed using input from various internal departments and external partners, such as safety and network improvements, cost estimates, project readiness, public support and other factors such as geography and funding distribution. All project sponsors are required to provide at least 20 percent of the cost as a local cash match and are 100 percent responsible for non-participating items.

For a full list of the projects, click [here](#).

See more stories on the Kansas Transportation blog at <http://kansastransportation.blogspot.com/>

Have an idea for a news brief or picture that could be featured in an upcoming edition of Translines Express?

Please e-mail your suggestions to Kim.stich@ks.gov

District Six

Southwest Kansas is no stranger to oversize and super loads. But this super load definitely left an impression on KDOT crews and many communities as it was re-routed through several smaller communities on Feb. 13-14. The load weighed in at 1.3 million pounds, was 365 feet long and 24 feet wide and was re-routed due to construction on U.S. 83. (Front view at right, side view below.)



KTA

KTA has awarded contracts on two upcoming bridge projects. One project will increase the vertical clearance of multiple bridges crossing across the Turnpike. The second will rehabilitate a bridge five miles north of the Matfield Green Service Area. Learn more in the latest news release by clicking [here](#).

Contracts Awarded



In Memory

Condolences to the family and friends of retiree Theodore "Ted" Anderson who passed away on Feb. 12 in Topeka. He retired in 1988 after 35 years of service. Anderson worked in the chemistry section of the Bureau of Materials and Research.

Crazy Bowl



Six teams participated in the annual Employees' Council Crazy Bowl event on Feb. 10 in Topeka. Teams bowl two regular games, but during the third game, teams change it up and bowl 'crazy' each frame.

KTA Design Contest

The KTA announced its fourth annual design contest as part of National Work Zone Awareness Week activities that will take place in Kansas.

This contest is open to students across the state in grades 8-12 to create a design about work zone safety. The winning submission will be featured in VYPE Magazine and the winner will receive a \$200 gift certificate.

Full rules and more details are online at www.ksturnpike.com/contests.

2019 NATIONAL WORK



ZONE AWARENESS WEEK

Designcontest



KTA