

Translines EXPRESS

Oct. 31, 2018

Eisenhower Statue



An unveiling ceremony of the President Dwight D. Eisenhower statue took place on Oct. 22 at the Capitol. Gov. Jeff Colyer and members of Eisenhower's family attended as well as retired Lt. Col. Eliot Potter who served during World War II (seen at far right in photo at right).



IT Service Desk

New IT Service Desk starts Nov. 8: The way you report technical issues or request technical support is changing. Effective Thursday, Nov. 8, you will no longer directly contact the KDOT Help Desk (785-296-0315). Instead, you will contact the Executive Branch IT (EBIT) Service Desk (785-296-4999 or 1-833-765-2001).

This new service will provide a 24/7 capability for users to call or email

with requests or incidents. Soon, the agency will have an online portal where users can directly enter their tickets.

Service Desk staff will engage with you to record the incident/request, provide resolution to the issues they

can and quickly route any other issues directly to KDOT support staff. Before KDOT support staff can work your incident or request, a ticket must be created with the EBIT Service Desk.

Calls and emails to the current KDOT Help Desk will

be forwarded to the EBIT Service Desk on Nov. 8. Don't forget, you can reset your own password by using the KDOT Self-

Current Contact
KDOT Help Desk
785-296-0315
KDOT#IT.Servicedesk@ks.gov

Future Contact - As of Nov. 8
Service Desk Contact
785-296-4999 or 1-833-765-2001
EBITSM@ks.gov

Service Password Management System, <https://kpass.ksdot.org/>. This may prevent unnecessary calls to the Service Desk and allow you to get back into your workstation more quickly. Please note that you can only change your password once in a 24-hour period.

Trivia!

Happy Halloween!



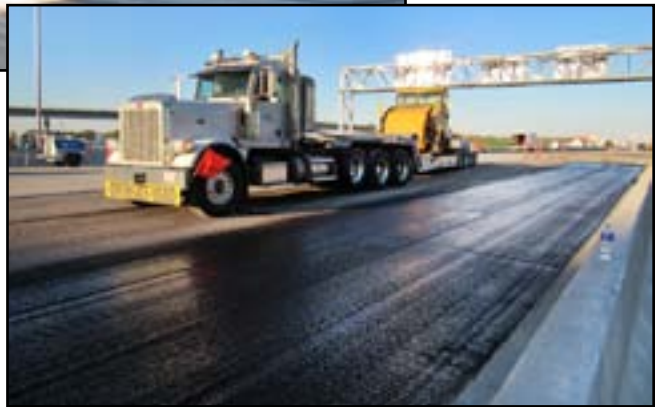
Pumpkins

1. How big was the largest pumpkin pie ever baked?
2. The tradition of carving jack-o-lanterns began in what country?
3. What were used at that time to be carved into jack-o-lanterns?
4. Pumpkins are grown on every continent except this one.
5. This town calls itself the "Pumpkin Capital of the World."
6. On average, how many seeds does a pumpkin have?
7. According to the American Pie Council, what is America's favorite pie?

Wichita



U.S. 54 under I-235 and I-235 over U.S. 54 was closed to traffic from Oct. 19-21.



The closure allowed contractors to pour four bridge approaches, mill and overlay asphalt lanes, apply permanent pavement markings, paint bridge columns, apply masonry coatings to bridges, install overhead truss signs and remove sub-deck and overhang brackets from a bridge. Thomas Rhoads' road squad and Mark Hurt's bridge squad designed the project.



TRIVIA ANSWERS

1. It weighed 3,699 pounds and was baked in 2010 in New Bremen, Ohio.
2. Ireland
3. Turnips or potatoes.
4. Antarctica.
5. Morton, Ill.
6. About 500.
7. Apple is number one at 19 percent. But pumpkin is second at 13 percent.

District Three

Crews are making progress on a mill and overlay project along a 15-mile portion of I-70 in Ellis County. Project work consists of a two-inch cold mill, two-inch HMA inlay and 1.5-inch HMA overlay on both the east and westbound lanes beginning at exit 159 at Hays (U.S. 183 junction) and ending at the Russell County line. Work began in July and is expected to be completed in December, weather permitting. Venture Corporation is the primary contractor for the project with a total contract cost of \$7.8 million. Kris Norton's road squad designed the project.



District Five



Above, a concrete grooving machine does its magic on a bridge on westbound U.S. 50 over I-135 in Harvey County. The piece of equipment grinds in grooves using a diamond blade on the bridge deck after the concrete is dry. Grooves in the past often were made when the concrete was still wet. At right, Engineering Technician Senior Chris Hall inspects grooves to make sure they meet specifications.



Traffic Incident Management



First responders participate in Traffic Incident Management Training in Wichita.

Being prepared: First responders from Sedgwick County EMS, Goddard Police Department, Wichita Fire Department, Sedgwick County Public Works, KHP Motorist Assist, KTA and KDOT maintenance crews attended Traffic Incident Management training at the Sedgwick County Public Safety Building, home of the WICHway traffic management center on Monday, Oct. 29. The training shares best practices in responding to,

processing and removing traffic incidents as safely and quickly as possible. It is a planned and coordinated effort with goals to improve incident scene safety, inform other drivers of the situation, prevent secondary crashes resulting from congested traffic and return traffic flow to normal.

Nearly 900 first responders in the Wichita area have attended the training plus more than 4,000 from across Kansas.

KTA



Paving the westbound lanes of I-70/KTA continued near the East Topeka toll plaza and is expected to continue this week. To find out more about the construction projects along the Turnpike, each month KTA publishes a construction update that highlights each project's progress - check it out [here](#).

Put the Brakes on Fatalities Day

As part of Teen Driver Safety Week, KTA presented the three winning Put the Brakes on Fatalities Day video contest winners their prizes. They included Andrew Marshall Tabb from Shawnee Mission West (right), students from Lawrence High School (far right) and students from Eudora High School (below). To see their winning videos, click [here](#) and to read the news release, click [here](#).



Poster contest prize presentations - at right, Altamont Subarea Supervisor Kevin Crain presents Brayden Myers his prizes at Parsons Middle School. Below, Finley Maloney of Kingman poses with her new bicycle. Below right, Trooper Ben Gardner talks to a group of students at Solomon Elementary School during the presentation for poster contest winner Kierstyn Coup.



40-Years of Service



KDOT employees were honored for 40 years of state service in Fiscal Year 2018 at the Governor's Pin Ceremony on Oct. 22 at the Capitol. They include, from left to right, Steve Kooser, Engineering Technician Specialist in the Bureau of Road Design; Kathryn Zeckser, Applications Developer III in the Office of Information Technology Services; Larry Thompson, Director of Operations; Darrel Kahle, Engineering Technician in the Bureau of Road Design; Billy Wilson, Highway Maintenance Supervisor in the Strong City Subarea; and Rodney Howard, Highway Maintenance Supervisor in Mankato. At right is Dorothy Straney, Engineering Technician in the Regional Materials office in Kansas City with the Bureau of Construction & Materials. She missed the group photo, so her photo with Gov. Jeff Colyer is being used.

Wichita

At the request of the U.S. Secret Service, the Wichita Area Crew provided protective concrete barriers during a recent visit by Vice President Pence to the city on Oct. 18 and 19.



Kansas Transportation

#IAMKDOT

Jetmore Equipment Operator Senior Ron Edwards has experienced a lot during his 47 years with KDOT. In fact, he's probably forgotten more about KDOT than most people remember and plowed more snow than most people see in a lifetime. Always willing to help others, he has led the way through the snow to the hospital when the ambulance couldn't get through, flagged traffic throughout the night because of the weather or a car crash and helped stranded motorists

change flat tires and jump start batteries. Known as a jack of all trades and the original "Mr. Fix It," Edwards can build or repair almost anything. This includes the gazebo at the Jetmore City Pool, which Edwards built and paid for himself in memory of his daughter, Heather, who passed away at 14. Edwards enjoys spending time with his family



including his wife, Rosanne, and daughters, Morgan and Madison. When not helping his daughters with do it yourself and home improvement projects, Edwards enjoys fishing and polka music. Do you know a KDOT worker that deserves recognition? Email Mallory.Goeke@KS.gov today to get started.

Scenic

KDOT's Neil Croxton took this photo of an old stone house in southern Jewell County.



KDOT Employee Council Holiday Ornament Order Form

2018

Year	Quantity	Cost	Total
2018		\$5.00	
2017		\$3.00	
2016		\$3.00	
2015		\$3.00	
2013		\$3.00	
Total enclosed			



Great Gift Ideas!

Please Print -

Name: _____

Address: _____

(Retirees only - home address)

Work phone: _____

How to Order:

Headquarters: Contact your Council Rep.

Districts/Retirees:

Mail form to -

Ruby Hilton,
ESOB - 13th Floor,
700 SW Harrison,
Topeka, KS 66603

Make checks payable to KDOT Employee Council

For more details, call Ruby at (785) 291-3980

----- Past Ornaments Still Available-----

2017



2016



2015



2013

