

Translines EXPRESS

Nov. 14, 2018

District Four



Koss Construction Company of Topeka, the contractor on the U.S. 69 expansion in Bourbon County, sent up a drone to take this aerial photo of concrete paving on the new lanes being added south of Fort Scott. The Bourbon County project covers six miles of U.S. 69 at a construction cost of \$21.8 million. Stephen Bass' road squad and Mark Hurt's bridge squad designed the project.

In Memory

Condolences to the family and friends of retiree Donald Blankley who passed away on Nov. 3 in Perkins, Okla. Blankley worked for the state for more than 37 years. He retired as an Engineering Technician at the Lawrence office in 1998.

Retirees

The following employees are retiring from KDOT in December.

District One

Robert Carrier Jr., Equipment Operator Senior, Eskridge

Blaine Smith, Engineering Technician, Topeka/Gage

District Five

Stanley Schwantes, Equipment Operator Senior, Winfield



***Have a safe and happy
Thanksgiving***

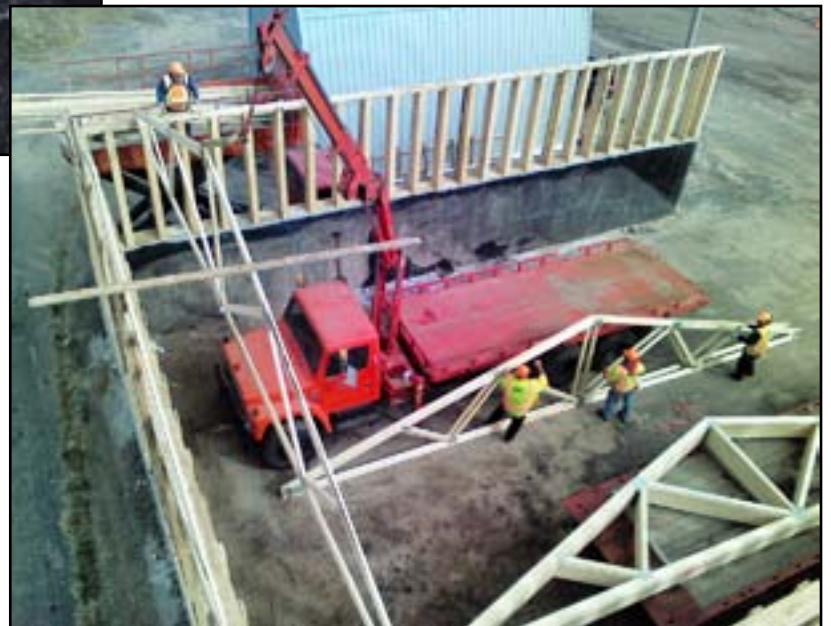
All state offices will be closed on
Thursday and Friday, Nov. 22 and 23.

Trivia!

“The Wizard of Oz”

1. What was the original title of the book “The Wizard of Oz?”
2. Who is the author?
3. When was the book first printed?
4. What did the author base the book on?
5. What year did the movie debut?
6. What does Dorothy say when she taps the heels of her ruby slippers?

District Six



The Dighton salt and sand shed and the loader shed, located at the K-4/K-23 junction in Lane County, sustained heavy damage during a June 19 thunderstorm. The Dighton crew, with assistance from the Scott City crew, made quick repairs to the loader shed, replacing the tarp in July. They began by removing the steel arches from the concrete bed and replaced those with a wood frame and trusses. Then they replaced the tarp with steel sheeting so it can better withstand the wind. The project should be completed just in time for winter.

TRIVIA ANSWERS

1. “From Kansas to Fairyland.”
2. L. Frank Baum.
3. May 17, 1900.
4. Living in South Dakota in the 1880s.
5. 1939.
6. “There’s no place like home.”

Kansas Transportation

Monday, Nov. 5

KanDrive: There's a hack for that

KanDrive.org is one of KDOT's year-round customer service products to help drivers plan their travel, which continuously updates road conditions, closures, construction and traffic-impacting incidents on Kansas highways. It's especially helpful during the winter, when a flurry of information and rapidly changing conditions, can be overwhelming.

"KanDrive is KDOT's traveler information gateway for Kansas and surrounding states," said Kevin Hennes, KDOT Applications Developer. "It provides an interactive map of Kansas roads, work zones and the ability to view highway cameras to see surface-related road conditions in real time on computer and mobile devices."

While road condition updates are often posted on KDOT's social media pages, they are not updated around the clock. KanDrive is the official source of highway travel information in Kansas and it has the most current and complete road condition



information available. The application is fed by several electronic sources from across the state and it updates in real time. "Please do not tweet, email or message KDOT when you need timely information on road closures, we cannot answer calls or emails around the clock, even during storms," said Laurie Arellano, KDOT Communications Director. "By the time we are

able to respond to your message, conditions may have changed significantly." Drivers can check KanDrive anytime from a computer or a phone and get the same information. Motorists are encouraged to check out the site in advance and become familiar with it before inclement weather occurs.

To see more stories on transportation topics, check out the regular posts on the Kansas Transportation blog at <http://kansastransportation.blogspot.com/>

KTA



Crews raised the bridge at MM 157 on I-335/KTA to increase the vertical clearance for commercial traffic.

TPIMS

Getting ready: TPIMS is a real-time commercial truck parking system designed to connect drivers to safe, available and legal parking spaces more quickly, reducing driver fatigue, unsafe parking and lost productivity. The program was funded by a \$25 million TIGER grant from the Mid America Association of State Transportation Officials. In partnership with seven regional states, KDOT helped secure funding to help make commercial truck transportation across the busiest commercial routes in the nation more efficient by reducing lost time and fuel consumption, potentially contributing millions of dollars to the U.S. economy. The project has been underway in the western part of the state for almost a year, and final testing is now taking place ahead of the planned implementation date of January 2019. Once fully deployed, TPIMS will connect drivers



Eric Strack with HNTB monitors data while testing data on the sign along westbound I-70 in Wabaunsee County.

to parking spots at more than 150 parking sites in eight states through signs, smart phone applications and traveler information websites.

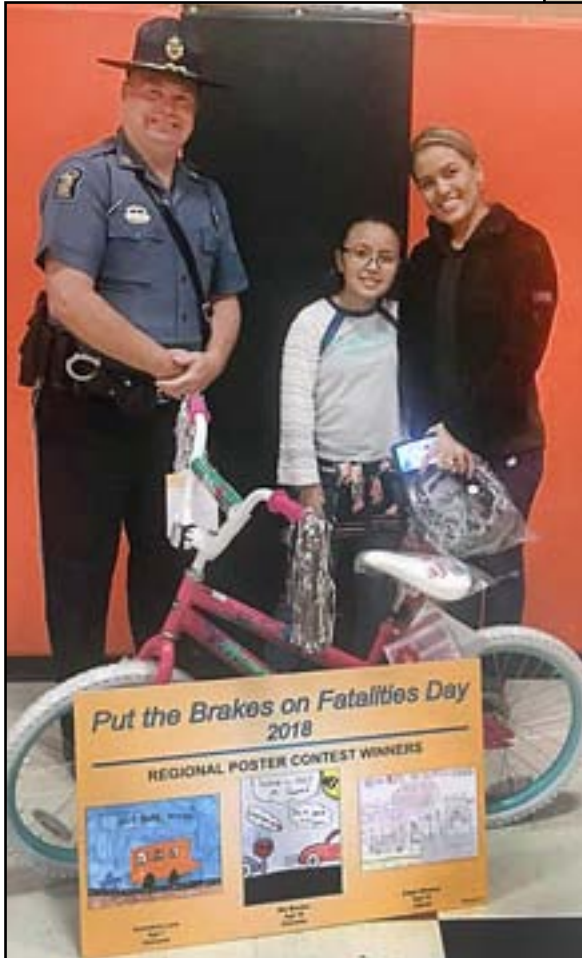
District Six

It may be getting colder outside, but crews continue to be busy mowing and maintaining the highways. At right, Roger Austin, Equipment Operator at Bucklin, mows the U.S. 54 shoulder at Bloom.



Put the Brakes on Fatalities Day

At right, three siblings were named as the northwest Kansas regional winners in the 2018 Put the Brakes on Fatalities Day poster contest. They are, from left to right, Conner Miller, Matthias Miller and Janessa Miller. They were honored at a presentation in October and are pictured with KHP Trooper Tod Hileman.



Above, Mia Montes, center, takes a photo with her mother and KHP Trooper Michael Racy at Holcomb Elementary School. She was a regional winner for southwest Kansas. At right, Hudson Barrett tries out his new bicycle with KHP Trooper Don Hughes after his presentation at Spring Hill Elementary School. He was a regional winner for northeast Kansas.



KTA

The East Topeka toll plaza has been converted to open road tolling. If you don't know how the new lanes work, learn more about it by watching a video by clicking [here](#), especially if you use the K-4 exit just west of the tolling area.

District Six

Workers brave the cold to complete a crack seal project on U.S. 400 in Ford. The project extends from the U.S. 283 junction to the Ford city limits.



Above, KDOT Engineering Technician Tim Torrez measures pavement cracks while monitoring the project. At left, Pavement Pros of McPherson employees saw and route the pavement cracks to open them. Later, loose material is removed and the cracks are filled.

Employees' Council



Employees look at the items displayed and also enjoy treats at the Employees' Council Holiday Reception and Artwalk on Nov. 8 in Topeka. The event took place earlier than usual to kick off the holiday season.



KDOT Employee Council Holiday Ornament Order Form

2018



Great Gift Ideas!

Year	Quantity	Cost	Total
2018		\$5.00	
2017		\$3.00	
2016		\$3.00	
2015		\$3.00	
2013		\$3.00	
Total enclosed			

Please Print -

Name: _____

Address: _____

_____ (Retirees only - home address)

Work phone: _____

How to Order:

Headquarters: Contact your Council Rep.

Districts/Retirees:

Mail form to -

Ruby Hilton,
ESOB - 13th Floor,
700 SW Harrison,
Topeka, KS 66603

Make checks payable to KDOT Employee Council

For more details, call Ruby at (785) 291-3980

----- Past Ornaments Still Available-----

2017



2016



2015



2013



Give the gift of KANSAS!



As a Kansas state employee, you receive an exclusive offer (up to 66 percent off retail price!) to subscribe to KANSAS! - the premier travel magazine of the Sunflower State.

Each issue of KANSAS! takes readers on a journey through engaging stories and vibrant photography - enjoy recipes, trip itineraries and more! PLUS, your gift subscription comes with an official 2019 KANSAS! calendar.

No need to stand in a long checkout line, just click [here](#) and fill out your giftee's information - we can even bill you in the new year.

For more information, please email andrea.etzel@ks.gov