

# Translines EXPRESS

June 27, 2018

## District Four



*A profusion of summer wildflowers can be seen along U.S. 400 west of Parsons. Also in this edition is a story and photos on KDOT's efforts to improve pollinators' habitats.*

## Highway Right of Way

**Signs not allowed on highway right of way:** Sign, sign, everywhere a sign. But not on KDOT right of way, where the only signs you should see are there for your safety and to help you get to your destination. As election season ramps up, KDOT reminds the public that all campaign signs are prohibited on highway right of way. This applies to all signs such as garage sale signs, business signs, etc. By law, all right of way on state highways is to be used exclusively for public highway purposes. Only regulatory, guide signs and warning signs are allowed on the state highway system. KDOT has jurisdiction over all interstate, Kansas and U.S. routes on the

state's 9,400-mile system.

When KDOT maintenance crews find political or business advertising on state right of way, the signs are removed immediately and taken to the closest KDOT Subarea office. The signs can be picked up by the owner with the agreement they will not be placed on state right of way again. All political campaign signs not picked up will be disposed of after the election. Political campaign advertising is allowed on private property bordering state right of way. But remember to first get permission from the property owner to place a sign on private property.

## Trivia!

### John Deere - part two

1. John Deere had a short career in another line of work. What was it?
2. When did John Deere launch its first line of bicycles?
3. During the Great Depression, the company did several things such as these to help farmers and employees.
4. When was the first turbocharged diesel engine introduced?
5. How many tractor models have there been over the course of the company history?

## District Six



*Wheat harvest was under way last week at Levens Farms along K-27 south of Syracuse and will continue throughout the state. For safety suggestions on driving near farm equipment, click [here](#)*

## TRIVIA ANSWERS

1. In 1837, he was elected Mayor of Moline, Ill., and served for two years.
2. In the 1890s.
3. They refused to repossess their farm equipment from farmers in debt. With business almost at a standstill, they were forced to lay off some workers and shorten hours, but it continued to cover the insurance for those laid off and lowered rent in company housing.
4. 1969.
5. There have been 596 tractor models.

## Retiree

*The following employees will retire in July.  
Headquarters*

**Cindy Cook**, Technology Support Consultant II-  
Hutchinson, Information Technology Services

**Have a safe and happy  
Fourth of July**

All state offices will be closed on  
Wednesday, July 4.

## District One



*Highway workers repair I-435 approach pavement at night along the I-435 corridor in Wyandotte County from the Missouri River to the Kansas River. Superior Bowen Asphalt Company of Kansas City, Mo., is the prime contractor on the \$8.36 million project. It is scheduled to be finished in October.*



## District Six

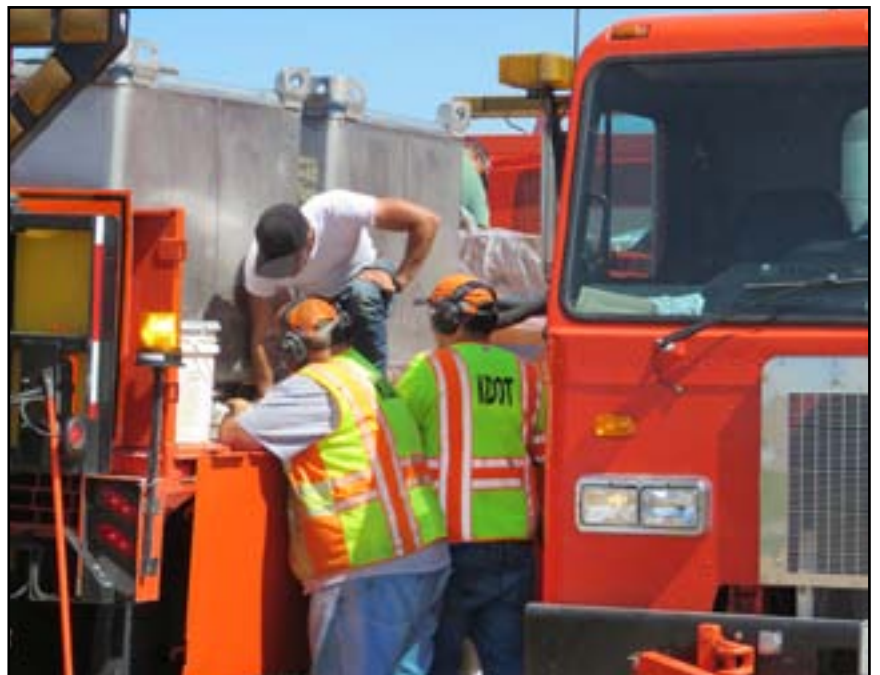
**Striping season:** It's once again striping season at KDOT. While other crews are busy with mowing, road, bridge and sign repair in the summer months, paint crews are focused on striping. According to Clay Adams, KDOT's Bureau Chief of Maintenance, KDOT repaints highway center and edge lines as needed. Need often depends on how much snow an area receives and if the lines are worn due to snow plows and weather. With around 9,400 center line miles and about 25,000 lane miles, there's a lot of painting to be done on Kansas highways. The District Six paint crew paints 16-25 miles/day depending on weather, travel time and equipment. They will paint approximately 550 center line miles and a little more than 1,000 edge line miles this year.



*Above, Ken Bowden, District Six Paint Crew Supervisor, drives the paint truck. Below, the District Six paint crew, including Logan Coghill (standing), Ken Bowden (standing), Ciro Chavez (kneeling) and Lorenzo Rivas-Avila (visible behind paint tanks), stops to reload the paint truck while painting edge lines on K-27 in Hamilton County. This requires the crew to reload the glass reflective beads and paint which must be mixed together to give the paint the reflective quality that makes it more visible at night. The crew can paint 16-17 miles of edge line before reloading.*



*Logan Coghill observes the paint wheel from the observation port at that back of the paint truck.*



## Kansas Transportation

Monday, June 25

### Motoring Mondays

If you travel Lincoln County in north central Kansas, keep your eye out for Jim Dickerman's "Open Range Zoo." For more than 25 years, Dickerman has been combining scrap metal, old farm equipment, car parts, animal bones and feathers, driftwood, limestone, antlers and just about anything else you could think of to create his magical creatures. He sees himself as rather passive in this process, letting the pieces he finds decide what kind of creature they want to be.

Since 2000, Dickerman, who lives in Lincoln County, has been creating his "Zoo." He asked friends and land owners if it would be okay to exhibit his creations in their pastures, on top of billboards, utility poles, fence posts, hilltops, yards and all sorts of unexpected places. It is a visual surprise around every bend.

From just west of Lincoln moving east to Tescott on K-18, and from Lincoln south to I-70 on K-14, you will spy some very unlikely creatures as Dickerman



*In the photos above and below are just a few of the unique creations that Jim Dickerman has designed and can be seen throughout Lincoln County.*

has dotted the landscape with his creations. While Kansas has a wonderful interstate system, sometimes you need to forego the beaten path to find the interesting and unique.

**To see more stories on transportation topics, check out the regular posts on the Kansas Transportation blog at <http://kansastransportation.blogspot.com/>**





***KDOT crews planted 1,196 milkweed plugs at the U.S. 59/I-35 interchange east of Ottawa.***

**Promoting pollinators:** KDOT is buzzing about pollinators lately. National Pollinator Week was June 18-24 and KDOT, along with five other state DOTs and the Federal Highway Administration, signed an agreement that will improve pollinator habitat along I-35, a key migratory corridor for monarch butterflies. Bee and monarch butterfly populations are on the decline. About three-fourths of the world's flowering plants and many of the food crops eaten in North America depend on pollinators. In the U.S., pollination produces nearly \$24 billion worth of products annually. The lack of pollination would mean no apples, blueberries, almonds, melons, pumpkins, chocolate, coffee and more. Last year, KDOT's Environmental Services unit, along with KDOT crews from the Ottawa Subarea, planted

about 15 acres of wildflower seeds on three plots of land at the Homewood rest area along I-35. Recently, KDOT received a grant from the Monarch Watch with KDOT Headquarters and the Ottawa Subarea planting 1,196 milkweed plugs consisting of various species. This monarch habitat restoration project is located at the U.S. 59/I-35 interchange east of Ottawa and covers 36 acres. Earlier this month, KDOT Headquarters and the Independence Subarea office used a grant from the Monarch Watch to plant 2,000 native wildflower plugs, consisting of 32 different species. It is located at the Montgomery County rest area near the U.S. 400 and U.S. 169 junction. The plant beds can be seen from the sidewalks, and informational signage will be placed along the pathways.

Once these wildflowers and milkweed plugs are established, these areas will become havens for monarchs and many other pollinators.



***Above, KDOT crews plant 2,000 native wildflower plants at the U.S. 400/U.S. 169 junction in Montgomery County. At right, butterfly lands on a milkweed plant.***



## District Four



*Sections of concrete pavement are being replaced on U.S. 166 in west Coffeyville. The city-administered project also includes storm sewer and curb and gutter improvements. The contractor is Jeff Graham Construction. The cost of construction is \$277,000.*

## KTA

*Concrete was placed to widen the eastbound bridge just east of Plaza 183 in Topeka as part of the project to convert the toll plaza to open road tolling.*



## District Six



*The Lakin subarea crew with assistance from the Syracuse and Garden City crews fill edge ruts on K-25 north of Lakin. Millings are mixed with dirt and spread using a dump truck and grader. A second grader pushes the millings to the side and is followed by the broom to remove the leftover dirt.*



### In Memory

Condolences to the family and friends of retiree John "Jack" O'Brien who passed away on June 10 in Olathe. O'Brien worked at the KDOT office in Olathe for 40 years.

Condolences to the family and friends of retiree Mike Fairleigh who passed away on June 21. He was an Engineering Technician at the Pratt office. Fairleigh worked at KDOT for nearly 30 years, retiring in 2015. Services are planned for July 7 in Scott City.

### KTA



*Need a great, new place to visit for a fun day trip? We have a variety of places for you to explore. Check out <https://www.ksturnpike.com/> to discover a new get away for your family trip.*



## MAGIC Camp

**MAGIC camp:** High school girls are attending MAGIC summer camp in Wichita this week to learn about career opportunities in construction and transportation fields. MAGIC (Mentoring a Girl in Construction) introduces high school girls age 14 or older to trade skill occupations and gives them a chance to learn from women already succeeding in these jobs.

"It's important to show young women who will soon be entering the work force job opportunities in non-traditional fields," said KDOT Civil Rights Administrator

Doria Watson. "This camp gives students self-confidence as they explore new career possibilities they may not have considered before."

Students will visit places such as the Wichita Dwight D. Eisenhower National Airport, Wichita's new Advanced Learning Library and Dondlinger Construction Company; participate in hands-on training and basic construction; and learn about various modes of transportation.

A total of 25 high school girls are participating. The event is sponsored by the City of Wichita and KDOT.

## District Four/BAK



*The 2018 week-long Biking Across Kansas (BAK) tour featured three days of cycling through southeast Kansas, concluding at Fort Scott on June 16. Here participants make their way along K-47 in St. Paul, which was one of several communities offering meals and points of interest on the route.*

## Traffic Safety

**Crash versus accident:** Chris Bortz, Traffic Safety Program Manager, wrote a blog last week that received nationwide attention. It appears below - Annually, about 60,000 crashes occur in Kansas. This equates to more than 150 crashes each day in the state. Four of the top five contributing circumstances listed on the crash report are driver-related behaviors. The contributing circumstances surrounding a crash are typically: speeding, too fast for conditions, failure to yield at a stop sign or stop light, following too closely, texting and/or other distraction. All these factors are 100 percent preventable. The decisions that every driver makes not only impact themselves and their passengers, but everyone else on the road. Using the word 'crash' instead of 'accident' more accurately identifies the event - it doesn't give the perception that no one was at fault. The word 'accident' implies no one was at fault or it couldn't have been prevented. That is a pretty hard pill to

swallow if you were the victim in a crash and the other driver was going too fast for conditions and/or was distracted.

You may have noticed that I didn't include the circumstance of 'impaired or drunk' in the paragraph above. Choosing to drive impaired is a horrible, conscious decision and the ramifications of this decision lead to around 100 deaths, 1,300 injuries and 2,300 crashes in the state every year. In Kansas, You Drink, You Drive, You Lose.

I don't believe that people get behind the wheel and say "I think I will injure or kill someone in a car crash today." Just because it was not intentional, doesn't mean it couldn't have been prevented. Most drivers rate themselves as great drivers and will say the problem is the other driver(s). However, driving is a privilege, not a right, you are sharing the road with all drivers and it is important for you to drive as if your life depends on it. Oh wait, it just might.