

# Translines EXPRESS

July 11, 2018

## Eureka Tornado

**Tornado damage:** An EF-3 tornado hit the town of Eureka on June 26 causing damage to the high school, houses, trees, power lines and the KDOT Eureka Subarea office. KDOT also closed a 21-mile section of U.S. 54 for several hours. With power lines down, KDOT employees couldn't access the Eureka shop until June 28, Iola Superintendent Derrick Shannon said.

KDOT Area offices in El Dorado, Iola and Independence sent numerous employees, several dump trucks, message boards, loaders, barricades, a track hoe and a skid steer to assist in the clean-up efforts.

KDOT initially took care of traffic control on U.S. 54 and K-99.

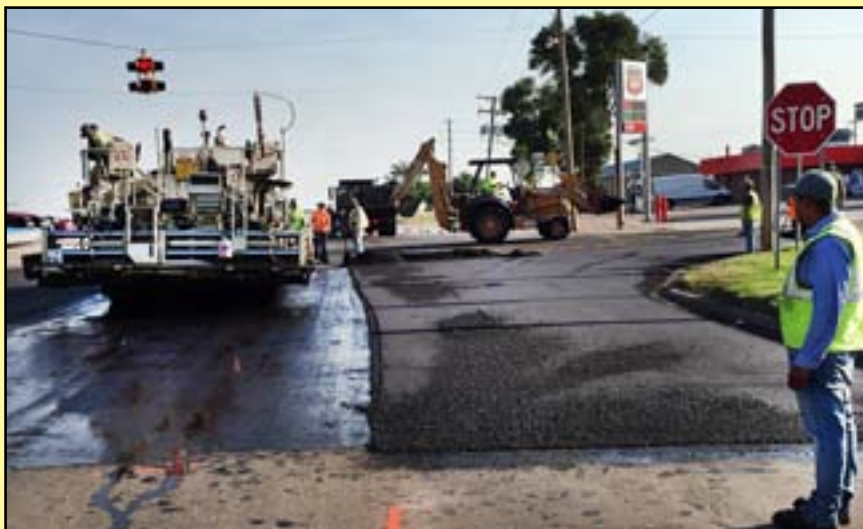
Then work began to haul brush and building debris.

More photos can be seen in this edition of the tornado damage in Eureka.



*At left, State Transportation Engineer Catherine Patrick and Director of Operations Larry Thompson, center, survey tornado damage of the cold storage building at the Eureka shop.*

## District Three



*Construction on U.S. 24 in Sheridan County is underway as crews are placing a three-inch mill, a three-inch HMA inlay and a 1.5-inch HMA overlay on 16 miles of U.S. 24 from the west city limits of Hoxie east to the Graham County line. The curb and gutter section in Hoxie is also getting a five-inch mill, 3.5-inch inlay, and a 1.5-inch overlay. The contractor will also install permanent pavement markings and rock edge wedge. Venture Corporation is the prime contractor on the \$3,980,000 project.*

## Trivia!

### Flood of 1951

1. From July 9-13, about how much rain was received in some areas along the Kansas River basin?
2. What larger towns were affected by the flood?
3. About how many buildings were damaged or destroyed in Topeka?
4. About how many people had to be evacuated from their homes?
5. What was constructed to help reduce flooding?

## District Five



*Director of Operations Larry Thompson, center, speaks to employees at the dedication of the new KDOT complex in Wichita.*

**Building dedication:** KDOT crews dedicated the combined North/East Complex on June 26. Larry Thompson, Director of Operations, attended the ceremony.

The complex, which replaced two facilities at 127th and Kellogg and 45th and Hillside, opened in June 2017 but had not yet had an official dedication.

The new building cost just more than \$3 million and is state-of-the-art with larger drive-through bays and increased storage.

"I think everybody took part in the process and took pride in what they did," said Area Superintendent David Lechner.

## TRIVIA ANSWERS

1. About 18.5 inches of rain.
2. It started near Manhattan and downstream flooding continued in Topeka, Lawrence and Kansas City. Altogether, about 116 towns were affected.
3. About 7,000 buildings.
4. About 85,000 people.
5. Tuttle Creek Dam.

## In Memory

Condolences to friends and family of retiree Wilma Neal, who passed away on July 2 in Sherman, Texas. Neal worked in KDOT's Bureau of Right of Way for nearly 26 years as an Appraisal Agent. She retired in 2011.

Condolences to friends and family of retiree Verl Glunt, who passed away on July 4 in Dodge City. He worked at the Dodge City office and retired after 28 years in 1996 as an Equipment Operator III.

Condolences to friends and family of retiree Rex Gary of Berryton, who passed away on June 30. Gary worked in several positions at KDOT during his 39-year career.

## District Three



*Above, the pond next to the Hays Area office was filled on July 6 after a severe rain storm covered the area. The National Weather Service in Dodge City reported that more than an inch of rain fell in 20 minutes across Ellis County that morning. At right, the rain gauge shows more than 4.5 inches of rain was received that day. Many areas in Hays and around Ellis County experienced flooding.*



## District Two



*KDOT crews from Marion and Council Grove patched U.S. 77 just south of Herington last week. Using a dump truck and a lay down machine, workers swept the edges while a roller compacted the surface afterwards.*



## District Five



*In these photos, subcontractor Bettis Asphalt works on the recycling phase of a \$3,493,000 project on K-4 stretching from the Ness/Rush county line to the Rush/Barton county line. Nearly 37 miles will get this treatment, and then Venture Corporation of Great Bend, the primary contractor, will place an overlay on top of what's been recycled.*



## General

**Work zone crashes:** More than half of highway contractors report crashes in their work zones, AGC says. Of the 550 highway contractors who responded to a survey by the Associated General Contractors of America, 54 percent said a vehicle had crashed into their work zones in the past year. That's up from 44 percent in 2017. The national AGC survey also showed 48 percent of those contractors reported that the incidents resulted in injuries to vehicle operators or passengers (down from 49 percent in 2017), and 24 percent said the crashes involved a fatality (up from 13 percent in 2017).

Workers were injured in crashes, as well. According to the survey, 25 percent reported workers injured and 3 percent reported worker deaths from work zone crashes. "There are simply too many cars crashing into too many work zones, putting too many lives at risk," said Ken Kubacki, chairman of AGC's highway and transportation division and the western region projects executive for Granite Construction Co., in a statement. The survey also revealed that 53 percent of the contractors had to delay projects during the past 12 months because of work zone crashes. That's up from 27 percent in 2017.

# Kansas Transportation

Monday, July 2

## Motoring Monday

Color Kansas lucky, because the Evel Knievel Museum is at the historic Harley Davidson location in Topeka.

For many, Evel Knievel was Batman, Superman and Captain America all rolled up into one. The 13,000 square-foot museum explores Knievel's early days of jumping over a box of rattlesnakes until his retirement after approximately 175 jumps on physics-defying motorcycles that turned him into a legend. The museum showcases a massive collection of authentic artifacts that belonged to Evel Knievel. Toys, action figures and other licensed products are also part of the exhibit. One of the biggest attractions is the 1974 Mack Truck and Trailer, dubbed "Big Red," which was famous for hauling Knievel and his motorcycles around the country.

Visitors can see the Skycycle X-2, which is a rocket with wheels that Knievel attempted to jump across Snake River Canyon in. They can also try out the museum's Plan a Jump interactive wall game. There is also a virtual reality simulation where visitors can experience a jump through their own eyes while riding a motorcycle. That scene was filmed on location in Topeka with the help of Doug Danger, who rode a vintage bike and a helmet that gives the viewer a 360-degree view of the jump as it happens.

The Evel Knievel Museum opened last year and so far, Evel Knievel enthusiasts from 37 different countries have visited. More than 54 percent of the visitors who enter are from outside Kansas.

Recently, the Evel Knievel Museum was an



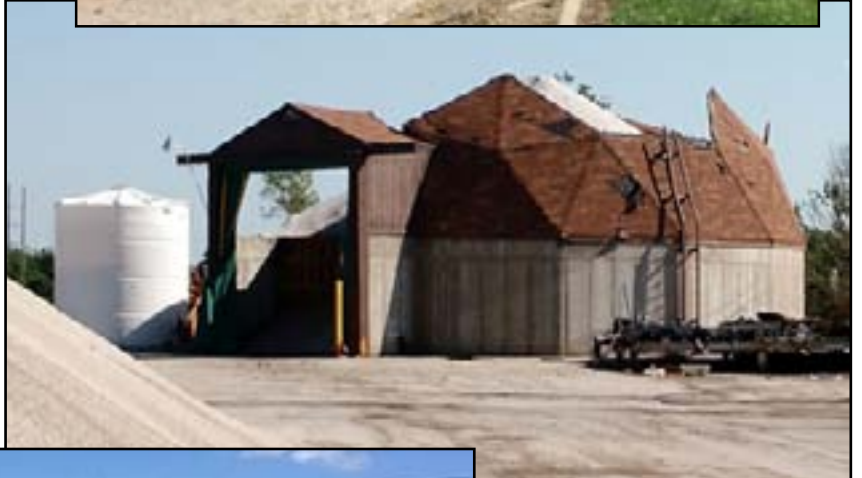
*As shown in the photos, the Evel Knievel Museum in Topeka has lots of memorabilia and an interactive game where riders can experience a jump.*



answer on "Who Wants to Be a Millionaire" and it was featured on USA Today's Top New Attractions in 2017. Through Labor Day, the museum will be open Tuesdays through Sundays. For more information check out [www.evelknievelmuseum.com](http://www.evelknievelmuseum.com).

**To see more stories on transportation topics, check out the regular posts on the Kansas Transportation blog at <http://kansastransportation.blogspot.com/>**

## Eureka Tornado



*Top photos and at left: KDOT crews help remove debris around Eureka. Middle left: Another view of the KDOT storage building that was damaged. Middle right: The roof of the salt dome was also damaged.*

*At right, crews from El Dorado in District Five helped District Four with recovery efforts after a June 26 tornado struck Eureka. "We were in a real pickle at Eureka," District Four Engineer Wayne Gudmonson said in a thank-you note. "We needed help and you came!"*



## General

**New law:** Kansas joined 20 other states who protect good Samaritans from legal retribution for assisting people or animals in imminent danger who are trapped in a hot car.

“Because heat-related deaths can happen quickly, KS HB 2516 passed during the 2018 legislative session,” the Humane Society Legislation Fund (HSLF) said. “This new law grants good Samaritans the legal right and immunity (under certain conditions) from civil liability to rescue a vulnerable person or domestic animal (livestock not included) from a locked vehicle when the individual believes that the person or animal is in imminent danger unless saved.”

The new law went into effect July 1.

“Every year, at least 37 children and dozens of animals die from vehicular heat stroke,” said Miranda Pratt, HSLF Development Director. “We hope that the new law will help lower that statistic and empower the Kansas community to act quickly to rescue a child or animal trapped in a hot car without fear of legal retaliation. Educating our community on this issue and how they are empowered through the new law is key.”

According to the HSLF:



- 80 percent of the temperature increase inside a hot car happens in the first 10 minutes.
- Cracking a window has been proven to not slow down the heating process or decrease the car's maximum temperature.
- A child's body temperature rises three to five times faster than an adult.
- Pets do not sweat the way humans do. An animal can sustain brain damage, organ damage/failure or die from a heatstroke within just 15 minutes of being trapped in a hot car.

For more information and requirements to when the new law applies, check Safe Kids Kansas' website [here](#).

## Headquarters



*At left, Melissa Brunner, Evening News Anchor and Managing Editor for WIBW-TV in Topeka, and above, Logan Hildebrand, Digital Media Manager for the Kansas Department of Wildlife, Parks and Tourism, were two of several speakers at the annual Communicators Meeting in Topeka. The meeting focused on topics for communicators in KDOT and other state agencies.*

## Retirees

The following employees will retire from KDOT in August.

### District One

**Robert Ellis**, Equipment Operator, Shawnee

### District Two

**Randall Bryant**, Engineering Technician Senior, Marion

### District Five

**Floyd Hull**, Equipment Operator, Newton

**Gary Jarvis**, Highway Maintenance Supervisor,  
Kinsley

**Christopher Williams**, Equipment Operator Specialist,  
Kingman

**Do you know a KDOT  
retiree not receiving the  
electronic Translines  
newsletter?**

**Please let them know that  
if they are interested in  
receiving it, send an email  
to [Kim.stich@ks.gov](mailto:Kim.stich@ks.gov)**

## KTA



### KTA Briefs:

♦As shown in the graphic above, the southbound K-4 ramp connecting to eastbound I-70 has temporarily closed to accommodate construction at the East Topeka toll plaza at MM 183. The ramp is anticipated to reopen in early August, weather and schedule permitting. Learn more [here](#).

♦The fourth annual Kansas Winter Expo is open for sponsorships and vendors. The event, Sept. 5-6,

will take place at the Kansas Expocentre in Topeka and provides those involved in roadway safety and maintenance an opportunity to learn about the latest equipment and best practices in the field. More information on the event is available at [www.kansaswinterexpo.com](http://www.kansaswinterexpo.com).

♦A project to paint, protect and preserve eight bridges has recently been awarded. Learn more [here](#).