

# Translines EXPRESS

Aug. 22, 2018

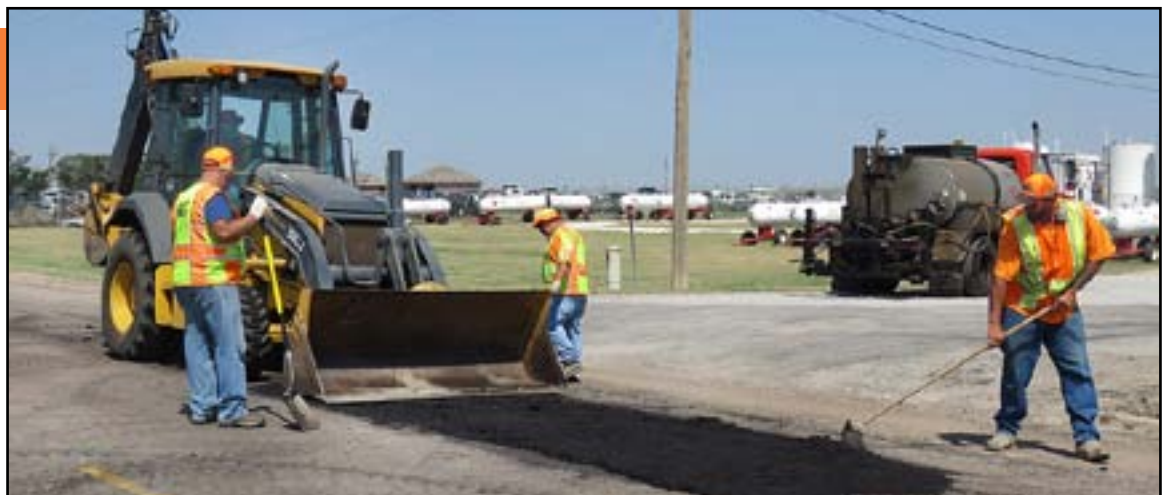
## Employee Recognition



***Congratulations to members of the CDL Training Team for being selected as the Example of Excellence for the second quarter of 2018. The team was honored by Secretary Richard Carlson and others at a ceremony on Aug. 14 in Louisburg. The team worked together to help train newly-hired Equipment Operators and prepare them for passing CDL tests. They developed training aids, review sections, sample tests and flashcards in the process. Team members were Andrea Barnes, McKenzi Huettenmueller, Alvin Loveall and Mike Smith. Pictured above, from left to right, include; front row, Kevin Ryan, Barnes, Cole Dennis, Donna Schmit; middle row, Wayne Gudmonson, State Transportation Engineer Catherine Patrick, Secretary Carlson, Dakota Orlando, Allan Oshel, Smith; back row, Terry Kinder, Loveall, Wes Moore, Director of Operations Larry Thompson, Dean Wagner, Kevin White and Mike Hercules.***

## District Six

***The Jetmore and Ness City Subarea crews fill potholes on K-96 in Bazine. Pictured are LeRoy Keith, Brian Brown, Michael Parker and Larry Kjellberg. Photos of more work in District Six are in this edition.***



## District Four



*Paving has begun U.S. 169 south of Iola. Emery Sapp & Sons, Inc., of Columbia, Mo., is contractor on the seven-mile pavement reconstruction project, which has a construction cost of \$16 million. Aaron Frits' road squad and Mark Hurt's bridge squad designed the project.*

## Trivia!

### Toys – Part three

1. What was the first toy with its own TV commercial?
2. What toy came about in 1945 when a mechanical engineer accidentally knocked over some ship springs he was working on?
3. What was the most popular toy for Christmas in 1934?
4. What toy was introduced in the 1960s as a kind of male counterpart to Barbie, but was marketed as an “action figure?”
5. What 1978 original toys are now collector's items that could be worth up to \$200,000?
6. This squishy-faced toy was all the rage in 1983.

Have an idea for a news brief or picture that could be featured in an upcoming edition of Translines Express? Please e-mail your suggestions to [Kim.stich@ks.gov](mailto:Kim.stich@ks.gov)

## TRIVIA ANSWERS

1. Mr. Potato Head, with the catchphrase, “Can I have that? I want that.”
2. Slinky.
3. The Shirley Temple doll.
4. G.I. Joe
5. Star Wars action figures.
6. Cabbage Patch Kids dolls.

## Aviation

**Kansas leads the nation with UAS flight:** The first beyond the line of sight Unmanned Aircraft Systems (UAS) flight in Kansas was flown on Aug. 13 north of the town of Gypsum in a joint effort by KDOT and more than 30 university and corporate partners. This was also the second flight in the nation to take place under the U.S. DOT's UAS Integration Pilot Program (IPP).

The first flight was scheduled to take place Aug. 14, however, with rain and storms predicted, it was conducted early. Kansas State University Polytechnic took the lead on both flights.

"We're proud of what we're doing in Kansas to create new jobs, improve flight safety and advance agriculture," said Bob Brock, KDOT Director of Aviation and UAS. "Our flights mark the beginning of a new generation of Kansas innovation."

KDOT was selected in May as one of only 10 organizations in the nation to lead the UAS IPP, an initiative aimed at shaping the future of drones.

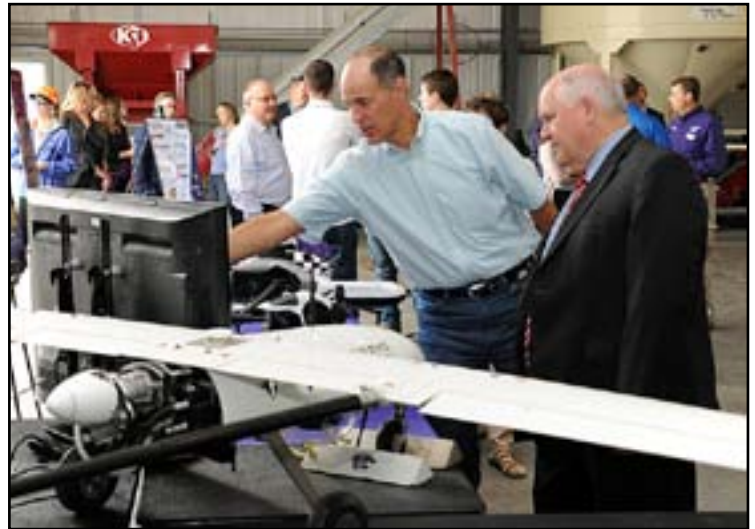
The flights this week, and future flights, will test aircraft capability and reliability for continued beyond line of sight operations while collecting data to expand advanced UAS operations nationwide.

Over the next two years, various Kansas IPP team partners will conduct tests over transmission lines, farms, roads and other infrastructure well clear of Kansas citizens. This program will also assist the U.S. DOT and Federal Aviation Administration (FAA) in shaping new rules to expand safe UAS integration into the National Airspace System and create new opportunities for the state and UAS industry.

"Kansas has been a valuable aviation partner for decades and the launch of the IPP is another opportunity for us to work with all of the professionals here in Kansas as we take the next steps that will pave the way toward full integration of unmanned aircraft into the national airspace," said Dennis King, FAA Program Manager for Kansas UAS IPP.



*Above, KDOT Aviation Director Bob Brock speaks at the Aug. 14 event near Gypsum where the beyond the line of site UAS flight took place. Below, state Rep. Jerry Thompson and U.S. Rep. Ron Estes look at equipment on display.*



*At left, Kansas State University Polytechnic staff get ready to launch the UAS at the event. Above, the UAS travels close to the ground.*

## District Six



*Above, a mill and overlay project has been in progress on U.S. 83 from north of Scott City to the Scott/Logan county line. The shoulders were chip sealed last week to complete the project. At right, winds from the summer storms damaged the remote equipment storage and the remote salt/sand bunker at the K-4/23 junction in Lane County in July. The Dighton Subarea crew has been busy rebuilding the equipment storage. Pictured are David Piedra, Perry Wilkinson and Jason Lawrence.*



*At left, Heft and Sons of Greensburg completed a scrub seal on K-25 north of Lakin in Kearny and Wichita counties. An asphalt emulsion was applied to the road's surface, followed by a layer of aggregate, then rollers set the aggregate into the oil to give traction during normal traffic use. Excess aggregate was then swept off the roadway by a broom.*



*Earlier this month, Dustrol completed a hot-in-place recycle on U.S. 160/283 from the south to the north U.S. 160/283 junction in Clark County. This was followed by a chip seal on the shoulders, which was completed last week.*

## District Four



***Construction on the K-7 modernization from K-102 south to U.S. 160 is in the final phases. Koss Construction is the primary contractor on the \$39.9 million K-7 project that runs between the communities of Cherokee and Columbus. KDOT expects to open the entire 11-mile section to unrestricted traffic later this summer. Thomas Rhoads' road squad and Karen Peterson's bridge squad designed the project.***

### Scenic

***KDOT employee Neil Croxton took this photo of the old Kansas City Southern railroad bridge in Kansas City, which is over the Kaw River. It was built in 1916 and abandoned in 1983.***



*At right, crews worked on canopy footings and utility vaults for the new entry booths at the East Topeka toll plaza. The eastbound I-70/KTA bridge connecting to the East Topeka toll plaza is restricted to one lane until late August, weather permitting, to allow for paving. Drivers may consider using the South Topeka entrance to avoid congestion during this phase of construction. Learn more by reading the news release [here](#).*



## Put the Brakes on Fatalities Day

**Poster/video contests:** Kansas kids can win great prizes and learn about traffic safety by participating in poster and video contests as part of the annual Put the Brakes on Fatalities Day safety campaign.

**Video contest:** For Kansas teens in grades 8-12. Prizes from the KTA include:

- ◆ iPad, a Go Pro and a DJI Osmo camera.
- ◆ The school of the grand prize winner will receive \$500 for its school, class or booster club.

Video entries must be posted by 11:59 p.m. on Sunday, Sept. 30. Information to submit entries is available [here](#).

**Poster contest:** For Kansas kids ages 5 to 13 - three statewide winners will each receive:

- ◆ Kindle Fire Tablet and case from the KTA;
- ◆ \$50 gift card from Wal Mart;
- ◆ \$50 Amazon gift card from the Petroleum Marketers and Convenience Store Association of Kansas;
- ◆ Movie passes from AAA Kansas.

A total of 18 regional winners in the six regions and age groups (ages 5-7, ages 8-10 and ages 11-13) will receive a bicycle from the KTA and a helmet from



**For details on the contests - click [here](#).**

Safe Kids Kansas. Poster entries must be postmarked by Friday, Sept. 21. Information and entry forms are available [here](#).

## Kansas Transportation

Monday, Aug. 13

### Motoring Monday

Numerous buffalo can be seen at the Maxwell Wildlife Refuge. In Battlehill township of McPherson County lies a piece of preserved natural prairie, comprised of rolling hills, creeks, springs and beautiful prairie grasses and wildflowers. Maxwell Wildlife Refuge near Canton is home to one of the few surviving wild buffalo herds. It began in 1859, when a small herd of buffalo were driven into the area around the Maxwell homestead. The Maxwell family wanted to preserve a piece of prairie with a roaming herd of buffalo for future generations. So in 1943, the Henry Maxwell estate donated 2,560 acres of land to what is now the Kansas Department of Wildlife, Parks and Tourism for the creation of the Maxwell Wildlife Refuge, which is dedicated to bison and other species. This unique area, located six miles north of Canton, possesses one of the finest herds of buffalo in the United States, along with elk and other wild game.



*Numerous buffalo can be seen at the Maxwell Wildlife Refuge.*



The Kansas Department of Wildlife, Parks and Tourism maintains herds of American plains bison and elk under as natural conditions as possible, keeping with the current land-use demands. This helps to ensure that an important part of our state's natural heritage will not disappear from this portion of the Great Plains.

**To see more stories on transportation topics, check out the regular posts on the Kansas Transportation blog at <http://kansastransportation.blogspot.com/>**

## Traffic Safety

In 2016, there were 2,211 alcohol related crashes in Kansas and  
**39% RESULTED IN INJURIES.**

The consequences of the choice to drink and drive are  
**100% AVOIDABLE.**

**Drunk driving:** Law enforcement are working overtime to target impaired drivers across Kansas and the country as part of the annual You drink. You drive. You Lose. campaign that kicked off Aug. 16 and continues through the Labor Day weekend.

More than 150 law enforcement agencies across Kansas are joining forces to stop drunk driving. Labor Day weekend is one of the most dangerous times of the year to be on the road. On average, three people are injured every day in alcohol-related crashes in Kansas. Nationally in 2016, more than one-third of all fatalities over the Labor Day weekend involved a drunk driver with a BAC of .08 or greater.

“Drunk driving is not a victimless crime and is 100 percent preventable,” said Chris Bortz, KDOT Traffic Safety Manager. “Impaired drivers cause 20 to 25

percent of all traffic fatalities. We are driving to zero fatalities in Kansas, and the You drink. You drive. You Lose. mobilization is one of the many ways we are working to reduce death and injury on Kansas roads.” In 2017, male drivers accounted for nearly 80 percent of all impaired driving fatalities and 70 percent of all impaired driving injuries in Kansas.

Impaired drivers can face jail time, suspension of their driving privileges, fines and other costs of up to \$10,000. Included in this cost, the offender will be required to install and pay monthly services fees on an ignition interlock. Beyond the financial and legal penalties, impaired drivers face the risk of losing their own lives or taking someone else’s.

“Alcohol and driving never mix,” Bortz said. “If you plan on drinking don’t plan on driving.”

## District Four



*Fifteen miles of K-3 was resurfaced with a mill and overlay between the K-39 and K-47 junctions. KDOT awarded the \$861,000 construction contract to Shilling Construction Company.*