

Translines EXPRESS

July 25, 2018

Projects Announced



At left, Gov. Jeff Colyer announces projects to improve economic development and a section of K-99 near Wamego on July 18. Below, a large crowd gathered at Pittsburg State University to hear Gov. Colyer also announce two U.S. 69 projects will resume that were delayed.

Upcoming projects:

Two U.S. 69 projects that were previously delayed are now back on track as well as two projects to improve economic development and a section of K-99 near Wamego.

The U.S. 69 projects - the first from three miles north of Arma north 5.5 miles to the Crawford/Bourbon county line, and the second from K-47 north six miles to three miles north of Arma - have resumed right of way acquisition. The first project is expected to start construction in spring 2020 to a four-lane upgradable expressway. The second project is expected to start construction in spring 2021 to a four-lane expressway. These two projects are estimated at a total of about \$57 million. In the Wamego area, KDOT has committed \$3.6 million of an \$8



million economic development truck bypass project being administered by the City of Wamego. In addition, design work is underway to improve a 3.9-mile section of K-99 between Wamego and I-70. The \$18.8 improvement project is expected to be let for construction in fall 2020.



At right is a section of U.S. 69 in Crawford County that will be expanded to four lanes.

Trivia!

Toys – Part one

1. What is the oldest known toy in the world?
2. What toy was invented in the 1760s as a learning tool?
3. When was the kaleidoscope invented?
4. Who invented Lincoln Logs?
5. What was Play-Doh first used for?

District Four



A concrete pavement patching project on U.S. 400 in Greenwood County started in early July. The 15-mile project is located between the east junction of U.S. 400/K-99 and the Greenwood-Wilson county line. Iowa Civil Contracting, Inc. is contractor at a cost of \$2 million. Steve Rockers' road squad designed the project.

TRIVIA ANSWERS

1. In 2004, archaeologists dug up a 4,000-year-old stone doll head in the ruins of a village on the Italian island of Pantelleria.
2. John Spilsbury invented the jigsaw puzzle to help children learn geography.
3. 1817.
4. John Lloyd Wright, Frank Lloyd Wright's son. The original instructions told how to build a replica of Abraham Lincoln's cabin.
5. It was sold to clean wallpaper.

Kudos

Following is an email sent to KDOT Headquarters:

I want to thank the two guys who stopped to help today. We are driving from Oklahoma to Nebraska in our RV, near Waldo, and the awning came loose from the wind and was hanging down. The KDOT guys turned around and came back to help us get it back up and taped together. We can't thank them enough! We didn't get names, but please thank them for us. Really good guys!

District Six

Teamwork makes the dream work: It's one of those clichés that is overused, but it has been shown many times by District Six Subarea crews.

Most of these crews consist of a supervisor and five crew members. So, when maintenance projects require multiple pieces of equipment or traffic control, one subarea takes the lead while other subareas pitch in to get the job done.

For example, in March the Garden City Subarea crew needed to remove two large medians on U.S. 50 Business and repave the area before a mill and inlay project started on U.S. 50 Business this summer. The Dighton crew and Scott City supervisor joined the Garden City crew to help complete the median removal. The Dighton Subarea crew adjusted schedules and drove many miles to assist with the project, which was completed in less than eight weeks. Hector Terrones, Garden City Subarea Supervisor, said teamwork was essential to completing this project while still maintaining each Subarea.

In June, the Lakin Subarea crew needed to fill edge ruts and complete a small resurfacing project on K-25 north of Lakin before a contract crew could start a chip seal project planned for later this summer. The Syracuse, Scott City and Garden City crews joined the Lakin crew and together the crews were able to fill 48 lane miles of edge ruts on K-25, in addition to completing the paving project in mid-July.

"Teamwork is the only way we can complete projects like this in the Subareas," said Lakin Subarea Supervisor Kray Adams. "Combining crews, being able to work together and get along well with each other helps us all accomplish more."

While Lakin was resurfacing on K-25, the Jetmore, Dodge City and Ness City crews teamed up to resurface



Above, U.S. 50 median removal takes place in Garden City. Below, Edge ruts are filled on K-25 north of Lakin. At the bottom, resurfacing work took place on U.S. 283.

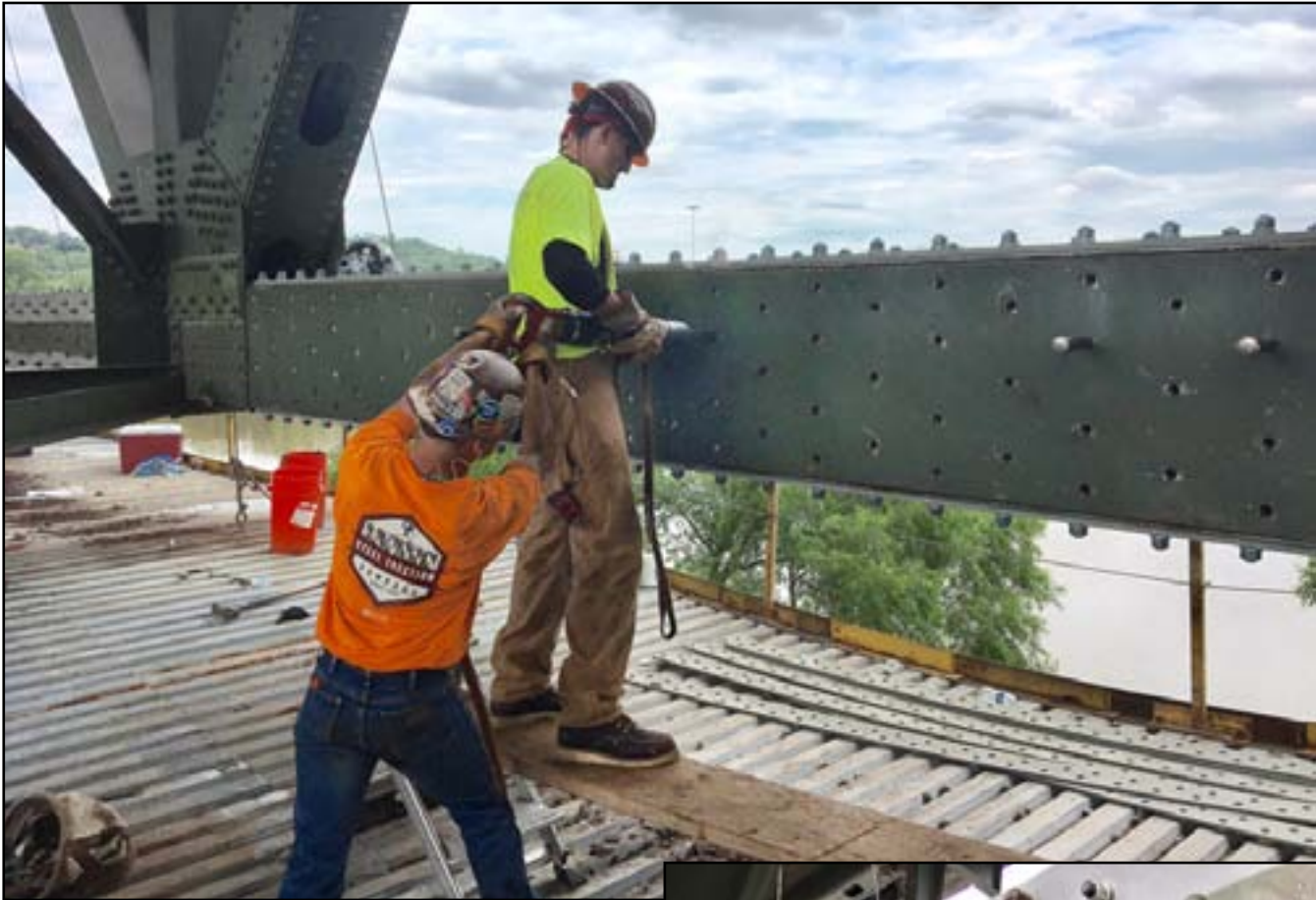


a small section of U.S. 283 on the Hodgeman/Ford county line. The project required traffic control, five dump trucks, two blades, an oil truck, broom and two rollers. Together, the three crews were able to complete the project in one day.

"This was a great opportunity for the crews," said Willie Phelps, Dodge City Subarea Supervisor. "The less experienced crew members had the opportunity to work and learn from the more experienced crew members."



District One



Work on the U.S. 69/18th Street Expressway bridge in Kansas City is taking place as inspections this spring revealed rust and cracks that needed to be repaired. The bridge was closed to traffic to expedite the repair process and crews are currently drilling out old bolts, as seen in the photos above. They are also removing rust as well as adding reinforcing steel and additional bolts, as seen at right. The bridge is expected to re-open in November. John Jones' bridge squad and Kris Norton's road squad designed the project.

Kansas Transportation

Wednesday, July 25

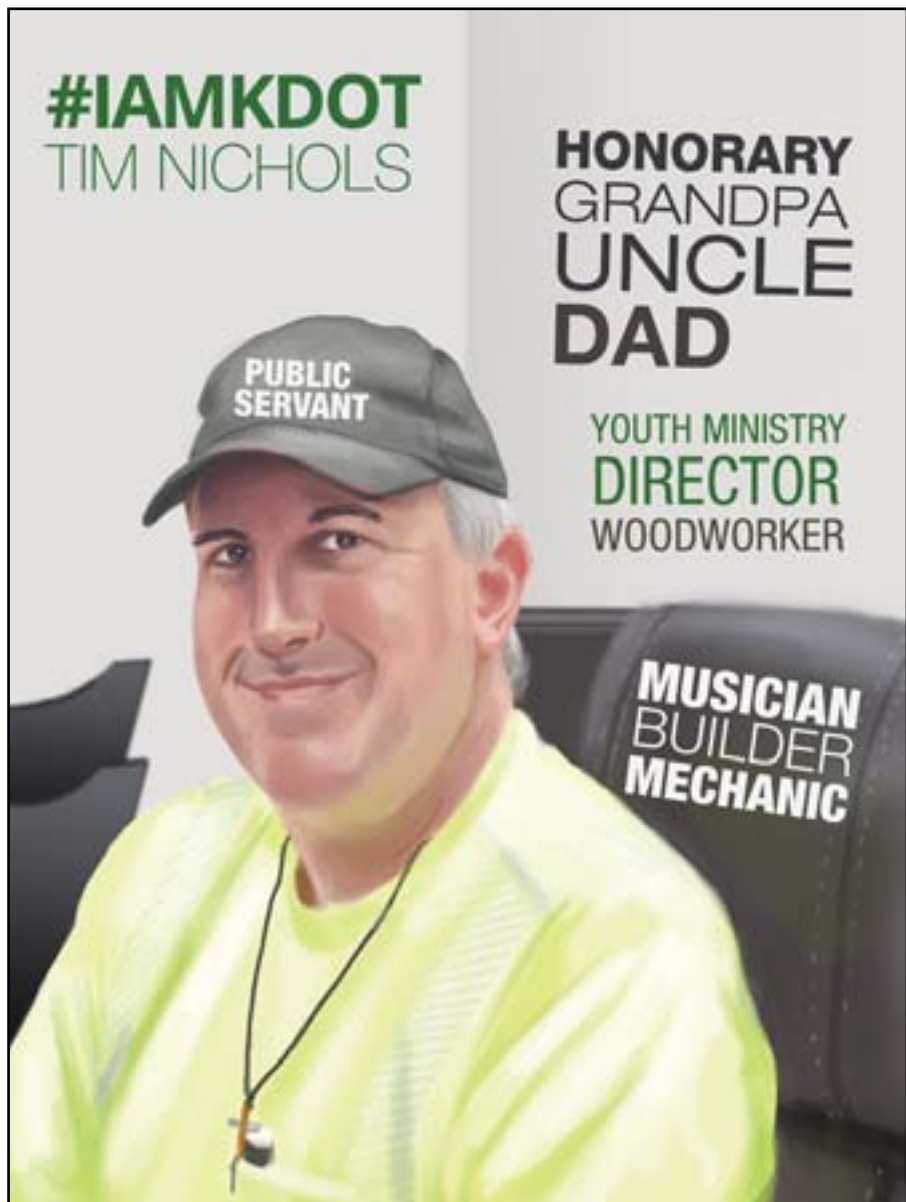
#IAMKDOT

Challenges and problem solving often come with the job. For Tim Nichols, KDOT Engineering Technician Specialist from Syracuse, the challenges and problem solving that come with KDOT's larger projects are the best part of his job.

After attending Dodge City Community College, Nichols returned to his hometown of Syracuse and spent time working in auto body repair and at the local grocery store. He then began with KDOT as an Engineering Technician Associate. Nichols is responsible for inspecting highway projects, authorizing contractor payments and overseeing contractors and construction projects so the work meets KDOT specifications. He says the best part of his job is the challenges that come up on larger projects and the problem solving that goes into finding a solution. Nichols has been named District Inspector of the Year once and Area Inspector of the Year three times during his 20 years with KDOT.

Nichols is always busy. You might find him out inspecting bridges or highways during the day, and you may also find him checking a stoplight at midnight on a holiday to make sure it works properly. He also assists with flagging traffic in the in the dead of night during power outages or meets a crew at the concrete plant at 3:30 a.m. to prepare for a concrete pour.

And while Nichols truly enjoys his work, what he enjoys the most is using his talents to help others. Nichols serves his church as the Legacy Youth Ministry Director and as a trustee on the local Board of Administration of the Syracuse Wesleyan Church. He also volunteers as the sound technician for Syracuse High School basketball games, plays, concerts and special events, is a founding member



of the Syracuse Sand Park board, is a builder, auto mechanic, sound technician and volunteer dad, uncle and grandpa. He enjoys playing the bass and guitar, working on cars and woodworking. Do you know a KDOT worker that deserves recognition? Nominations are open - email Mallory.goeke@ks.gov today to get started.

To see more stories on transportation topics, check out the regular posts on the Kansas Transportation blog at <http://kansastransportation.blogspot.com/>

KTA

KTA Briefs:

- ♦The KTA recently announced a toll adjustment as part of the approved Fiscal Year 2019 budget. More information regarding the toll rate change, and the increased electronic discount can be found [here](#). The new cash toll schedule can be seen [here](#) and the electronic toll schedule online can be seen [here](#).
- ♦At right, hydro-demolition was performed on the Troublesome Creek Bridge deck surface to prepare it for resurfacing later this month. This bridge is located at mile marker 129.18 on I-335/ KTA and is part of a two-year project involving 10 bridges northwest of Emporia.



District Six



Resurfacing of K-96 in Greeley, Wichita and Scott counties was completed recently, and final striping took place last week. APAC Shears of Hutchinson was the contractor on this project.

Kansas Transportation

Monday, July 16

Motoring Monday

Make no bones about it, the Sternberg Museum in Hays ranks among the best natural history museums in the country in terms of scientific holdings.

The museum is home to one of the top collections of Cretaceous marine and Neogene terrestrial vertebrate fossils. It also features an excellent assembly of Pteranodon material, the largest collection of fossil grass seeds and an assortment of modern biological material, mammals, reptiles and plants.

Perhaps its most famous display is an exceptionally well-preserved Gillicus within a Xiphactinus, or better known as the Fish-within-a-Fish. The unique find was discovered by the museum's namesake George F. Sternberg and shows a large 14-foot fish with its last meal, a six-foot fish, fully intact inside of it.

Other attractions include a realistic Cretaceous diorama (watch out for the T-rex!) and a fossil dig pit. Many areas of the museum encourage hands-on interaction including its Discovery Room, where visitors can explore drawers full of touchable specimens from the Great Plains, climb on Charlotte the Spider and view a variety of live animal exhibits, including native snakes, turtles, lizards and fish.

In addition to its permanent displays, the Sternberg also hosts temporary exhibits and various events



Above, one of the most famous fossils at the Sternberg Museum in Hays. In the photos below, many of the displays at the museum are realistic examples of life millions of years ago.



throughout the year. Visit the museum website at <http://sternberg.fhsu.edu> for more exhibition and event information.

What will you discover under the dome at the Sternberg Museum?

To see more stories on transportation topics, check out the regular posts on the Kansas Transportation blog at <http://kansastransportation.blogspot.com/>



District Six



Above, Venture Corporation of Great Bend is nearing completion on a \$1.1 million mill and inlay project on U.S. 50 from Campus Drive to Town Road in Garden City that began July 10. According to Craig Schlott, District Six Area Construction Engineer, crews have completed paving and are now finishing up shoulder work. Below, a \$1.6 million mill and overlay project on U.S. 83 north of Scott City began July 9. Crews are expected to finish paving work on this 14.9-mile project next week, which is being completed by APAC Shears of Hutchinson. Tom Rhoads' road squad designed these projects.



General

Recycling efforts increase: According to Better Roads, asphalt mix producers continue to make significant use of energy-saving warm-mix asphalt technologies, with more than 99 percent of reclaimed asphalt pavement recycled.

In 2017, 147.4 million tons of warm-mix asphalt was produced at reduced temperatures. That's nearly 39 percent of total asphalt pavement mix production – and a whopping 777-percent increase since 2009.

Nearly 79 million tons of recycled materials, including shingles, were used in asphalt pavements. That's according to the 2018 survey of the U.S. asphalt pavement mixture production industry by the National Asphalt Pavement Association (NAPA). The survey was sponsored by the Federal Highway Administration. Asphalt mixture producers from all 50 states completed the 2017 construction season survey, with 238 companies and 1,158 production plants represented.