

Translines EXPRESS

March 7, 2018

KHP Trooper Shawn Summers took these photos on Tuesday of fires along I-70 near Hays with smoke blowing over the Interstate. They were shared on KHP Trooper Tod Hileman's Twitter page as well.



Grass fires and blowing dust are affecting numerous areas around the state and closed several highways on Tuesday. Motorists were advised to avoid these roadways. Some residents also had to be evacuated in places.

Retirees

The following employee is retiring in March.

District Two

Mason Lee, Equipment Operator, Council Grove

The following employees will retire in April.

Headquarters

Timothy Berg, Administrative Assistant, Fiscal Services

Rita Hodges, System Software Supervisor, Information Technology

Lynn Rethman, Public Service Administrator 2, Right of Way

Dorothy Straney, Engineering Technician, Construction & Materials

District One

Frank Johnson Jr., Equipment Mechanic Senior, Topeka

District Two

Gerald Bowser, Equipment Operator Senior, Lindsborg

Dennis Chopp, Engineering Technician Specialist, Belleville

Donald Shipman, Equipment Operator, Marion

District Four

Mark Crystal, Equipment Operator Senior, Fort Scott

Robin Durand, Equipment Operator, Ottawa

Tommie Phillippi, Administrative Specialist, Independence

District Five

Ronald Ary, Engineering Technician Senior, Hutchinson

Harold Martin, Equipment Operator Specialist, Medicine Lodge

Annette Ratcliff, Engineering Technician Senior, Wichita

District Six

Carol Dick, Administrative Assistant, Garden City

Ted Orrison, Engineering Technician Senior, Dodge City

Angel Sifuentes, Equipment Operator, Ulysses

District Four



Workers inspect a new beam placed on the U.S. 75 bridge over U.S. 400 at Neodesha. The bridge repair began in November 2017 and is expected to be completed this spring. The bridge was damaged in a one-vehicle crash last summer. A.M. Cohron and Son, Inc., of Atlantic, Iowa, is the primary contractor on the \$426,000 project. Michael Ingalls' bridge squad designed the project.

Work Zone Contest

The KTA is hosting its third annual design contest for National Work Zone Awareness Week, which is April 9-13. Students in grades 8-12 can submit their design for a chance to win a Wacom tablet or \$200 gift card. Also, their work will be featured in VYPE Magazine, the high school sports magazine for central and northern Kansas including the Wichita and Salina surrounding areas. Full contest rules and details can be found at <https://www.ksturnpike.com/contests>.

2018

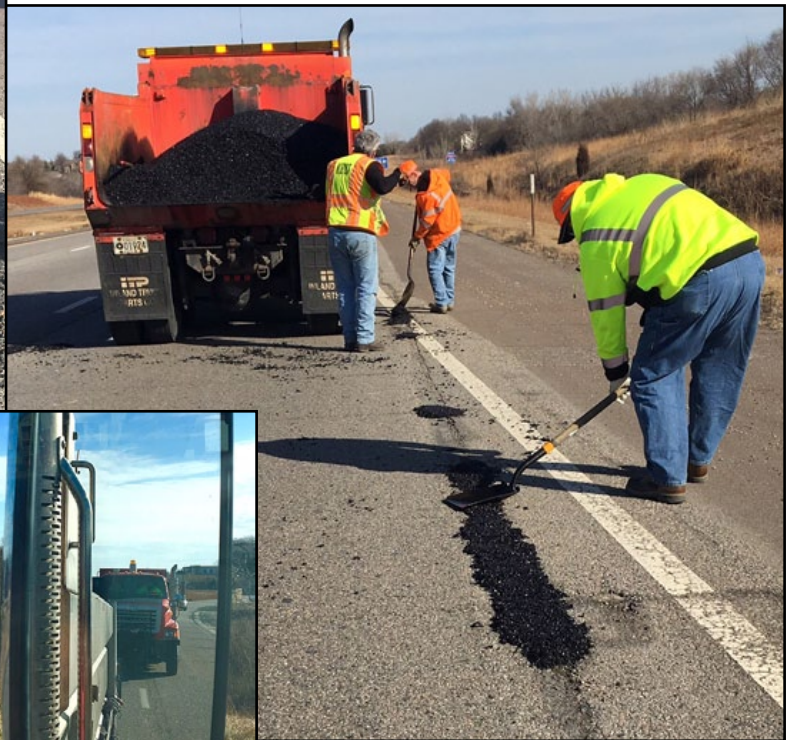
NATIONAL WORK ZONE AWARENESS

DESIGN CONTEST!

[ksturnpike.com/contests](https://www.ksturnpike.com/contests)



District One



KDOT crew members in District One, Area Two, set up on I-435, one of the most-traveled highways, to fill potholes last week. A typical rolling pothole crew on I-435 is comprised of six people: a two-person crew on foot, two attenuator trucks, a warning truck and four drivers. Pothole patching typically takes place from 9 a.m. to 3 p.m. to minimize traffic delays.



District Six

The first of two bridge replacements on U.S. 50 in Hamilton County is nearing the halfway point with the pouring of the bridge deck on the south half of the U.S. 50 bridge about one mile west of K-27. The bridge deck took 282 yards of concrete in 29 trucks. Bridges Inc. of Newton is the contractor on this \$1.1 million project which is expected to be completed in July. Kris Norton's road squad and Shawn Schwensen's bridge squad designed the project.



Above left, KDOT Engineering Technicians Montana Maas and Brian Weis begin concrete tests during the concrete deck pour on the Hamilton County bridge located on U.S. 50 west of Syracuse. Above, the crew follows the paver hand finishing the edges of the bridge. At left, once the concrete is poured, crews cover the deck with burlap, white plastic, and blankets to protect the concrete from low overnight temperatures as it begins to cure. The concrete will cure in this manner for a minimum of 14 days and then the coverings will be removed, and the concrete will be sprayed with two coats of white liquid membrane forming compound to finish the cure period for another seven days.

Traffic Safety

Starting safety coalitions: Once upon a time, this mangled heap of metal, shown at right, was a Chevy Camaro. The teen occupants, who were wearing seat belts, survived, but according to KDOT, more than 450 other individuals in traffic crashes last year did not.

While 2017 data is unofficial at this time, current data shows there were more than 12,500 crashes resulting in 455 people killed, 961 disabled, 6,601 with minor injuries and 9,426 with possible injuries. About 95 percent of these crashes were the result of driver behavior error, according to Lisa Hecker, KDOT Program Consultant with the Bureau of Transportation Safety and Technology. Like many other individuals and organizations, KDOT is concerned with reducing fatalities and serious injuries in Kansas and has been working to establish traffic safety coalitions in communities throughout Kansas.

“Realizing that issues in Johnson County are very different than issues in southwest Kansas, we knew we needed coalitions at the local level in addition to the work we are already doing at the statewide level,” said Steven Buckley, KDOT’s State Highway Safety Engineer. “Local coalitions bring individuals and organizations together within a community to identify traffic safety concerns specific to the community and personalizes the work that the coalition does. This builds buy-in and ownership locally as members work to keep their friends, family and community safe.”



The occupants of this vehicle survived the crash.



Because the coalitions are locally organized and led, Buckley expects that each coalition will be as different as the communities are across the state. “Some coalitions might organize at the city level while others may organize at the county level,” Buckley said.

“While one coalition might be addressing seat belt usage, another might be addressing distracted driving or railroad crossing safety.”

KDOT’s role in the coalition is to find local champions that are interested in improving traffic safety in their community using the 4E’s of traffic safety: education, enforcement, engineering and emergency services. KDOT is also available to provide support, presentations, resource ideas and crash data, and in some situations, funding.

For example, the agency can assist with funding for behavioral programs like SAFE (Seatbelts Are for Everyone) - a student initiative aimed at getting students to buckle up - and for enforcement initiatives aimed at reducing speeding and drunk and distracted driving.

To start a Traffic Safety Coalition, visit <http://www.ksdot.org/burTrafficSaf/kstrafficsafetycoalitions.asp> or contact Lisa Hecker at 785-296-0845 or lisa.hecker@ks.gov.

KTA

KTA Briefs:

♦ Construction of two new bridges at mile marker 0.6 on I-35/KTA, near the Oklahoma border has begun. The project should be complete in mid-November, weather permitting. Learn about the project [here](#).

♦ A polymer overlay and expansion joint work on the Arkansas River bridges, located at mile marker 44.325 on I-35/KTA in south Wichita, is set to begin this week. Travelers should expect single lane traffic in each direction and reduced speeds. Learn more [here](#).

Kansas Transportation

Monday, March 5

Severe Weather Awareness Week: Driving tips



Anyone who has lived in Kansas long enough understands that severe weather can hit fast and it can be devastating. Damaging winds, large hail, flash floods and even tornadoes are common threats that we all know too well. Severe Weather Awareness Week, which is taking place this week in Kansas, is a time to remind drivers to be safe in severe weather situations.

Below are a few safety tips to keep in mind when driving or preparing to drive. First and foremost - be prepared and be patient.

When driving in rain, remember - wipers on, headlights on. It's a Kansas law.

During severe weather, flash floods may occur.

Never try to cross a flooded road way - turn around, don't drown.

Turn off cruise control - road conditions during severe weather are inconsistent. You need to be in control, not your vehicle.

Take shelter during a hail storm, whether it's in a

vehicle or a building. If driving, pull to side of the road.

Watch for flying debris in high winds. High winds can pick up items that become dangerous weapons if they should hit your or your vehicle. Driving during a tornado - don't. Never try to outrun a tornado, and don't drive during one either. Get out of your car and find shelter. If none can be found, get below the road's surface and cover your head. A ditch or low area is suggested. Be aware of the water level around you and be on the lookout for flash floods. Never seek shelter in an underpass.

In every weather situation it is best to buckle up - every trip, every time - and pay attention to your environment.

To see more stories on transportation topics, check out the regular posts on the Kansas Transportation blog at <http://kansastransportation.blogspot.com/>

Have an idea for a news brief or picture that could be featured in an upcoming edition of Translines Express?

Please e-mail your suggestions to Kim.stich@ks.gov

District Four

KDOT Director of Operations Larry Thompson takes questions from employees during the 2018 District Four Construction & Materials Meeting that took place Feb. 28 at Chanute. Construction/materials staff members from the District complex and four Area Offices were updated on agency activities and field practices throughout the day. Speakers included State Transportation Engineer Catherine Patrick, Construction and Materials Bureau Chief Greg Schieber, District Construction Engineer Jim Metcalfe, plus other Headquarters and District staff.



Aviation Day



Various displays illustrated aviation opportunities across the state at the fourth annual Aviation Day at the Capitol on March 1.



Sen. Mike Petersen, Chairman of the Senate Transportation Committee, chats with Secretary Richard Carlson at the Aviation event.

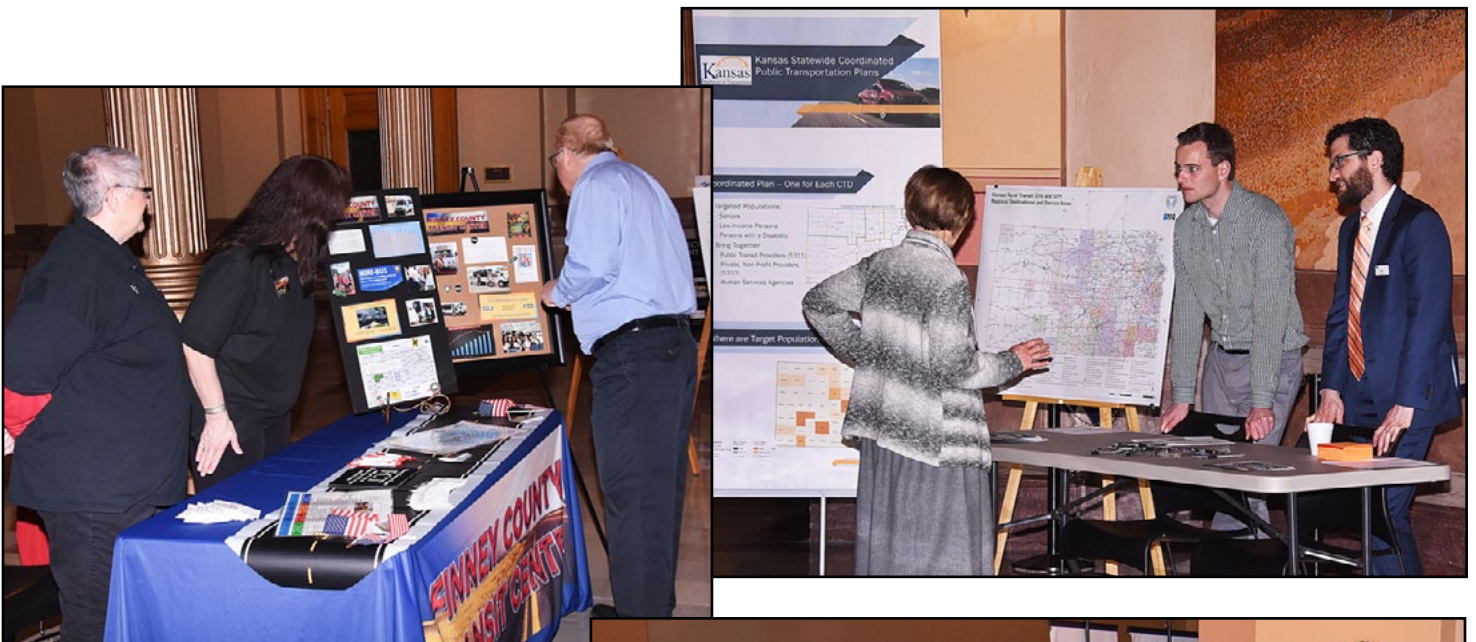


Trivia!

Counties

1. This county was named after the man who served as Governor of Kansas from 1865 to 1868. He resigned to take command of the 19th Kansas Regiment.
2. This county was named after the man serving as Lt. Governor in 1883.
3. This county was named after the man who served as the chief justice of the Kansas Supreme Court, and first president of the Kansas State Historical Society.
4. This county was named after the General who was a hero in the War of 1812 and the Black Hawk War. He also was commander of the U.S. forces in the Mexican War and the first general-in-chief of the Union armies in the Civil War.
5. This county was named for the General who was active in the post-Civil War Indian campaigns on the plains.
6. This county was named after the famed founder and editor of the New York Tribune. He is best remembered for his advice, "Go west, young man."

Transit Day



Visitors stopped by numerous booths for Transit Day at the Capitol on Feb. 28 to learn more about different transportation opportunities across Kansas.



District Four



Robert Moore and Brendan Williams of J & J Contractors, Inc., wave from the scene of a guardrail repair project on the Delaware (Tank Farm) Road bridge at the U.S. 169/ Delaware Road interchange in Allen County. A section of the original bridge rail was damaged in a crash last year. The \$37,000 repair should be finished by mid-March. Wade Park, of the Iola office, is the KDOT inspector on the project.

In Memory

Condolences to the family and friends of retiree John Jimenez who passed away Feb. 9 in Lawrence. He served in World War II. Jimenez worked for KDOT for more than 39 years as an Engineering Geologist, retiring in 1994.

Correction

Correction: The last edition of Translines said Equipment Operator Tony Worek is from the Colby Subarea. Worek actually works at the Oakley Subarea office.

TRIVIA ANSWERS

1. Crawford County – Samuel J. Crawford.
2. Finney County – David W. Finney.
3. Kingman County – Samuel A. Kingman.
4. Scott County – Gen. Winfield Scott.
5. Sheridan County – Gen. Phillip Sheridan.
6. Greeley County – Horace Greeley.