

Translines EXPRESS

Jan. 11, 2017

State of the State



Gov. Sam Brownback addresses the 2017 Kansas Legislature during the State of the State speech at the Capitol on Tuesday.

District Four



Although not quite finished, the northern four miles of the 11-mile K-7 modernization project reopened to traffic in late December. This section runs from K-102 north to U.S. 400 in Cherokee County, and had been closed since last spring. In 2017, the second and final K-7 section from K-102 south to U.S. 160, will close for reconstruction. Koss Construction of Topeka is the primary contractor on the \$35.2 million project. Thomas Rhoads' road squad and Chris Meyer's bridge squad designed the project.

District One



A KDOT dump truck was struck by a pickup truck on I-70 on Jan. 5 while the driver, Supervisor Jerry Cox, was clearing snow from the shoulder.

Winter weather incident: KDOT Alma Subarea Supervisor Jerry Cox was clearing snow from the left shoulder of westbound I-70 near mile marker 320 in Riley County on Jan. 5 when he was struck from behind by a pickup truck.

Cox was shaken up, but was ok. However, the driver of the pickup truck was airlifted to an area hospital with unknown injuries. The top of the pickup truck was sheared off in the incident.

The dump truck received extensive damage to the rear section rendering the truck inoperable, thus it has been taken out of service.

Damage includes a hole in the fuel tank, bent rear axle, two ruined rims and tires, all hydraulic hoses cut and toolbox bent.

SAFE

SAFE donation and safe ride:

Actor Eric Stonestreet, who stars in television's "Modern Family, got a safe ride to his parents' house and the Kansas Seatbelts Are For Everyone (SAFE) program got a \$5,000 donation – a win/win for both. It all began in mid-December when Stonestreet started following Kansas Highway Patrol Trooper Ben Gardner on Twitter. After teasing that he'd better not get any speeding tickets, Stonestreet tweeted a request for a ride to his parents' house from the airport in Kansas City when he was coming home for Christmas.

"I took that initial tweet as fun and just playful interaction," Gardner said. But we started direct messaging and said he'd make a donation to a safety program, Gardner said. So then Stonestreet sent a tweet saying he'd make the \$5,000 donation to the SAFE program.

Gardner is based in Salina and couldn't make the trip to Kansas City, so he recruited Trooper Candice Breshears and Trooper Cory Beard to assist. And on Dec. 23, Stonestreet was given a ride straight to his parents front door in the Kansas City metro area. The



Actor Eric Stonestreet, center, poses with KHP Troopers Cory Beard, left, and Candice Breshears on Dec. 23 as he gets a safe ride home to his parents and makes a donation the Kansas SAFE program.

story even was featured in People magazine - to see the article and a video embedded in the article of the ride home, click [here](#).

"It was pretty cool," Gardner said. "Eric and I still message back and forth."

Trivia!

Frostbite

1. What areas of the body are most affected by frostbite?
2. Frostbite is caused by extreme cold, and it can occur in this amount of time and temperature range.
3. What are some of the signs of frostbite?
4. What is the difference between the first degree of frostbite to the second degree of frostbite?
5. What is hypothermia?

In Memory

Condolences to the family and friends of KDOT retiree Donald Jarboe who died Dec. 14 in Topeka. He worked for KDOT for 42 years, retiring as the Bureau Chief of Materials and Research.

Kudos

The following notes were sent to District offices -

♦Just want to say huge thanks to the KDOT workers and contractors who worked on the improvements to 400 between Augusta and 99. The new passing lanes are smooth and make the trip even easier. Also, to the Augusta workers and contractors who worked on the medians and lane improvements on 54/400. Smooth and easy? Way to go!!!!

♦Dear KDOT:

It is a pleasure to write to you to tell you of an experience that started out very scary and ended up quite joyful.

While traveling to Topeka on December 23, I lost my Christmas gifts for my family. I called the DOT in Russell and Ellis counties, and the DOT workers from the Hays station found the sack that I had lost. After many phone calls, I received a call from my daughter in Austin, Texas, letting me know the Christmas sack full of envelopes had been found. Two young men, Bruce Arnhold and Jason Gerstner had located the package of presents at I-70 exit 159. These two men make all of us happy to know how honest and hard-working the men of the Kansas DOT are.

I never realized how much these workers do for the state of Kansas. That they took their time out to help me was just amazing.

I do appreciate all the work your department does, and want you to know that the work they do for all of Kansas is very important.

Because of Bruce and Jason, my family had their gifts, we call it a Christmas miracle.

With great appreciation,
Betty Schieferecke, Selden

Railroad Crossings

RR inventory:

Railroad Crossing Training courses took place in December in Topeka, Hutchinson and Hays where almost 40 KDOT employees attended. The training combines time in the classroom plus the field and is conducted by Darlene Osterhaus, KDOT Research Analyst. Last year, 24 counties were inventoried. About 80 attributes were collected at each of the 2,035 highway-rail grade crossings (at-grade, railroad over and under, public and private). For 2017, 18 counties statewide are scheduled to be inventoried that will involve 2,000 crossings.



KDOT employees take notes at a railroad crossing in Hutchinson.

The crossing information has not only been updated in the KDOT database, but also in the Federal Railroad Administration database system, Osterhaus said.

National Award



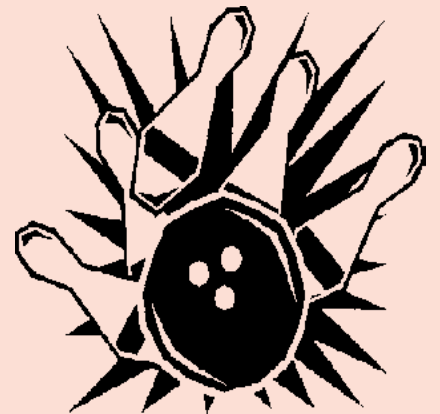
Work on U.S. 36 in Republic County was given national recognition by ACPA.

Award-winning project: A project on U.S. 36 in Republic County has received national recognition from the American Concrete Pavement Association (ACPA). The project recently got a silver award in the state road category of the organization's 27th annual pavement awards for projects completed in 2016 prior to judging.

The 1.2-mile reconstruction effort was two state-tied

projects - a bridge reconstruction and a pavement reconstruction, both near Belleville. Smoky Hill, LLC, of Salina was the contractor on both projects. The project was constructed in five phases and 19 sub-phases, and more than 33,000 square yards of pavement were placed. Debbie Tanking's road squad and Chris Meyer's bridge squad designed the project.

CRAZY BOWL



- **When:** Sunday, Feb. 12, at 1 p.m.
- **Cost:** \$8.50 per person, free shoe rental
- **Deadline to sign up:** NOON, Feb. 8

To sign up: **Bring team money (\$34) to Kim Stich in Public Affairs**

- **Who:** Teams consisting of 4 people (KDOT employees, friends and family members are welcome to participate - it is just for fun)
- **Where:** Gage Bowl (Huntoon Street west of Gage Blvd., Topeka)

What is "Crazy Bowl?" People participating in the Employees' Council Crazy Bowl event bowl three games. The first two games are bowled normally. The third game is the "crazy" part. Each frame is different - one time you bowl backwards, the next time you bowl on one leg, etc. And the only rule is that you relax and have fun!

**For more details
or to sign up,
contact Kim
Stich at 296-
3585 or your
Employees'
Council
representative.**

KTA

Think safety: The KTA announces the second annual design contest for teens in grades 8-12 in conjunction with National Work Zone Awareness Week, which is in April. The winning teen will receive a FitBit Blaze smart-

watch or a \$200 gift card. He or she will also get their art published in VYPE Magazine, the high school sports magazine for central Kansas, including the Wichita area. See rules at www.ksturnpike.com/contests.

2017 NATIONAL WORK ZONE AWARENESS WEEK
DESIGN CONTEST

BE IN THE ZONE,
WHEN THEY'RE IN THE ZONE

EYES ON THE ROAD
HANDS ON THE WHEEL
FOOT ON THE BRAKE

DON'T BE THAT DRIVER

NATIONAL WORK ZONE AWARENESS WEEK

GET YOUR DESIGN IN VYPE MAGAZINE!
WIN A FITBIT BLAZE!
OR \$200 (WINNER CHOOSES)

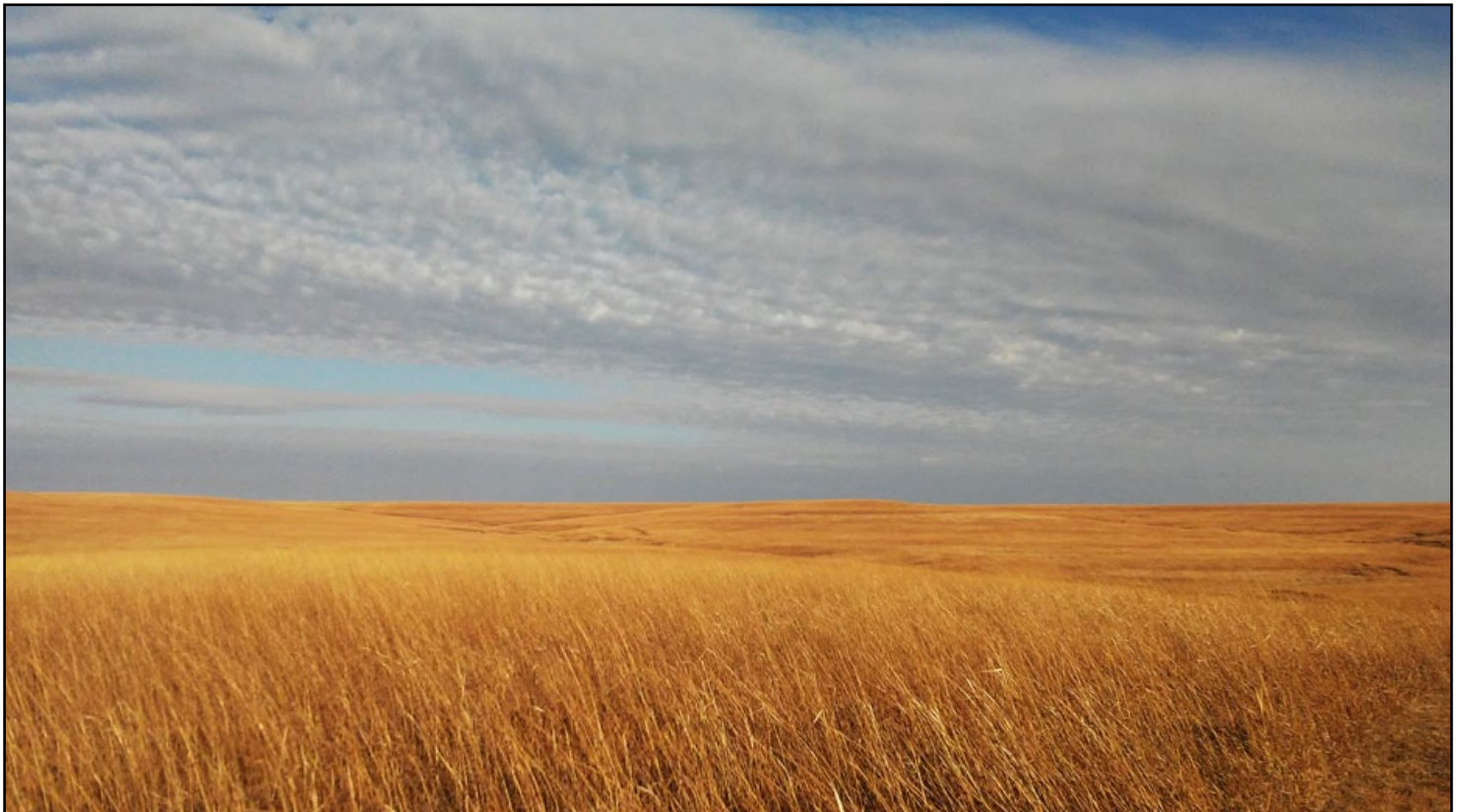
Look alive!
6:00 am

Visit www.ksturnpike.com to see more!

Competition ends in August 2017. All rights reserved. © 2017 KTA. All rights reserved.

Logos for KDOT, KTA, and National Work Zone Awareness Week are visible at the bottom of the poster.

Scenic



KDOT's Jason Wills took this photo of Kansas scenery near Council Grove in south central Kansas on New Year's Day, 2017.

Kansas Transportation

Tuesday, Jan. 3

Car Talk: Could vehicles communicate to prevent crashes?

“Honk! Beep!”

Drivers are familiar with the sound of a vehicle’s horn blaring to get another driver’s attention. But what if the vehicles themselves were part of that communication process? And what if they could actually communicate with each other to keep us safe?

A recent proposal by the U.S. Department of Transportation could do exactly that. Late last year, Secretary of Transportation, Anthony

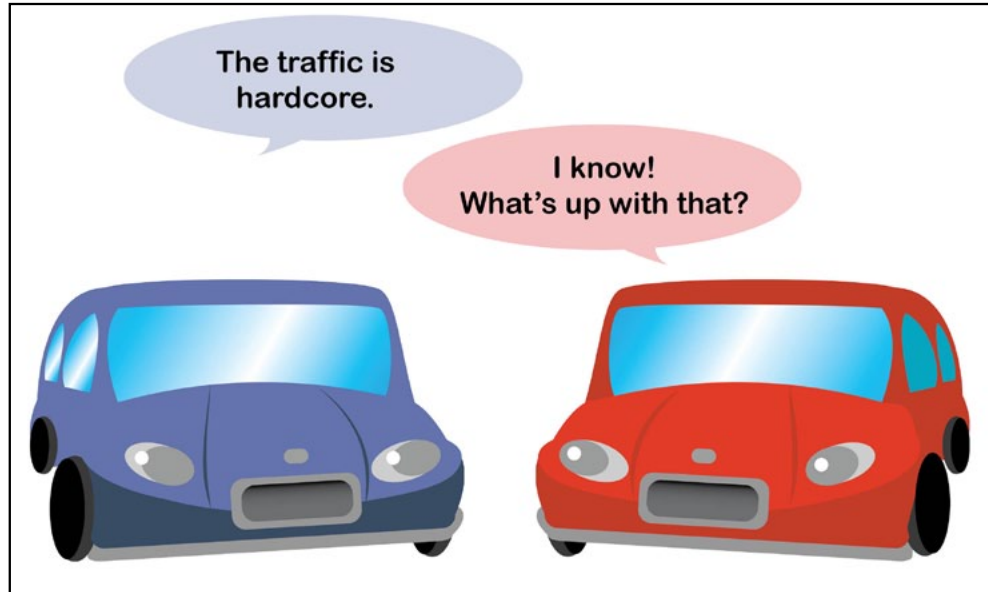
Foxx announced that the department would advance efforts to make vehicle-to-vehicle (V2V) communication a reality.

According to the U.S. Department of Transportation’s press release, Foxx said that the U.S. DOT is carrying the ball as far as they need to ensure that lives are saved and this transportation technology could make a huge difference.

“This long promised V2V rule is the next step in that progression,” Foxx said. “Once deployed, V2V will provide 360-degree situational awareness on the road will help us enhance vehicle safety.”

The new proposed rule would mean that all newer light vehicles would be need to be manufactured with V2V technologies and automakers would be required to ensure that the vehicles would be able to communicate universally through standardized messaging.

V2V devices would use the dedicated short range communications (DSRC) to transmit data, such as location, direction and speed, to nearby vehicles,



the news release said. That data would be updated and broadcast up to 10 times per second to nearby vehicles, and using that information, V2V-equipped vehicles can identify risks and provide warnings to drivers to avoid imminent crashes.

Of the many uses, this technology could provide the driver with much needed information about how safe it is to pass on a two-lane highway and if there is any on-coming traffic that is hard to see. Other situations where it could help are if it would be safe to make a left-handed turn or if another vehicle is close enough to cause a collision.

While this technology could be introduced to newer cars in the near future, there are a few steps that need happen before we will be seeing cars with this feature.

To see more stories on other transportation topics, check out the regular posts on the Kansas Transportation blog at <http://kansastransportation.blogspot.com/>

TRIVIA ANSWERS

1. Nose, ears, cheeks, chin, fingers and toes.
2. An hour of exposure at 20 degrees F. It happens quicker as the temperature is lower and the wind is blowing.
3. Tingling, pain, numbness and changes in the color/

texture of the skin.

4. First degree is signified by irritation and redness; second degree results in clear, painful blisters.
5. When the body’s core temperature falls below 95 degrees F.

District Four

In mid-December, crews from B & B Bridge Company of St. Paul completed a concrete deck pour on the new K-39 Draw Creek Bridge five miles east of Chanute. The entire K-39 project includes replacing the bridge at Draw Creek and the drainage bridge for Big Creek, located 1½ miles east of Draw Creek. Both bridges are being reconstructed on the existing highway alignment with traffic being detoured. The \$1.6 million project will be completed in 2017. Steve Rocker's road squad and John Jones' bridge squad designed the project.



District One

Kansas project featured:

Construction Equipment Guide, an online publication, featured the Johnson County Gateway project in its January edition.

An excerpt from the publication - *Kansas Department of Transportation (KDOT) officials are marking completion of Phase II of the state's largest-ever highway project. Final cleanup is taking place on Johnson County Gateway Phase II, which has been under construction for more than two years at the convergence of Interstates 35 and 435 and K-10.*

"This is the biggest project we've ever done, twice as big as the last one, and it gives our folks an opportunity to work on something big," said Paul Gripka, KDOT project director. "We have field guys who have been here for 10 to 15 years, and some for whom this is their first year with us. This lets us prepare for the future."

More than 230,000 vehicles travel the Gateway



The Gateway project was featured in Construction Equipment Guide.

corridor daily. Gripka said intricate planning for the \$288 million project was crucial.

See more of the story here - <http://www.constructionequipmentguide.com/phase-ii-of-joco-complete/32088>