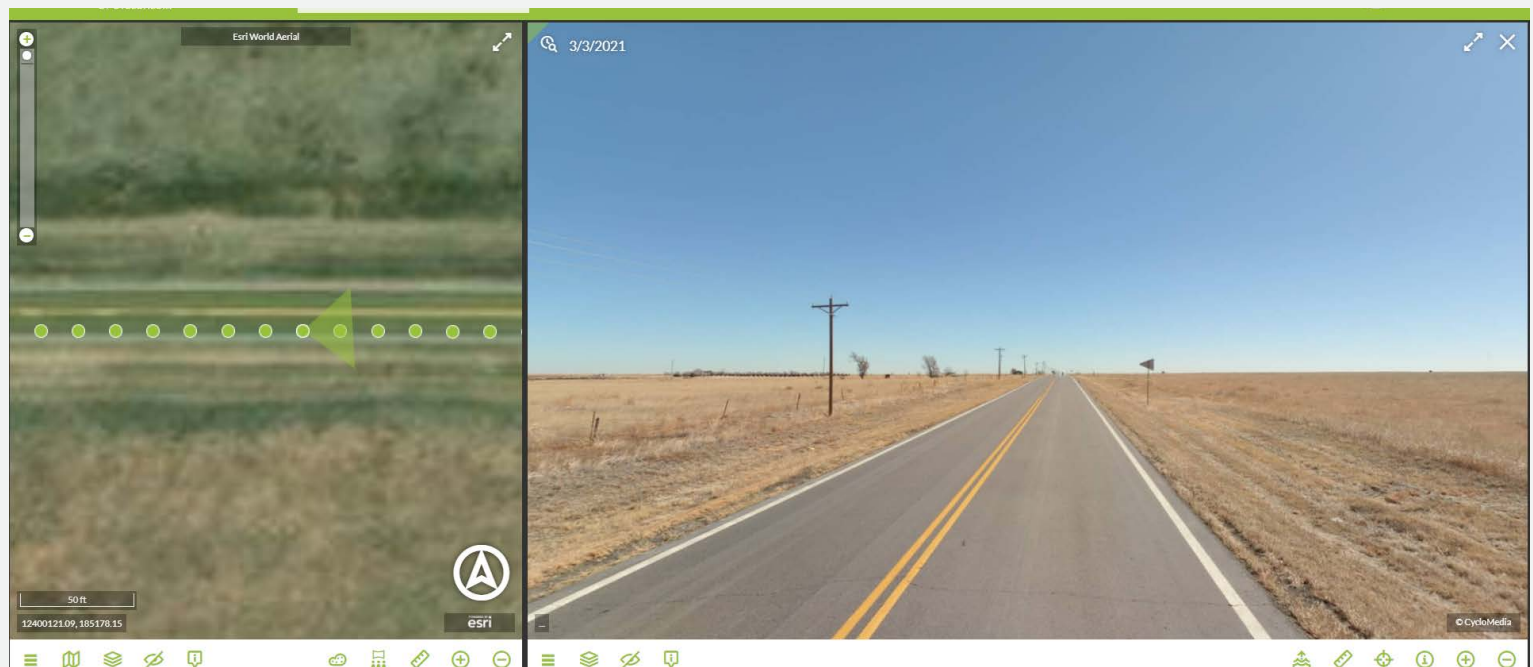


# EN ROUTE TO FRIDAY

March 26,  
2021

## The road to staying connected

KDOT partners with National Highway Traffic Safety Association to collect LIDAR data



A screenshot of Street Smart, a program used to measure lane widths. **Graphic by: Dwayne Wiginton**

KDOT is the first state agency to partner with NHTSA on a project collecting Light Detection and Ranging (LIDAR) data for all of the centerline miles in Kansas. One of the leading causes for fatal and serious injury crashes is roadway departure.

Evaluating past and future crashes requires a robust inventory of roadway assets.

The 3D roadway imagery and LIDAR, along with Artificial Intelligence (AI) driven data extraction will provide KDOT with views of the transportation system and the ability to extract inventory information about Kansas roadway assets.

In addition to these roadside data elements, KDOT will have a complete LIDAR data set of the entire system allowing more roadside elements to be reviewed such as bridge clearance, cross slopes of highways and sign inventory.

This information, coupled with crash statistics, will be an invaluable tool when assessing data on roadway departures and intersection incidents, which will ultimately help to reduce crashes and fatalities.

The project will target all 10,500 centerline miles of the state highway system and is expected to wrap up in September.

# WOMEN In Kansas TRANSPORTATION



March is Women's History Month and KDOT is highlighting women who work hard to help keep Kansas moving.

Kathleen Rogneby has been working with KDOT as an Equipment Technician in Liberal since 2019.

She has several favorite memories while working with her co-workers. "I work with a bunch of great guys," Rogneby said. "They have become family to me. They have taught me not only about the job, but about myself. Lots of good times and laughs have been shared."

One safety reminder she would like share with everyone is, "Be aware of your surroundings. Not only for yourself but your co-workers also."

When not working, Rogneby said she enjoys crafting, decorating and making wood signs for family and friends.

## State of Kansas now in Phase 3 of Covid-19 Vaccine Plan



The State of Kansas has moved to Phase 3 of the COVID-19 Vaccination Prioritization Plan.

State of Kansas employees will now have the opportunity to receive vaccines in the coming weeks.

All existing policies and guidance related to COVID-19 must still be followed.

More information on the vaccine and Kansas' plans for distribution can be found at: <https://bit.ly/3tUKisw>

*Please note that State of Kansas employees are not required to be vaccinated.*

Now that the State of Kansas has moved to Phase 3 and 4 of the COVID-19 Vaccination Prioritization Plan, state employees will be offered the opportunity to receive vaccines.

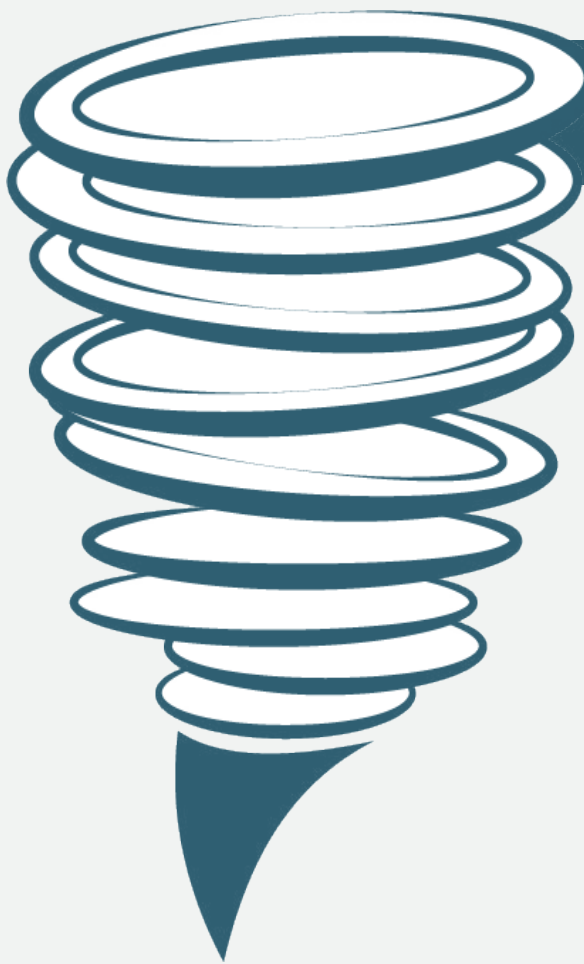
Due to the number of employees in Phase 3 and the expected availability of vaccines, this process will take several weeks.

KDHE will notify agencies approximately a week in advance of when employees will be able to schedule appointments for vaccinations. Agencies will then distribute that information to employees.

Employees who have difficulty scheduling vaccinations in counties other than Shawnee may contact Kami Cusick at [Kami.Cusick@ks.gov](mailto:Kami.Cusick@ks.gov) or by phone at (785) 296-3487. She will coordinate with KDHE for assistance.

It is important to remember that even after being vaccinated, current guidance around hand washing, remote work, social distancing, larger group gathering limitations, and face masks must continue to be followed until further notice. Employees should watch for further vaccination details via email.

## Tornado safety tips



### GET AHEAD OF TORNADOES *Tornado Safety Tips*

Know where you are going before one strikes

#### Plan your best safety option now -

- Identify the safest room/location in your house, and locate an alternate safe tornado shelter option if possible. Stay away from windows.
- Have your cell phone charged and ready, and have a weather radio handy.
- If you have a personal tornado shelter, make sure it has basic supplies: non-perishable food, water and medication
- **After the storm**
  - Roadways could be flooded and debris could make travel difficult.
  - Power lines could be down as well, be aware of your surroundings
  - For more information, click [here](#).

It's that time of year that every Kansan is familiar with: tornado season.

The best way to stay safe during a tornado is to have a plan and review it early each spring. First, identify the safest room/location in your house, like an inside room without windows on the lowest floor of the house, or in a basement. If you live in a mobile home, find another place to shelter. Some trailer parks have storm shelters built specifically for severe weather events.

Have your cell phone charged and ready, but don't rely on just your phone for information as Internet and cell service could be interrupted. Make sure you have fresh batteries for a radio, TV or other device for the latest emergency information. Have an

emergency kit that has non-perishable-food, water and any medicine you may need.

Flying debris is the cause of most deaths and injuries during a tornado. No place is completely safe during a tornado, but there are safer locations than others.

A small room will provide a little more structural support if the building comes down. Windows are particularly dangerous since flying glass can inflict a lot of damage. Climb under something sturdy to help protect you from falling or flying objects and cover yourself with a blanket or mattress.

If a tornado does strike, power lines may be down, flooding can happen and another storm could hit. Be aware as you exit the aftermath.

26<sup>TH</sup> Annual

You're Invited to Attend the **VIRTUAL**  
KDOT Transportation Safety Conference

**APRIL 20 & 21, 2021**

Register here: <https://bit.ly/3cJbZip>