

IMMEDIATE RELEASE

Sept. 30, 2022

For more information:

Delaney Tholen

785-817-9365

delaney.tholen@ks.gov

K-32/Turner Diagonal Freeway/Kaw Drive interchange bridge replacement project begins Monday in Wyandotte County

Work at the K-32/Turner Diagonal Freeway/Kaw Drive interchange is scheduled to begin Monday, Oct. 3, weather permitting, in Wyandotte County.

The Kansas Department of Transportation (KDOT) project includes replacement of the eastbound and westbound K-32/Turner Diagonal Freeway bridges over Kaw Drive and the Union Pacific Railroad lines.

Work will take place daily, Monday through Friday, from 7 a.m. to 3:30 p.m.

Lane closures are scheduled on eastbound and westbound K-32/Turner Diagonal Freeway from approximately 65th Street to 59th Lane. Work is scheduled in multiple phases with traffic control placed first to prepare for bridge replacements.

Crossovers will be built to carry eastbound and westbound traffic head-to-head through the work zone. Bridge work will begin in March 2023.

Impacts to traffic are as follows:

Phase 1 (September – November 2022): lane and shoulder closures during work hours; single lane to be open at all times;

Phase 2 (March – November 2023): various ramp closures; single lane K-32/Turner Diagonal Freeway traffic will cross over to travel head-to-head; eastbound Kaw Drive closure during bridge demolition;

Phase 3 (March – December 2024): various ramp closures; single lane K-32/Turner Diagonal Freeway traffic will cross over to travel head-to-head; eastbound Kaw Drive closure during bridge demolition.

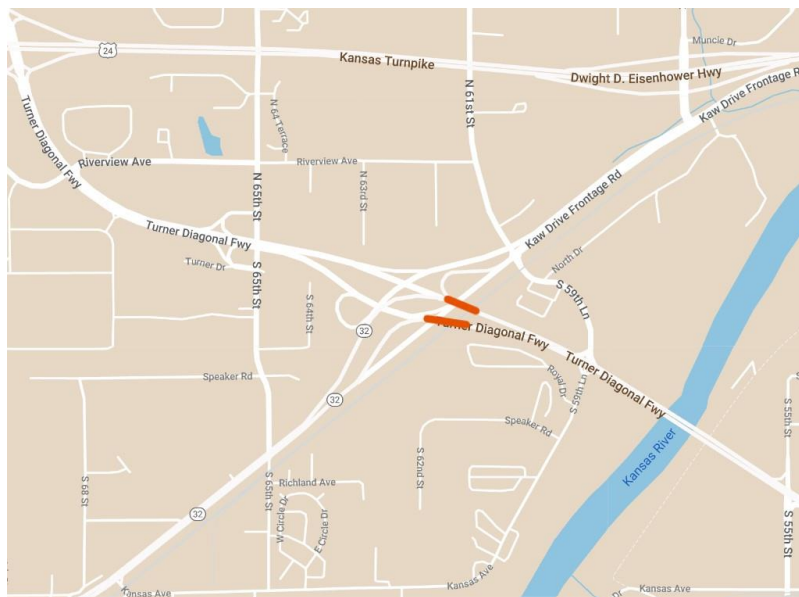
Traffic will be controlled using lane closures, barricades, portable message signs, arrow boards, signage and traffic cones.

Miles Excavating, of Basehor, is the contractor for the \$22.7 million project, which is scheduled to be completed in December 2024.

Project work will shut down from November 2022 to March 2023 and from November 2023 to March 2024 for the winter seasons.

KDOT urges all motorists to be alert and obey the warning signs when approaching and driving through a highway work zone. To stay aware of all road construction projects across Kansas go to www.kandrive.org or call 5-1-1. Drive safely and always wear your seat belt.

Map below shows project locations marked in orange.



###

This information can be made available in alternative accessible formats upon request. For information about obtaining an alternative format, contact the KDOT Office of Public Affairs, 700 SW Harrison St., 2nd Fl. West, Topeka, KS 66603-3745 or phone 785-296-3585 (Voice) / 7-1-1 (Hearing Impaired).

Click below to connect to KDOT's Social Networks:

