

An update on KC Metro highway projects

Week of June 13, 2022
Updated June 13

Contact: Delaney Tholen, delaney.tholen@ks.gov
NE Kansas KDOT: [Kansas City Metro releases](#) [Kansas City Metro Projects List](#)
Facebook: [/NEKansasKDOT](#) Twitter: [@KansasCityKDOT](#)
Nextdoor: [Kansas Department of Transportation – District 1](#) KDOT: www.ksdot.org

For additional road condition details, check KDOT's updated traveler information website, www.KanDrive.org.

JOHNSON COUNTY

KDOT short-term closures:

NB and SB K-7, Harold St. to K-10, June 3 – 17, NEW – UPDATED. Alternating lane closures for pothole patching from 9 a.m. to 3:30 p.m.

SB I-435 at 87th St., June 15 – July 15, NEW – UPDATED. Ramp closed (SB I-435 to 87th St. exit ramp) for ramp widening work.

KDOT construction projects affecting traffic:

Johnson Dr. at I-435, start date May 17, ONGOING. Bridge project; work includes bridge girder repair caused by vehicle crash. **Please see “Short-Term Closures” for applicable daily closure info; Johnson Dr. to SB I-435 entrance ramp is fully closed to traffic for duration of project.** Work will occur Monday through Friday during daylight hours, and Saturdays as necessary, with occasional overnight work. All through lanes will be open to traffic Monday through Friday, from 6 a.m. to 9 a.m. and 3 p.m. to 7 p.m. Project completion expected by mid-June.

SB U.S. 69 at 179th St., start date April 18, ONGOING. Bridge deck repair project; work includes replacing damaged concrete and placing a concrete overlay. For the duration of the project, SB U.S. 69 traffic will be reduced to a single lane in the work zone with a 13-foot lane restriction. Work will occur Monday through Friday during daylight hours, and Saturdays as necessary. Project completion expected by early September.

Renner Rd. at I-435, start date March 18, ONGOING. Bridge deck reconstruction project; improvements include bridge deck replacement, repainting bridge girders and enhancement of bridge lighting. **Please see “Short-Term Closures” for applicable daily closure info; Renner Rd. at I-435 is fully closed to traffic for duration of project.** Work will occur Monday through Friday from 7 a.m. to 4 p.m., and Saturdays as necessary, with occasional overnight work from 7 p.m. to 5 a.m. Project completion expected by late August.

City of Gardner project. U.S. 56/E. Main St. to New Century Pkwy., start date March 1, **ONGOING**. Pavement reconstruction project; improvements include roadway, driveway and sidewalk reconstruction, curb and gutter replacement, additional turning lane and updated traffic signal infrastructure. U.S. 56/E. Main St. will be reduced to one lane in each direction (with 11 ft. restriction) between Sycamore St. and east of Moonlight Rd. for the duration of the project. Access to some side roads from E. Main St. will be restricted. Work will occur Monday through Friday from 7 a.m. to 5:30 p.m., with work on Saturday as needed. Project completion expected by early November.

LEAVENWORTH COUNTY

KDOT short-term closures:

EB and WB K-192, from U.S. 59 to U.S. 73, June 13 – 25, NEW. Traffic reduced to single lane and directed by flagging operation and pilot car from 6:30 a.m. to 7:30 p.m., Monday through Friday, for pavement work.

KDOT construction projects affecting traffic:

EB and WB U.S. 24 (U.S. 40), K-16 to K-32, start date June 3, NEW – UPDATED. Pavement improvement project; work will include pavement patching, asphalt overlay, centerline rumble strip and pavement marking. While work is taking place, EB and WB U.S. 24 (U.S. 40) traffic will be restricted to one lane, with a **12 ft. width restriction**, and directed by flagging operation and pilot car. Work will occur 6 a.m. to 7 p.m., Monday to Saturday; project completion expected by early July.

WYANDOTTE COUNTY

KDOT short-term closures:

NB U.S. 69 (18th St.) at Metropolitan Ave., May 23 – June 17, **ONGOING – UPDATED.** Left lane closed for bridge repair.

NB I-635, Georgia Ave. to Missouri River, May 31 – June 17, **ONGOING – UPDATED.** Traffic reduced to single lane with **12 ft. width restriction** for bridge re-decking work from 8:30 a.m. to 4 p.m., daily. *Project requires change in direction of traffic movements on I-635. Please pay close attention to road signage and message boards. One lane of northbound traffic is routed to the southbound side of I-635; this traffic is separated from southbound traffic using concrete safety barrier.*

EB and WB I-70, 57th St. to 86th St., June 13 – 16, **NEW – UPDATED.** Single lane closures from 6 a.m. to 8 p.m. and double lane closures from 8 p.m. to 6 a.m. for pavement repair.

NB and SB U.S. 69, I-70 to Kansas Ave., June 13 and 15, **NEW.** Single lane closure from 7 p.m. to 5 a.m. for overhead sign work.

WB Central Ave. at I-70, June 13 and 15, **NEW.** Single lane closure from 7 p.m. to 5 a.m. for overhead sign work.

EB I-70, Central Ave. to Fairfax Trfy., June 14, **NEW.** Single lane closure and **ramp closed** (EB I-70 to Minnesota Ave. exit ramp) from 7 p.m. to 5 a.m. for overhead sign work.

EB and WB I-70, I-435 to I-635, June 15, **NEW.** Single lane closure and **ramp closed** (EB I-70 to NB I-435) from 7 p.m. to 5 a.m. for overhead sign work.

WB I-70 at 78th St., June 17, **NEW**. **Ramp closed** (78th St. to WB I-70 entrance ramp) from 7 p.m. to noon for pavement repair.

KDOT construction projects affecting traffic:

I-70 and I-635 interchange, start date June 4, **NEW**. **Bridge deck reconstruction project**; work includes replacement of bridge deck. **WB I-70 to SB I-635 ramp will be closed for duration of project; detours are marked**. Work will occur Monday through Friday from 7 a.m. to 4 p.m., and Saturdays as necessary, with occasional overnight work from 7 p.m. to 5 a.m. **Please see “Short-Term Closures” for applicable daily closure info.** Project completion expected by late December.

EB and WB I-70/78th St. to Lewis and Clark viaduct bridge, start date May 7, **ONGOING**. **Pavement improvement project**; double lane closures on I-70 and **ramps closed as needed** in project area. Work will occur overnight, weather permitting. **Please see “Short-Term Closures” for applicable nightly closure info;** completion expected by early November.

NB and SB I-435/Wolcott Dr. to Holliday Dr., start date April 20, **ONGOING**. **Bridge deck pothole patching**; nightly single and double lane closures on I-435 and **ramps closed as needed** in project area. Work will occur Sunday through Thursday overnight, weather permitting. **Please see “Short-Term Closures” for applicable daily closure info;** project completion expected by mid-June.

NB and SB I-635/K-5 interchange, project resuming March 29, **ONGOING**. **Bridge replacement project**; single lane closures on I-635 and **ramps closed** (SB I-635 exit to SB K-5; NB K-5 to SB I-635). *Detours are marked*. Work will occur Monday to Friday from 8:30 a.m. to 4 p.m. and 7 p.m. to 5 a.m. **Please see “Short-Term Closures” for applicable daily closure info.** Project began in October 2021 and is resuming after a winter shutdown period; project completion expected by December 2022.

Unified Government project; 7th St. and Central Ave., start date March 1, **ONGOING**. **Roadway and intersection improvement project**; work will include new traffic signal at the intersection, widening of the curb radii to better accommodate truck traffic, new asphalt surfacing, storm sewer upgrades, reconstruction of curb and gutter and pedestrian ramps and new pavement markings and traffic signs. On-street parking will not be available along 7th St. during project. **Please see “Short-Term Closures” for applicable daily closure info.** Work will occur 7 a.m. to 6 p.m., Monday to Friday, and Saturdays as necessary; project completion expected by late November.

Stillwell Rd./K-32 to 178th St., start date February 2022, **ONGOING**. **Roadway improvement project**; work includes intersection realignment and turn-lane improvements. Roadway will be closed with signed detour. Work will occur during daylight hours; project completion expected by mid-July.

Unified Government project; Leavenworth Rd./K-5 from 78th St. to 63rd St., start date February 2021, **ONGOING – UPDATED**. **Roadway improvement project**; traffic reduced to single lane with **11 ft. width restriction** using flagging operation and pilot car. Improvements include grading, surfacing and storm sewer work. Work will occur during daylight hours; project completion expected by mid-June.

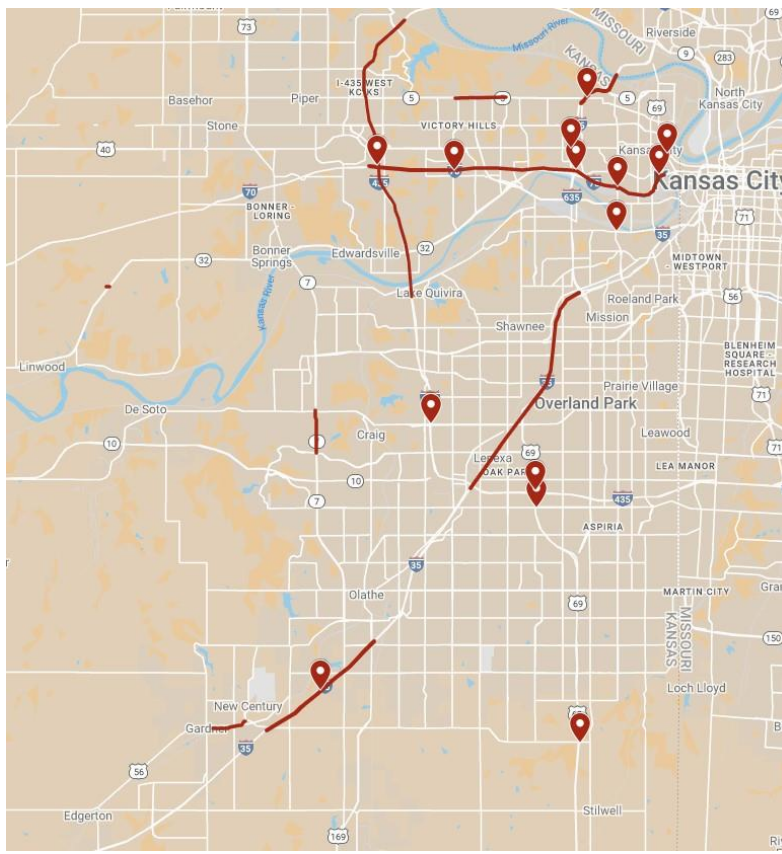
MULTI-COUNTY

KDOT construction projects affecting traffic:

Multiple locations in Johnson and Wyandotte counties; I-35 south of I-635, I-35 (exit 210) KDOT weigh station, I-35 from Roe Ave. to Southwest Blvd., I-35/U.S. 69 (18th St. Expy.) interchange, U.S. 69 at College Blvd., I-435 at West 95th St., I-70 at 57th St. and K-7 at K-32, start date January 2022, **ONGOING – UPDATED. Roadway lighting project; intermittent daily lane and shoulder closures in areas where high mast lights are being replaced. Work will occur during daylight hours; construction activities requiring lane closures will not be permitted between 5 a.m. and 9 a.m. or between 3 p.m. and 7 p.m. Please see “Short-Term Closures” for applicable daily closure info. Project completion expected by mid-June.**

KDOT urges all motorists to be alert and obey the warning signs when approaching and driving through a work zone. Drive safely and always wear your seat belt. Unsubscribe from this email list by emailing delaney.tholen@ks.gov (please include Unsubscribe in the Subject line).

CURRENT KC METRO HIGHWAY KDOT PROJECT MAP



###

This information can be made available in alternative accessible formats upon request. For information about obtaining an alternative format, contact the KDOT Office of Public Affairs, 700 SW Harrison St., 2nd Fl. West, Topeka, KS 66603-3754 or phone 785-296-3585 (Voice) / 7-1-1 (Hearing Impaired).

Click below to connect to KDOT’s Social Networks:

