

An update on KC Metro highway projects

Week of June 7, 2021
Updated June 10

Contact: Delaney Tholen, Delaney.Tholen@ks.gov

NE Kansas KDOT: [Kansas City Metro releases](#) [Kansas City Metro Projects List](#)
Facebook: [@NEKansasKDOT](#) Twitter: [@KansasCityKDOT](#)
Nextdoor: [Kansas Department of Transportation – District 1](#) KDOT: www.ksdot.org

For additional road condition details, check KDOT's updated traveler information website, www.KanDrive.org.

PLEASE NOTE: Work has been paused on City of Olathe I-35/119th St. bridge project. Closures and start date POSTPONED for U.S. 169/7th St. over I-70 bridge project.

JOHNSON COUNTY

KDOT maintenance projects:

NB and SB U.S. 69 from Blue Valley Pkwy. to Miami/Johnson Co. line, May 13-June 18, (ONGOING - UPDATED). Traffic will be reduced to one lane for shoulder pavement overlay from 8 a.m. to 6 p.m., Monday - Saturday. Expect short-term ramp closures as work progresses throughout the day.

Short-Term Closures

NB and SB I-35 at 119th St., June 7-11, (ONGOING). Traffic will be reduced to 2 lanes from 7 p.m. to 6 a.m. nightly for bridge work.

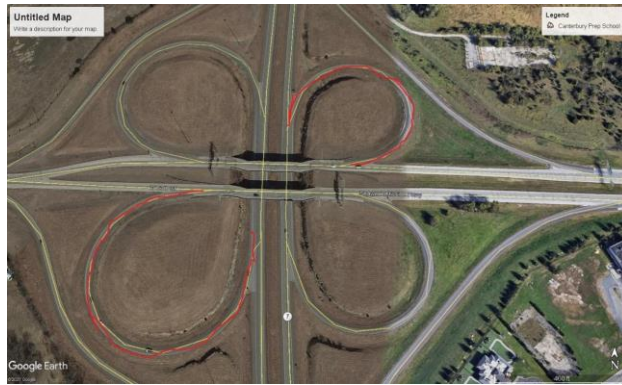
NB and SB I-35, from I-435 to Cambridge Dr., June 10-15, NEW. Alternating mobile lane closures between right two and left two lanes for pothole patching from 9 a.m. to 3 p.m. daily.

NB and SB I-35 at 119th St., June 14-18, NEW. Single lane closures to install falsework. Work will occur from 7 p.m. to 6 a.m. nightly.

KDOT construction projects affecting traffic:

- 1. NB U.S. 69/179th St. to 191st St., start date June 14, NEW.** NB U.S. 69 will be reduced to one lane from 191st St. bridge to 179th St. bridge for bridge repairs. Work will occur 7 a.m. to 5:30 p.m., Monday through Friday, with work on Saturday as needed. Project completion expected by mid-November.

2. **City of Olathe project. WORK HAS BEEN PAUSED /// I-35/119th St. bridge, start date June 1, (ONGOING – UPDATED).** 119th St. bridge will be closed beginning June 1. I-35 will have **daily lane closures**. Right turns onto 119th St. from I-35 and right turns onto I-35 from 119th St. will be allowed. **Please see “Short-Term Closures” for applicable daily I-35 closure info.** I-35 will be reduced to one lane in each direction during bridge demolition. Project completion expected by September.
3. **City of Gardner project. 191st to Gardner Rd., (ONGOING - UPDATED).** Project is addressing potholes on bridge and concrete surface work in preparation for Locust St. project. Bridge over I-35 will be reduced to a single lane that will only permit SB traffic. **Please see “Short-Term Closures” for applicable daily closure info.** When complete, existing intersection at Gardner Rd. and 191st St. will be closed. With addition of Locust St., a north/south street parallel to Gardner Rd., and access to Gardner Rd. will be established at 188th St. Work will occur Monday through Friday during daylight hours, with work on Saturday as needed. Project phase completion expected by early July.
4. **EB and WB K-10 at Lexington Ave. bridge reconstruction, start date May 24 (ONGOING-UPDATED).** A crossover, or temporary asphalt road, will be constructed in the median to redirect traffic onto WB K-10. Once traffic is redirected, the EB K-10 bridge deck installation will begin. **EB and WB K-10, near Lexington Ave., will be reduced to one lane of traffic in each direction, and EB K-10 on-ramp from Lexington Ave. will be closed.** Work will occur Monday through Friday during daylight hours, with work on Saturday as needed. Project completion expected by late November.
5. **U.S. 56 pavement repair project, Moonlight Rd. to I-35, start date May 8, (revised work times and closures) (ONGOING).** Work will include concrete pavement patching and asphalt overlay. EB and WB traffic will be reduced to one lane during hours of work. All lanes of traffic will be open when work is not being performed. Work will occur 7 p.m. to 6 a.m., Wednesday to Friday, and 7 p.m. Saturday to 6 a.m. Monday. **The off-ramp from SB New Century Pkwy. to WB U.S. 56 will also be closed: traffic will be able to access U.S. 56 using Industrial Bypass.** Off-ramp will be closed from 7 p.m. Wednesday to 6 a.m. Thursday. Project completion expected by mid-July.
6. **City of Shawnee project. NB and SB K-7 at 43rd St., start date April 29 (ONGOING).** This section of K-7 will be reduced to one lane for intersection reconstruction. Project completion expected by mid-August.
7. **Bridge deck repair at 67th St./Shawnee Mission Pkwy. over K-7, start date April 12 (ONGOING).** Project includes concrete patching, overlay and expansion joints. **Please be aware that SB K-7 to EB 67th St. ramp and NB K-7 to WB 67th St. ramp will be closed for duration of project.** All other ramps will remain open. Work will occur 7 a.m. to 5 p.m., Monday to Friday and Saturdays as needed. Project completion expected by mid-September. See map below:



8. **199th St. overpass and Waverly Rd., NB and SB I-35 (ONGOING - UPDATED).** 199th St. over I-35 closed between Homestead Ln. and Gardner Rd. for replacement of overpass bridge. Waverly Rd. access to 199th St. from 207th St. also closed. **I-35 will have intermittent daily lane closures.** Project completion expected by October.
9. **U.S. 56 (Shawnee Mission Pkwy.) – (ONGOING) EB U.S. 56 will have right lane closed from 55th St. to Falmouth Rd.** from 9 a.m. to 5 p.m. daily for sidewalk reconstruction. Project completion expected by mid-June.

WYANDOTTE COUNTY

KDOT maintenance:

Short-Term Closures

PROJECT DELAYED /// SB K-7 ramp to K-32, new start date TBD, (ONGOING - UPDATED) Off-ramp will be closed for pavement operations from 6:30 a.m. to 3 p.m.

EB I-70 at Kansas River, June 10-12, NEW. Road will be closed for bridge inspection from 9 a.m. to 3 p.m. EB I-70 traffic will divert to James St./Exit 423B.

NB and SB K-7 from Kansas River to north of Nettleton Ave., June 11, NEW. Left lane will be closed for patching from 8:30 a.m. to 4 p.m.

EB I-70 from I-635 to Park Dr. roadway and NB I-635 ramp to EB I-70, June 14, NEW. Right lane from I-635 to Park Dr. and NB I-635 ramp to EB I-70 will be closed for bridge inspections from 9 a.m. to 3 p.m.

EB I-70 over Kansas River and on-ramp from Fairfax Trafficway to EB I-70, June 14-16, NEW. Left lane and on-ramp 243C will be closed for bridge inspection. Work will take place from 9 a.m. to 3 p.m.

KDOT construction projects affecting traffic:

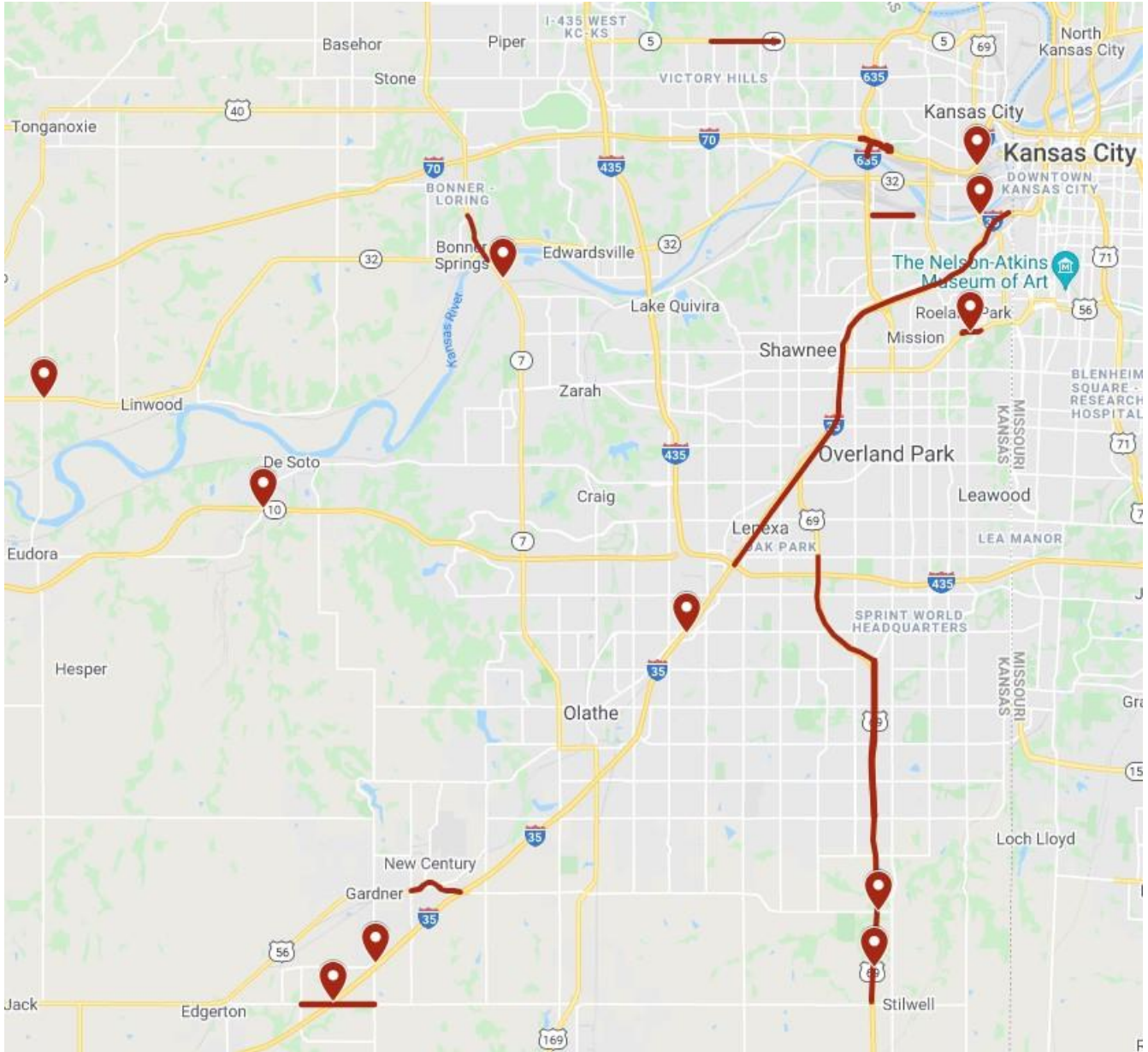
1. **PROJECT DELAYED /// U.S. 169 (7th St.)/I-70, new start date TBD, (NEW - UPDATED).** WB I-70 to SB U.S. 169 (7th St.) exit ramp will be closed; U.S. 169 (7th St.) traffic will be reduced from two lanes to one lane in each direction for bridge maintenance. Ramp closure and lane reduction will remain for duration of project. **Traffic wanting to utilize WB I-70 to SB U.S. 169 (7th St.) exit ramp will be detoured to 18th St. exit and directed back to SB U.S. 169 (7th St.) on**

EB I-70. Detour will be signed. Work will occur 7 a.m. to 3:30 p.m., Monday to Friday, and Saturdays as needed. Project completion expected by mid-October.

2. **PROJECT DELAYED /// K-7 from Kansas River to Elizabeth Ave., new start date TBD, (ONGOING - UPDATED).** Single lane closures will occur on K-7, and ramps will be closed as necessary to allow for paving operations, including asphalt pavement patching, placing treatment on shoulders, and pavement markings. Work will occur during daylight hours Monday to Friday, and Saturdays, as needed. Project will continue through end of July.
TRAFFIC ADVISORY: This mill and overlay project is adjacent to a City of Shawnee ongoing intersection reconstruction project at K-7 and 43rd Street. Traffic delays are expected and drivers are encouraged to find alternate routes.
3. **U.S. 169/7th St./Herman Dillon bridge replacement project. NB/SB U.S. 169/7th St. closed over Kansas River, start date April 12 (ONGOING).** Work will include truss and expansion joint repair on Kansas River bridge, primarily on NB side. Work will occur during daytime hours, Monday to Friday; weekend and night work may take place to close bridge and for placement of traffic control equipment and detour sign. Project completion expected by mid-June.
4. **Unified Government project. Leavenworth Rd./K-5 from 78th St. to 63rd St., start date February 15 (ONGOING).** Two lanes of traffic reduced to one 11 ft. wide lane of thru traffic using flagging operation. Roadway improvements include grading, surfacing and storm sewer work. Work will occur during daylight hours; project completion expected by December 10.
5. **Bike/pedestrian path project (ONGOING). Strong Ave. from 42nd St. to 24th St., along 24th from Strong Ave. to Metropolitan Ave. and along Metropolitan Ave. from 24th to 12th St.** Curb and sidewalk construction will begin on south side of Strong Ave. between 36th St. and 25th St., where on-street parking will not be allowed, sidewalk closed, and pedestrians detoured to north side of road. Once south side is complete, construction will begin on north side of Strong Ave. Parking will not be allowed in areas designated as no parking. Work will occur 7 a.m. to 6 p.m., Monday to Friday and Saturdays as necessary; project completion expected by mid-June.
6. **Intersection improvements at K-32 and 222nd St., west of Linwood, start date April 5 (ONGOING).** Improvements include grading and asphalt surfacing for new lanes. **Traffic will be carried through existing lanes for duration of project, using flagging and pilot car operation.** Signage and traffic cones will also be used. Drivers should expect delays of up to 15 minutes and may want to find an alternative route. Work will occur 7 a.m. to 5 p.m., Monday to Friday and Saturdays, as needed. Project completion expected by end of June.

KDOT urges all motorists to be alert and obey the warning signs when approaching and driving through a work zone. Drive safely and always wear your seat belt. Unsubscribe from this email list by emailing delaney.tholen@ks.gov (please include Unsubscribe in the Subject line).

CURRENT KC METRO HIGHWAY KDOT PROJECT MAP



###

This information can be made available in alternative accessible formats upon request. For information about obtaining an alternative format, contact the KDOT Office of Public Affairs, 700 SW Harrison St., 2nd Fl. West, Topeka, KS 66603-3754 or phone 785-296-3585 (Voice) / 7-1-1 (Hearing Impaired).

Click below to connect to KDOT's Social Networks:

