

Kansas City Metro Office
1290 S. Enterprise
Olathe, KS 66061-5355



phone: 913-942-3100
fax: 913-782-5914
www.ksdot.org

Julie Lorenz, Secretary

Laura Kelly, Governor

An update on KC Metro highway projects

Week of May 10, 2021

Updated May 13

Contact: Delaney Tholen, Delaney.Tholen@ks.gov

KDOT: www.ksdot.org

KanDrive: www.KanDrive.org

NE Kansas KDOT: [Kansas City Metro releases](#)

Facebook: @NEKansasKDOT

[Kansas City Metro Projects List](#)

Twitter: @KansasCityKDOT

Nextdoor: Kansas Department of Transportation – District 1

JOHNSON COUNTY

KDOT maintenance projects:

Northbound and southbound I-35, from I-435 to Cambridge Avenue, May 3-14, (revised work dates) (ONGOING). This section will have alternating lane closures between the right 2 lanes and the left two lanes for pothole patching, from 9 a.m. to 3 p.m.

Northbound and southbound K-7, from K-10 to Kansas River, May 15-16, NEW (UPDATED). Traffic will be reduced to one lane for pavement marking from 7 a.m. to 8 p.m..

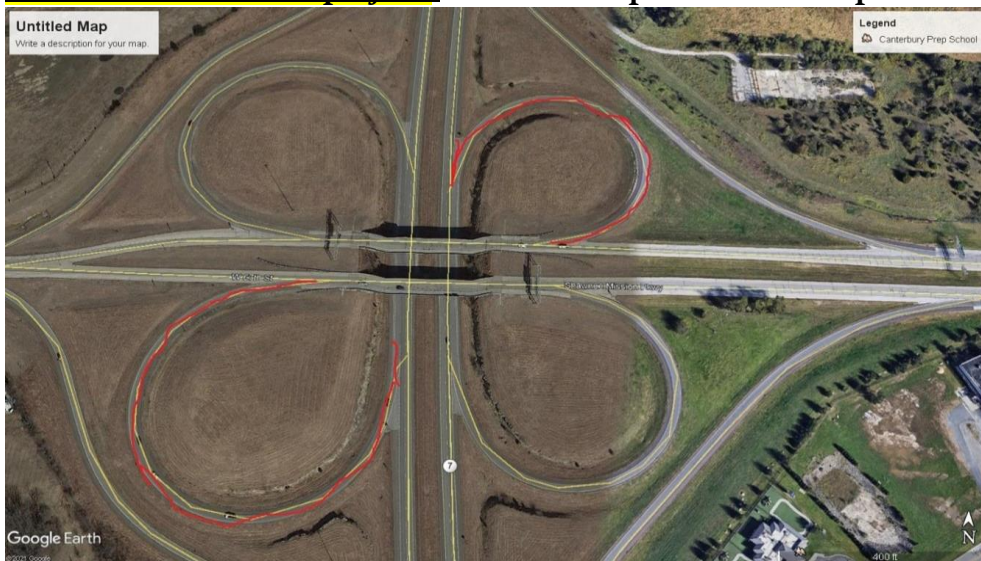
Northbound I-35 at 199th Street, tentative (rescheduled) start date May 21, NEW (UPDATED - POSTPONED). There will be short term lane closures for girder erection from MM 205 to MM 207. There will be a left lane drop beginning at 8 p.m. May 21, weather permitting. Northbound I-35 traffic will need to return to free flow speeds before the next 15-minute closure can take place. Work will take place from 10 p.m. to 8 a.m., weather permitting.

Eastbound Shawnee Mission Parkway at Neosho Lane, May 24-27, NEW (UPDATED). The eastbound right lane will be closed for repair work. Traffic will be shifted through the center turn lane. Work will take place from 9 a.m. to 3:30 p.m., with cones removed at the end of each day.

Northbound and southbound U.S. 69 from 159th Street to Miami County line, May 13-June 18, NEW (UPDATED). Traffic will be reduced to one lane for asphalt overlay from 8 a.m. to 6 p.m.. **Expect short-term ramp closures as work progresses throughout the day.**

KDOT construction projects affecting traffic:

- 1. City of Shawnee project. Northbound and southbound K-7 at 43rd Street, beginning April 29, (ONGOING).** This section of K-7 will be reduced to one lane for reconstruction of the intersection. Work will be completed in mid-August.
- 2. Bridge deck repair at 67th Street/Shawnee Mission Parkway over K-7 in Johnson County, (ONGOING) April 12 to September -** The project includes concrete patching, overlay and expansion joints. The expected completion of the project is mid-September. Work will occur 7 a.m. to 5 p.m., Monday to Friday and Saturdays as needed. **Please be aware that the southbound K-7 to eastbound 67th Street ramp and the northbound K-7 to westbound 67th Street ramp will be closed for the duration of the project.** All other ramps will remain open. See map below:



- 3. K-7 at Old U.S. 56, City of Olathe project –reconfiguring the intersection at Lone Elm/Old U.S. 56. Old U.S. 56 closed, March 1 to June 1. - (ONGOING)** Old 56 will be closed on both the east and west sides of Lone Elm/Parker. Traffic will still be able to drive north/south through the intersection, but all turning movements and east/west travel will be restricted during the closure. (See detour map.)
- 4. 199th Street and Waverly Road - (ONGOING)**
The 199th Street overpass over I-35 between Homestead Lane and Gardner Road

is closed for the replacement of the overpass bridge. Waverly Road access to 199th Street from 207th Street is also closed. This project is expected to be completed by October 2021.

5. US-56 (Shawnee Mission Parkway) – **(ONGOING - UPDATED)** Eastbound will have the right lane closed from 55th St. to Falmouth Rd. from 9 a.m. to 5 p.m. daily for sidewalk reconstruction. This project is expected to be **completed June 4**, weather permitting.
6. **U.S. 56 pavement repair project, Moonlight Road to I-35, to begin May 8, (revised work times and closures) (ONGOING - UPDATED)**. Work will include concrete pavement patching and asphalt overlay. Eastbound and westbound traffic will be reduced to one lane during hours of work. All lanes of traffic will be open when work is not being performed. Work will occur 7 p.m. to 6 a.m., Wednesday to Friday, and 7 p.m. Saturday to 6 a.m. Monday. The off ramp from southbound New Century Parkway to westbound U.S. 56 will also be closed: traffic will be able to access U.S. 56 using Industrial Bypass. The off ramp will be closed from 7 p.m. Wednesday to 6 a.m. Thursday. Project is expected to be completed by mid-July.

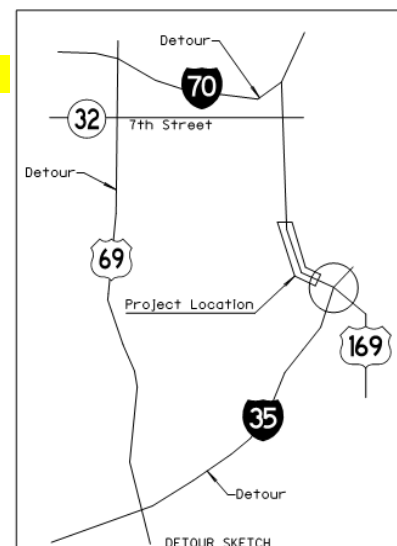
WYANDOTTE COUNTY

KDOT maintenance:

Northbound I-635 ramp to eastbound I-70 AND eastbound I-70 at Park Drive, May 18, NEW. The northbound I-635 ramp to eastbound I-70 will be closed. The right lane will be closed for eastbound I-70 at Park Drive. These closures will allow for bridge inspection on eastbound I-70 at Park Drive. Work will take place from 9 a.m. to 2 p.m..

KDOT construction projects affecting traffic:

1. **U.S. 169/7th St./Herman Dillon bridge replacement project. Northbound U.S. 169/7th St. is closed, southbound over the Kansas River began April 12. (ONGOING)**
 - Work will include truss and expansion joint repair on the Kansas River bridge, primarily on the northbound side.
 - Work will occur during daytime hours, Monday to Friday, and completion is expected in mid-June 2021. Weekend and night work may take place to close the bridge and for placement of traffic control equipment and detour signs.



2. **Unified Government project – for roadway improvements, includes grading, surfacing and storm sewer work. Two lanes of traffic will be reduced to one 11 ft. wide lane of thru traffic using a flagging operation, Leavenworth Road/K-5 from 78th St. to 63rd St. Work will occur during daylight hours, Feb. 15 to Dec. 10. (ONGOING)**

3. **Bike/pedestrian path project in Kansas City –(ONGOING)** Strong Avenue from 42nd Street to 24th Street, along 24th from Strong Avenue to Metropolitan Avenue and along Metropolitan Avenue from 24th to 12th Street. Work will occur 7 a.m. to 6 p.m., Monday to Friday and Saturdays as necessary, **project completion expected end of May.** Curb and sidewalk construction will begin on the south side of Strong Avenue between 36th Street and 25th Street, where on-street parking will not be allowed, sidewalk closed and pedestrians detoured to the north side of the road. Once the south side is complete, construction will begin on the north side of Strong Avenue. Parking will not be allowed in the areas designated as no parking.

4. **Intersection improvements at K-32 and 222nd Street, west of Linwood. (ONGOING) From April 5 to end of June,** improvements will include grading and asphalt surfacing for new lanes. Work will occur 7 a.m. to 5 p.m., Monday to Friday and Saturdays, as needed. The project is expected to be completed by the end of June.

Traffic will be carried through the existing lanes for the duration of the project, using a flagging and pilot car operation. Signage and traffic cones will also be used. Drivers should expect delays of up to 15 minutes and may want to find an alternative route.

JEFFERSON COUNTY

KDOT maintenance:

KDOT construction projects affecting traffic:

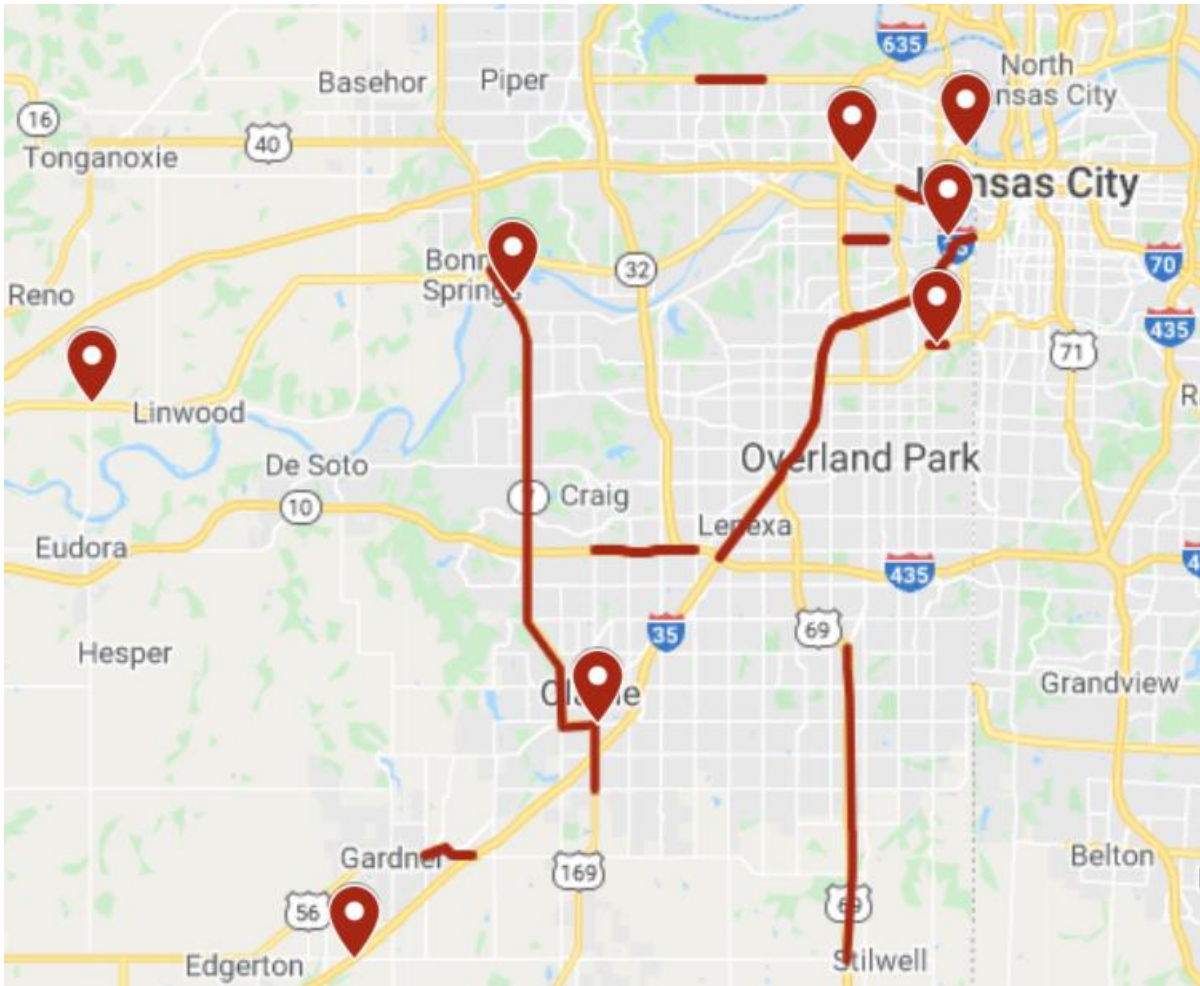
LEAVENWORTH COUNTY

KDOT maintenance:

KDOT constructions project affecting traffic:

For additional road condition details, check KDOT's updated traveler information website, www.Kandrive.org. KDOT urges all motorists to be alert and obey the warning signs when approaching and driving through a work zone. Drive safely and always wear your seat belt. Unsubscribe from this email list by emailing delaney.tholen@ks.gov (please include Unsubscribe in the Subject line).

CURRENT KC METRO HIGHWAY KDOT PROJECT MAP



###

This information can be made available in alternative accessible formats upon request.
For information about obtaining an alternative format, contact the KDOT Office of Public Affairs,
700 SW Harrison St., 2nd Fl West, Topeka, KS 66603-3754 or phone 785-296-3585 (Voice)/Hearing
Impaired – 711.

Click below to connect to KDOT's Social Networks:

