

Northeast District Office
121 S.W. 21st Street
Topeka, KS 66612-1429



phone: 785-296-3881
fax: 785-296-3720
www.ksdot.org

Julie Lorenz, Secretary

Laura Kelly, Governor

IMMEDIATE RELEASE

April 5, 2021

For more information:

Kelly Kultala

(785) 207-0715

Kelly.Kultala@ks.gov

Bridge deck repair at 67th Street/Shawnee Mission Parkway over K-7 in Johnson County to begin April 12

According to the Kansas Department of Transportation, a bridge deck repair project at 67th Street/Shawnee Mission Parkway over K-7 in Shawnee is expected to begin Monday, April 12, weather permitting. The project includes concrete patching, overlay and expansion joints. The expected completion of the project is mid-September.

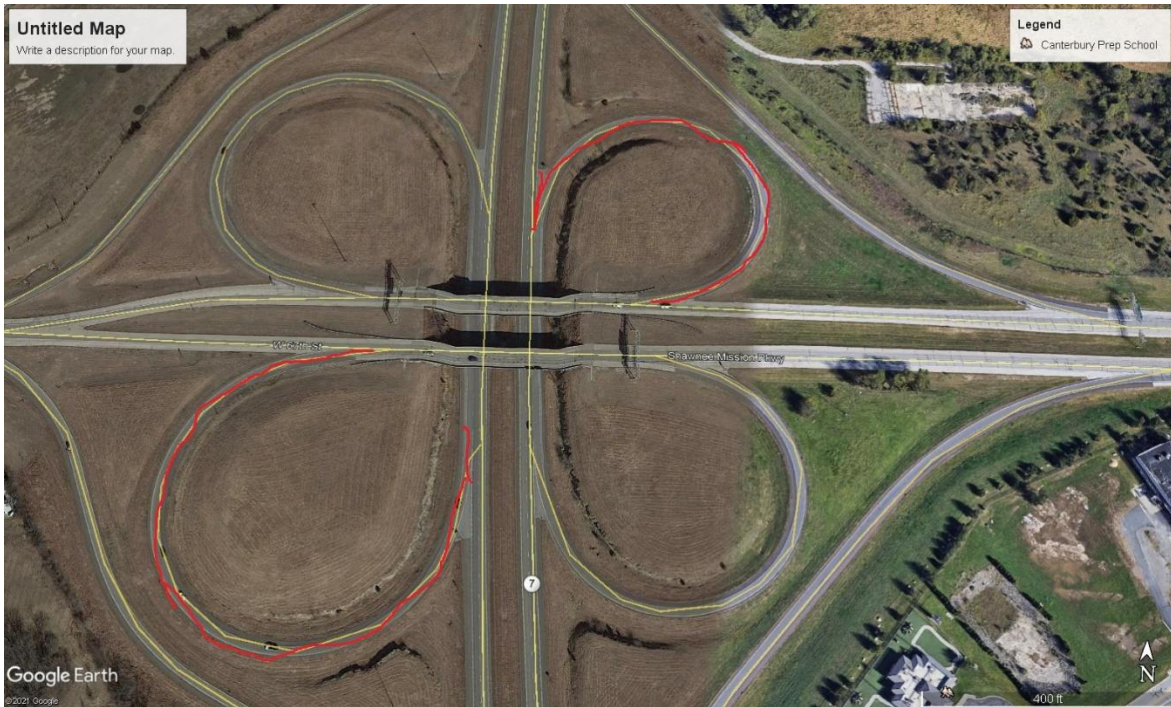
Work will occur 7 a.m. to 5 p.m., Monday to Friday and Saturdays as needed. The southbound K-7 to 67th Street ramp and the northbound K-7 to 67th Street ramps will be closed for the duration of the project. Eastbound and westbound 67th Street will be reduced to one lane.

Traffic will be controlled using signage, barricades, concrete safety barriers and traffic cones.

PCI Roads, LLC, of Topeka, is the contractor on the \$1.2 million project.

KDOT urges all motorists to be alert and obey the warning signs when approaching and driving through a highway work zone. To stay aware of all road construction

projects across Kansas go to www.kandrive.org or call 5-1-1. Drive safely and always wear your seat belt.



###

This information can be made available in alternative accessible formats upon request. For information about obtaining an alternative format, contact the KDOT Office of Public Affairs, 700 SW Harrison St., 2nd Fl West, Topeka, KS 66603-3754 or phone 785-296-3585 (Voice)/Hearing Impaired – 711.

Click below to connect to KDOT's Social Networks:

