

**PLEASE NOTE:** The ramp closures previously listed in the April 5 have been updated. The correct ramp closures for the duration of the project are - the southbound K-7 to eastbound 67<sup>th</sup> Street ramp and the northbound K-7 to westbound 67<sup>th</sup> Street ramp. All other ramps will remain open.

The release below has the correct information.

Northeast District Office  
121 S.W. 21st Street  
Topeka, KS 66612-1429



phone: 785-296-3881  
fax: 785-296-3720  
[www.ksdot.org](http://www.ksdot.org)

Julie Lorenz, Secretary

Laura Kelly, Governor

## **IMMEDIATE RELEASE**

**April 8, 2021**

### **For more information:**

Kelly Kultala, (785) 207-0715, [Kelly.Kultala@ks.gov](mailto:Kelly.Kultala@ks.gov), or  
Kim Stich, [Kim.Stich@ks.gov](mailto:Kim.Stich@ks.gov)

## **Bridge deck repair at 67<sup>th</sup> Street/Shawnee Mission Parkway over K-7 in Johnson County to begin April 12**

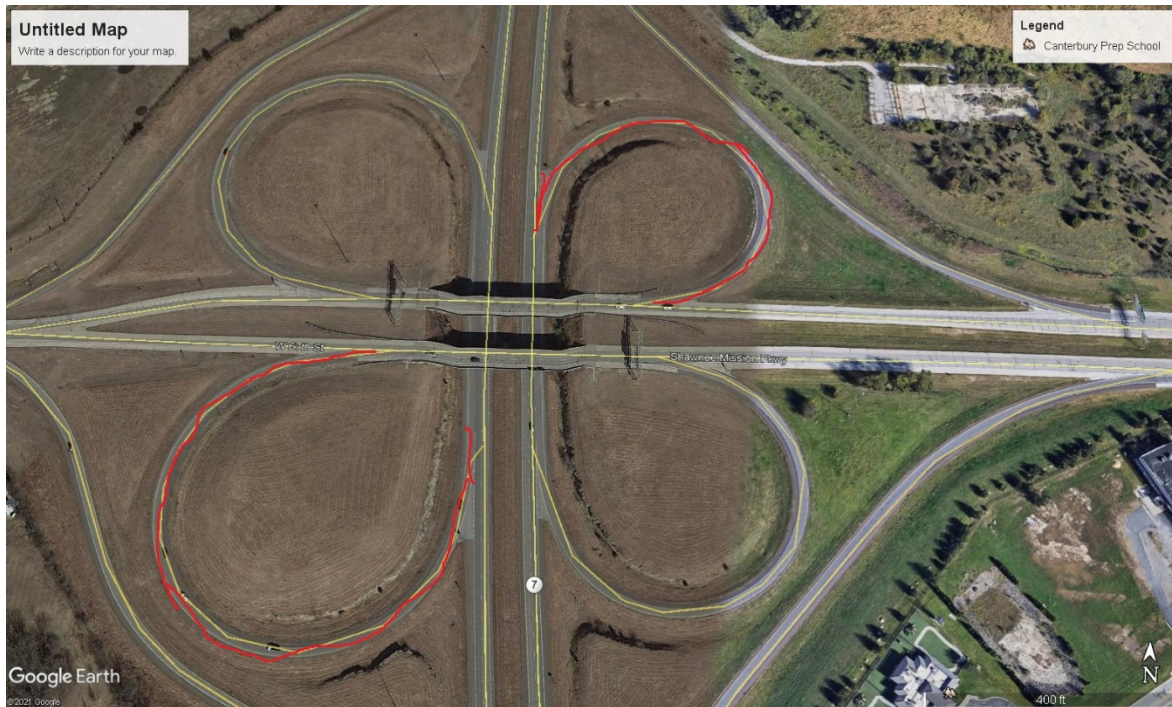
According to the Kansas Department of Transportation, a bridge deck repair project at 67<sup>th</sup> Street/Shawnee Mission Parkway over K-7 in Shawnee is expected to begin Monday, April 12, weather permitting. The project includes concrete patching, overlay and expansion joints. The expected completion of the project is mid-September.

Work will occur 7 a.m. to 5 p.m., Monday to Friday and Saturdays as needed. Please be aware that the southbound K-7 to eastbound 67<sup>th</sup> Street ramp and the northbound K-7 to westbound 67<sup>th</sup> Street ramp will be closed for the duration of the project. All other ramps will remain open.

Traffic will be controlled using signage, barricades, concrete safety barriers and traffic cones.

PCI Roads, LLC, of Topeka, is the contractor on the \$1.2 million project.

KDOT urges all motorists to be alert and obey the warning signs when approaching and driving through a highway work zone. To stay aware of all road construction projects across Kansas, go to [www.kandrive.org](http://www.kandrive.org) or call 5-1-1. Drive safely and always wear your seat belt.



###

This information can be made available in alternative accessible formats upon request.  
For information about obtaining an alternative format, contact the KDOT Office of Public Affairs,  
700 SW Harrison St., 2<sup>nd</sup> Fl West, Topeka, KS 66603-3754 or phone 785-296-3585 (Voice)/Hearing  
Impaired – 711.

Click below to connect to KDOT's Social Networks:

