

Kansas City Metro Office
1290 S. Enterprise
Olathe, KS 66061-5355



phone: 913-942-3100
fax: 913-782-5914
www.ksdot.org

Julie Lorenz, Secretary

Laura Kelly, Governor

IMMEDIATE RELEASE
March 24, 2020

For more information:

Kelly Kultala
(785) 207-0715
Kelly.Kultala@ks.gov

Southbound I-35 bridge project at 151st Street, Olathe begins tomorrow

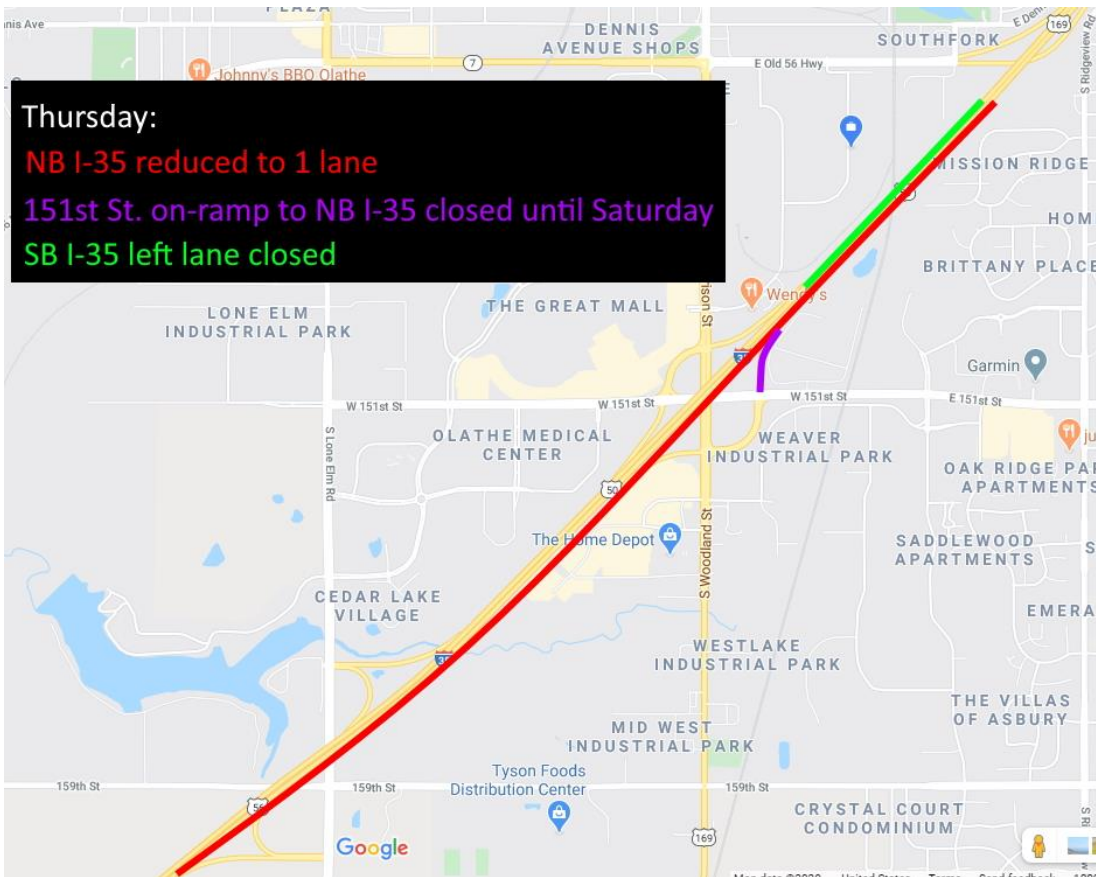
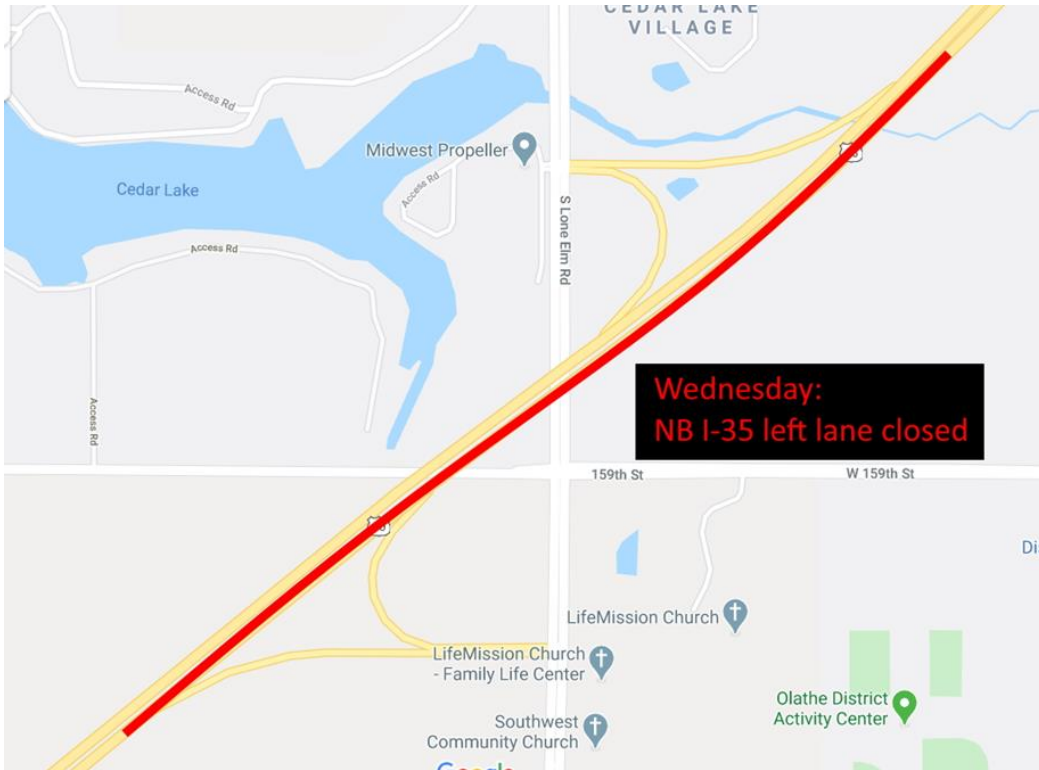
Phase Two of a project to lengthen the I-35 southbound bridge north of 151st Street in Olathe will start Wednesday, March 25, weather permitting. The project is expected to be completed mid-July. Last year, Phase One of this project lengthened the I-35 northbound bridge.

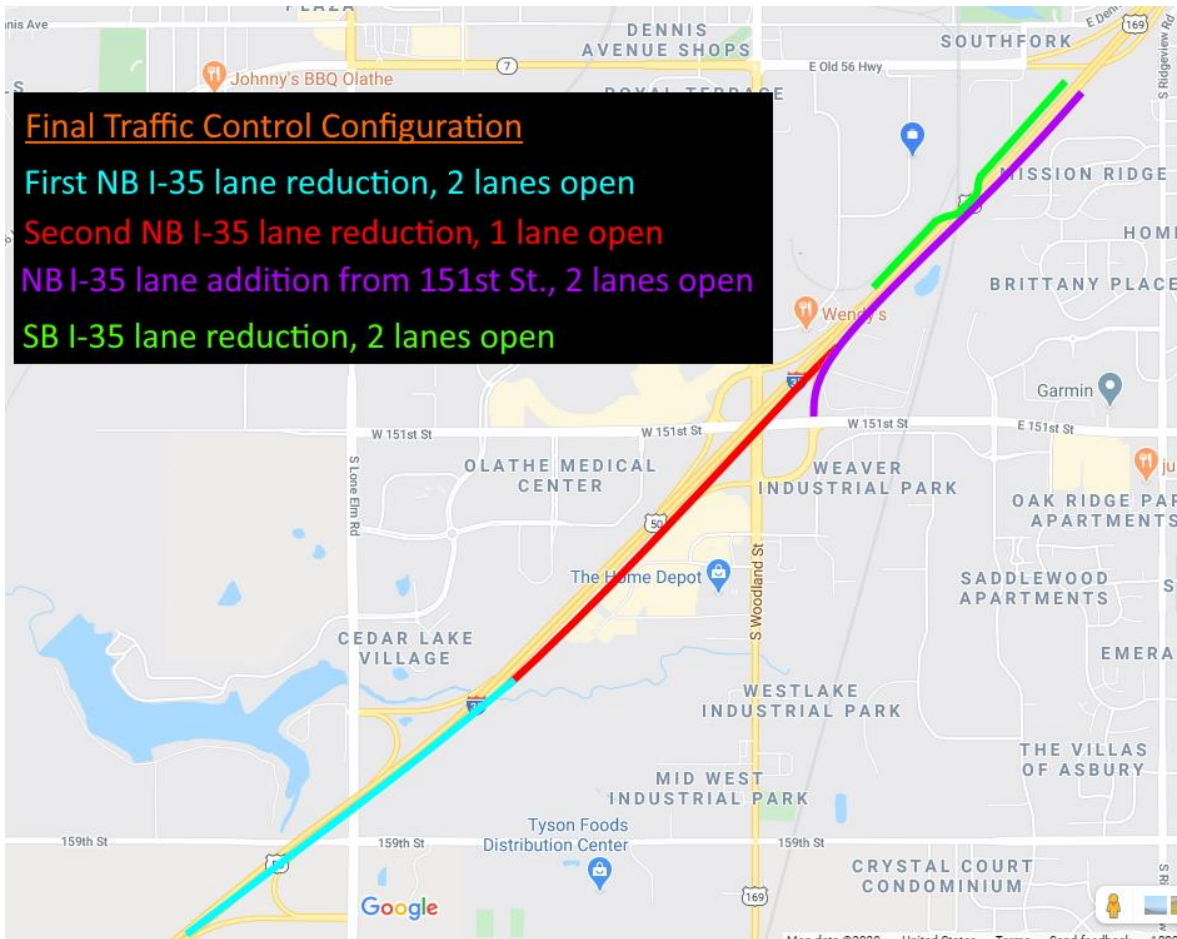
Wednesday, the left lane of northbound I-35 at the South Lone Elm Road interchange will close. On Thursday, the 151st Street/U.S. 169 on ramp to northbound I-35 will close and will reopen Saturday afternoon/evening, March 28. Northbound I-35 will be reduced to one lane from South Lone Elm Road to Old U.S. 56 and southbound I-35 will be reduced to two lanes from East Old U.S. 56 to 151st Street until the project is complete. (See maps below)

Traffic will be instructed to use East Old U.S. 56 and controlled with barriers, traffic cones, signage, arrow boards and digital message boards. Alternative routes are suggested.

Pyramid Contractors Inc. of Olathe is the contractor on the \$7 million project.

KDOT urges all motorists to be alert and obey the warning signs when approaching and driving through a highway work zone. To stay aware of all road construction projects across Kansas go to www.kandrive.org or call 5-1-1. Drive safely and always wear your seat belt.





###

This information can be made available in alternative accessible formats upon request. For information about obtaining an alternative format, contact the KDOT Office of Public Affairs, 700 SW Harrison St., 2nd Fl West, Topeka, KS 66603-3754 or phone 785-296-3585 (Voice)/Hearing Impaired – 711.

Click below to connect to KDOT's Social Networks:

