

Kansas City Metro Office  
1290 S. Enterprise  
Olathe, KS 66061-5355



phone: 913-942-3100  
fax: 913-782-5914  
www.ksdot.org

Julie Lorenz, Secretary

Laura Kelly, Governor

**IMMEDIATE RELEASE**  
**June 23, 2020**

**For more information:**

Kelly Kultala  
(785) 207-0715  
[Kelly.Kultala@ks.gov](mailto:Kelly.Kultala@ks.gov)

**Ramp and lane closures in Jefferson and Wyandotte counties**

Ramp and lane closures are scheduled in Jefferson and Wyandotte counties, Wednesday, June 24, according to the Kansas Department of Transportation, weather permitting. Traffic on all these projects will be diverted using mobile lane closures, signage and traffic cones.

Jefferson County –

For pavement overlay, the closures include:

- Single lane on northbound U.S. 59 from 190<sup>th</sup> Street/Rogers Road to K-4, including the U.S. 59 crossover intersection at K-4. Traffic control will include a flagger and pilot car operation, from 6 a.m. to 7 p.m. on Wednesday, June 24.

Wyandotte County –

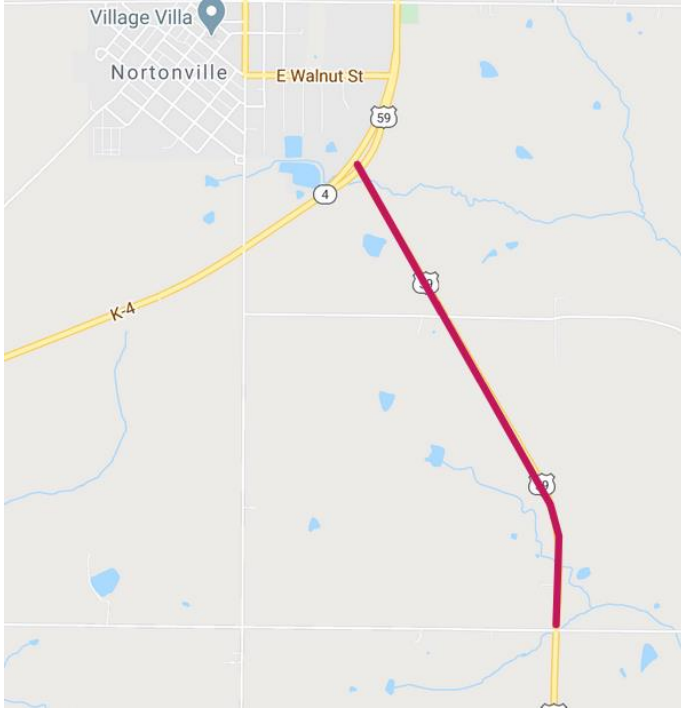
For grading work, the closures include:

- The following ramps, Southbound Turner Diagonal Freeway to westbound I-70, and eastbound I-70 to southbound Turner Diagonal Freeway. Work will occur from 8 a.m. to 3 p.m., Wednesday, June 24.

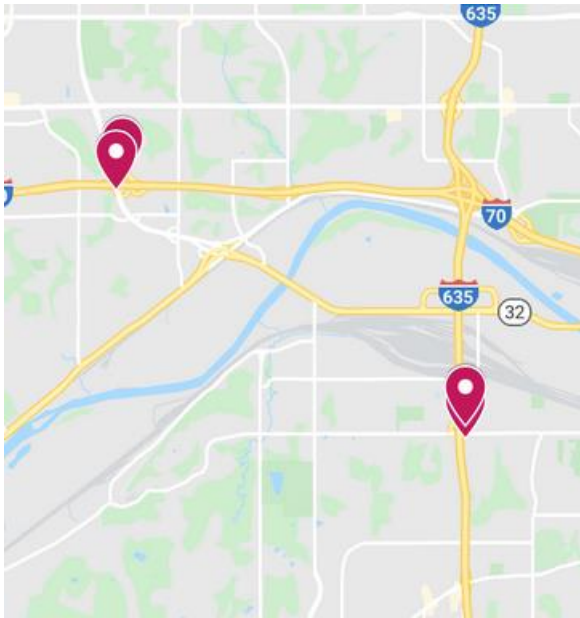
For pavement patching, as part of the I-635 overlay project, the closures include:

- Northbound off ramp to Metropolitan Avenue and the northbound on ramp from Metropolitan Avenue, from 7 p.m. to 5 a.m., Wednesday, June 24.

KDOT urges all motorists to be alert and obey the warning signs when approaching and driving through a highway work zone. To stay aware of all road construction projects across Kansas go to [www.kandrive.org](http://www.kandrive.org) or call 5-1-1. Drive safely and always wear your seat belt.



Jefferson County



Wyandotte County

###

This information can be made available in alternative accessible formats upon request. For information about obtaining an alternative format, contact the KDOT Office of Public Affairs, 700 SW Harrison St., 2<sup>nd</sup> Fl West, Topeka, KS 66603-3754 or phone 785-296-3585 (Voice)/Hearing Impaired – 711.

Click below to connect to KDOT's Social Networks:

