

Kansas City Metro Office
1290 S. Enterprise
Olathe, KS 66061-5355



phone: 913-942-3100
fax: 913-782-5914
www.ksdot.org

Julie Lorenz, Secretary

Laura Kelly, Governor

IMMEDIATE RELEASE
March 12, 2020

For more information:

Kelly Kultala
(785) 296-0192
Kelly.Kultala@ks.gov

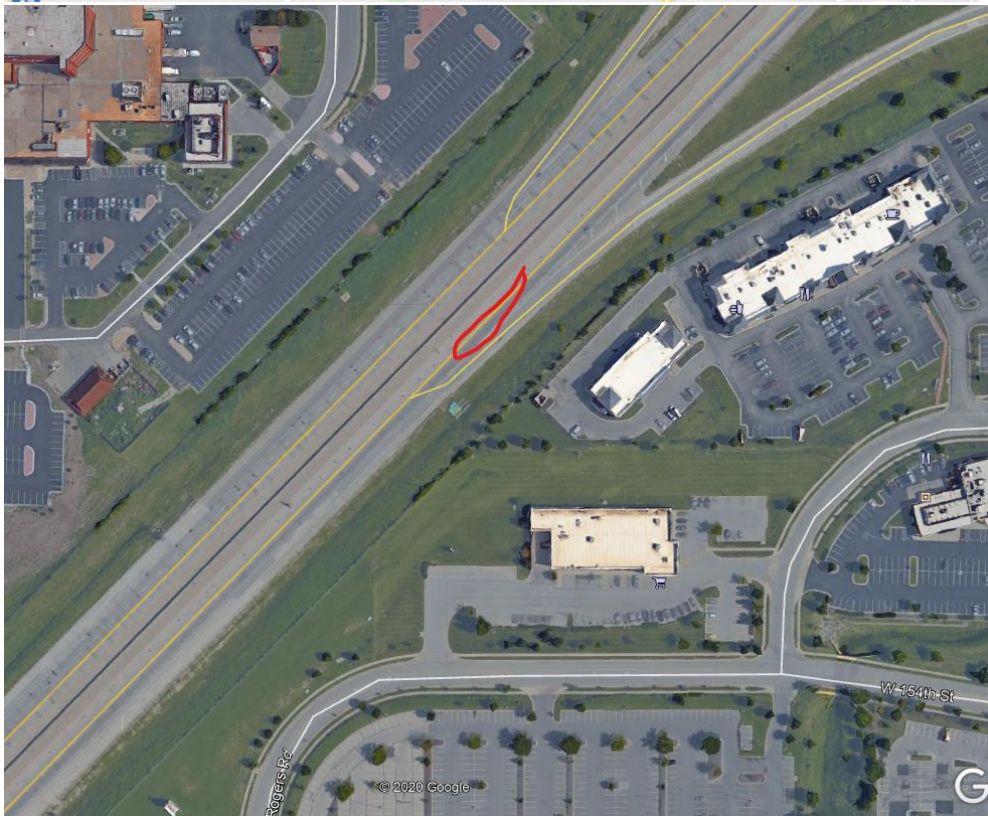
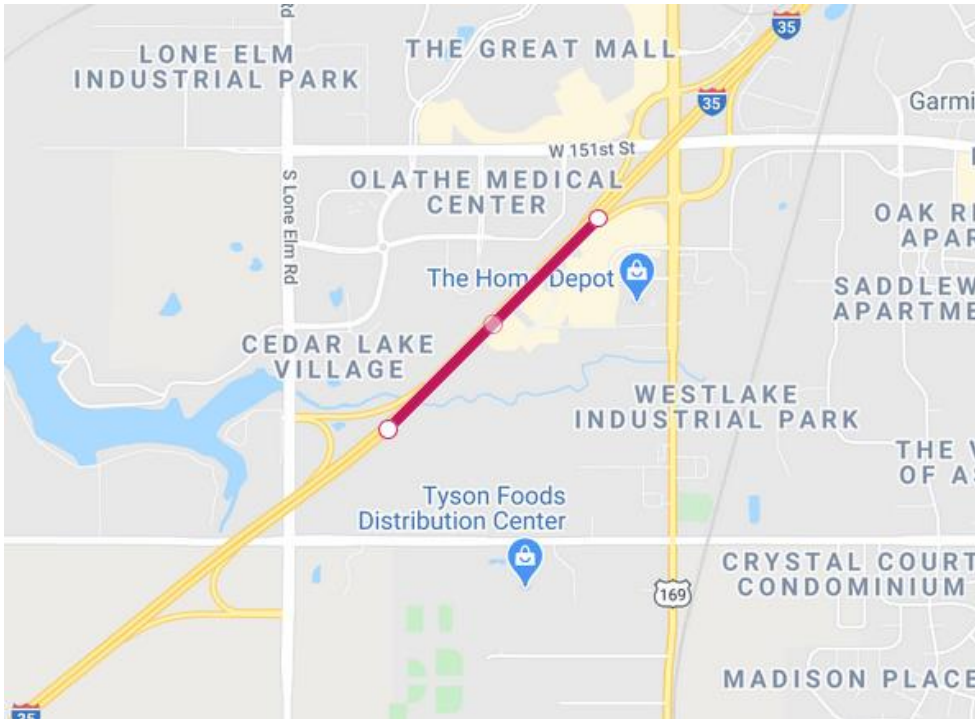
**Pavement project on northbound I-35, between Lone Elm Road
and U.S. 169, begins March 16**

The Kansas Department of Transportation will remove and replace a section of pavement on northbound I-35 between Lone Elm Road and U.S. 169 in Johnson County, starting Monday, March 16, weather permitting.

The right two lanes of northbound I-35 will be closed at 8 a.m. Monday, will remain closed Monday night and will reopen Tuesday afternoon, March 17. The exit to U.S. 169 will remain open. Work will occur during daylight hours.

Traffic will be controlled with lane closures, traffic cones, arrow boards and digital message boards.

KDOT urges all motorists to be alert and obey the warning signs when approaching and driving through a highway work zone. To stay aware of all road construction projects across Kansas go to www.kandrive.org or call 5-1-1. Drive safely and always wear your seat belt.



###

This information can be made available in alternative accessible formats upon request.

For information about obtaining an alternative format, contact the KDOT Office of Public Affairs,
700 SW Harrison St., 2nd Fl West, Topeka, KS 66603-3754 or phone 785-296-3585
(Voice)/Hearing Impaired – 711.

Click below to connect to KDOT's Social Networks:

