

Kansas City Metro Office  
1290 S. Enterprise  
Olathe, KS 66061-5355



phone: 913-942-3100  
fax: 913-782-5914  
www.ksdot.org

Julie Lorenz, Secretary

Laura Kelly, Governor

## **IMMEDIATE RELEASE**

**June 22, 2020**

### **For more information:**

Kelly Kultala

(785) 207-0715

[Kelly.Kultala@ks.gov](mailto:Kelly.Kultala@ks.gov)

## **Long term ramp and lane closures at I-70/Turner Diagonal Freeway**

According to the Kansas Department of Transportation, long term ramp and lane closures as part of the Turner Diagonal Interchange reconfiguration, to begin July 10, weather permitting. This project includes the construction of a diverging diamond interchange at I-70 and the Turner Diagonal Freeway in Wyandotte County.

Detours routes will be marked and are in the maps below. Traffic on this project will be diverted using lane closures, signage and traffic cones.

The west ramp closures include:

- Eastbound I-70 ramp to southbound Turner Diagonal Freeway,
- Eastbound I-70 ramp to northbound Turner Diagonal Freeway,
- Northbound Turner Diagonal ramp to westbound I-70,
- Southbound Turner Diagonal ramp to westbound I-70, from Friday, July 10 to Tuesday, September 8.

The east ramp and lane closures include:

- Southbound Turner Diagonal Freeway ramp to eastbound I-70,
- Northbound Turner Diagonal Freeway ramp to eastbound I-70,
- Northbound and southbound Turner Diagonal Freeway from State Avenue to Riverview Avenue, Friday, July 31, to Tuesday, September 8.

For bridge removal and pipe placement, lane closures include:

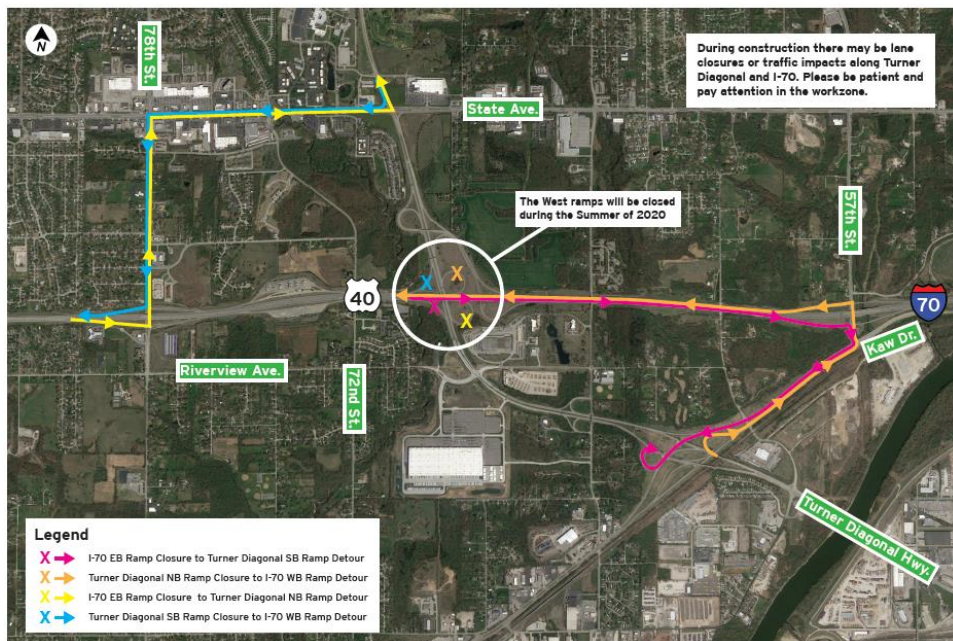
- All eastbound and westbound lanes on I-70 at Turner Diagonal Freeway, from 10 p.m. to 6 a.m., Friday, July 31 to Monday, August 2. Traffic will be diverted to State Avenue as the detour route.

More information about the project can be found on the project website, [TheTurnerDiagonal.com](http://TheTurnerDiagonal.com).

KDOT urges all motorists to be alert and obey the warning signs when approaching and driving through a highway work zone. To stay aware of all road construction projects across Kansas go to [www.kandrive.org](http://www.kandrive.org) or call 5-1-1. Drive safely and always wear your seat belt.

## WEST RAMPS DETOUR MAP

The Turner Diagonal Interchange and Turner Diagonal Highway will be fully closed for approximately one and a half months. The West Ramps will be closed for approximately two months. There will be additional short term closures throughout the project. The detour routes will be marked.



TURNER DIAGONAL

# EAST RAMPS DETOUR MAP

The Turner Diagonal Interchange and Turner Diagonal Highway will be fully closed for approximately one and a half months. The East Ramps will also be closed for approximately one and a half months. The detour routes will be marked.



As of April 2020

TURNER DIAGONAL

###

This information can be made available in alternative accessible formats upon request. For information about obtaining an alternative format, contact the KDOT Office of Public Affairs, 700 SW Harrison St., 2<sup>nd</sup> Fl West, Topeka, KS 66603-3754 or phone 785-296-3585 (Voice)/Hearing Impaired – 711.

Click below to connect to KDOT's Social Networks:

