

Kansas City Metro Office
1290 S. Enterprise
Olathe, KS 66061-5355



phone: 913-942-3100
fax: 913-782-5914
www.ksdot.org

Julie Lorenz, Secretary

Laura Kelly, Governor

IMMEDIATE RELEASE
April 30, 2020

For more information:

Kelly Kultala

(785) 207-0715

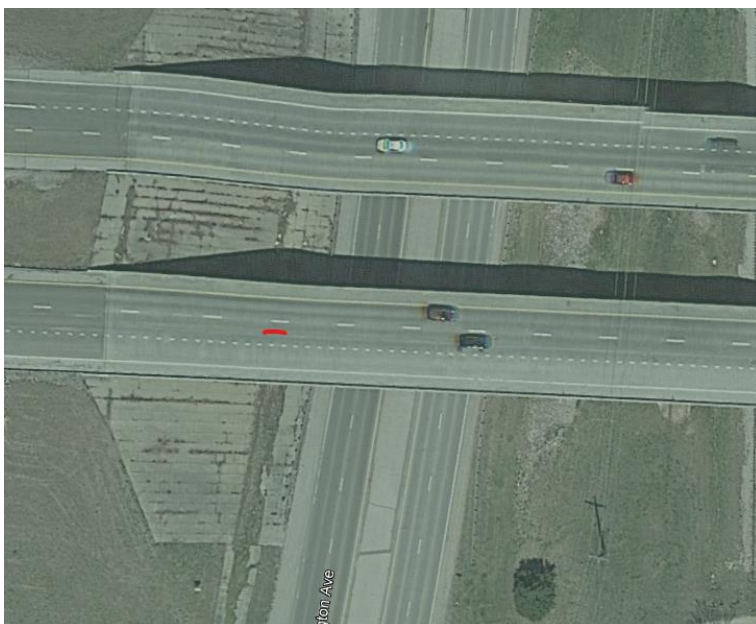
Kelly.Kultala@ks.gov

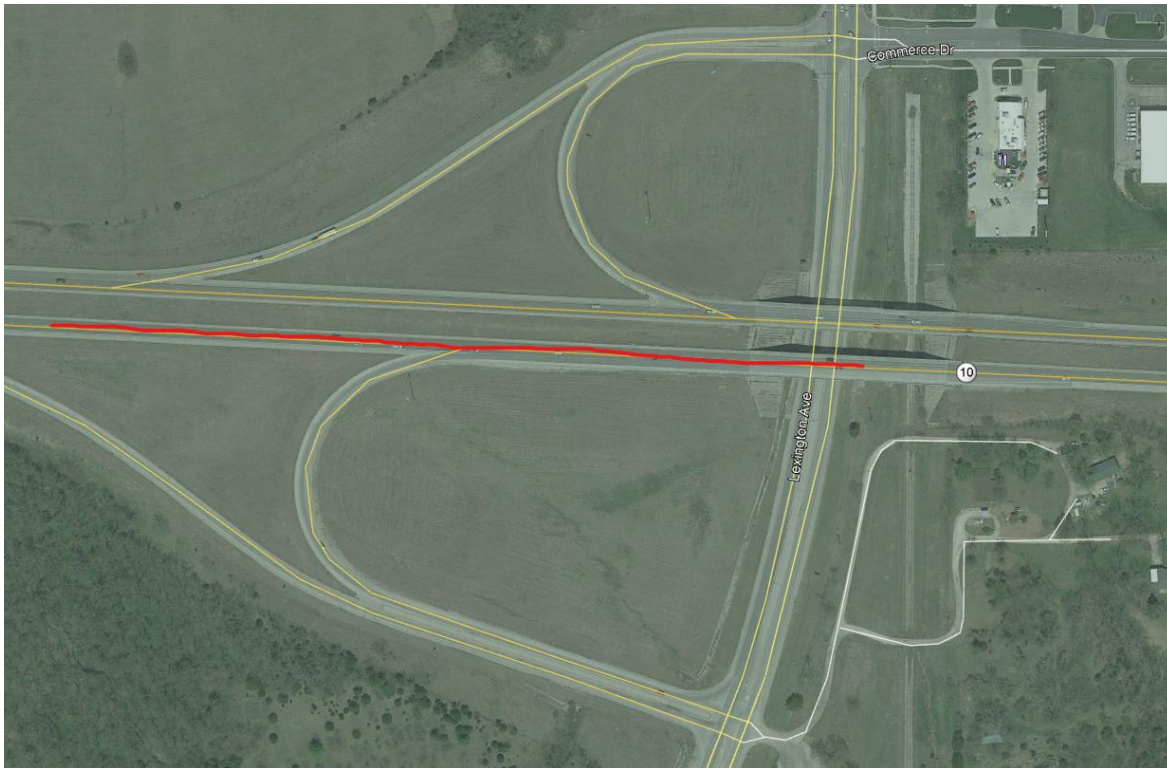
Lane closed on K-10 at Lexington Avenue in Johnson County

The right lane of eastbound K-10, over the Lexington Avenue bridge, is closed for bridge maintenance. Work on the bridge is expected next week, weather permitting.

Traffic will be controlled by traffic cones and digital message boards.

KDOT urges all motorists to be alert and obey the warning signs when approaching and driving through a highway work zone. To stay aware of all road construction projects across Kansas go to www.kandrive.org or call 5-1-1. Drive safely and always wear your seat belt.





###

This information can be made available in alternative accessible formats upon request.
For information about obtaining an alternative format, contact the KDOT Office of Public Affairs,
700 SW Harrison St., 2nd Fl West, Topeka, KS 66603-3754 or phone 785-296-3585
(Voice)/Hearing Impaired – 711.

Click below to connect to KDOT's Social Networks:

