

## An Update on KC Metro Highway Projects

**Week of Nov. 2, 2020**

**Updated Nov. 6**

Contact: Kelly Kultala, 785-207-0715 cell; [kelly.kultala@ks.gov](mailto:kelly.kultala@ks.gov)

KDOT: [www.ksdot.org](http://www.ksdot.org)

KanDrive: [www.KanDrive.org](http://www.KanDrive.org)

NE Kansas KDOT: [Kansas City Metro releases](#)

Facebook: [@NEKansasKDOT](#)

[Kansas City Metro Projects List](#)

Twitter: [@KansasCityKDOT](#)

### JOHNSON COUNTY

KDOT maintenance:

KDOT construction projects affecting traffic:

#### **1. Intersection and safety improvements, eastbound and westbound U.S. 56 at 199th St.**

- Work will occur during daylight hours and is expected to be complete late December.
- Access to northbound Sunflower Rd. and southbound 199th St. from US-56 will be closed for the duration of the project.
- Intersection improvements will add right and left turn lanes for eastbound U.S. 56 and a left turn lane for westbound U.S. 56. Safety improvements include creating 10

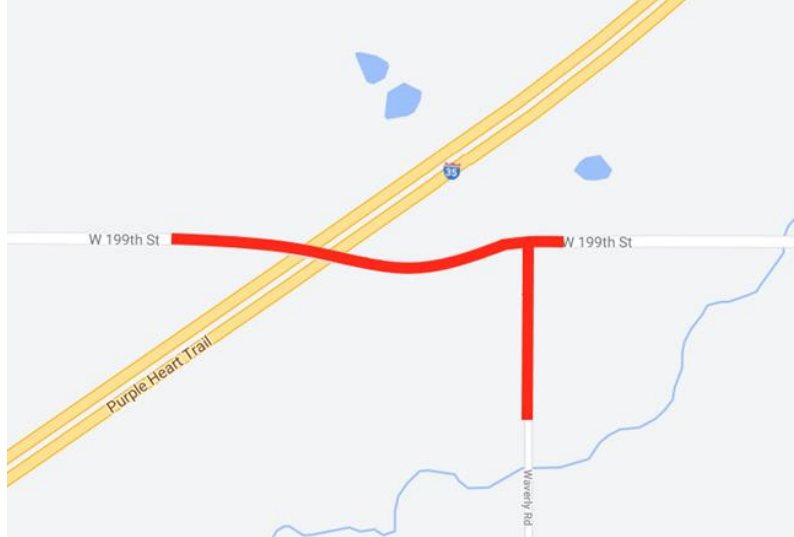
#### **2. Widening I-35 from three lanes to four lanes at 75th Street**

A lane widening project on I-35 from south of 67th Street to south of 75th Street is ongoing, weather permitting. Majority of the work will occur during daytime work hours, however, night work is expected during particular phases of construction. The project is expected to be completed in late December.

- Northbound on ramp from 75th Street to I-35 is closed until **late December** for pavement reconstruction. Northbound East Frontage Road is open, the southbound section between 75th Street and 74th Street will remain closed until **late December**.
- Southbound I-35 off ramp to 75th St. is open. **The southbound on ramp from 75th St. has reopened.**
- The southbound East Frontage Road detour route is to use 67th Street, east to Antioch Road, south to 75th Street.

**3. 199th St and Waverly Road - NEW (ONGOING)**

The 199th Street overpass over I-35 between Homestead Lane and Gardner Road is closed for the replacement of the overpass bridge. Waverly Road access to 199th Street from 207th Street is also closed. This project is expected to be completed by October 2021.



**WYANDOTTE COUNTY**

KDOT maintenance:

- For pavement patching, the following ramp and lane closures, from 7 p.m. to 8 a.m., Fri. Nov. 6 to Wed. Nov. 11: **NEW**
  - Lane closures:
    - Eastbound and westbound I-670 between Mill St. bridge and west edge of I-70 bridge.
    - Westbound I-70 from Armstrong/James St. bridge to 7<sup>th</sup> St. bridge.
  - Ramp closures:
    - Westbound Central Ave. to westbound I-70,
    - Westbound 5<sup>th</sup> St. to westbound I-70 east,
    - James St. to westbound I-70,
    - 5<sup>th</sup> St. to westbound I-70,
    - Westbound I-70 to Central Ave.,
    - Pacific to westbound I-70,
    - Eastbound Central Ave. to westbound I-70,
    - Westbound I-70 to Pacific,
    - 7<sup>th</sup> St. to westbound I-70,
    - Westbound I-70 to southbound 7<sup>th</sup> St.

KDOT construction projects affecting traffic:

**1. I-635 pavement patching and overlay project (ONGOING)**

June 15, 2020 through November 20, 2020  
Daytime Operations –

Northbound and southbound I-635 traffic may be restricted to two lanes of traffic between State Ave. and K-5 during the hours of 6 a.m. to 6 p.m. daily. Double lane closures, restricting to one lane of traffic, between 8:30 a.m. and 3:30 p.m. **NEW (ONGOING)**

- Double lane closure allowed except from 6 a.m. to 8:30 a.m. and 3:30 p.m. to 6 p.m.
- Ramp Closures any time after 8:30 a.m., as needed.
- No restrictions on Saturdays or Sundays.

#### Nighttime Operations –

Northbound and southbound I-635 traffic will be restricted to one lane using a nightly lane drop between Foster St. and the BNSF railroad bridge.

- The time of the closures will be from 7 p.m. to 5 a.m. Monday to Friday and 7 p.m. to 8 a.m., Saturday to Sunday.
- Ramps will be intermittently closed throughout the duration of the project.

## 2. Resurfacing of northbound and southbound I-435 in Wyandotte County

- **Intermittent single and double lane closures, northbound and southbound I-435 from Leavenworth Road to the Kansas River.**
  - Work hours will be 7 a.m. to 4:30 p.m., Monday thru Friday and 6 a.m. to 6 p.m., Sat. and Sun.  
--Up to five miles, inside and center lanes will be closed as needed.
  - **For pavement markings, lane and ramp closures, northbound and southbound I-435, from the Kansas River to north of Leavenworth Road, 6 a.m. to 6 p.m., Sat. Nov. 7 & Sun. Nov. 8. NEW**

## 3. Reconfiguration of the Turner Diagonal interchange in Wyandotte County

A new diverging diamond interchange has been built, scheduled to reopen November.

- Eastbound I-70 truck staging area is open to trucks, while the westbound I-70 truck staging area is closed.
- Northbound College Parkway/Turner Diagonal Freeway is **open**.
- **For pavement marking, Sat. Nov. 7 – \*\* TRAFFIC ALERT \*\***
  - **Right lane closed, westbound I-70, from 65<sup>th</sup> St. to 78<sup>th</sup> St., 7 a.m. to 7 p.m. NEW**
  - **Ramp closed, westbound I-70 to northbound and southbound Turner Diagonal Freeway, 7 a.m. to 1 p.m. NEW**
  - **Ramps closed, northbound and southbound Turner Diagonal Freeway to westbound I-70, 7 a.m. to 1 p.m. NEW**
  - **Ramp closed, westbound I-70 to 78<sup>th</sup> St., from 7 a.m. to 1 p.m. NEW**

## 4. Lewis and Clark Viaduct bridge replacement

Westbound I-70 will be closed past Broadway Blvd (in Missouri NW corner of the downtown loop) to 3<sup>rd</sup> St in Kansas City, Kansas for bridge replacement.

- Ramps closed –

- Ramps from 5<sup>th</sup> St, Beardsley Rd, Independence Ave at Delaware Ave. and I-35 to Westbound I-70 (in Missouri) will be closed.
- Ramps from Westbound I-70 to Minnesota Ave, Washington Blvd, and Fairfax Trafficway will be closed.

#### 5. 43rd St. bridge repair

Northbound and southbound I-635 traffic will be restricted to 2 lanes at 43rd St for bridge repairs.

- **Ramps are open**, northbound and southbound I-635 lanes are open. Intermittent daily lane closures from now through Nov. 20 to finish work. **NEW**

#### 6. Railyard bridge repair

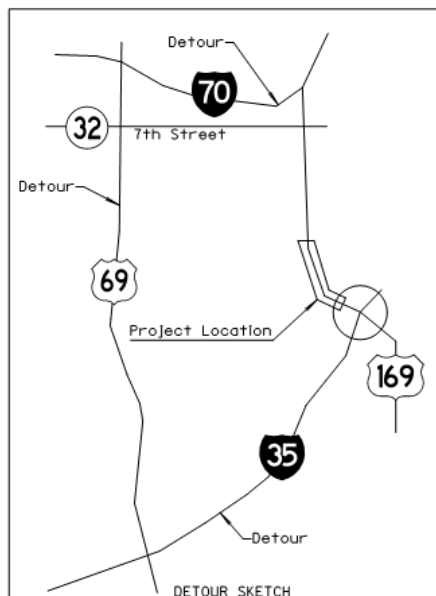
North Bound and South Bound I-635 traffic will be restricted to two lanes at the railyard bridges just south of K-32 (Kansas Ave.).

- Concrete Barrier will be used across the north abutments of the bridges for the duration of the project.
- Completion date is expected to be Nov. 20.
- Northbound off-ramp to K-32 (Kansas Ave.) is **open**. The southbound on-ramp from K-32 (Kansas Ave.) is **open**.

#### 7. Bridge maintenance project on U.S. 169/Seventh Street: **Northbound lanes on bridge are now closed, effective noon, Oct. 29 – NEW**

Work will include truss and expansion joint repair on the Kansas River bridge, primarily on the northbound side.

- Work will occur during daytime hours, Monday to Friday, and completion is expected in mid-June 2021. Weekend and night work may take place to close the bridge and for placement of traffic control equipment and detour signs.
- **Northbound lanes of U.S. 169/Seventh Street over the bridge will be closed to mid-December. During the closures traffic will be detoured to U.S. 69/18th Street. (See map below)** The project will shut down during the winter and the bridge will reopen.
- In early spring 2021, when work resumes the northbound lanes will be closed again. Southbound lanes are tentatively scheduled to close in April 2021 for approximately 60 days. The previous detour route will be utilized.



## JEFFERSON COUNTY

KDOT maintenance:

KDOT construction project affecting traffic:

## LEAVENWORTH COUNTY

KDOT maintenance:

KDOT construction project affecting traffic:

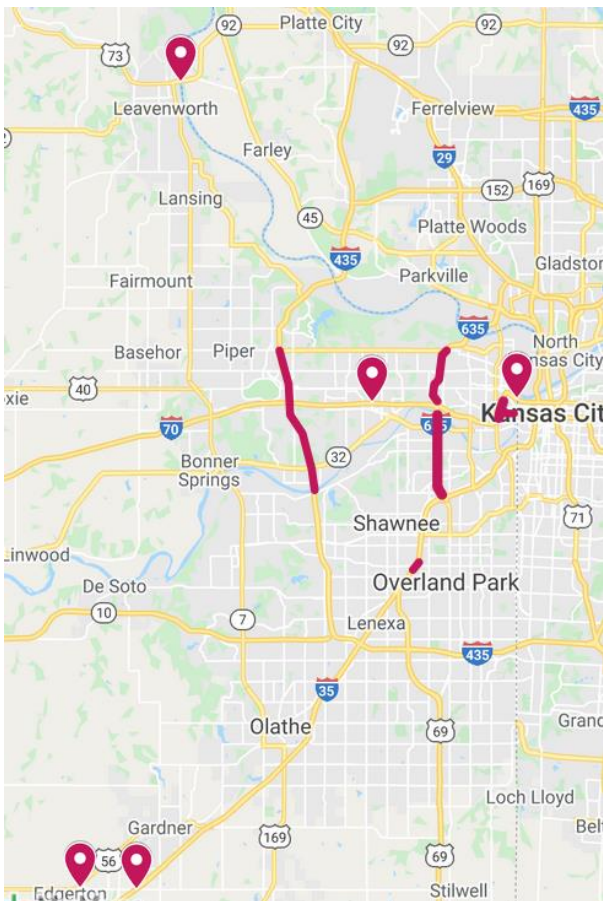
### 1. **Bridge maintenance project on the Centennial Bridge in Leavenworth – NEW (ONGOING)**

- Work includes cleaning and painting of the interior tie girders and will occur from 8 a.m. to 3 p.m., Monday to Friday, completion is expected in mid to late December.
- Traffic will be controlled using single lane closures and a flagging operation, signage, and traffic cones. All lanes should be open outside of work hours.

✓ **NEW – For painting of the interior tie girders, one lane closed across Centennial Bridge, from 8 a.m. to 3 p.m., Sat. Nov. 7 and Mon. Nov. 9 to Fri. Nov. 11.**

For additional road condition details, check KDOT's updated traveler information website, [www.Kandrive.org](http://www.Kandrive.org). KDOT urges all motorists to be alert and obey the warning signs when approaching and driving through a work zone. Drive safely and always wear your seat belt.

Unsubscribe from this email list by emailing [kelly.kultala@ks.gov](mailto:kelly.kultala@ks.gov) (put Unsubscribe in the Subject line).



###

This information can be made available in alternative accessible formats upon request.  
For information about obtaining an alternative format, contact the KDOT Office of Public Affairs,  
700 SW Harrison St., 2<sup>nd</sup> Fl West, Topeka, KS 66603-3754 or phone 785-296-3585  
(Voice)/Hearing Impaired – 711.

Click below to connect to KDOT's Social Networks:

