

Eisenhower State Office Building
700 SW Harrison
Topeka, KS 66603



phone: 785-296-3585
fax: 785-296-0287
www.ksdot.org

Richard Carlson, Secretary

Sam Brownback, Governor

IMMEDIATE RELEASE

May 17, 2017

For more information:

Kim Stich

785.296.3585

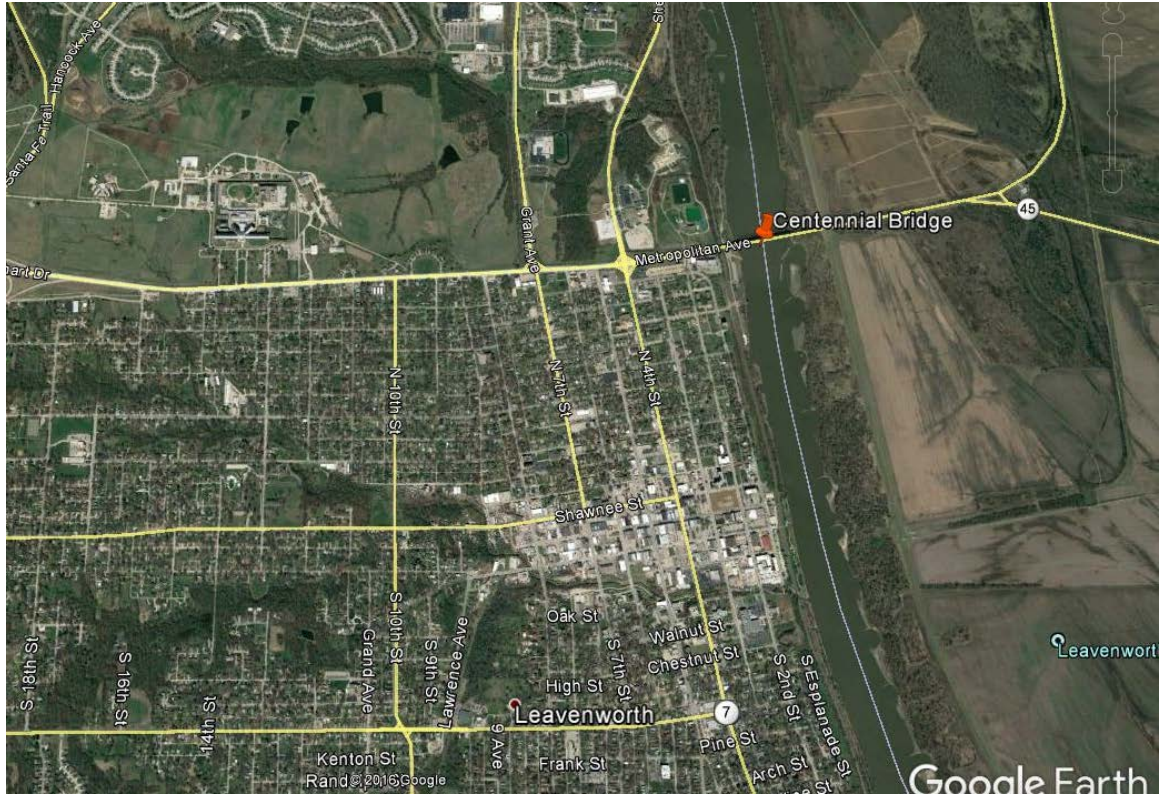
KDOT.Media@ks.gov

K-92 bridge in Leavenworth to be closed May 22

Both eastbound and westbound K-92, also known as Metropolitan Avenue, on the Centennial Bridge over the Missouri River will be closed to traffic from 9 a.m. to 2 p.m. on Monday, May 22, weather permitting.

According to the Kansas Department of Transportation, this closure in Leavenworth is necessary to allow for bridge inspection work to take place. Message boards will be placed in advance of May 22 closure to advise motorists of the upcoming project.

Motorists need to use alternate routes and there is no marked detour. A map showing the bridge's location is below.



###

This information can be made available in alternative accessible formats upon request. For information about obtaining an alternative format, contact the Office of Public Affairs, 700 SW Harrison St., 2nd Fl West, Topeka, KS 66603-3754 or phone 785-296-3585 (Voice)/Hearing Impaired – 711.

Click below to connect to KDOT's Social Networks:



