

SPECIAL I-35 TRAFFIC ALERT

FOR IMMEDIATE RELEASE

June 27, 2016

News Contact: Kimberly Qualls, (785) 640-9340 or kqualls@ksdot.org



I-35 KC METRO AREA CONSTRUCTION PROJECTS UPDATE

There are numerous major construction projects underway impacting I-35 travelers in the Kansas City Metro Area this construction season. After significant delays were encountered by traffic this past weekend on I-35, especially north of 87th Street to 75th Street in the Johnson County area, we wanted to provide drivers with a snapshot look at four major construction projects (from north to south along I-35 – see list below) currently underway, including potential traffic impacts, to assist drivers in planning their daily, overnight or weekend commutes.

IMPORTANT NOTE: Regarding this past weekend's pavement repair project work on the both northbound and southbound I-35 from approximately 75th Street to Southwest Boulevard (Johnson County), KDOT construction staff have revisited this specific project's traffic impacts and will be making changes for when work is scheduled to take place on northbound I-35 area through and adjacent to the 75th Street interchange only by moving this work from weekends to weekday overnights, limiting the maximum number of lane and ramp closures,

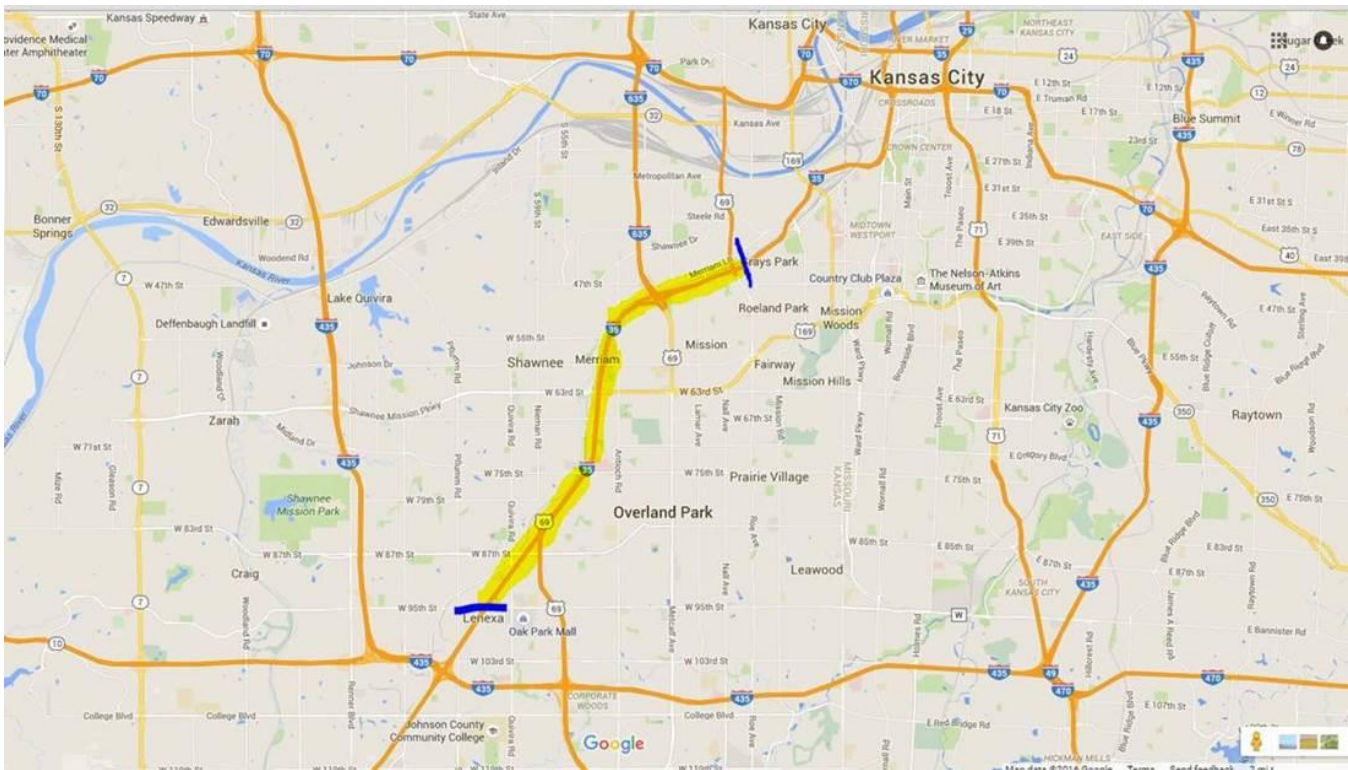
and adding extra signage via variable message boards to help communicate potential traffic delays when work take places on this section of I-35.

Updated daily traffic information for these construction projects and for the entire Kansas City Metro Area can be viewed online, anytime 24/7, at: www.ksdot.org/kcmetro/laneclose.asp



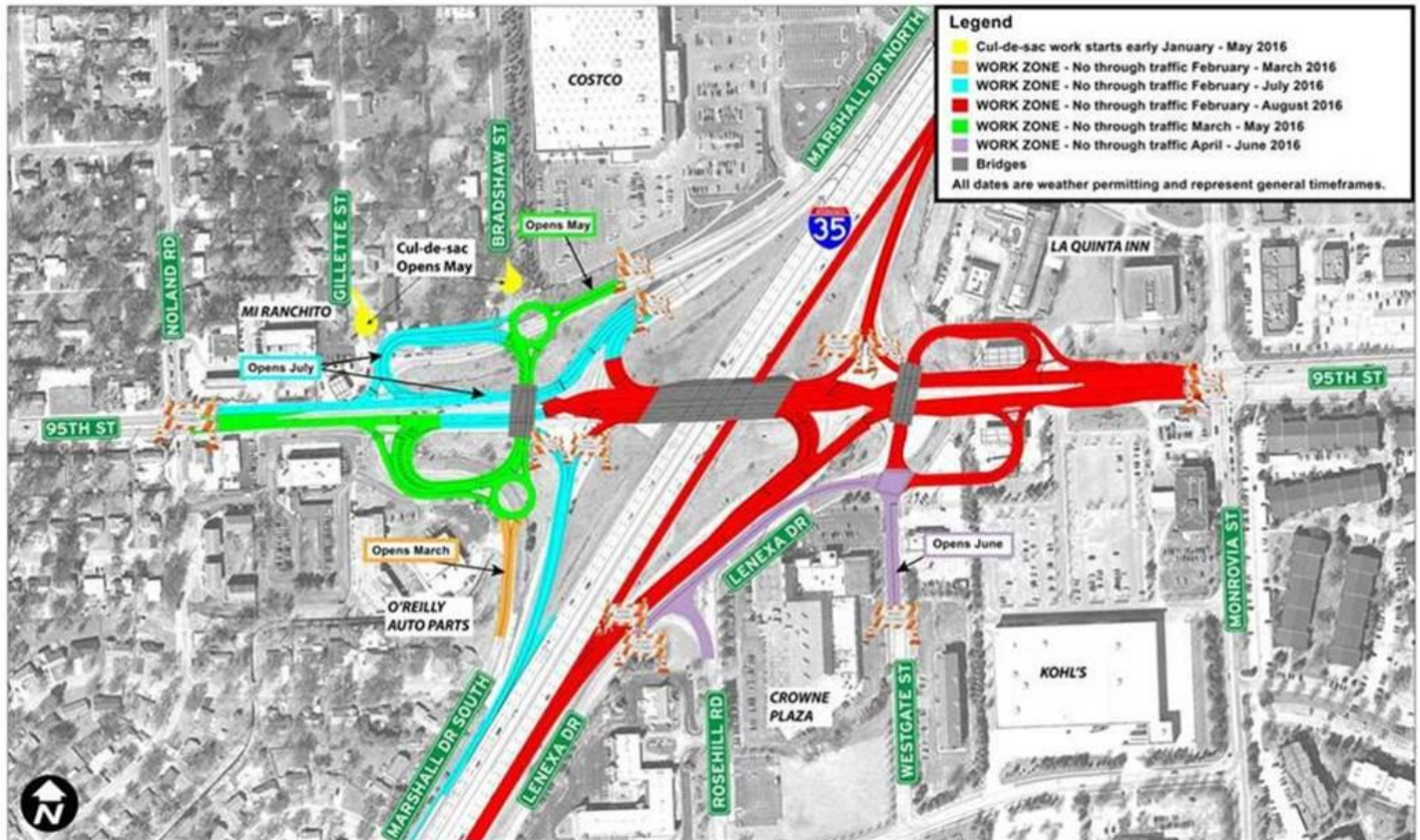
I-35 from Southwest Boulevard to 95th Street Resurfacing Project (Johnson County)

WEEKDAY & WEEKEND OVERNIGHT LANE CLOSURES: Northbound and southbound I-35 from 95th Street to Southwest Boulevard will have varying lane and ramp closures for pavement resurfacing work beginning on Wednesday, March 23, weather permitting). Crews will complete partial and full depth patching to the existing concrete pavement, followed by a 4-inch asphalt overlay on various sections, and all new permanent pavement markings. **Work will take place overnight beginning at 8 p.m. and reopening to all traffic at 5 a.m. the following morning, daily, Wednesday and Thursday; and on weekends from 8 p.m. Friday through 8 a.m. Saturday; and from 8 p.m. Saturday through late Sunday afternoon.** Project work is scheduled to be completed in late October 2016.



I-35 & 95th Street Diverging Diamond Interchange Project > #jocogateway project

24/7 LONG-TERM INTERCHANGE CLOSURE: All ramps to/from 95th Street to/from I-35 and 95th Street over I-35 CLOSED to all through traffic beginning at 10 p.m. on Sunday, February 21 through Late August 2016, as project work will take place to reconstruct the existing diamond interchange into a new diverging diamond interchange. Marked detour route maps can be found here: <http://jocogateway.com/95th-street-and-i-35-diverging-diamond-interchange/> and below. Project work is scheduled to be completed in late August 2016.



I-35 & I-435 Interchange Ramp Closures > #jocogateway project

24/7 LONG-TERM LOOP RAMP CLOSURE: Southbound I-35 to eastbound I-435 loop ramp CLOSED for pavement reconstruction and tie-in work, 24/7 round the clock, beginning at 10 p.m. on Monday, April 11 through late October 2016, weather permitting. SB I-35 to EB I-435 ramp traffic to detour via southbound I-35 to southbound U.S. 69 to eastbound I-435 or via eastbound 119th Street northbound I-35 to eastbound I-435. *We recommend that drivers use the detour route via southbound U.S. 69, and NOT the eastbound 119th Street route.* The eastbound 119th Street detour route is provided as a backup marked detour route for those drivers who miss the southbound U.S. 69 detour route. Project work is scheduled to be completed in late October 2016.



60-DAY LONG-TERM RAMP CLOSURE: Westbound I-435 to northbound I-35 entrance ramp CLOSED for ramp reconstruction work, 24/7 round the clock, beginning at 6 a.m. on Tuesday, May 31 and reopening sometime on Friday, July 29. Westbound I-435 marked detour via northbound U.S. 69 to access northbound I-35. Project work is scheduled to be completed on Friday, July 29.

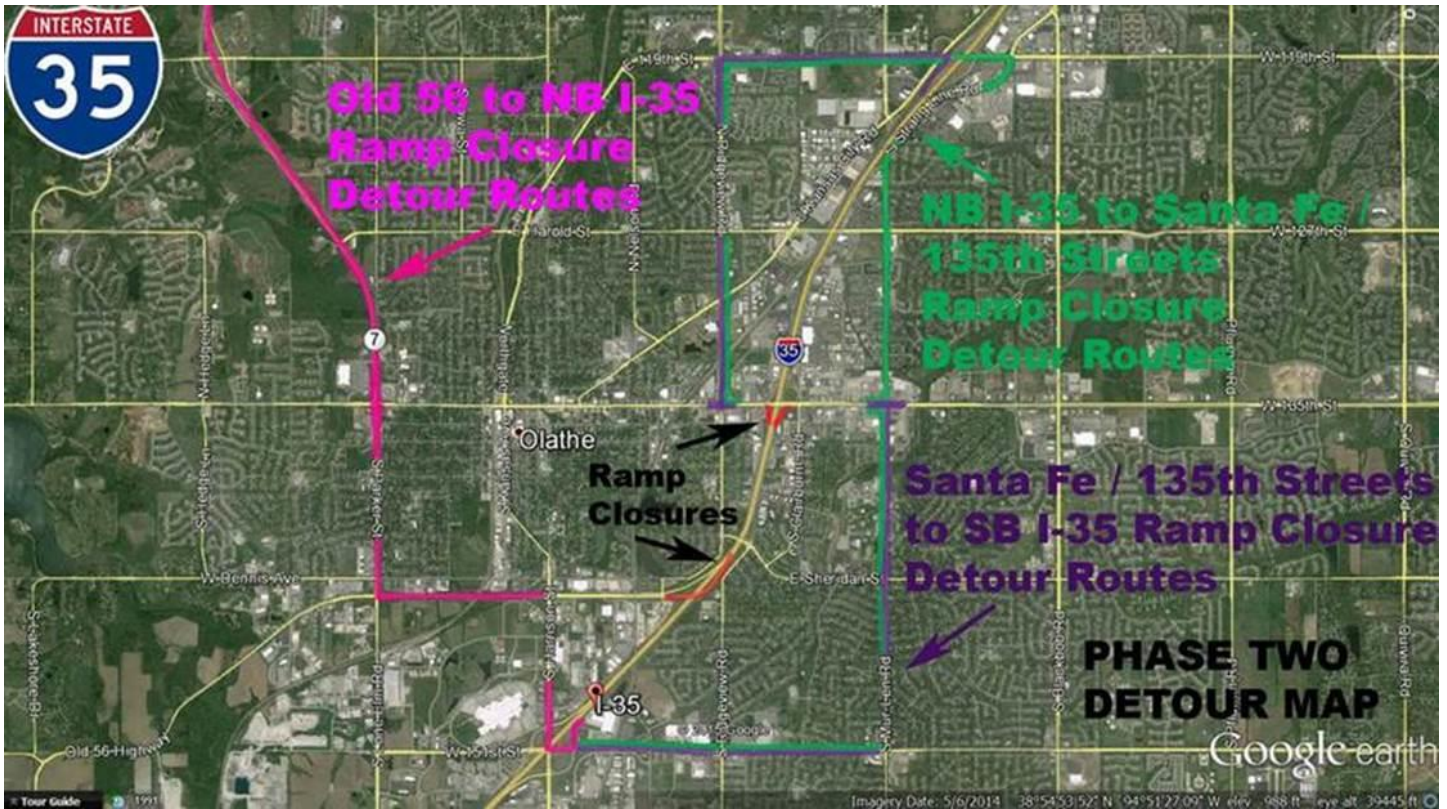


I-35 from 151st Street to Santa Fe Street/135th Street Pavement Reconstruction Project (Johnson County)

24/7 TRAFFIC SHIFT: All northbound I-35 traffic will be shifted onto the southbound I-35 lanes by 3 p.m. on Tuesday, March 29, weather permitting, through late September 2016. Both northbound and southbound I-35 will be reduced to two lanes each direction in the final traffic configuration throughout the project duration. Project work is scheduled to be completed in late September 2016.

24/7 LONG-TERM DUAL RAMP CLOSURES: Old U.S. 56 to northbound I-35 entrance ramp will be FULLY CLOSED, 24/7 round the clock, beginning at 4 a.m. on Tuesday, March 29 through late September 2016. Northbound I-35 to Santa Fe Street/135th Street exit ramp will be FULLY CLOSED, 24/7 round the clock, sometime during the day on Tuesday, March 29, through late September 2016. A marked detour will be provided. Old U.S. 56 traffic will detour either northbound K-7 to eastbound K-10 or southbound on K-7 to 151st Street to access northbound I-35. Northbound I-35 traffic will detour via eastbound 119th Street to southbound Strang Line Road or via eastbound 151st Street to northbound Mur-Len Road to access Santa Fe Street/135th Street. Project work is scheduled to be completed in late September 2016.

24/7 LONG-TERM RAMP CLOSURE: Santa Fe Street/135th Street to southbound I-35 entrance ramp will be FULLY CLOSED, 24/7 round the clock, beginning at 2 a.m. on Tuesday, March 22, weather permitting, through late September 2016. A marked detour will be provided. Santa Fe Street/135th Street traffic will detour via southbound Mur-Len Road to westbound 151st Street or via northbound Ridgeview Road to eastbound 119th Street to access southbound I-35. Project work is scheduled to be completed in late September 2016.



I-35 Pavement Marking Project from Johnson/Miami County line to Ottawa in Franklin County

24/7 LANE CLOSURES: A KDOT project to place multi-component epoxy pavement markings on northbound and southbound I-35 from the Eisenhower Road interchange at Ottawa northeast to the Miami-Johnson County line. **SPECIAL NOTE: Work has been completed on both the northbound and southbound lanes in Miami County.** Work continues on the southbound lanes in Franklin County near Ottawa. The project involves five-mile lane closures with a reduced speed limit of 65 mph at the work zone. The lane closures are in effect weekdays and occasionally on Saturdays. Intermittent I-35 ramp closures of one hour or less can be expected along the project; use alternate ramps. KDOT expects pavement marking on the southbound Franklin County lanes to be completed by the end of June. The project will then be inactive until the week of July 11. On July 11, project work is expected to resume on the northbound lanes in Franklin County, starting at Eisenhower Road and continuing north. Project work is scheduled to be completed in early August 2016.

###

This information is available in alternative accessible formats. To obtain an alternative format, contact KDOT Office of Public Affairs, Eisenhower Building, 700 SW Harrison, 2nd Floor West, Topeka, Kan., 66603-3754, or (785) 296-3585 (Voice)/Hearing Impaired - 711.

Click below to connect to KDOT's Social Networks:

