

# TRAFFIC ALERT

## FOR IMMEDIATE RELEASE

July 18, 2014

News Contact: Kimberly Qualls, (785) 640-9340 or [kqualls@ksdot.org](mailto:kqualls@ksdot.org)

### **K-7/U.S. 169/151st Street & I-35 Interchange**

**EXPECT DELAYS! 24/7 WEEKEND CLOSURES:** Lane and ramp closures at the K-7 / U.S. 169 / 151st Street and I-35 interchange will occur for pavement reconstruction work this weekend beginning at **9:00 p.m. TODAY, Friday, July 18 and reopening to all traffic at 5:00 a.m. on Monday, July 20 (THIS WEEKEND)**, weather permitting. See map below.

Marked detours will be provided. **Southbound traffic K-7 / U.S. 169** traffic will detour onto 151st Street and down Lone Elm Road and then back on 159th Street. **Northbound K-7 / U.S. 169 traffic** will still be able to use the ramp onto 151st Street and follow the detour back down the other 151st Street ramp.

The northbound I-35 to 151st Street (Exit 215) ramp will be closed. **Northbound I-35 traffic** will detour via the Lone Elm Road Interchange (Exit 214), then north on Lone Elm Road and east on 159th Street back to K-7 / U.S. 169.

Traffic will be directed through the project work zone via signage and cones. Drivers should expect minor delays during their weekend commutes.

Updated daily traffic information for this project and for the entire Kansas City Metro Area can be viewed online any time at: [www.ksdot.org/kcmetro/laneclose.asp](http://www.ksdot.org/kcmetro/laneclose.asp).

The Kansas Department of Transportation and the Kansas Turnpike Authority urges all motorists to be alert, obey the warning signs, and "Give 'Em a Brake!" when approaching and driving through the project work zone.

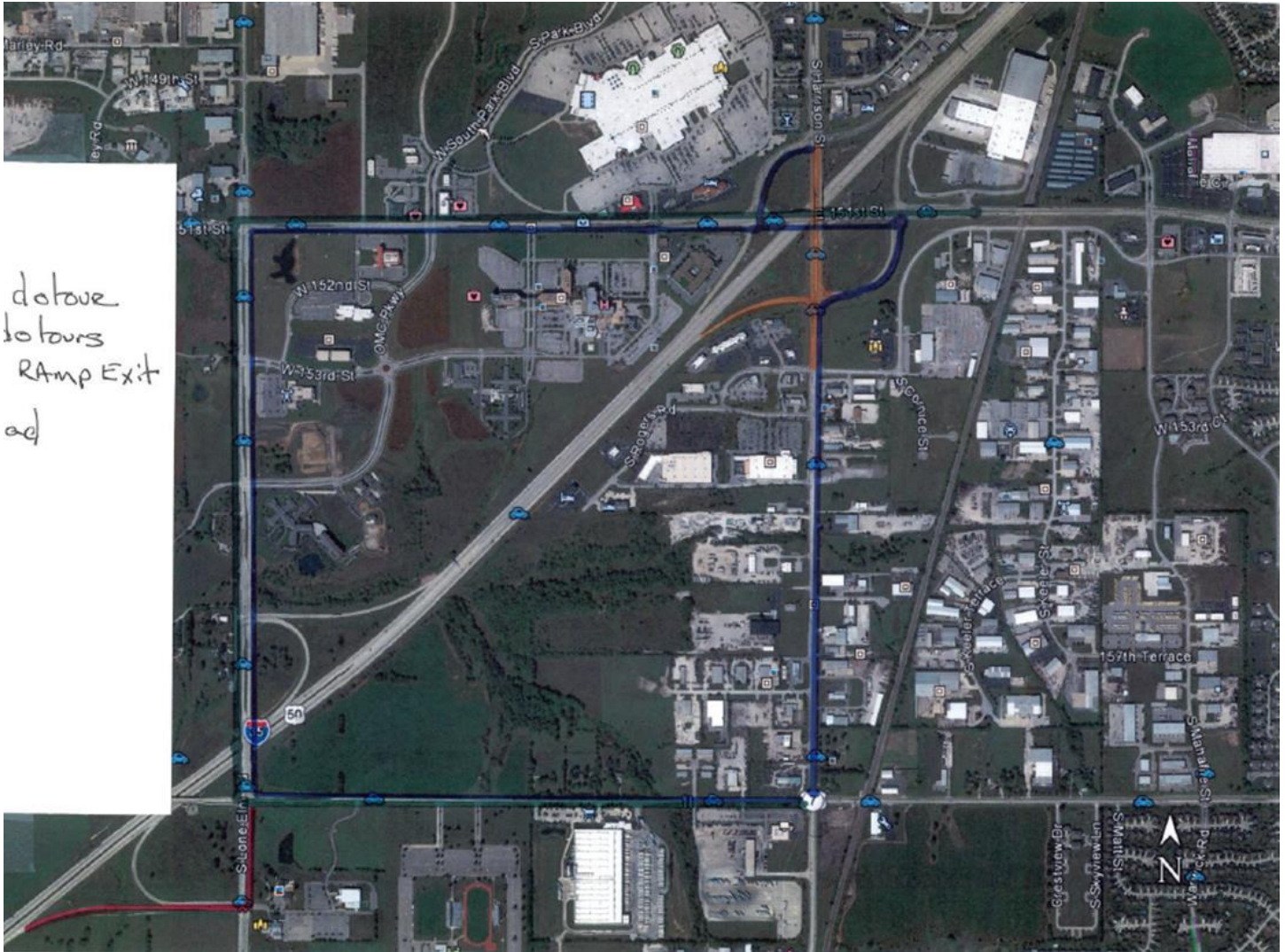
**The overall project is scheduled to be completed in late September 2014, weather permitting. (KDOT Project #7-46 KA-3408-01)**

## Map Legend:

**Orange** >> Interchange Closures

**Blue** >> Marked Detour Routes

**Red** >> Northbound I-35 Detour Exit Ramp



###

This information is available in alternative accessible formats. To obtain an alternative format, contact KDOT Transportation Information, Eisenhower Building, 700 SW Harrison, 2nd Floor West, Topeka, Kan., 66603-3754, or (785) 296-3585 (Voice)/Hearing Impaired - 711.

Click below to connect to KDOT's Social Networks:

