

# TRAFFIC ALERT

## FOR IMMEDIATE RELEASE

June 16, 2014

News Contact: Kimberly Qualls, (785) 640-9340 or [kqualls@ksdot.org](mailto:kqualls@ksdot.org)

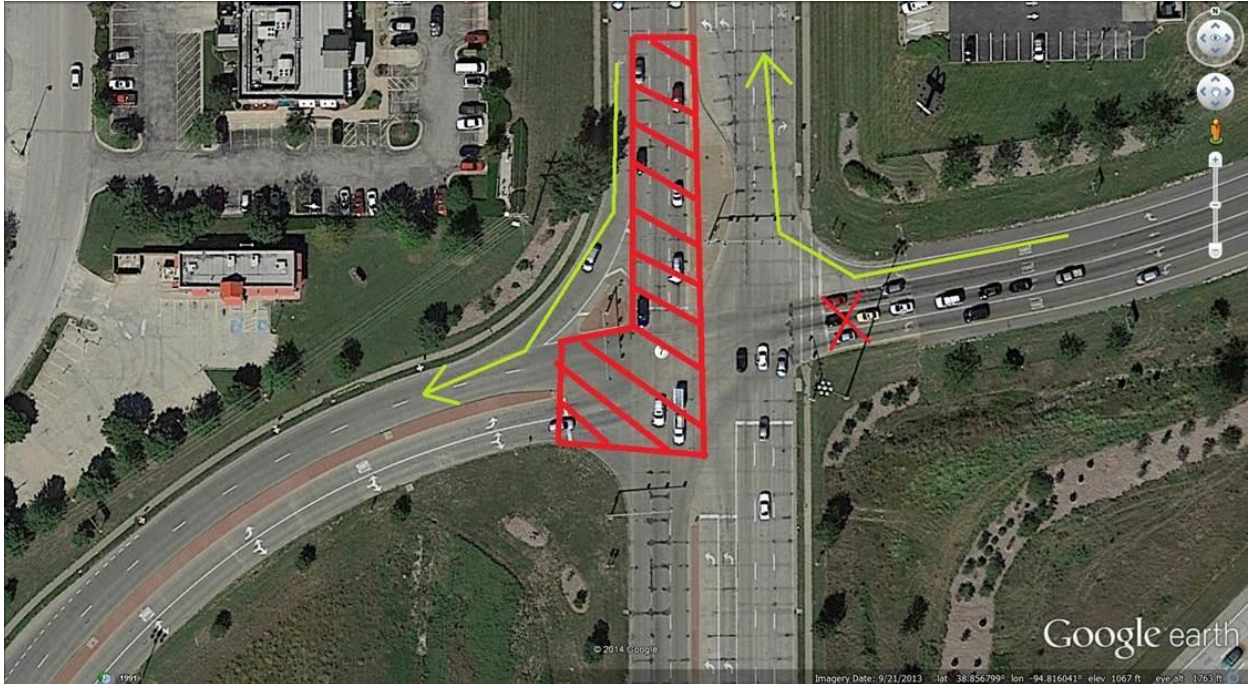
### **K-7/U.S. 169/151st Street & I-35 Interchange**

**EXPECT DELAYS! 24/7 WEEKEND CLOSURES:** Lane/ramp closures at the K-7/I-35/151st Street intersection will occur for pavement reconstruction work on the north side of the intersection for two consecutive weekends beginning at **9:00 p.m. on Friday, June 20 and reopening to all traffic at 5:00 a.m. on Monday, June 23, then again at 9:00 p.m. on Friday, June 27 and reopening to all traffic at 5:00 a.m. on Monday, June 30**, weather permitting.

### **Weekend of June 20-23:**

151st Street/K-7U.S. 169 Interchange on the north side of 151st Street and the southbound I-35 exit ramp through lane will be CLOSED and traffic will be diverted to the north. Southbound K-7 traffic will still be allowed through the intersection.

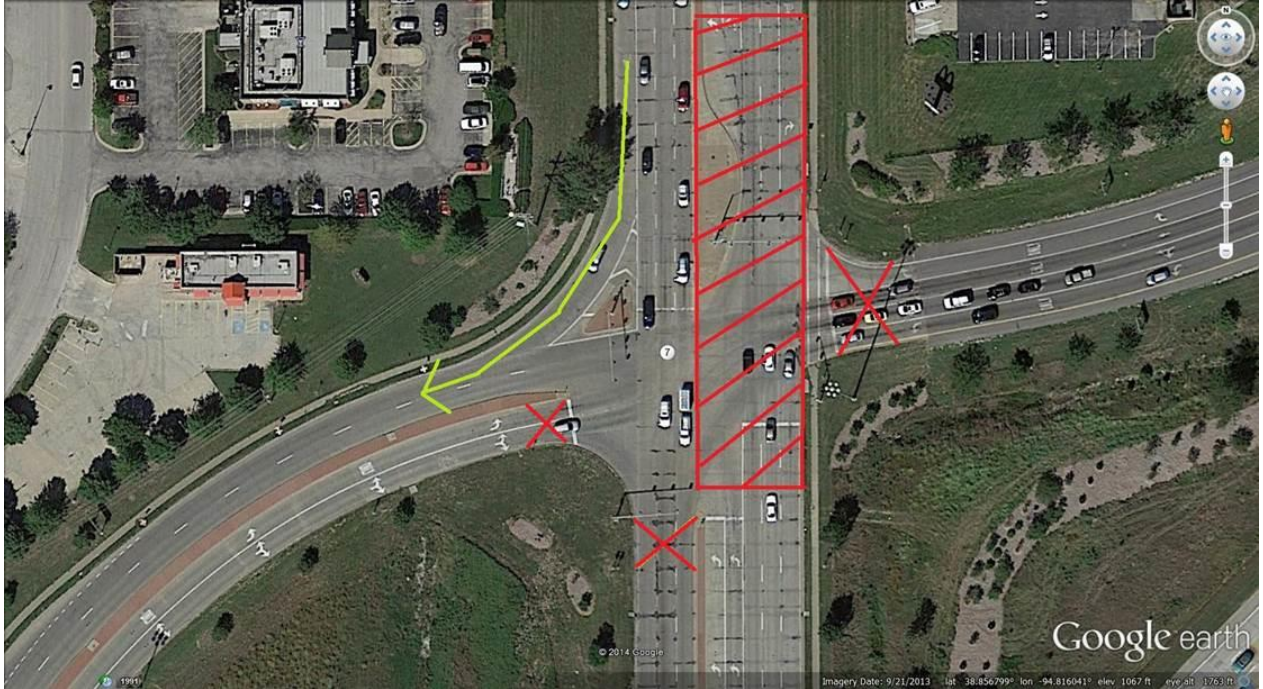
Detour: Southbound I-35 traffic will detour via K-7 to the north, then west on Old U.S. 56, then south on Lone Elm Road, then back east on 151st Street. Northbound K-7 traffic will detour west on 151st Street and then north on Lone Elm Road.



**Weekend of June 27-30:**

151st Street/K-7 U.S. 169 Interchange on the north side of 151st Street and the southbound I-35 exit ramp to K-7/151st Street will be CLOSED, although southbound K-7 traffic will still be allowed through the intersection.

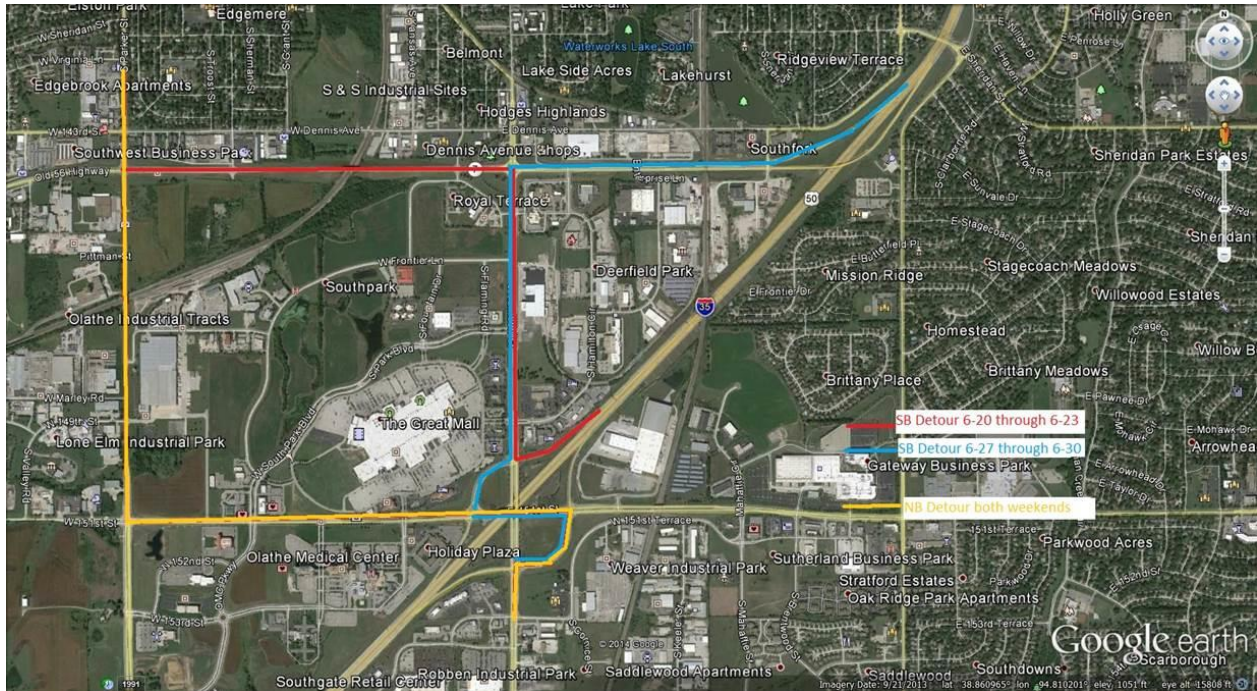
Detour: Southbound I-35 traffic will exit at Old U.S. 56 and go west to K-7 following the existing detour. Northbound K-7 traffic will detour west on 151st Street and then north on Lone Elm Road.



### **K-7/U.S. 169/151st Street & I-35 Interchange Detour Map:**

Here is a list of traffic detours summarized for both weekend closures:

- For Northbound K-7/U.S. 169 traffic: Detour will be 151st Street west to Lone Elm Road then north. This will be the marked detour for both weekends.
- For Southbound K-7/U.S. 169: There is NO ADDITIONAL DETOUR. This traffic will follow the existing detour, up and over the intersection via 151st Street.
- For Northbound I-35 to southbound K-7/U.S. 169: There is no marked detour.
- For Northbound I-35 to northbound K-7: Detour will be 151st Street west to Lone Elm Road then north.
- For Southbound I-35 to northbound K-7: No detour the first weekend. Detour via Old U.S. 56 the second weekend.
- For Southbound I-35 to southbound K-7/U.S. 169: Red line on the detour map below for the first weekend. Blue line on the detour map below for the second weekend.



Traffic will be directed through the project work zone via signage and cones. Drivers should expect minor delays during their weekend commutes.

Updated daily traffic information for this project and for the entire Kansas City Metro Area can be viewed online any time at: [www.ksdot.org/kcmetro/laneclose.asp](http://www.ksdot.org/kcmetro/laneclose.asp).

The Kansas Department of Transportation and the Kansas Turnpike Authority urges all motorists to be alert, obey the warning signs, and “Give ‘Em a Brake!” when approaching and driving through the project work zone.

**The overall project is scheduled to be completed in late September 2014, weather permitting. (KDOT Project #7-46 KA-3408-01)**

###

This information is available in alternative accessible formats. To obtain an alternative format, contact KDOT Transportation Information, Eisenhower Building, 700 SW Harrison, 2nd Floor West, Topeka, Kan., 66603-3754, or (785) 296-3585 (Voice)/Hearing Impaired - 711.

Click below to connect to KDOT’s Social Networks:

