

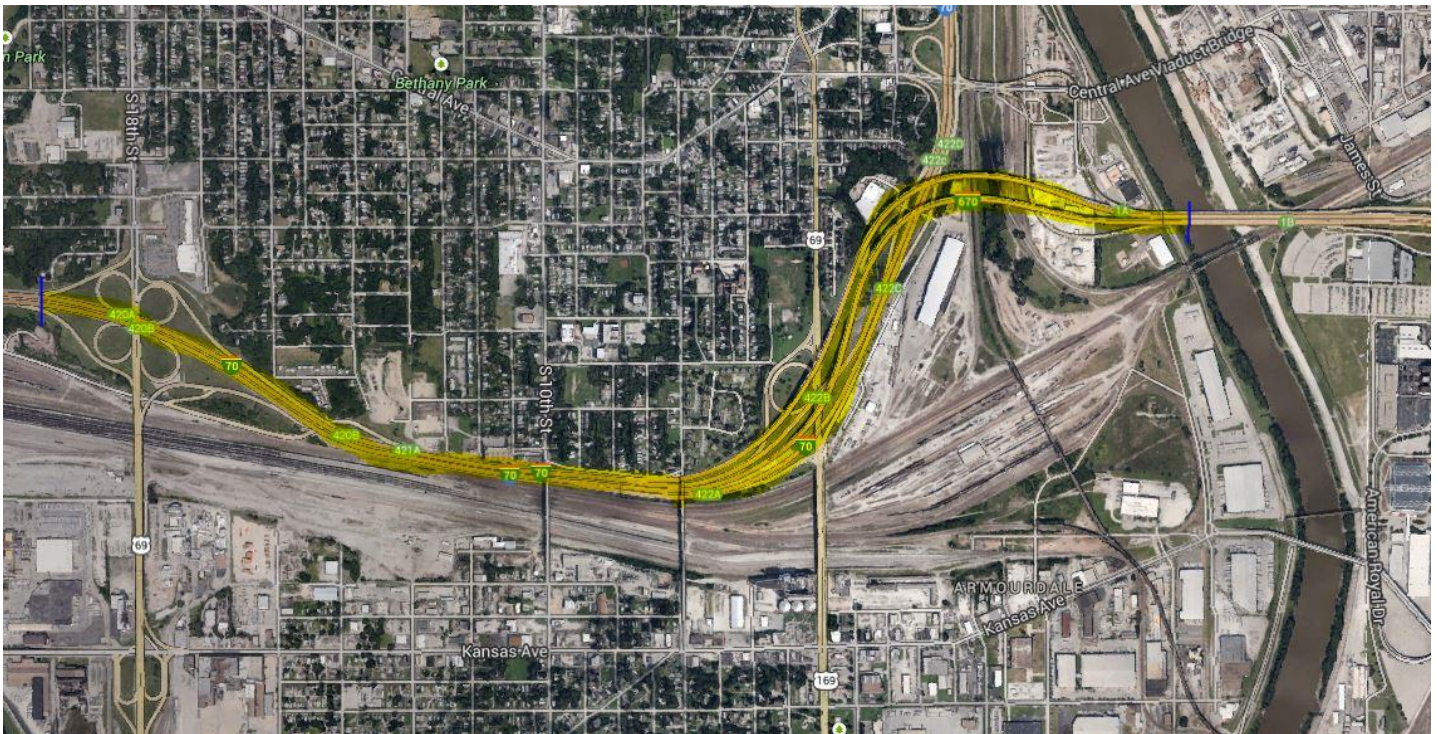
TRAFFIC ALERT

FOR IMMEDIATE RELEASE

May 8, 2014

News Contact: Kimberly Qualls, (785) 640-9340 or kqualls@ksdot.org

I-70 from 18th Street to the KS/MO State Line



EXPECT DELAYS! WEEKDAY OVERNIGHT LANE CLOSURES: Eastbound and westbound I-70 from 18th Street to KS/MO State Line (Wyandotte County) will have overnight lane/ramp closures for resurfacing and pavement marking work during the **week of May 12-17 beginning at 7:00 p.m. and reopening to all traffic at 6:00 a.m. the following morning** as outlined below.

Monday, May 12-Tuesday, May 13

Westbound I-70 and westbound I-670 will be reduced to ONE OPEN LANE from KS/MO State Line to 18th Street

Tuesday, May 13-Wednesday, May 14

Eastbound and westbound I-70 will be reduced to ONE OPEN LANE from 18th Street to KS/MO State Line. Eastbound I-70 will be completely closed and detoured via I-670 for approximately two hours for paving work.

Wednesday, May 14-Thursday, May 15

Eastbound I-70 will be reduced to ONE OPEN LANE from 18th Street to James Street

Thursday, May 15-Friday, May 16

Eastbound I-70 will be reduced to ONE OPEN LANE KS/MO State Line to 18th Street and there will be varying short-term ramp closures.

Friday, May 16-Saturday, May 17

Eastbound and westbound I-70 will be reduced to ONE OPEN LANE from KS/MO State Line to 18th Street. Eastbound I-70 will be completely closed and detoured via I-670 for about two hours for sealing/sawing work.

Traffic will be directed through the project work zone via signage and cones. There may be one or two lanes closed and varying ramp closures on I-70 during the overnight closures that are scheduled to take place between 7:00 p.m. and 6:00 a.m. As well, there be some daytime lane closures as needed.

Updated daily traffic information for this project and for all of the Kansas City Metro Area can be viewed online, 24/7 round the clock at: www.ksdot.org/kcmetro/laneclose.asp

The Kansas Department of Transportation urges all motorists to be alert, obey the warning signs, and “Give ‘Em a Brake!” when approaching and driving through the project work zone.

This resurfacing and pavement marking project is resuming work after the 2013 winter shutdown period. **Overall project work is scheduled to be completed in June 2014.** (KDOT Project #70-105 KA-3282-01)

###

This information is available in alternative accessible formats. To obtain an alternative format, contact KDOT Transportation Information, Eisenhower Building, 700 SW Harrison, 2nd Floor West, Topeka, Kan., 66603-3754, or (785) 296-3585 (Voice)/Hearing Impaired - 711.

Click below to connect to KDOT’s Social Networks:

