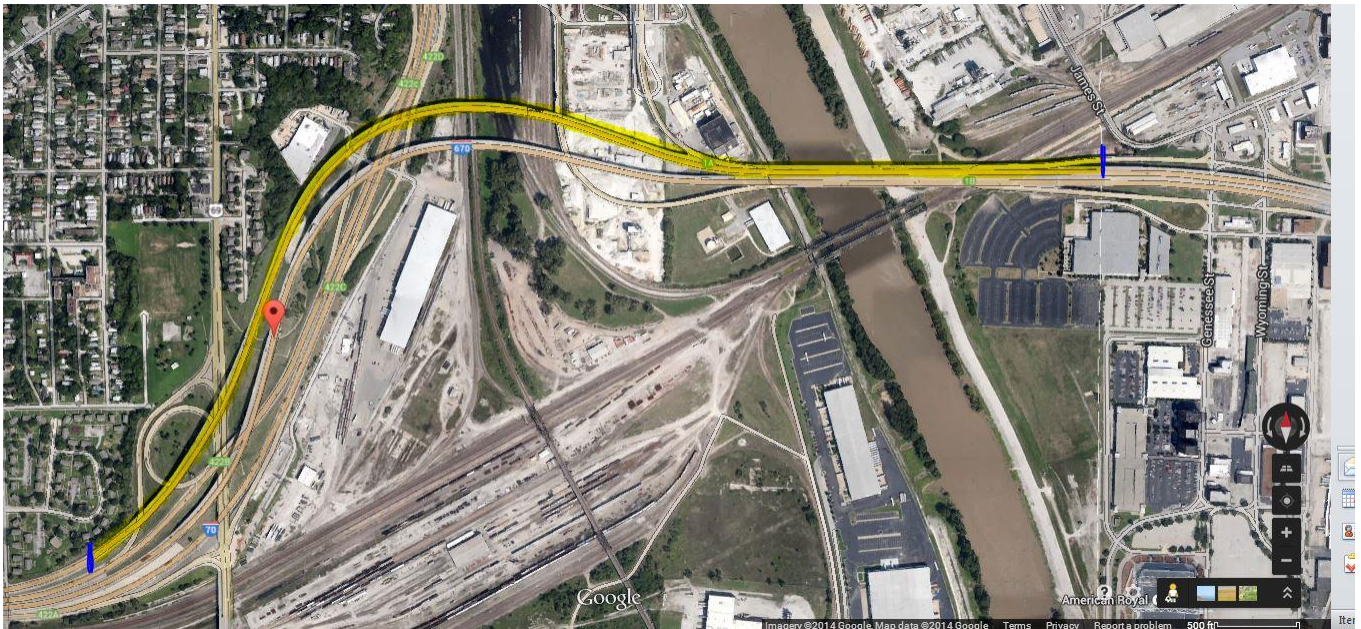


FOR IMMEDIATE RELEASE

July 7, 2014

News Contact: Kimberly Qualls, (785) 640-9340 or kqualls@ksdot.org
Amy Pope, (913) 721-2754 or amyp@ksdot.org



I-670 at 7th Street Bridge Joint Replacement Project to Begin in Wyandotte County

On **Monday, July 14**, a joint replacement project will begin on the westbound I-670 over 7th Street bridge in Kansas City (Wyandotte County). Project work includes the replacement of the bridge joints. Work will take place during daylight hours, Monday through Friday, with some occasional Saturday work.

Beginning at **9:00 a.m. on Monday, July 14**, westbound I-670 over the 7th Street bridge from the Kansas/Missouri state line west to just past the west end of the bridge will be reduced to two open lanes, 24/7 round the clock, for joint replacement work throughout the project duration. (See map above.) Traffic will be detoured through the project work zone via

concrete barrier, signage and cones. NOTE: *The traffic control for this project will be directly adjacent to a Missouri Department of Transportation bridge repair project that has one lane of westbound I-670 over Genessee/Wyoming/Liberty/Beardsley Roads closed in the West Bottoms area.*

Advance message boards will alert traffic to the westbound I-670 lane closure. There will be an 11-foot lane width restriction through the project work zone throughout the duration of the project. Drivers should expect delays during peak commute times and may wish to use alternate routes if possible.

Updated traffic information for this project and the entire Kansas City Metro Area can be viewed online: www.ksdot.org/kcmetro/laneclose.asp.

The Kansas Department of Transportation urges all motorists to be alert, obey the warning signs, and “Give ‘Em a Brake!” when approaching and driving through the project work zone.

PCI (St. Michael, MN) is the primary contractor on this bridge joint repair project with a total contract cost of \$750,000. **The scheduled completion date for the overall project is late September 2014, weather permitting.**

This project is funded by T-WORKS, the transportation program passed by the Kansas Legislature in May 2010. Find out more about this and other T-WORKS projects at: <http://kdotapp.ksdot.org/TWorks/>.

For more information on this project, please contact Kimberly Qualls, Northeast Kansas Public Affairs Manager at (785) 640-9340, or Amy Pope, Construction Engineer, Bonner Springs at (913) 721-2754. (KDOT Project # 670-105 KA-3188-01)

###

This information is available in alternative accessible formats. To obtain an alternative format, contact KDOT Transportation Information, Eisenhower Building, 700 SW Harrison, 2nd Floor West, Topeka, Kan., 66603-3754, or (785) 296-3585 (Voice)/Hearing Impaired - 711.

Click below to connect to KDOT’s Social Networks:

