

South Central District Office
500 N. Hendricks
Hutchinson, KS 67504-0769



phone: 620-663-3361
fax: 620-663-1804
www.ksdot.org

Julie Lorenz, Secretary

Laura Kelly, Governor

IMMEDIATE RELEASE

Jan. 27, 2022

For more information: Tim Potter

620-860-7389; mobile: 620-727-2278; Tim.Potter@ks.gov

Portion of 108th Avenue/Avenue Y closing as part of K-14 realignment

A portion of 108th Avenue/Avenue Y at the Reno/Rice county line will permanently close in about a week as part of ongoing construction of the K-14 realignment.

The closure is part of the new alignment.

An access road is being built for westbound traffic on 108th so that 21st Road can still be accessed from there. This access road will be completed and opened before the closure.

The first map below shows where the closure will be and where the access road will be.

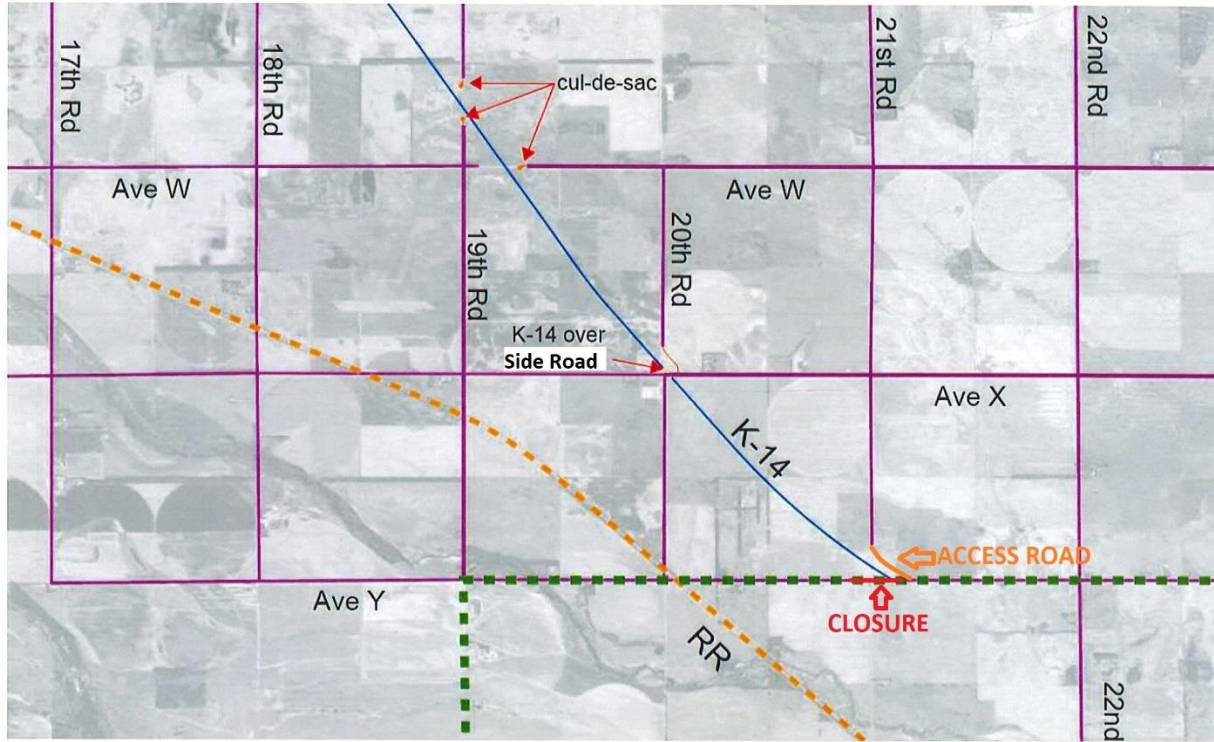
The second map below shows a diagram of the new K-14 alignment in Reno and Rice counties.

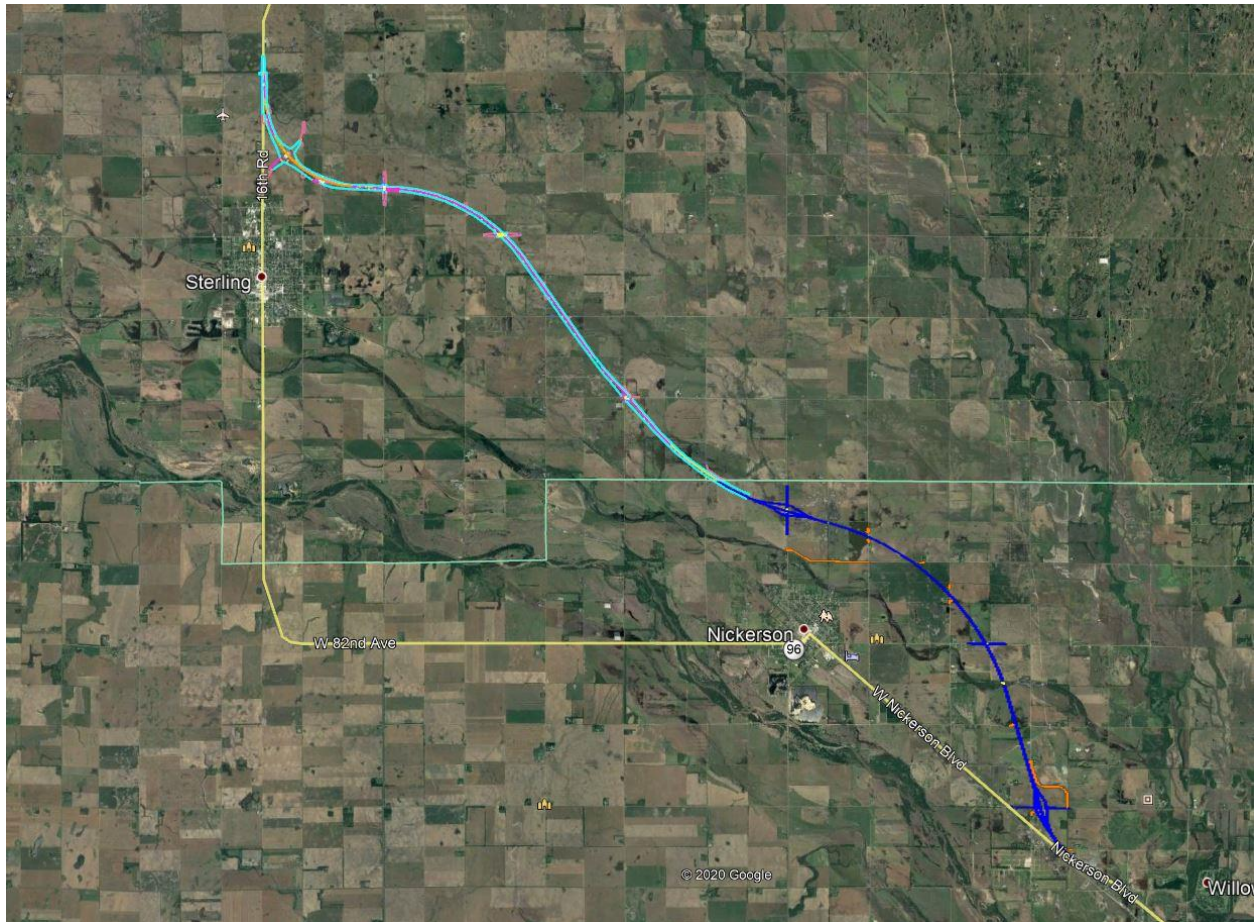
Background: This Kansas Department of Transportation realignment project started in the spring of 2021. This a 15-mile, \$81.7 million realignment of K-14. The work stretches from Hutchinson, to Nickerson, to Sterling. The project is expected to be completed by June 16, 2023. Bob Bergkamp Construction Co. Inc., of Wichita, is the primary contractor.

During the work, traffic will continue to use the existing K-14/96 alignment in Reno and Rice counties.

The Rice County portion of the realignment will be from the Reno/Rice county line to just north of the K-96/Avenue T junction. The length is about 8 miles.

The Reno County portion of the realignment will be from about 4.5 miles southeast of Nickerson northwest to the Reno/Rice county line. The length is a little over 7 miles.





###

This information can be made available in alternative accessible formats upon request.

For information about obtaining an alternative format, contact the KDOT Communications Division,
700 SW Harrison St., 2nd Fl West, Topeka, KS 66603-3754 or phone 785-296-3585 (Voice)/Hearing Impaired – 711.

Click below to connect to KDOT's Social Networks:

