

South Central District Office
500 N. Hendricks
Hutchinson, KS 67504-0769



phone: 620-663-3361
fax: 620-663-1804
www.ksdot.org

Julie Lorenz, Secretary

Laura Kelly, Governor

IMMEDIATE RELEASE

Sept. 14, 2021

For more information: Tim Potter

620-860-7389; mobile: 620-727-2278; Tim.Potter@ks.gov

U.S. 281 bridge project in Barton County to begin soon

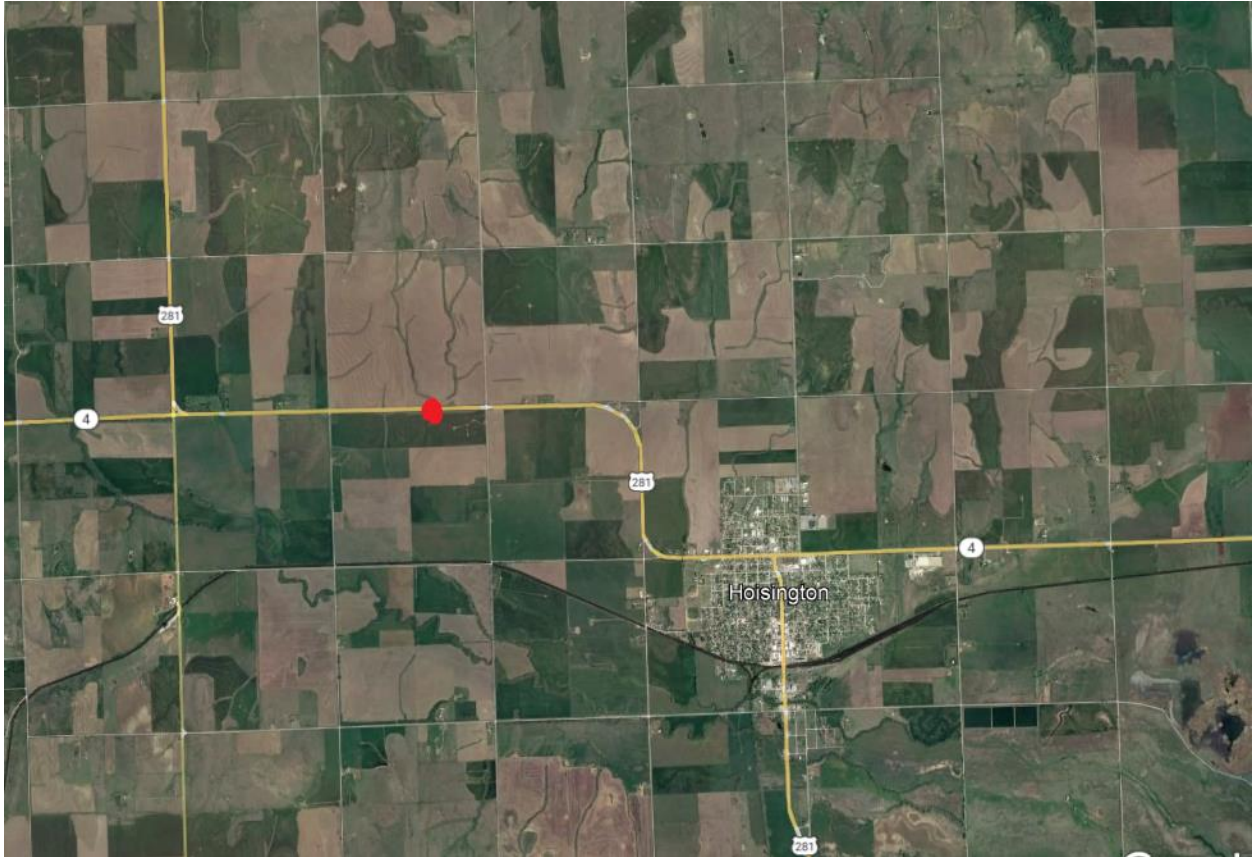
Work to replace a U.S. 281 bridge in Barton County will start soon.

The project, which also involves grading, is over Blood Creek drainage almost 3 miles northwest of the east K-4/U.S. 281 junction. That is northwest of Hoisington.

During the work, expected to begin around Sept. 27, traffic will be controlled by signals and reduced to one lane through the work zone. Motorists should be prepared to slow down for the work zone and should expect delays of up to 15 minutes. The project is expected to be completed around Jan. 28.

Venture Corp., of Great Bend, is the primary contractor for the \$1,005,086 project.

The map below shows the approximate project location, marked with a red dot.



####

This information can be made available in alternative accessible formats upon request.

For information about obtaining an alternative format, contact the KDOT Division of Communications, 700 SW Harrison St., 2nd Fl West, Topeka, KS 66603-3754 or phone 785-296-3585 (Voice)/Hearing Impaired – 711.

Click below to connect to KDOT's Social Networks:

