

IMMEDIATE RELEASE

Aug. 30, 2021

For more information: Tim Potter

620-860-7389; mobile: 620-727-2278; Tim.Potter@ks.gov

Section of Dean Road, 82nd Ave. closing for new K-14 in Reno County

A section of two Reno County roads will be closing to allow ongoing construction of the K-14 realignment.

Starting around Tuesday (Aug. 31) or Wednesday (Sept. 1), Dean Road will be closed between 69th and 56th avenues. The closing will be from roughly 7 a.m. to 8 p.m. Monday through Friday and reopened each night. Traffic on 56th and 69th avenues won't be affected.

Beginning around Sept. 7, 82nd Avenue between Herren and Dean roads will be closed; the closure could last about a year.

The closures are needed for continued construction on the Reno County portion of the K-14 realignment.

The first map below shows the section of Dean Road, marked in vertical red at the bottom, that is closing. The map also shows the section of 82nd Avenue, marked in horizontal red at the top, that is closing.

The second map below shows a diagram of the new K-14 alignment.

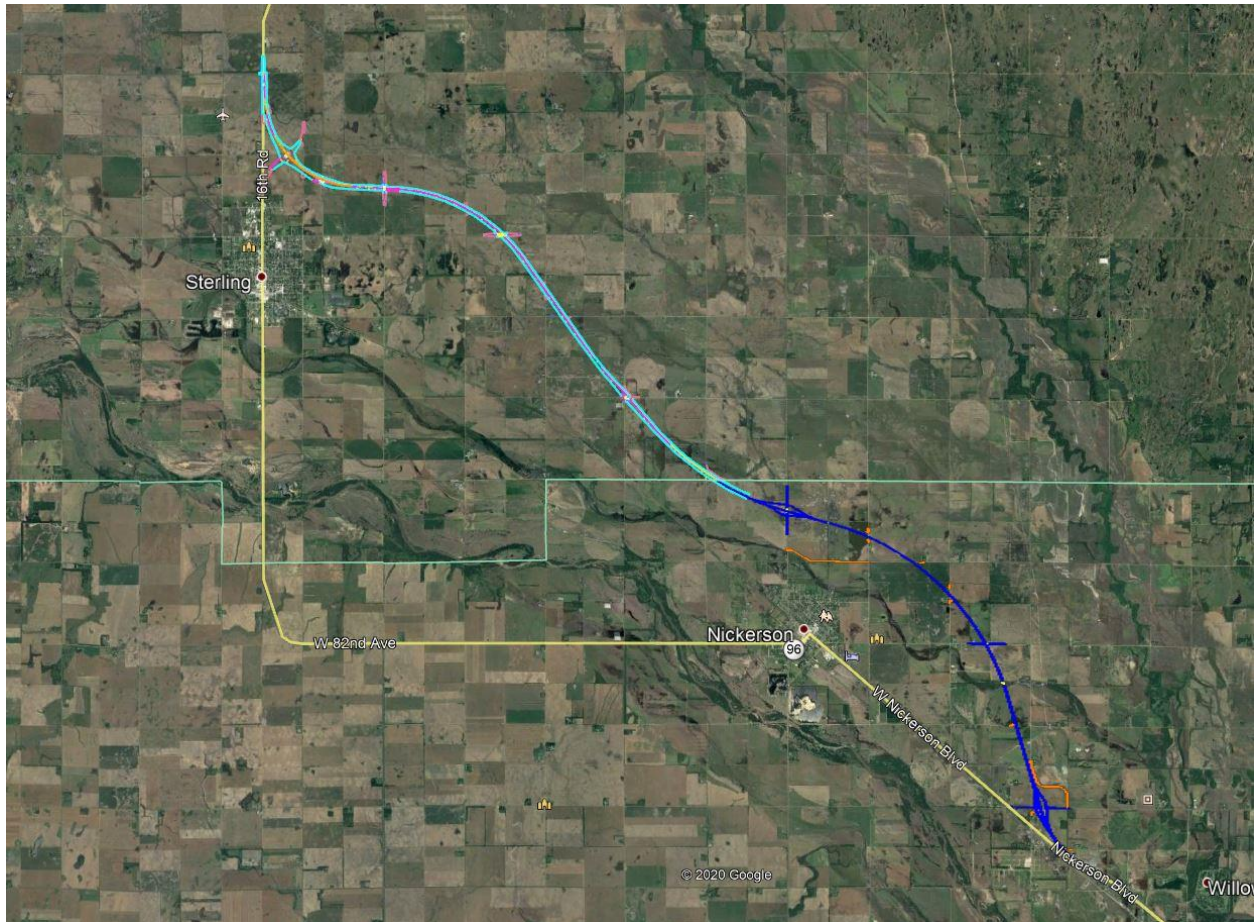
The Kansas Department of Transportation realignment project started this spring. This a 15-mile, \$81.7 million realignment of K-14. The work stretches from Hutchinson, to Nickerson, to Sterling. The project is expected to be completed by June 16, 2023. Bob Bergkamp Construction Co. Inc., of Wichita, is the primary contractor.

During the work, traffic will be able to continue to use the existing K-14/96 alignment in Reno and Rice counties.

The Rice County portion of the realignment will be from the Reno/Rice county line to just north of the K-96/Avenue T junction. The length is about 8 miles.

The Reno County portion of the realignment will be from about 4.5 miles southeast of Nickerson northwest to the Reno/Rice county line. The length is a little over 7 miles.





####

This information can be made available in alternative accessible formats upon request.

For information about obtaining an alternative format, contact the KDOT Division of Communications, 700 SW Harrison St., 2nd Fl West, Topeka, KS 66603-3754 or phone 785-296-3585 (Voice)/Hearing Impaired – 711.

Click below to connect to KDOT's Social Networks:

