

South Central District Office
500 N. Hendricks
Hutchinson, KS 67504-0769



phone: 620-663-3361
fax: 620-663-1804
www.ksdot.org

Julie Lorenz, Secretary

Laura Kelly, Governor

IMMEDIATE RELEASE

July 31, 2020

For more information: Tim Potter

620-860-7389; mobile: 620-727-2278; Tim.Potter@ks.gov

Reno County section of K-14 to close for pipeline maintenance

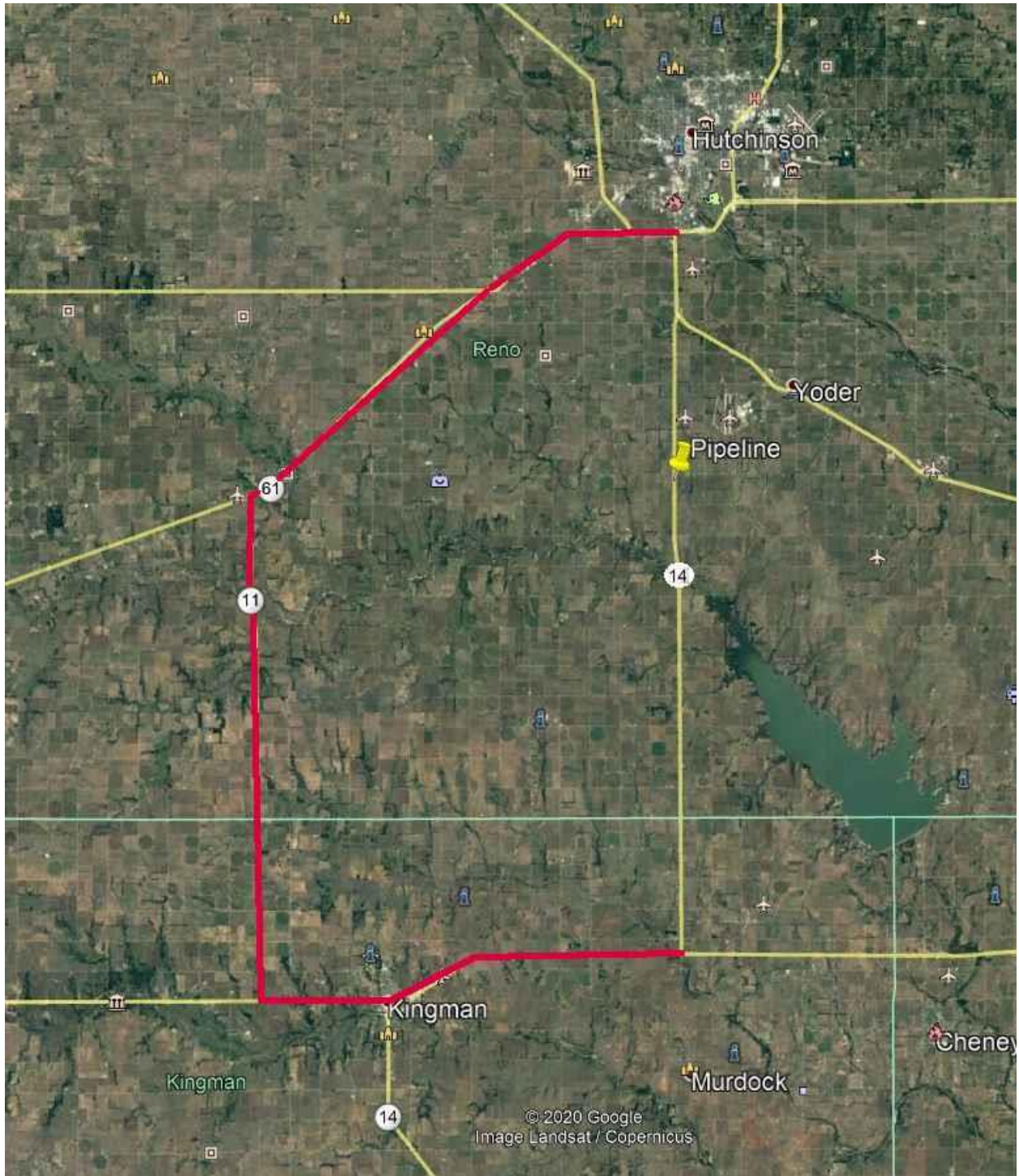
A section of K-14 in Reno County is scheduled to be closed from Aug. 10 to Aug. 17 for maintenance on the Panhandle Eastern Pipeline.

The length of the closure could depend on the weather.

Traffic will be directed by signed detour on other state highways. The detour will consist of U.S. 54, K-11 and K-61.

The section of K-14 directly affected by the closure is between Irish Creek Road and Arlington Road. Other portions of K-14 not directly affected by the work will remain open to local traffic.

The map below shows the detour route, marked in red, and the pipeline work-site location involved in the K-14 closure.



####

This information can be made available in alternative accessible formats upon request.

For information about obtaining an alternative format, contact the KDOT Division of Communications, 700 SW Harrison St., 2nd Fl West, Topeka, KS 66603-3754 or phone 785-296-3585 (Voice)/Hearing Impaired – 711.

Click below to connect to KDOT's Social Networks:

