

South Central District Office
500 N. Hendricks
Hutchinson, KS 67504-0769



phone: 620-663-3361
fax: 620-663-1804
www.ksdot.org

Julie Lorenz, Secretary

Laura Kelly, Governor

IMMEDIATE RELEASE

Aug. 26, 2020

For more information: Tim Potter

620-860-7389; mobile: 620-727-2278; Tim.Potter@ks.gov

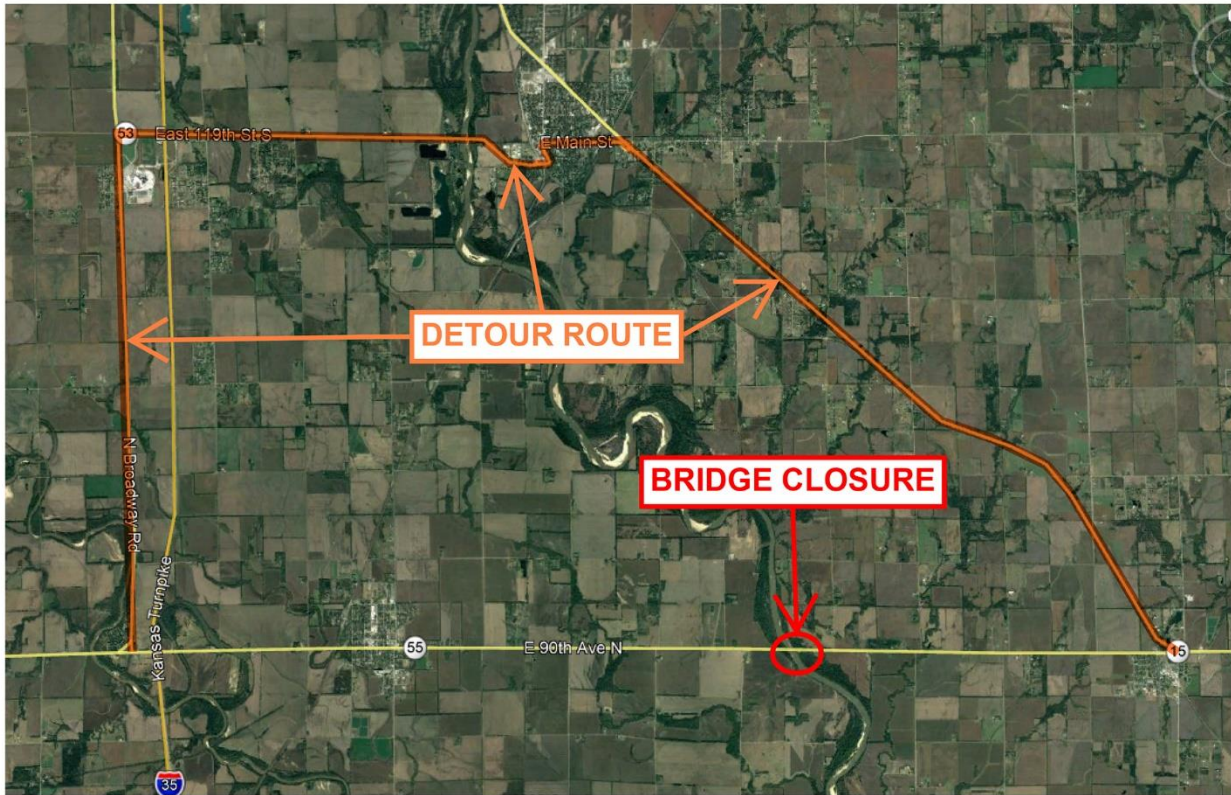
K-55 bridge between Belle Plaine, Udall to be closed for survey

The K-55 bridge over the Arkansas River between Belle Plaine and Udall will be closed for a geological survey beginning Sept. 8.

The bridge is expected to reopen Sept. 14, possibly sooner.

There will be a signed detour on other state or U.S. highways. The detour will include U.S. 81, K-53 and K-15.

The map below shows the bridge closure and detour route.



####

This information can be made available in alternative accessible formats upon request.

For information about obtaining an alternative format, contact the KDOT Division of Communications, 700 SW Harrison St., 2nd Fl West, Topeka, KS 66603-3754 or phone 785-296-3585 (Voice)/Hearing Impaired – 711.

Click below to connect to KDOT's Social Networks:

