

South Central District Office
500 N. Hendricks
Hutchinson, KS 67504-0769



phone: 620-663-3361
fax: 620-663-1804
www.ksdot.org

Julie Lorenz, Secretary

Laura Kelly, Governor

IMMEDIATE RELEASE

Sept. 14, 2020

For more information: Tim Potter

620-860-7389; mobile: 620-727-2278; Tim.Potter@ks.gov

Crack repair to begin on U.S. 56, U.S. 183 in Pawnee County

Asphalt crack repair will start soon on a section of U.S. 56 and a portion of U.S. 183 in Pawnee County.

On U.S. 56, the crack repair will be done from the east city limits of Larned to the Barton County line. The length is about 7 miles.

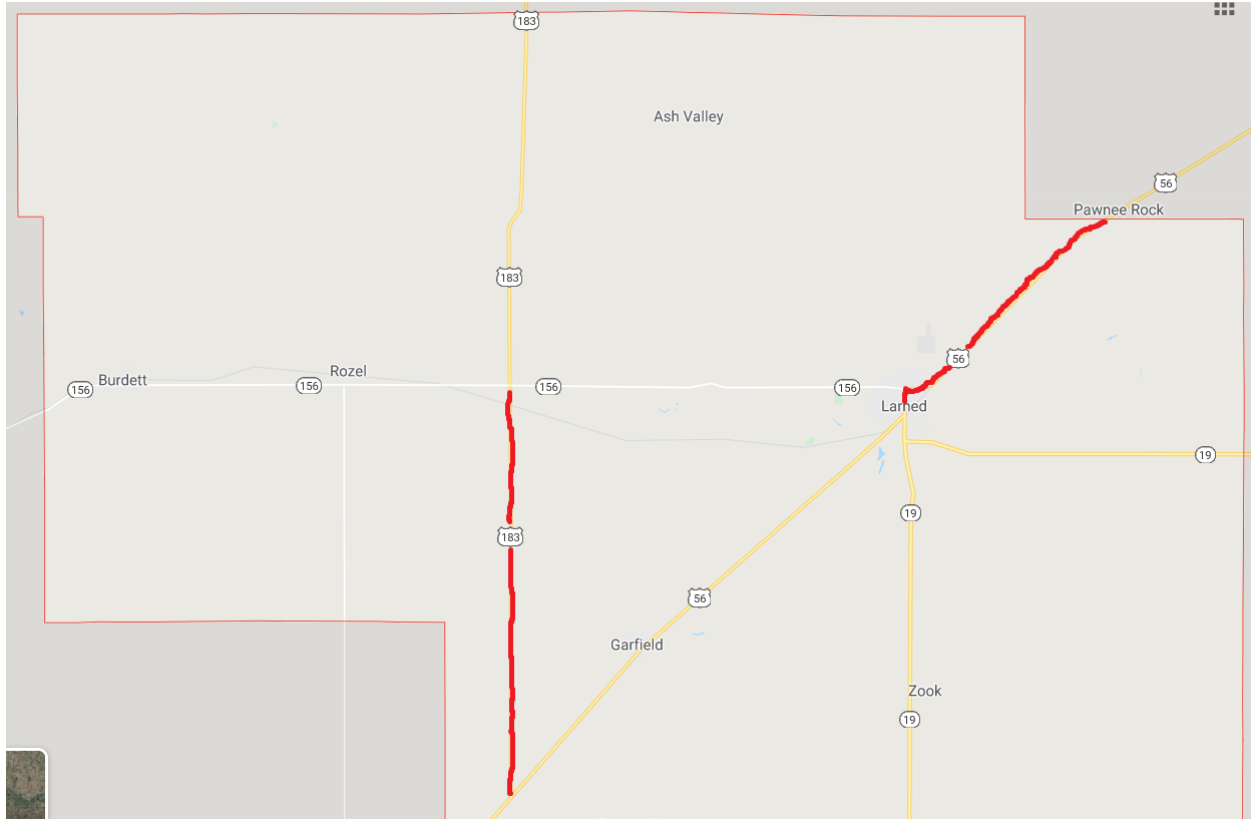
On U.S. 183, the crack repair will be done from the U.S. 56 junction to the U.S. 156 junction. The length is about 12 miles.

The project, overseen by the Kansas Department of Transportation, is expected to begin around Friday, Sept. 18, and be completed around Oct. 16, depending on the weather.

During the work, traffic will be controlled by flaggers and a pilot car. Motorists should be prepared to stop and expect delays of up to 15 minutes.

Mission Construction Co. Inc., of St. Paul, Kan., is the main contractor for the \$229,205 project.

The map below shows the approximate project sections, marked in red.



####

This information can be made available in alternative accessible formats upon request.

For information about obtaining an alternative format, contact the KDOT Division of Communications, 700 SW Harrison St., 2nd Fl West, Topeka, KS 66603-3754 or phone 785-296-3585 (Voice)/Hearing Impaired – 711.

Click below to connect to KDOT's Social Networks:

