

South Central District Office
500 N. Hendricks
Hutchinson, KS 67504-0769



phone: 620-663-3361
fax: 620-663-1804
www.ksdot.org

Julie Lorenz, Secretary

Laura Kelly, Governor

IMMEDIATE RELEASE

Oct. 22, 2020

For more information: Tim Potter

620-860-7389; mobile: 620-727-2278; Tim.Potter@ks.gov

Some 125th Street ramps at I-135 will close for project

One of the entrance ramps and one of the exit ramps at 125th Street and I-135 will close beginning Thursday afternoon, Oct. 22, for patching on I-135.

The project – bridge-approach patching from the Harvey/Sedgwick county line north to Newton – will close the northbound ramp onto the interstate and the southbound exit ramp from the interstate. The other ramps at 125th Street will remain open.

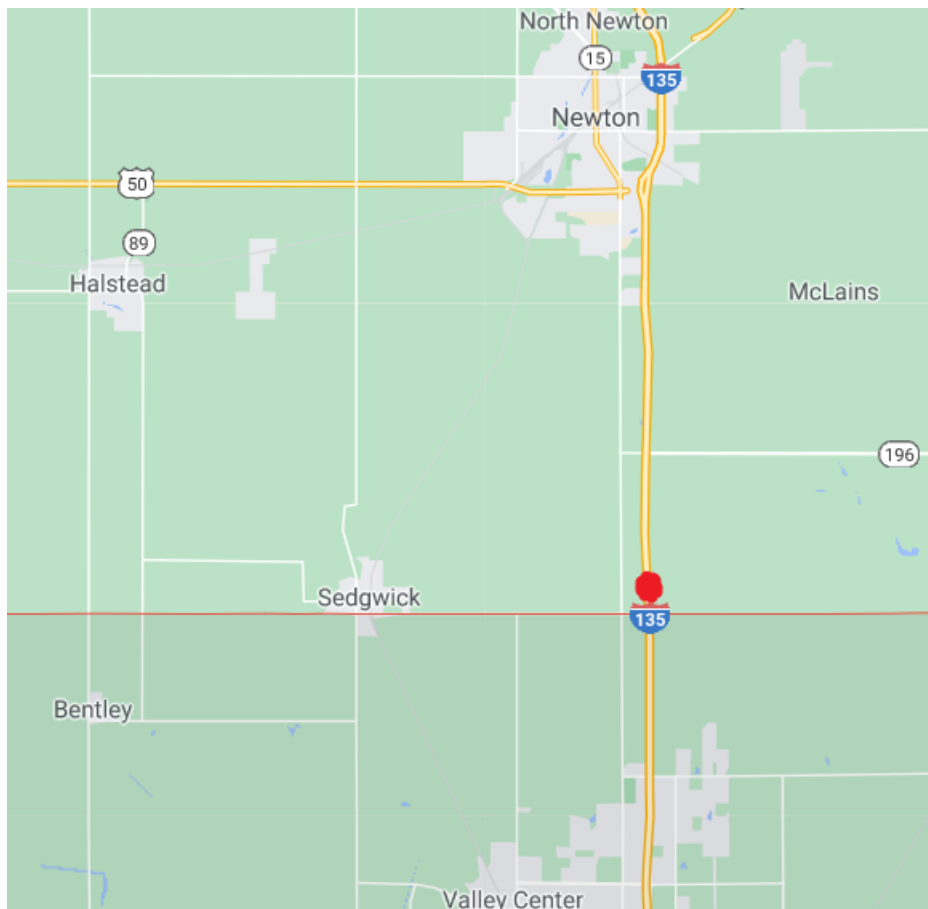
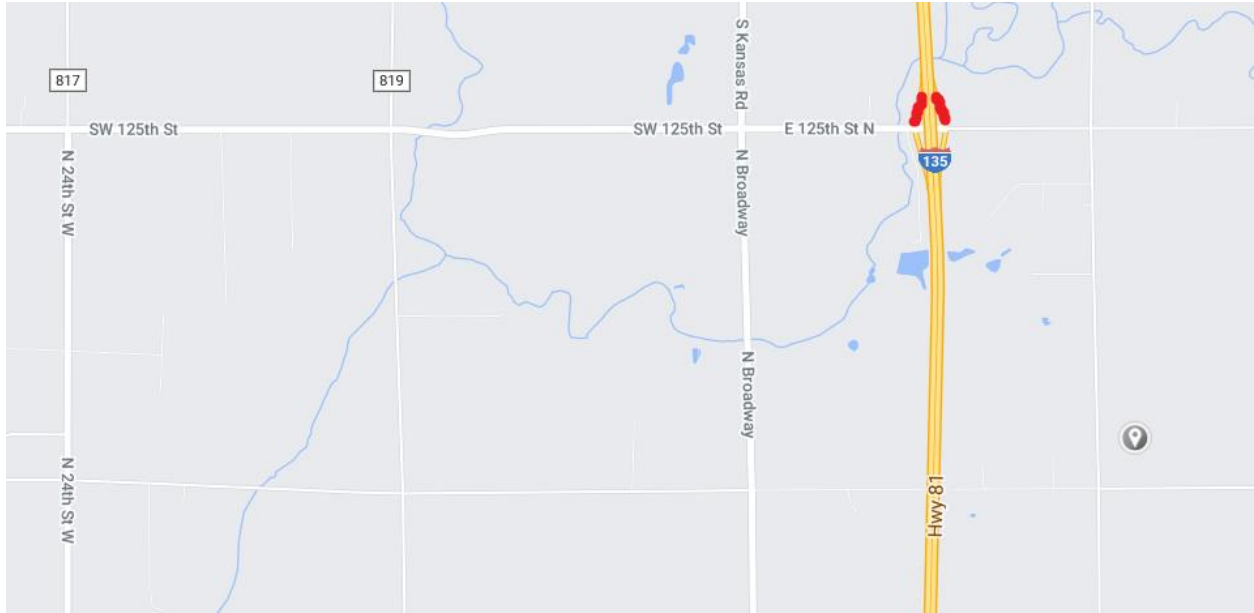
The closures are expected to continue until Dec. 11.

There is no official state detour for the closures.

The Kansas Department of Transportation is overseeing the work.

The maps below show the ramp closure locations, marked in red.

Check KDOT's updated traveler information website, www.Kandrive.org, for more road condition and construction details. KDOT urges all motorists to be alert and obey the warning signs when approaching and driving through a work zone.



####

This information can be made available in alternative accessible formats upon request.

For information about obtaining an alternative format, contact the KDOT Division of Communications, 700 SW Harrison St., 2nd Fl West, Topeka, KS 66603-3754 or phone 785-296-3585 (Voice)/Hearing Impaired – 711.

Click below to connect to KDOT's Social Networks:

