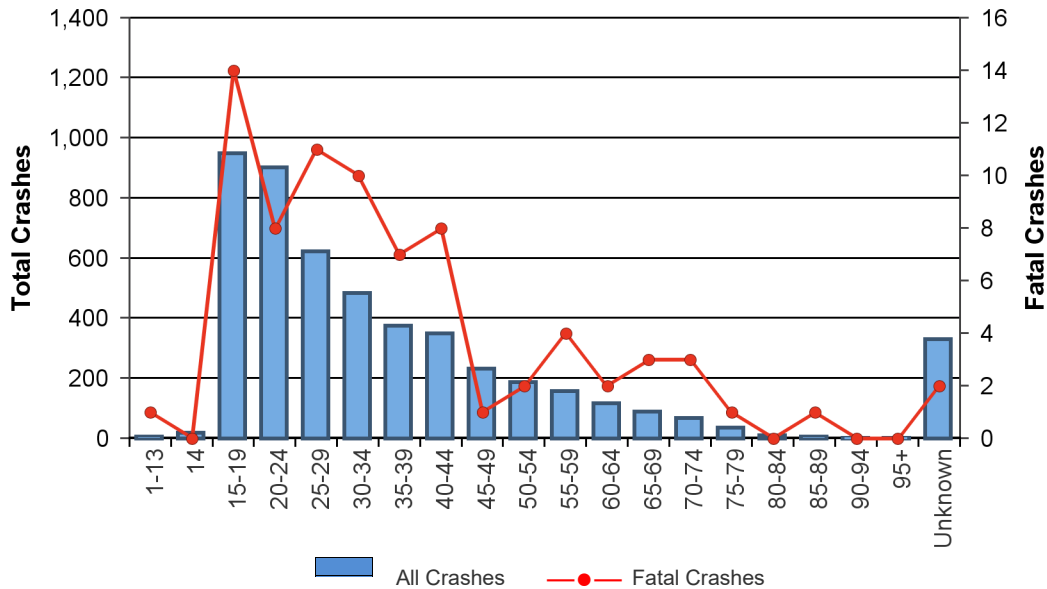


## Speed Related Crashes by Age Group

Year	Crashes per Age Group		
	Total	Fatal	Injury
1-13	7	1	5
14	19	0	13
15-19	949	14	290
20-24	902	8	268
25-29	622	11	178
30-34	485	10	141
35-39	376	7	111
40-44	350	8	117
45-49	232	1	80
50-54	188	2	52
55-59	158	4	53
60-64	118	2	38
65-69	90	3	27
70-74	68	3	23
75-79	35	1	15
80-84	10	0	2
85-89	6	1	0
90-94	2	0	2
95+	1	0	1
Unknown	331	2	61
<b>Total</b>	<b>4,890*</b>	<b>77*</b>	<b>1,460*</b>

### Speeding Drivers and Their Crashes by Age Group



\* The crash totals do not reflect the sum of the columns above as multiple counting occurs when drivers of different age groups are involved in the same crash.

## SPEED-RELATED CRASHES

Year	Crashes				People	
	Total	Fatal	Injury	PDO	Deaths	Injuries
2013	5,774	73	1,695	4,006	76	2,466
2014	5,970	80	1,679	4,211	92	2,436
2015	5,547	89	1,547	3,911	100	2,288
2016	4,873	66	1,491	3,316	72	2,139
2017	4,344	65	1,397	2,882	73	2,026
2018	5,811	66	1,612	4,133	73	2,244
2019	5,771	85	1,531	4,155	93	2,205
2020	4,610	80	1,450	3,080	88	2,075
2021	4,494	70	1,423	3,001	76	1,977
2022	4,890	77	1,460	3,353	93	2,054
<b>Total</b>	<b>52,084</b>	<b>751</b>	<b>15,285</b>	<b>36,048</b>	<b>836</b>	<b>21,910</b>

