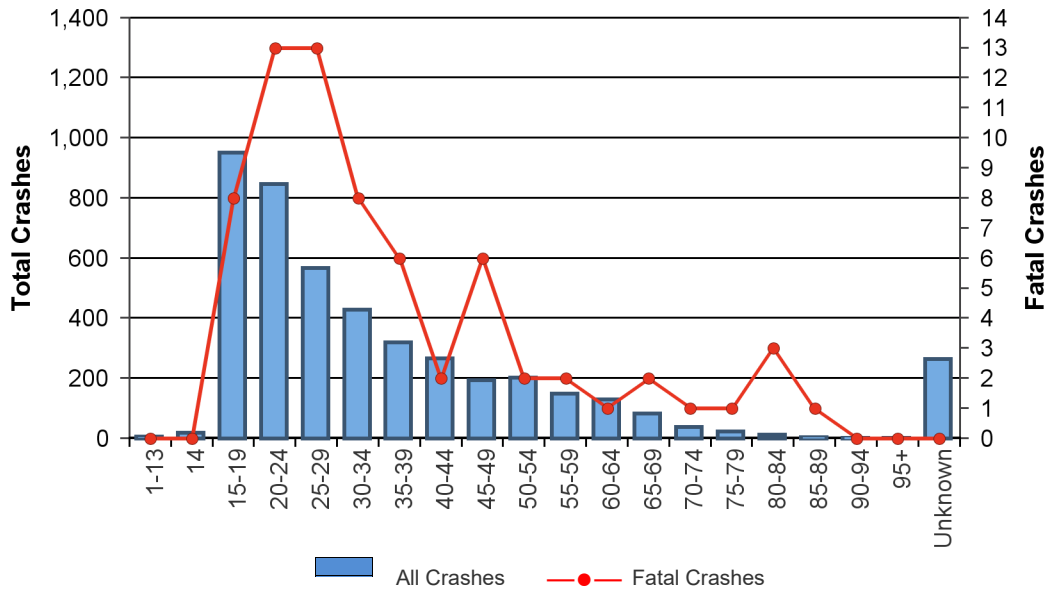


2021 Kansas Traffic Crash Facts

Speed Related Crashes by Age Group

| Crashes per Age Group | | | |
|-----------------------|--------|-------|--------|
| Year | Total | Fatal | Injury |
| 1-13 | 6 | 0 | 4 |
| 14 | 20 | 0 | 10 |
| 15-19 | 952 | 8 | 317 |
| 20-24 | 847 | 13 | 267 |
| 25-29 | 568 | 13 | 181 |
| 30-34 | 429 | 8 | 140 |
| 35-39 | 319 | 6 | 100 |
| 40-44 | 267 | 2 | 90 |
| 45-49 | 194 | 6 | 61 |
| 50-54 | 203 | 2 | 63 |
| 55-59 | 149 | 2 | 51 |
| 60-64 | 129 | 1 | 40 |
| 65-69 | 83 | 2 | 29 |
| 70-74 | 39 | 1 | 13 |
| 75-79 | 23 | 1 | 8 |
| 80-84 | 12 | 3 | 4 |
| 85-89 | 5 | 1 | 2 |
| 90-94 | 2 | 0 | 0 |
| 95+ | 2 | 0 | 2 |
| Unknown | 265 | 0 | 46 |
| Total | 4,479* | 69* | 1,417* |

Speeding Drivers and Their Crashes by Age Group



* The crash totals do not reflect the sum of the columns above as multiple counting occurs when drivers of different age groups are involved in the same crash.

2021 Kansas Traffic Crash Facts

SPEED-RELATED CRASHES

| Year | Crashes | | | | People | |
|--------------|---------------|------------|---------------|---------------|------------|---------------|
| | Total | Fatal | Injury | PDO | Deaths | Injuries |
| 2012 | 4,638 | 87 | 1,594 | 2,957 | 95 | 2,397 |
| 2013 | 5,774 | 73 | 1,695 | 4,006 | 76 | 2,466 |
| 2014 | 5,970 | 80 | 1,679 | 4,211 | 92 | 2,436 |
| 2015 | 5,547 | 89 | 1,547 | 3,911 | 100 | 2,288 |
| 2016 | 4,872 | 66 | 1,491 | 3,315 | 72 | 2,139 |
| 2017 | 4,343 | 65 | 1,397 | 2,881 | 73 | 2,026 |
| 2018 | 5,811 | 66 | 1,612 | 4,133 | 73 | 2,244 |
| 2019 | 5,768 | 85 | 1,531 | 4,152 | 93 | 2,205 |
| 2020 | 4,604 | 80 | 1,449 | 3,075 | 88 | 2,074 |
| 2021 | 4,479 | 69 | 1,417 | 2,993 | 75 | 1,969 |
| Total | 51,806 | 760 | 15,412 | 35,634 | 837 | 22,244 |

